

# Longs Drugs

"Make Longs a Part of Your Day"

**June 29 - July 5, 2025**  
at most Big Island, Kauai & Maui Longs Drugs

We accept all manufacturers' coupons, subject to manufacturer's restrictions. Advertised items are available at participating locations. Seasonal Merchandise is limited to stock on hand.

We reserve the right to limit sales to dealers, restaurants or institutions.  
General Excise Tax additional. **LONGS 24-HOUR STORES:** Sale effective Sunday (6/29) 12am thru Saturday (7/5) 12 midnight. Liquor items will be available for purchase from 6:00 am - 11:00 pm.



**2/\$6** WITH CARD

**Libby's Corned Beef Hash**  
15 oz.

**2/\$10** WITH CARD

**McNeill & Libby Corned Beef**  
Regular or 25% Less Sodium  
12 oz.



**Must Buy**  
**2/\$20** WITH CARD  
or **11.99** WITH CARD  
Each



**Hormel Spam**  
Classic or 25% Low Sodium  
4 pack



**8.29** WITH CARD

**Angel Soft Mega Roll Bathroom Tissue**  
8 count or Ultra - 6 count



**27.99** WITH CARD

**Michelob Ultra**  
Twenty-four 12 oz. cans

**16.99** WITH CARD

**Corona Beer or Heineken Lager Beer**  
Twelve 12 oz. bottles or cans  
Selected Varieties



**99¢** WITH CARD

**Libby's Vienna Sausage**  
4.6 oz.  
Selected Varieties

**11.99** WITH CARD

18 pack



**2/7.50** WITH CARD

**Lay's Chips** - 4.75 - 8 oz. or **Kettle Chips** - 8 oz.  
Selected Varieties

**4.99** WITH CARD

**Dip**  
15 oz.  
Selected Varieties



**Buy 1, Get 1**

**FREE\*\***

WITH CARD

**Nature Made Vitamins & Supplements**  
Selected Varieties



**28.99** WITH CARD

**\*Budweiser Beer**  
Light or Regular  
**\*Coors Beer**  
Light or Banquet  
**\*Miller Beer**  
Lite or 64  
Thirty 12 oz. cans

**FIREWORKS & NOVELTIES**  
will be available for purchase thru July 4<sup>th</sup> @ 8pm  
ALL SALES FINAL. NO EXCHANGES OR REFUNDS.



Find *more* deals  
on [longs.com](https://www.longs.com)



@LongsDrugsHI



## HOT PRICE!

While Supplies Last!  
Sorry, No Rainchecks.

# 2/\$4

WITH CARD

**Pringles**  
5.2 - 5.5 oz.  
Selected Varieties



# 3/\$7

WITH CARD

**Enjoy Arare** - 3.8 - 8 oz.  
Selected Varieties

# 2/6<sup>50</sup>

WITH CARD

**Iso Peanuts**  
6 - 7 oz.  
Selected Varieties

# 4<sup>99</sup>

WITH CARD

**Seeds** - 2.25 - 7 oz.  
Selected Varieties



# 2/\$6

WITH CARD

**Planters Peanuts**  
16 oz.  
Selected Varieties

## HOT PRICE!

While Supplies Last!  
Sorry, No Rainchecks.

# 3<sup>99</sup>

WITH CARD

**Oberto Jerky**  
2.2 - 2.7 oz.  
Selected Varieties or  
**Cocktail Pep Smoked Sausage Bites**  
5 oz.



# 99¢

WITH CARD

**Coral Chunk Light Tuna**  
in Water or  
in Vegetable Oil  
5 oz.

# 9<sup>79</sup>

WITH CARD

10 pack



# 10<sup>99</sup>

WITH CARD

**Diamond G Calrose Rice**  
15 lb.



# 6/\$4

WITH CARD

or **99¢** WITH CARD  
Each

**Sapporo Ichiban Noodles**  
3.5 oz.  
Selected Varieties



# 7<sup>99</sup>

WITH CARD

**Shinsyu-Ichi Miso Soup**  
Awase or  
30% Less Sodium  
20 count





**2/\$4**

WITH CARD

**Del Monte  
Green Beans,  
Corn or  
Sweet Peas**  
11 - 15.25 oz.  
Selected Varieties



**4/\$5**

WITH CARD

**Van Camp's  
Pork & Beans or  
Dark Red  
Kidney Beans**  
15 oz.



**2/\$10**

WITH CARD

**Wesson Oil**  
Vegetable or Canola  
40 oz.



**4.99**

WITH CARD

**Tropics  
Dressing**  
12 oz.  
Selected Varieties



**4/\$5**

WITH  
CARD

**Swanson  
Broth**  
14.5 oz., Selected Varieties



**2.69**

WITH  
CARD

**Campbell's  
Soup**  
22.4 - 23.2 oz. family size  
Selected Varieties



**4/\$5**

WITH  
CARD

**Golden Grain Pasta**  
Spaghetti, Elbows,  
Vermicelli or Thin Spaghetti  
16 oz.



**2/\$7**

WITH  
CARD

**Prego  
Italian Sauce**  
24 oz., Selected Varieties



**5/\$5**

WITH  
CARD

**Hunt's  
Tomato Sauce**  
8 oz.  
Selected Varieties



**4/\$5**

WITH  
CARD

**Tomato Paste**  
6 oz.



**2/\$4**

WITH CARD

**Del Monte  
Ketchup**  
24 oz.



## HOT PRICE!

While Supplies Last! Sorry, No Rainchecks.

**2/\$5** WITH CARD

**S&B Golden Curry Sauce Mix**  
3.2 oz., Selected Varieties

**3/\$5** WITH CARD

**Shirakiku Cooked Sticky White Rice**  
7.05 oz.



**3/\$5** WITH CARD

**Shirakiku Korean Seasoned Seaweed**  
3 count



**3.99** WITH CARD

**Mishima Furikake**  
1.5 - 1.9 oz.  
Selected Varieties



**7.99**

WITH CARD

**Aloha Soy Sauce**  
64 oz.  
Selected Varieties



**5.49**

WITH CARD

**Hawaii's Best Hawaiian Powder Mix**  
5.6 - 16.5 oz.  
Selected Varieties



**7.99**

WITH CARD

**Lion Coffee Blend**  
7 - 10 oz. or  
**Single Serve Cups**  
12 count  
Selected Varieties  
Select items contain  
90% foreign grown coffee



**21.99**

WITH CARD

**Mulvadi 100% Kona Coffee**  
Ground or Whole Bean  
7 oz.



**6.99**

WITH CARD

**Folgers Instant Coffee Crystals**  
Classic Roast or  
Classic Decaf  
8 oz.



**3.49** WITH CARD

**Nestle Coffeemate Creamer**  
24 count  
Selected Varieties

**6.59** WITH CARD

**French Vanilla**  
30 oz. or  
Original - 35.3 oz.





**2/5<sup>50</sup>** WITH CARD

**Skippy Peanut Butter**  
16.3 oz.  
Selected Varieties

**2/\$8** WITH CARD

**Hawaiian Sun Jam or Jelly**  
10 oz.  
Selected Varieties



**5<sup>99</sup>** WITH CARD

**Hearth & Harvest Bread**  
Wheat or White  
22 oz.

**9<sup>99</sup>** WITH CARD

**Ani's Round Sweet Bread**  
16 oz.



**6<sup>99</sup>** WITH CARD

**Oscar Mayer Bacon**  
16 oz.  
Selected Varieties



**2/\$3** WITH CARD

**\*Hawaiian Brand Co. Portuguese Sausage**  
Mild or Hot  
**\*Gouvea's Portuguese Sausage**  
5 oz.



**HOT PRICE!**

*While Supplies Last!  
Sorry, No Rainchecks.*

**2/\$9**

WITH CARD

**Quaker Instant Oatmeal**  
8 - 10 count  
Selected Varieties



**2/\$6**

WITH CARD

**General Mills Cheerios Cereal**  
9 - 14.2 oz.  
Selected Varieties



**7<sup>49</sup>**

WITH CARD

**SunHeath Milk**  
One gallon  
Selected Varieties



**69¢**

WITH CARD

**Yoplait Yogurt**  
Original or Light  
6 oz.  
Selected Varieties



**HOT PRICE!**

While Supplies Last! Sorry, No Rainchecks.

**2/8<sup>50</sup>** WITH CARD



**Diamond Bakery  
Hawaiian Shortbread  
Macadamia Cookies**  
4 oz. or  
**Soda Crackers**  
13 oz.  
Selected Varieties



**2/\$8** WITH CARD

**Nabisco  
Oreo**  
10.68 - 18.71 oz.  
family size or  
**Ritz Crackers**  
11.8 - 13.7 oz.  
Selected Varieties



**8<sup>99</sup>** WITH CARD  
**Big Island Delights  
Macadamia  
Snowball Delights**  
14 oz.



**10<sup>49</sup>** WITH CARD  
**Chocolate Dipped  
Macadamia Shortbread**  
10 oz., Selected Varieties



**2/5<sup>50</sup>** WITH CARD

**Pop-Tarts**  
8 count  
Selected Varieties

**2/\$6** WITH CARD

**Nature Valley**  
\*Bars  
6 count, Selected Varieties  
\*Biscuits  
Peanut Butter or  
Cinnamon Almond Butter  
5 count



**6<sup>99</sup>** WITH CARD  
**Fatboy  
Ice Cream**  
4 - 9 count  
Selected Varieties



**7<sup>99</sup>** WITH CARD  
**Blue Diamond  
Almonds**  
16 oz.  
Selected Varieties



**2/5<sup>50</sup>** WITH CARD  
**Pik-Nik  
Shoestring  
Potatoes**  
9 oz.  
Selected Varieties



**2/\$4** WITH CARD  
**Bugles**  
7.5 oz. or  
**Chex Mix**  
8 oz.  
Selected Varieties





**30% OFF**

WITH CARD

**Island Cravings**  
2.5 - 14 oz.  
Selected Varieties



**2/\$3**

WITH CARD

**Haribo Gummi Candy**  
4 - 5 oz.  
Selected Varieties



**14<sup>99</sup>**

WITH CARD

**Hawaii Candy**  
**Assorted Wafer Cookies**  
15 oz. or  
**Puff Rice Cake**  
17 oz.



**2/\$5**

WITH CARD

**Ice Breakers or Breath Savers**  
1.27 - 1.5 oz., Selected Varieties

**269**

WITH CARD

**Cadbury Candy**  
3.5 - 4 oz. bar or  
**Hershey's Candy**  
4 - 4.6 oz. bar  
Selected Varieties



**2/\$6**

WITH CARD

**Mars M&M's Grab N Go Candy**  
Milk Chocolate or Peanut  
5 oz.,  
**Starburst**  
8 oz. stand-up bag or  
**Skittles**  
9 oz. stand-up bag



**5<sup>99</sup>**

WITH CARD

**Hershey's Candy**  
7.6 - 9.9 oz. pouch or  
10.35 - 11.3 oz.  
snack size  
Selected Varieties

**Longs Drugs**

Save more on our **Exclusive Brands this Week**

**June 29 - July 5, 2025**  
**at most Hawaii Longs Drugs**

**20% OFF**

**REGULAR PRICED  
STORE BRAND ITEMS ONLY**



Clip this coupon from our Sunday Value Book

TO REDEEM, BRING YOUR ONE TIME USE SHOPPING PASS\* TO THE STORE. (Not valid on Employee Purchases)  
This coupon is good on the following Store Brand products: CVS, Beauty 360, Blade, Caliber, Essence of Beauty, Gold Emblem, Gold Emblem Abound, Hana Paw+, Hawaiian Tradition, House to Home, Island Accents, Island Living, Island Munchies, Just The Basics, Live Better, One+Other, Pacific Breeze, Pa'ina, Pet Central, Pop-arazzi, Regal, Rely Underpads, Total Home & Well Market.

\*Maximum \$99 value. CVS Health-Longs Drugs will not accept offers printed from unauthorized internet postings or reproductions, copies or facsimiles of this offer. Original coupon must be relinquished at the time of purchase. Coupon is void if copied, transferred and where prohibited by law. This coupon excludes sale merchandise, discounted merchandise, milk, bread, alcohol, gift cards, lottery, money orders, prescriptions, postage stamps, pre-paid cards, newspapers and magazines. Valid for in-store purchases only. Coupon cannot be combined with any other CVS Health-Longs Drugs coupons. Limit one coupon per customer. No cash back. Valid one time only 6/29/25 - 7/5/25.



**Maybelline  
Beauty Tools & Cosmetics**  
Selected Varieties

Buy 1, Get 1  
**50% OFF\*\***  
WITH CARD

Spend \$25 Get  
**\$7**  
ExtraBucks® Rewards

**ExtraBucks®  
Rewards**  
offer limit of  
1 per household  
with card.



**Revlon  
Colorsilk Haircolor**  
Selected Varieties

**2/\$10**  
WITH CARD

Buy 4 Get  
**\$3**  
ExtraBucks® Rewards

**ExtraBucks®  
Rewards**  
offer limit of  
1 per household  
with card.



Buy 1, Get 1  
**50% OFF\*\***  
WITH CARD

**Covergirl  
Beauty Tools &  
Cosmetics**  
Selected Varieties



**L'Oreal Excellence Creme  
Triple Care Color**  
Selected Varieties

**11.99**  
WITH CARD

Buy 2 Get  
**\$2**  
ExtraBucks® Rewards

**ExtraBucks®  
Rewards**  
offer limit of  
1 per household  
with card.



Buy 1, Get 1  
**50% OFF\*\***  
WITH CARD

**CeraVe  
Skincare &  
Suncare**  
Selected Varieties



**6.99** WITH CARD

**Tresemme  
Shampoo or  
Conditioner**  
28 oz., Selected Varieties

**20% OFF** WITH CARD

**Hairstyling & Haircare**  
Selected Varieties  
*Sale items not included*



Buy 1, Get 1  
**50% OFF\*\***  
WITH CARD

**Banana Boat &  
Hawaiian Tropic  
Suncare**  
Selected Varieties



Buy 1, Get 1  
**50% OFF\*\***  
WITH CARD

**Ogx Haircare**  
Selected Varieties  
*Trial & Travel sizes  
not included*





**2/\$8** WITH CARD

**Dr. Bronner's Bar Soap**  
5 oz., Selected Varieties

**8<sup>99</sup>** WITH CARD

**Liquid Magic Soap**  
16 oz., Selected Varieties



**2/\$5** WITH CARD

**Salux Nylon Wash Cloth**  
No. 100  
Selected Varieties

**3<sup>99</sup>** WITH CARD

**Super Hard**  
Selected Varieties



**2/\$5** WITH CARD

**Dial Liquid Antibacterial Hand Soap**  
11 oz., Selected Varieties

**6<sup>99</sup>** WITH CARD

**Refill**  
Gold or Spring Water  
52 oz.



**Buy 1, Get 1**  
**50% OFF\*\*** WITH CARD



**Sensodyne Toothpaste**  
3.4 - 6 oz.  
Selected Varieties



**Buy 1, Get 1**  
**50% OFF\*\*** WITH CARD

**Sunstar GUM Oral Care**  
Selected Varieties



**2/\$3** WITH CARD

**Reach Dental Floss**  
Cleanburst or Mint Waxed  
55 yd.



**Buy 1, Get 1**  
**50% OFF\*\*** WITH CARD

**Listerine Antiseptics & Mouthwashes**  
8.5 - 50.7 oz.  
Selected Varieties



**25% OFF** WITH CARD

**Biotene**  
Selected Varieties



**HOT PRICE!**

*While Supplies Last!  
Sorry, No Rainchecks.*

**11<sup>99</sup>**

WITH CARD

**The Smell Good Co.  
Body Mint**  
50 count, Selected Varieties



Buy 1, Get 1

**50% OFF\*\***

WITH CARD

**Caltrate & Centrum  
Vitamins**  
Selected Varieties



**11<sup>99</sup>** WITH CARD

**Emergen-C  
Flavored Fizzy Drink Mix**  
30 count or  
**Gummies or Chewables**  
40 - 45 count  
Selected Varieties



**13<sup>99</sup>** WITH CARD

**Immune+**  
30 - 45 count  
Selected Varieties



**11<sup>99</sup>** WITH CARD

**Ensure  
Original Shakes**  
6 count  
Selected Varieties



**12<sup>99</sup>** WITH CARD

**Glucerna Shakes**  
6 count  
Selected Varieties



**HOT PRICE!**

*While Supplies Last!  
Sorry, No Rainchecks.*

Buy 1, Get 1

**FREE\*\***

WITH CARD

**Nutrex BioAstin  
Hawaiian Astaxanthin**  
4 mg. - 120 count,  
12 mg. - 50 count,  
**TumericAstin** - 30 count &  
**EyeAstin** - 60 count



**31<sup>99</sup>** WITH CARD

**Prevagen  
Regular Strength**  
Capsules or Chewables  
30 count

**42<sup>99</sup>** WITH CARD

**Extra Strength**  
Capsules or Chewables  
30 count



Buy 1, Get 1

**50% OFF\*\***

WITH CARD

**Aleve, Aleve X,  
Bayer & Midol  
Pain Relievers**  
Selected Varieties



**4<sup>99</sup>**

WITH CARD

**Ricola Drops**  
45 count or  
**Max** - 34 count  
Selected Varieties





**2/\$8**

WITH CARD

**Stayfree Pads**  
22 - 24 count or  
**Carefree Liners**  
36 - 60 count  
Selected Varieties



**2/\$5** WITH CARD

**Huggies Baby Wipes**  
56 - 64 count  
Selected Varieties

**11.99** WITH CARD

**Little Snugglers or Movers Diapers**  
16 - 32 count  
Selected Varieties



**Buy 1, Get 1**  
**50% OFF\*\***

WITH CARD

**Johnson's Baby Toiletries**  
Selected Varieties



**Buy 1, Get 1**  
**50% OFF\*\***

WITH CARD

**Bausch + Lomb Vitamins & Eye Care**  
Selected Varieties



**Buy 1, Get 1**  
**50% OFF\*\***

WITH CARD

**CVS Health First Aid & Wound Care**  
Selected Varieties



**20% OFF**

WITH CARD

**iGo & 3M Futuro Support Aids**  
Selected Varieties



**Buy 1, Get 1**  
**50% OFF\*\***

WITH CARD

**Tinactin, Lotrimin & Dr. Scholl's**  
Selected Varieties  
*Dr. Scholl's Custom Fit Orthotics Inserts not included*



**Buy 1, Get 1**  
**50% OFF\*\***

WITH CARD

**Reading Glasses, Sunglasses & Accessories**  
Selected Varieties

**\$10** ExtraBucks® when you spend \$35 on ANY of the P&G products shown on pages 12 & 13.  
 extrabucks® rewards are good for use on your next purchase. Offer limit of 2 per household with card. Other restrictions may apply.



**1.99** WITH CARD

**Crest Fluoride Toothpaste**  
 5.7 oz., Selected Varieties



Buy 1, Get 1  
**50% OFF\*\***  
 WITH CARD

**Vicks Cold Remedies**  
 Selected Varieties



**25% OFF**  
 WITH CARD

**Gillette Fusion, Proglide & Venus Cartridges**  
 4 - 12 count &  
**Razor Systems**  
 Selected Varieties



Buy 1, Get 1  
**50% OFF\*\***  
 WITH CARD

**Secret & Old Spice Deodorants**  
 Selected Varieties



**14.99** WITH CARD

**Always Discreet \*Underwear**  
 15 - 19 count or  
**Boutique** - 10 - 12 count  
**\*Pads** - 28 - 39, 48 - 54 or 66 count  
 Selected Varieties

**20% OFF**  
 WITH CARD

**Always Discreet Pads, Liners, Underwear & Boutique Underwear**  
 Selected Varieties  
 Sale items not included



Buy 1, Get 1  
**50% OFF\*\***  
 WITH CARD

**L. Pads, Liners & Tampons**  
 Selected Varieties



**8.99** WITH CARD

**Luvs Diapers**  
 20 - 32 count  
 Selected Varieties



Buy 1, Get 1  
**50% OFF\*\***  
 WITH CARD

**Native Deodorants**  
 2.65 - 3.5 oz.,  
**Body Washes, Shampoos & Conditioners**  
 Selected Varieties



**\$10** ExtraBucks® when you spend \$35 on ANY of the P&G products shown on pages 12 & 13.  
 extrabucks® rewards are good for use on your next purchase. Offer limit of 2 per household with card. Other restrictions may apply.



Buy 1, Get 1  
**50% OFF\*\***

WITH CARD

Olay  
 Face &  
 Body Skincare  
 Selected Varieties



Buy 1, Get 1  
**50% OFF\*\***

WITH CARD

Pantene Pro-V  
 Shampoos,  
 Conditioners &  
 Haircare  
 Selected Varieties



Must Buy  
**2/\$13** WITH CARD  
 or **749** WITH CARD  
 Each

Safeguard  
 Soap  
 Beige or Aloe  
 8 count



**4.99** WITH CARD

Febreze  
 Fabric Refresher  
 23.6 oz. spray  
 Selected Varieties or  
 Ocean - 16.9 oz. spray

**5.49** WITH CARD

Bounce  
 Dryer Sheets  
 80 count  
 Selected Varieties or  
 Mega - 60 count



**14.99**

WITH CARD

Tide  
 Liquid  
 Laundry  
 Detergent  
 84 - 98 oz.  
 Selected Varieties



**2/\$3**

WITH CARD

Dawn  
 Dishwashing  
 Liquid  
 7.5 oz.  
 Selected Varieties



**5.99** WITH CARD

Swiffer Sweeper  
 Wet Mopping Refills  
 12 count



**9.99** WITH CARD

Wet or Dry Cloths  
 16 - 32 count  
 Selected Varieties

**14.49** WITH CARD

Sweeping Kit

**18.49** WITH CARD

X-Large  
 Sweeping Kit



**1<sup>49</sup>** WITH CARD  
**Inkology Portfolio**  
Selected Varieties

**2<sup>59</sup>** WITH CARD  
**Notebook**  
Selected Varieties

**2<sup>99</sup>** WITH CARD  
**Pom Pen**  
Single count or  
**Gel Pens**  
3 count  
Selected Varieties



**4<sup>99</sup>** WITH CARD  
**Pukka Planet**  
**Cork Notebook**

**5<sup>99</sup>** WITH CARD  
**Cork Pencil Case**

**6<sup>99</sup>** WITH CARD  
**Cork Project Book**



**79¢** WITH CARD  
**Bazic**  
**Wirebound Notebook**  
Wide Ruled or College Ruled  
70 sheets

**89¢** WITH CARD  
**Composition Book**  
100 sheets  
Selected Varieties



**1<sup>29</sup>** WITH CARD  
**Bazic**  
**Filler Paper**  
Wide Ruled or College Ruled  
150 sheets

**2<sup>29</sup>** WITH CARD  
**Binder**  
1 in., Selected Varieties

**2<sup>59</sup>** WITH CARD  
White - 1.5 in.



**2<sup>49</sup>** WITH CARD  
**Island Heritage**  
**Portfolio**  
Selected Varieties

**5<sup>49</sup>** WITH CARD  
**Spiral Notebook**  
Selected Varieties

**5<sup>99</sup>** WITH CARD  
**Composition Book**  
Selected Varieties



**99¢** WITH CARD  
**Sharpie**  
**Permanent Marker**  
Single count  
Selected Varieties

**1<sup>89</sup>** WITH CARD  
2 count  
Selected Varieties



Buy 1, Get 1  
**50% OFF\*\***  
WITH CARD

\*Bic & 3M  
Stationery  
Products  
\*HP  
Ink Cartridges &  
Photo Paper  
Selected Varieties



**3<sup>99</sup>** WITH CARD  
**Chillz**  
**Ice Wraps**  
2 count

**13<sup>99</sup>** WITH CARD  
**Lunch Kit**  
Selected Varieties





**14<sup>99</sup>** WITH CARD  
Duracell  
Coppertop Batteries  
AA16 or AAA16

**16<sup>99</sup>** WITH CARD  
C8, D8 or 9V4

Buy 1, Get 1

**50% OFF\*\*** WITH CARD  
Specialty Batteries  
Selected Varieties



**6<sup>99</sup>**  
WITH CARD

CVS  
Alkaline  
Batteries  
\*AA8, AAA8,  
C4, D4 or 9V2  
\*Max  
AA6 or AAA6



**69<sup>99</sup>** WITH CARD

Vornado  
Whole Room  
Air Circulator  
#633

**79<sup>99</sup>** WITH CARD

Oscillating  
Tower Circulator  
#OSCR37



**69<sup>99</sup>** WITH CARD  
Tiger  
Electric  
Rice Cooker/Warmer  
5.5 cup capacity  
#JAZ-A10U

**79<sup>99</sup>** WITH CARD  
10 cup capacity  
#JAZ-A18U



**88¢** WITH CARD  
Longs  
2026 Calendar  
with Envelope  
Selected Varieties



**25% OFF**  
WITH CARD

Sony  
Earbuds &  
Headphones  
Selected Varieties



**30% OFF**  
WITH CARD

Casio Watches  
Selected Varieties



**7<sup>49</sup>** WITH CARD  
Westclox  
9 in. Wall Clock  
Selected Varieties

**30% OFF** WITH CARD  
Westclox Products  
Selected Varieties  
Sale items not included





**4<sup>99</sup>**

WITH CARD

**Locals  
Rubber Slippers**  
Sizes 6.5 - 13  
Selected Varieties



**3<sup>99</sup>** WITH CARD

**Royal Crest  
Shower Curtain  
Liner**  
70 in. x 72 in.  
Selected Varieties



**5<sup>79</sup>** WITH CARD

**Rubber Bath Mat**  
14 in. x 22.5 in.



**2/\$6**

WITH CARD

**Merrick  
Hangers**  
Tubular or Crystal  
2 - 10 count  
Selected Varieties



**2<sup>29</sup>**

WITH CARD

**Glade  
Air Freshener**  
8.3 oz. spray  
Selected Varieties



**1<sup>19</sup>** WITH CARD

**3M Tartan Masking Tape**  
0.7 in. x 60.1 yd.

**2<sup>99</sup>** WITH CARD

**3M Scotch Blue Painter's Tape**  
0.7 in. x 60 yd. or  
**3M Tartan Masking Tape**  
1.88 in. x 60.1 yd.

**5<sup>49</sup>** WITH CARD

**3M Scotch Blue Painter's Tape**  
1.41 in. x 60 yd.



**3<sup>99</sup>**

WITH CARD

**Clorox  
Disinfecting  
Bleach**  
43 oz.



**9<sup>99</sup>** WITH CARD

**Kauhale Living  
Table Cloth**  
60 in. x 60 in. or 4 ft. Luau

**12<sup>99</sup>** WITH CARD

60 in. x 84 in., 70 in. Round,  
5 ft. Luau or 6 ft. Luau

**16<sup>99</sup>** WITH CARD

6 ft. Fitted or 60 in. x 108 in.



**30% OFF**

WITH CARD

**Libman  
Cleaning Products**  
Selected Varieties



**5/\$5** WITH CARD

**Netted Sponges**  
2 count

**1.99** WITH CARD

**3M Scotch-Brite Ocelo Multi-Purpose Sponges**  
4 count

**2.69** WITH CARD

**3M Scotch-Brite Scrub Sponges**  
3 count, Selected Varieties



**2.29** WITH CARD

**Comet Cleanser with Bleach**  
21 oz.  
Selected Varieties



**3.99** WITH CARD

**Lysol All Purpose or Multi-Purpose Cleaner**  
32 oz., Selected Varieties

**4.29** WITH CARD

**Bathroom Cleaner**  
24 - 32 oz., Selected Varieties or  
**Antibacterial Kitchen Cleaner**  
22 oz.



**3.19** WITH CARD

**Tilex Daily Shower Cleaner**  
32 oz. spray

**4.99** WITH CARD

**Clorox Tilex Mold & Mildew Remover**  
32 oz. spray



**3.29**

WITH CARD

**Drano Liquid Drain Cleaner**  
32 oz.



**2.99** WITH CARD

**Wiper Zoro Zoro Cockroach Traps**  
6 count



**5.19** WITH CARD

**Combat Max Ant Killing Bait**  
6 count



**7.99** WITH CARD

**Roach Killing Bait**  
Large - 8 count or  
Small - 12 count



**4.69**

WITH CARD

**Raid Ant & Roach Killer**  
Selected Varieties or  
**Ant Killer**  
17.5 oz.



**2/\$1** WITH CARD

**Island Accents  
Wooden Chopsticks**  
30 count

**5/\$5** WITH CARD

**Bamboo Chopsticks**  
30 count

**4/\$5** WITH CARD

**Forks or Spoons**  
24 count

*Sold Exclusively at Longs!*



**2/\$5** WITH CARD

**Saran Plastic Wrap  
Premium - 100 sq. ft. or  
Cling Plus - 200 sq. ft.**

**4/79** WITH CARD

**Reynolds Wrap  
Aluminum Foil**  
75 sq. ft.



**2/\$5**

WITH CARD

**Kleenex  
Facial Tissues**  
160 count



**7.99**

WITH CARD

**Hefty  
Drawstring  
Bags**  
Large Trash  
28 count or  
Tall Kitchen  
45 count



**3.99**

WITH CARD

**Ziploc  
Freezer or  
Storage Bags**  
16 - 29 count bonus  
Selected Varieties



**2/\$8**

WITH CARD

**Ziploc  
Snack Bags**  
108 count bonus



**5.49**

WITH CARD

**Mrs. Miwako's  
Kitchen Towel**  
#00001



**2.99**

WITH CARD

**Clorox  
Disinfecting  
Wipes**  
Fresh or Lemon  
35 count





**13<sup>99</sup>**

WITH CARD

**Sun & Sky  
Kid's  
Camp Chair**  
Hippo or Lady Bug



**14<sup>99</sup>**

WITH CARD

**Sun & Sky  
Standard  
Camp Chair**  
Selected Varieties



**16<sup>99</sup>**

WITH CARD

**Sun & Sky  
Deluxe  
Camp Chair**  
Selected Varieties



**38<sup>99</sup>**

WITH CARD

**Igloo  
Wheelie Cool Cooler**  
38 qt. capacity



**25<sup>99</sup>**

WITH CARD

- \***Stella Artois Lager**  
Eighteen 11.2 oz. bottles
- \***Heineken Lager Beer**  
Premium Light  
Eighteen 12 oz. bottles or Original  
Eighteen 12 oz. bottles or cans
- \***Corona Extra Beer**  
Eighteen 12 oz. bottles or cans
- \***Kona Brewing**  
Big Wave or Longboard or **Modelo Especial Beer**  
Eighteen 12 oz. cans
- \***Pabst Blue Ribbon Beer**  
Thirty 12 oz. cans



**19<sup>99</sup>**

WITH CARD

- \***White Claw Hard Seltzer**  
Twelve 12 oz. cans  
Selected Varieties
- \***Truly Berry Mix or Maui Mix Pack Hard Seltzer**  
Twelve 12 oz. cans
- \***Kona Brewing**  
Selected Varieties or **Twisted Original Hard Iced Tea**  
Twelve 12 oz. bottles or cans



**18<sup>99</sup>**

WITH CARD

- \***Truly Hard Seltzer**  
Selected Varieties
- \***Michelob Ultra Seltzer**  
Classic Collection or Signature Collection
- \***Arizona Hard Tea**  
Green Tea or Variety
- \***Maui Brewing or Mike's Hard Lemonade Seltzer Variety Pack**
- \***Topo Chico Hard Seltzer**  
Twelve 12 oz. cans



**11<sup>99</sup>**

WITH CARD

- \***High Noon**  
Four 355 ml. cans  
Selected Varieties
- \***Maui Brewing**  
Big Swell or Bikini Blonde  
Six 12 oz. cans



**8<sup>99</sup>**

WITH CARD

- \***Maui Brewing**  
IPA or Coconut Porter  
Four 12 oz. cans
- \***Kona Spiked Tropical Punch Island Seltzer**  
Six 12 oz. cans





**5<sup>49</sup>** WITH CARD

**Pepsi Products**  
Twelve 12 oz. cans  
Selected Varieties



**2/\$10**

WITH CARD

**Coca-Cola Products**  
Ten 7.5 oz. cans  
Selected Varieties



**2/\$4**

WITH CARD

**Lion Cold Brew Coffee**  
11 oz.  
Selected Varieties



**2/\$7**

WITH CARD

**Menehune Water**  
Purified or  
Steamed Distilled  
One gallon



**10<sup>99</sup>** WITH CARD

**Dasani Water**  
Twenty-four 16.9 oz. bottles



**3/\$7**

WITH CARD

**Monster Energy Drink**  
16 oz.  
Selected Varieties



**2/\$4**

WITH CARD

**Gatorade Thirst Quencher**  
28 oz.  
Selected Varieties



**1<sup>39</sup>** WITH CARD

**Powerade Drink**  
28 oz.  
Selected Varieties



**4/\$6**

WITH CARD

**Body Armor Drink**  
16 oz.  
Selected Varieties



**2/\$4**

WITH CARD

**Celsius Sparkling Drink**  
12 oz.  
Selected Varieties





**24<sup>99</sup>** WITH CARD

- \*Natural Beer  
Ice or Light
- \*Rolling Rock Beer  
Thirty 12 oz. cans



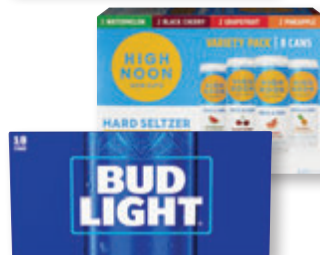
**23<sup>99</sup>** WITH CARD

**Keystone Light Beer**  
Thirty 12 oz. cans



**22<sup>99</sup>** WITH CARD

**Coors Light Beer or  
Miller Lite Beer**  
Fifteen 16 oz.  
aluminum bottles or  
Eighteen 12 oz. cans



**21<sup>99</sup>** WITH CARD

- \*High Noon  
Eight 355 ml. cans  
Selected Varieties
- \*Budweiser Beer  
Regular  
Eighteen 12 oz. cans or  
Light  
Eighteen 12 oz. bottles or cans



**17<sup>99</sup>** WITH CARD

- \*Heritage Collection Beer  
Twelve 11.2 oz. bottles
- \*Stella Artois Lager  
Twelve 11.2 oz. bottles or cans
- \*Bud Light Seltzer  
Twelve 12 oz. cans  
Selected Varieties



**16<sup>99</sup>** WITH CARD

- \*Steinlager Beer  
Pure or Regular  
Twelve 11.15 oz. bottles
- \*Beck's  
Regular German Beer  
Twelve 12 oz. bottles
- \*The Beast Unleashed  
Twelve 12 oz. cans
- \*Modelo Especial Beer  
Selected Varieties or  
Michelob  
Ultra or Ultra Pure Gold  
Twelve 12 oz. bottles or cans
- \*Budweiser Regular Beer  
Twelve 16 oz. aluminum bottles



**15<sup>99</sup>** WITH CARD

- \*Cutwater Spirits  
Four 12 oz. cans, Selected Varieties
- \*Coors Beer  
•Light - Nine 16 oz. aluminum bottles or  
Twelve 12 oz. bottles  
•Light or Banquet - Twelve 12 oz. cans
- \*Miller Lite Beer  
Nine 16 oz. aluminum bottles or  
Twelve 12 oz. bottles or cans
- \*Sapporo Beer or  
O'Doul's Non-Alcoholic Brew  
Twelve 12 oz. cans
- \*Budweiser Beer  
Light or Regular  
Twelve 12 oz. bottles or cans
- \*Bud Light Beer  
Twelve 16 oz. aluminum bottles



**13<sup>99</sup>** WITH CARD

- \*J Pop Chuhi  
Six 12 oz. cans  
Selected Varieties
- \*Natural Ice Beer  
Fifteen 12 oz. cans



**12<sup>99</sup>** WITH CARD

- \*Rolling Rock  
Extra Pale Beer or  
Pabst Blue Ribbon Beer  
Twelve 12 oz. cans
- \*Bud Ice Beer  
Twelve 12 oz. bottles or cans
- \*Keystone Light Beer  
Fifteen 12 oz. cans



**10<sup>99</sup>** WITH CARD

- \*Mike's Hard Lemonade  
Cranberry or Lemonade or  
Stella Artois Lager  
Six 11.2 oz. bottles
- \*Ola or White Claw  
Hard Seltzer  
Selected Varieties,  
Waikiki Brewing Company  
Eee Pah IPA or  
Aloha Spirit Blonde Ale or  
Golden Road Brewing  
Six 12 oz. cans



**9<sup>99</sup>** WITH CARD

- \*Smirnoff Ice  
Premium Malt Beverage  
Six 11.2 oz. bottles  
Selected Varieties
- \*Michelob  
Ultra Pure Gold  
Six 12 oz. bottles
- \*Maui Hard Seltzer  
Selected Varieties or  
Sierra Nevada  
Hazy Little Thing IPA  
Six 12 oz. cans





**39<sup>99</sup>** WITH CARD

**Don Julio  
Blanco Tequila or  
Patron Silver Tequila**  
750 ml.

**35<sup>99</sup>** WITH CARD

**Elit Eighteen Vodka**  
750 ml.

**34<sup>99</sup>** WITH CARD

**Hennessy VS Cognac**  
750 ml.

**30<sup>99</sup>** WITH CARD

**\*Koloa Kauai Rum**  
Selected Varieties  
**\*Hess Collection Allomi  
Cabernet Sauvignon Wine**  
750 ml.

**29<sup>99</sup>** WITH CARD

**Johnnie Walker Black Label  
Blended Scotch Whisky**  
750 ml.

**24<sup>99</sup>** WITH CARD

**Grey Goose Vodka**  
750 ml., Selected Varieties

**23<sup>99</sup>** WITH CARD

**\*Jameson Irish Whiskey**  
Selected Varieties  
**\*Cazadores Tequila**  
Blanco or Reposado  
750 ml.

**22<sup>99</sup>** WITH CARD

**\*Crown Royal  
Blended Whisky,  
Jack Daniel's Whiskey or  
Ketel One Vodka**  
Selected Varieties  
**\*Maker's Mark  
Bourbon Whiskey**  
750 ml.

**22<sup>99</sup>** WITH CARD **Daou**  
Paso Robles  
Cabernet Sauvignon  
750 ml.

**15<sup>99</sup>** WITH CARD Chardonnay  
750 ml.

**12<sup>99</sup>** WITH CARD Rose  
750 ml.



**19<sup>99</sup>** WITH CARD

**\*Kahlua Liqueur**  
Original or Salted Caramel  
750 ml.  
**\*Black Box or  
Bota Box Wine**  
3 liters, Selected Varieties

**18<sup>99</sup>** WITH CARD

**Meiomi Wine**  
750 ml., Selected Varieties

**17<sup>99</sup>** WITH CARD

**\*Decoy Wine**  
Selected Varieties  
**\*Tito's Handmade Vodka**  
750 ml.

**15<sup>99</sup>** WITH CARD

**\*Jim Beam Kentucky Straight  
Bourbon Whiskey or  
Malibu Rum**  
Selected Varieties  
**\*Jose Cuervo  
Especial Tequila**  
Gold or Silver

**\*La Marca Prosecco**  
Regular or Rose

**\*Jam Cellars Chardonnay**  
750 ml.

**15<sup>99</sup>** WITH CARD

**Kendall-Jackson  
Vintner's Reserve**  
Pinot Noir - 750 ml.

**Vintner's Reserve**  
Chardonnay or Rose,  
**Avant - Chardonnay or  
Grand Reserve**  
Low Calorie Chardonnay  
750 ml.

**11<sup>99</sup>** WITH CARD

**10<sup>99</sup>** WITH CARD

**Vintner's Reserve**  
Pinot Gris - 750 ml.

**14<sup>99</sup>** WITH CARD

**\*Josh Cellars**  
Cabernet Sauvignon or Merlot  
**\*Erath Pinot Noir**  
750 ml.

**14<sup>99</sup>** WITH CARD

**Hess Select Wine**  
Cabernet Sauvignon  
750 ml.

**10<sup>99</sup>** WITH CARD

Chardonnay  
750 ml.

**13<sup>99</sup>** WITH CARD

**Fleischmann's Regular Vodka**  
1.75 liters



**13<sup>99</sup>** WITH CARD **19 Crimes**  
Cali Gold Sparkling Wine  
750 ml.

**10<sup>99</sup>** WITH CARD Cali Red Blend,  
Chardonnay or Rose  
750 ml.

**8<sup>99</sup>** WITH CARD 750 ml.  
Selected Varieties

**12<sup>99</sup>** WITH CARD

**\*William Hill Estate  
Coastal Collection Wine or  
Bacardi Puerto Rican Rum**  
Selected Varieties

**\*Bread and Butter**  
Cabernet Sauvignon or Chardonnay

**\*Fireball Cinnamon Whisky or  
Southern Comfort**  
750 ml.

**11<sup>99</sup>** WITH CARD

**\*Smirnoff Vodka,  
Francis Coppola  
Diamond Collection Wine,  
Risata, Stella Rosa or  
Wente Vineyards Estate Grown**  
750 ml., Selected Varieties

**\*Rodney Strong Wine**  
Chardonnay or Sauvignon Blanc - 750 ml.

**\*Gran Legacy Vodka**  
1.75 liters - Sold Exclusively at Longs!

**10<sup>99</sup>** WITH CARD

**\*Sterling  
Vintner's Collection Wine,  
New Amsterdam Vodka,  
14 Hands Vineyards,  
Imagery Wine or  
Murphy Goode Wine**  
Selected Varieties

**\*7 Deadly Zins Red Blend**  
750 ml.

**11<sup>99</sup>** WITH CARD **Bonterra Wine**  
Cabernet Sauvignon or  
Merlot - 750 ml.

**10<sup>99</sup>** WITH CARD Chardonnay or  
Sauvignon Blanc  
750 ml.

**11<sup>99</sup>** WITH CARD **Edna Valley Vineyards**  
Cabernet Sauvignon or  
Pinot Noir - 750 ml.

**10<sup>99</sup>** WITH CARD 750 ml.  
Selected Varieties

**10<sup>99</sup>** WITH CARD

**Folie a Deux Ménage a Trois**  
Bourbon Barrels Cabernet Sauvignon  
750 ml.

**8<sup>99</sup>** WITH CARD 750 ml.  
Selected Varieties



**10<sup>99</sup>** WITH CARD

**Robert Mondavi  
Private Selection**  
Bourbon Barrels Cabernet Sauvignon  
750 ml.

**6<sup>99</sup>** WITH CARD 750 ml.  
Selected Varieties

**9<sup>99</sup>** WITH CARD

**\*Bolla Wine or  
Columbia Crest Grand Estates**  
Selected Varieties

**\*Gabbiano**  
Chianti DOCG or Pinot Grigio

**\*Angeline Pinot Noir Wine or  
Sunny with a Chance of Flowers  
Chardonnay Wine**  
750 ml.

**8<sup>99</sup>** WITH CARD **Apothic Wine**  
750 ml.  
Selected Varieties

**8<sup>89</sup>** WITH CARD **Bogle Vineyards**  
750 ml.  
Selected Varieties

**7<sup>99</sup>** WITH CARD

**Clos du Bois North Coast Wine,  
Dark Horse Wine or  
Smoking Loon California Wine**  
750 ml., Selected Varieties

**6<sup>99</sup>** WITH CARD

**Fetzer Wine or  
Cupcake Vineyards Wine**  
750 ml., Selected Varieties

**5<sup>99</sup>** WITH CARD

**CK Mondavi and Family Wine,  
Woodbridge by Robert Mondavi,  
Barefoot California Wine or  
Yellow Tail Australia Wine**  
750 ml., Selected Varieties

**2/\$9** WITH CARD

**Sutter Home California Wine**  
750 ml., Selected Varieties







**10<sup>49</sup>** WITH CARD

**Mauna Loa Macadamias**  
7 oz., Selected Varieties

**18<sup>99</sup>** WITH CARD

3 count  
Selected Varieties



**2<sup>99</sup>** WITH CARD

**Island Living Eco**

\*Luau Plates  
15 count

\*Lunch Plates,  
Bowls or  
Dessert Plates  
30 count



**22<sup>99</sup>** WITH CARD

**Mauna Loa Chocolate Macadamia Nuts**  
5 pack

**4<sup>69</sup>** WITH CARD

4.3 oz.



**25% OFF**  
WITH CARD

**Summer Savings**  
Selected Varieties  
Sale items not included



**2/\$7**

WITH CARD

**Hawaiian Sun Drinks**  
Six 11.5 oz. cans  
Selected Varieties



**25% OFF**  
WITH CARD

**Summer Toys, Swim & Dive Products & Summer Beach Toys**  
Selected Varieties



**14<sup>99</sup>** WITH CARD

**Coca-Cola Products**  
Twenty-four 12 oz. cans  
Selected Varieties



**7<sup>99</sup>** WITH CARD

**Aquafina Purified Water**  
Twenty-four 16.9 oz. bottles