



"Make Longs a Part of Your Day"

**Sale Sun., 4/13 - Sat., 4/19/25**  
at most BIG ISLAND, KAUAI & MAUI LONGS DRUGS  
Advertised items are available at participating locations

We accept all manufacturers' coupons, subject to manufacturer's restrictions.  
We reserve the right to limit sales to dealers, restaurants or institutions. General Excise Tax additional.  
Seasonal Merchandise is limited to stock on hand. Advertised items are available at participating locations.  
**LONGS 24-HOUR STORES:** Sale effective Sunday (4/13) 12:00 am thru Saturday (4/19) 12:00 midnight.  
Liquor items will be available for purchase from 6:00 am - 11:00 pm.

Find *more* deals on **longs.com**



Follow us on Social Media  
@LongsDrugsHI



**Easter Savings**  
Selected Varieties  
Sale items not included

**25% OFF**  
WITH CARD



**Hershey's or Mars  
Easter Candy**  
7.6 - 10.8 oz.  
Selected Varieties

Buy 1, Get 1  
**FREE\*\***  
WITH CARD



**Hormel Spam**  
12 oz.  
Selected Varieties

**2/5<sup>50</sup>**  
WITH CARD



**HOT PRICE!**

While Supplies Last! Sorry, No Rainchecks.

**Maui Style**  
\*Potato Chips  
6 oz., Selected Varieties

\*Shrimp Chips - 4.5 oz.

**2/\$5**  
WITH CARD

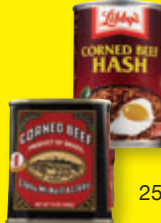
**Lay's Dip**  
15 oz., Selected Varieties

**4<sup>99</sup>** WITH CARD



**May's Hawaii  
Beef Patties**  
32 oz.  
Selected Varieties

**11<sup>99</sup>**  
WITH CARD



**Libby's Corned Beef Hash**

15 oz.

**2/\$6** WITH CARD

**McNeill & Libby Corned Beef**

Regular or  
25% Less Sodium  
12 oz.

**2/\$10** WITH CARD



**Nature Made  
Vitamins &  
Supplements**  
Selected Varieties

Buy 1, Get 1

**FREE\*\***  
WITH CARD



**L'Oreal  
Cosmetics**  
Selected Varieties

ExtraBucks®  
Rewards  
offer limit of  
1 per household  
with card.

Buy 1, Get 1  
**50% OFF\*\***  
WITH CARD

Spend \$25 Get  
**\$7**  
ExtraBucks® Rewards



**Lion Coffee**  
24 oz., Selected Varieties  
Select items  
contain 90%  
foreign-grown  
coffee

**16<sup>99</sup>** WITH CARD

**100% Kona Coffee**  
Ground or  
Whole Bean  
7 oz.

**20<sup>99</sup>** WITH CARD



**Charmin  
Mega Plus  
Bathroom Tissue**  
Ultra Soft or  
Ultra Strong  
18 count

**24<sup>99</sup>**  
WITH CARD



**Hawaiian Sun  
Drinks**  
Six 11.5 oz. cans  
Selected Varieties

**2/\$7**  
WITH CARD



**Coca-Cola  
Products**  
Twenty-four  
12 oz. cans  
Selected Varieties

**15<sup>99</sup>**  
WITH CARD



**High Noon**  
Eight 355 ml. cans  
Selected Varieties

**21<sup>99</sup>** WITH CARD

**White Claw Hard Seltzer**  
Twelve 12 oz. cans

Selected  
Varieties

**17<sup>99</sup>** WITH CARD



\***Budweiser Beer**  
Light or Regular  
\***Coors Beer**  
Light or Banquet  
\***Miller Beer**  
Lite or 64  
Thirty 12 oz. cans

**28<sup>99</sup>** WITH CARD



**Michelob Ultra**

Twenty-four  
12 oz. cans

**26<sup>99</sup>** WITH CARD

**Corona Beer or  
Heineken Lager Beer**

Twelve 12 oz.  
bottles or cans  
Selected Varieties

**16<sup>99</sup>** WITH CARD



### Clairol Root Touch-Up

Selected Varieties

**6<sup>99</sup>** WITH CARD

Temporary & Color Blending Gel  
Selected Varieties

**20% OFF** WITH CARD



### Garnier Fructis & Whole Blends Shampoos, Conditioners & Haircare

Selected Varieties

Buy 1, Get 1

**50% OFF\*\***

WITH CARD



### Olay Regenerist Skincare

Selected Varieties

**25% OFF**

WITH CARD



### Safeguard Soap

Aloe or Beige  
8 count

**6<sup>49</sup>**

WITH CARD



### Clairol Nice 'n Easy Permanent Color

Selected Varieties

**7<sup>99</sup>**

WITH CARD



### Aussie Haircare

Selected Varieties

Buy 1, Get 1

**50% OFF\*\***

WITH CARD



### St. Ives Body Wash

22 oz.  
Selected Varieties

**2/\$9**

WITH CARD



### Axe Deodorants, Shower Gels & Haircare

Selected Varieties

Buy 1, Get 1

**50% OFF\*\***

WITH CARD



### Just For Men Haircolor

Selected Varieties

**8<sup>99</sup>**

WITH CARD



### Wet n Wild Cosmetics

Selected Varieties  
Available at select stores

Buy 1, Get 1

**50% OFF\*\***

WITH CARD



### Salux Super Hard Wash Cloth

Selected Varieties

**3<sup>99</sup>**

WITH CARD

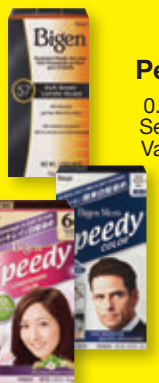


### Dove Beauty Bars

2 count  
Selected Varieties

**5<sup>49</sup>**

WITH CARD



### Hoyu Bigen Permanent Powder

0.21 oz.  
Selected Varieties

**5<sup>49</sup>**

WITH CARD



### Tweezerman Beauty Tools

Selected Varieties

Buy 1, Get 1

**50% OFF\*\***

WITH CARD



### Biore Skincare

Selected Varieties

Buy 1, Get 1

**50% OFF\*\***

WITH CARD



### Hero Cosmetics Acne & Facial Treatments

Selected Varieties

Buy 1, Get 1

**50% OFF\*\***

WITH CARD



### One+Other Cotton

Selected Varieties  
Trial & Travel sizes not included

Buy 1, Get 1

**50% OFF\*\***

WITH CARD



### Epielle Facial Skincare

Selected Varieties

**2/\$4**

WITH CARD



### Banana Boat & Hawaiian Tropic Suncare

Selected Varieties

Buy 1, Get 1

**50% OFF\*\***

WITH CARD



|  |   |  |  |
|--|---|--|--|
|  <p><b>Not Your Mother's Haircare</b><br/>Selected Varieties</p> <p>Buy 1, Get 1</p> <p><b>50% OFF**</b><br/>WITH CARD</p>  |  <p><b>Gillette Mach 3 &amp; Venus Disposable Razors</b><br/>2 - 3 count<br/>Selected Varieties</p> <p><b>6<sup>99</sup></b><br/>WITH CARD</p>  |  <p><b>Sally Hansen Bleaches, Depilatories, Nails &amp; Cosmetics</b><br/>Selected Varieties</p> <p>ExtraBucks® Rewards offer limit of 1 per household with card.</p> <p>Buy 1, Get 1</p> <p><b>50% OFF**</b><br/>WITH CARD</p> <p>Spend \$10 Get</p> <p><b>\$2</b><br/>ExtraBucks® Rewards</p> |  <p><b>Kiss Nails, Lashes &amp; Accessories</b><br/>Selected Varieties</p> <p>Buy 1, Get 1</p> <p><b>50% OFF**</b><br/>WITH CARD</p> |
|  <p><b>Irene Gari Cover Your Gray Haircolor</b><br/>Selected Varieties</p> <p><b>25% OFF</b><br/>WITH CARD</p>   |  <p><b>Gillette Sensor2 or Daisy Classic Disposable Razors</b><br/>10 - 12 count<br/>Selected Varieties</p> <p><b>8<sup>99</sup></b><br/>WITH CARD</p>   |  <p><b>Physicians Formula Cosmetics &amp; Skincare</b><br/>Selected Varieties<br/><i>Available at select stores</i></p> <p><b>30% OFF</b><br/>WITH CARD</p>  |  <p><b>Old Spice Body Wash</b><br/>Selected Varieties</p> <p>Buy 1, Get 1</p> <p><b>50% OFF**</b><br/>WITH CARD</p>                 |
|  <p><b>Goody Hair Accessories</b><br/>Selected Varieties</p> <p>Buy 1, Get 1</p> <p><b>50% OFF**</b><br/>WITH CARD</p>   |  <p><b>CVS Health Hair Regrowth</b><br/>Selected Varieties</p> <p>Buy 1 Get</p> <p><b>\$5</b><br/>ExtraBucks® Rewards</p> <p>ExtraBucks® Rewards offer limit of 1 per household with card.</p> |  <p><b>Beauty 360 &amp; CVS Health Facial Wipes, Towelettes &amp; Cleansers</b><br/>Selected Varieties</p> <p><i>Sold Exclusively at Longs!</i></p> <p>Buy 1, Get 1</p> <p><b>50% OFF**</b> WITH CARD</p>  |  <p><b>CVS Health Pads 24 - 48 count or Liners 68 - 135 count</b><br/>Selected Varieties</p> <p><b>2/\$8</b><br/>WITH CARD</p>     |
|  <p><b>CVS Health Cortisone or Itch Relief Cream</b></p> <p>One oz. Selected Varieties</p> <p><b>3<sup>99</sup></b> WITH CARD</p> <p><b>*Antibiotic Ointment or Cream</b></p> <p><b>*Bacitracin</b></p> <p>One oz. Selected Varieties</p> <p><b>5<sup>99</sup></b> WITH CARD</p>                        |  <p><b>3M Nexcare</b><br/>Selected Varieties</p> <p>Buy 1, Get 1</p> <p><b>40% OFF**</b><br/>WITH CARD</p>  |  <p><b>CVS Health Acetaminophen, Ibuprofen &amp; Naproxen Sodium</b><br/>Selected Varieties<br/><i>Children's, PM, Trial &amp; Travel sizes not included</i></p> <p>Buy 1, Get 1</p> <p><b>50% OFF**</b> WITH CARD</p>  |  <p><b>iGo Supports</b><br/>Selected Varieties</p> <p><b>20% OFF</b><br/>WITH CARD</p>  |
|  <p><b>CVS Health Rollator</b><br/>#792519</p> <p><b>99<sup>99</sup></b> WITH CARD</p>  <p><b>Medical Equipment</b><br/>Selected Varieties</p> <p><b>20% OFF</b> WITH CARD</p> <p><i>Sale items not included</i></p> |  <p><b>CVS Health External Pain Patches, Creams &amp; Gels</b><br/>Selected Varieties</p> <p>Buy 1, Get 1</p> <p><b>50% OFF**</b><br/>WITH CARD</p>  |  <p><b>Nexium 24 Hr.</b><br/>42 count<br/>Selected Varieties</p> <p><b>25<sup>99</sup></b><br/>WITH CARD</p>   |  <p><b>Blink Eye Drops</b><br/>Selected Varieties</p> <p>Buy 1, Get 1</p> <p><b>50% OFF**</b><br/>WITH CARD</p>                   |



**Crest &  
Oral-B  
3D White**  
Selected Varieties  
Buy 1, Get 1  
**50% OFF\*\***  
WITH CARD



**Nature's Truth  
Vitamins &  
Essential Oils**  
Selected Varieties  
Buy 1, Get 1  
**FREE\*\***  
WITH CARD



**\*Carefree Pads**  
28 count  
Selected Varieties  
**\*Stayfree Pads**  
48 count  
**\*Carefree  
Liners**  
93 count  
**2/\$14** WITH CARD  
**Carefree Pads**  
40 count **9.99** WITH CARD



**Huggies Pull-Ups**  
17 - 23 count  
Selected Varieties  
**12.99** WITH CARD



**Aim Toothpaste**  
4.4 - 5.5 oz.  
Selected Varieties  
**4/\$5** WITH CARD



**Nutrex  
\*BioAstin  
Hawaiian  
Astaxanthin**  
4 mg. - 60 count  
**\*Spirulina**  
500 mg. - 200 count  
**11.99**  
WITH CARD



**TENA  
Pads & Guards**  
Selected Varieties  
Buy 1, Get 1  
**50% OFF\*\***  
WITH CARD



**Huggies  
Wipes**  
168 - 192 count  
Selected Varieties  
**7.99**  
WITH CARD



**Colgate Toothpaste**  
6 oz., Selected Varieties  
**2/\$5** WITH CARD



**Nutrex  
BioAstin  
Hawaiian  
Astaxanthin  
Gummies**  
60 count  
**23.99**  
WITH CARD



**Gas-X &  
Benefiber**  
Selected Varieties  
Buy 1, Get 1  
**50% OFF\*\***  
WITH CARD



**Gerber  
Baby Food  
Products**  
Selected Varieties  
Buy 1, Get 1  
**50% OFF\*\***  
WITH CARD



**Oral-B  
Vitality Rechargeable  
Toothbrush**  
**21.99** WITH CARD  
**Replacement  
Brush Heads**  
3 count, Selected Varieties  
**20% OFF** WITH CARD



**Scope  
Mouthwash**  
Classic or Outlast  
One liter  
**4.99**  
WITH CARD



**Halls  
Throat or  
Cough  
Drops**  
20 - 30 count  
Selected Varieties  
**2/\$6**  
WITH CARD



**Aveeno  
Baby Care &  
Johnson's  
Baby Toiletries**  
Selected Varieties  
Buy 1, Get 1  
**50% OFF\*\***  
WITH CARD



**Glide  
Dental Floss**  
43.7 - 54.6 yd.  
Selected Varieties  
**2/\$8** WITH CARD  
**Threader Floss**  
30 count **4.99** WITH CARD



**TheraBreath  
Oral Care**  
Selected Varieties  
**25% OFF**  
WITH CARD



**U.S. Jaclean  
Bamboo Vinegar  
Detox Patch**  
8 count  
**9.99** WITH CARD  
32 count **24.99** WITH CARD



**Q-Tips  
Cotton Swabs**  
500 count  
**2/\$9**  
WITH CARD



# Easter Savings

|   |   |   |  |
|---|---|---|--|
|  <p><b>Easter Chocolate Bunnies &amp; Boxed Chocolates</b><br/>Selected Varieties</p> <p><b>30% OFF</b><br/>WITH CARD</p>  |  <p><b>Peeps Hot Chocolate Kit</b><br/>7.75 oz. <b>8<sup>99</sup></b> WITH CARD</p> <p><b>Plush Gift Set</b><br/>1.5 oz. <b>10<sup>99</sup></b> WITH CARD</p>   |  <p><b>Cadbury Creme Egg</b><br/>16 count or<br/><b>Akamai Easter Gift Basket</b></p> <p><b>19<sup>99</sup></b> WITH CARD</p>  |  <p><b>\$3 and Under</b><br/>WITH CARD</p> <p><b>Basket Stuffers</b><br/>Selected Varieties</p>  |
|  <p><b>*Dove Easter Chocolates</b><br/>7.94 - 8.87 oz.</p> <p><b>*Hershey's or Cadbury Easter Candy</b><br/>13.1 - 16.1 oz.</p> <p><b>6<sup>99</sup></b> WITH CARD<br/>Selected Varieties</p> |  <p><b>*Mars Chocolate &amp; Fruity Favorites</b><br/>16.46 oz.</p> <p><b>*Cadbury Dark Chocolate Mini Eggs - 16 oz.</b></p> <p><b>*Licensed Egg Hunt Candy Filled Eggs</b><br/>14 or 16 count <b>7<sup>99</sup></b> WITH CARD</p>         |  <p><b>Just Born Marshmallow Peeps</b><br/>8 - 10 count<br/>Selected Varieties or<br/><b>Delights Chocolate Dipped Peeps</b><br/>3 count</p> <p><b>2/\$4</b> WITH CARD</p>  |  <p><b>\$5 and Under</b><br/>WITH CARD</p> <p><b>Basket Stuffers</b><br/>Selected Varieties</p>   |
|  <p><b>Hershey's, Mars or Ferrara Easter Candy</b><br/>15 - 22.11 oz.<br/>Selected Varieties</p> <p><b>9<sup>99</sup></b> WITH CARD</p>   |  <p><b>*Hershey's Easter Snack Size</b><br/>28 - 46.88 oz. stand-up bag<br/>Selected Varieties</p> <p><b>*Mars Minis Mix</b><br/>34.85 oz.</p> <p><b>*Sour Patch Kids/ Swedish Fish</b><br/>37.92 oz. <b>16<sup>99</sup></b> WITH CARD</p> |  <p><b>Assorted Jelly Beans</b><br/>9 - 14.5 oz.<br/>Selected Varieties<br/>Jelly Belly not included <b>3<sup>99</sup></b> WITH CARD</p> <p><b>Jelly Belly Jelly Beans</b><br/>7 - 9 oz. Selected Varieties <b>4<sup>39</sup></b> WITH CARD</p> |  <p><b>Licensed Easter Jumbo Plastic Bucket</b><br/>Selected Varieties</p> <p><b>5<sup>99</sup></b> WITH CARD</p>  |
|  <p><b>Cottondale Easter Eggs</b><br/>16 &amp; 32 count<br/>Selected Varieties</p> <p><b>Buy 1, Get 1 FREE</b> **<br/>WITH CARD</p>  |  <p><b>Cottondale Golden Eggs</b><br/>2 count <b>99¢</b> WITH CARD</p> <p><b>Cottondale Easter Eggs</b><br/>6 or 8 count<br/>Selected Varieties <b>1<sup>99</sup></b> WITH CARD</p>   |  <p><b>Cottondale or Easter Unlimited Easter Grass</b><br/>1.5 oz.<br/>Selected Varieties</p> <p><b>2/\$3</b> WITH CARD</p>  |  <p><b>Easter Gift Box Small</b><br/>Selected Varieties</p> <p><b>99¢</b> WITH CARD</p>   |
|  <p><b>Mega Toys Easter Baskets</b><br/>Selected Varieties</p> <p><b>30% OFF</b><br/>WITH CARD</p>  |  <p><b>PAAS Egg Decorating Kit</b><br/>Classic <b>2/\$4</b> WITH CARD</p> <p>Deluxe <b>2<sup>99</sup></b> WITH CARD</p>  |  <p><b>Cottondale Wooden DIY Set</b><br/>Selected Varieties <b>1<sup>49</sup></b> WITH CARD</p> <p><b>Dig Egg</b> <b>1<sup>99</sup></b> WITH CARD</p>   |  <p><b>Medium</b><br/>Selected Varieties <b>1<sup>99</sup></b> WITH CARD</p> <p><b>Large</b><br/>Selected Varieties <b>2<sup>99</sup></b> WITH CARD</p> |
|  <p><b>Easter Plush</b><br/>Selected Varieties<br/>Sale items not included</p> <p><b>25% OFF</b><br/>WITH CARD</p>  |  <p><b>Spring Toys</b><br/>Selected Varieties<br/>Sale items not included</p> <p><b>25% OFF</b><br/>WITH CARD</p>  |  <p><b>Light Up Spinner</b><br/>Selected Varieties</p> <p><b>1<sup>99</sup></b> WITH CARD</p>   |  |



|   |   |  |   |  |  |  |   |
|---|---|--|---|--|--|--|---|
|  <p><b>Lawry's Chili Mix</b><br/>1.48 oz. or<br/><b>Spaghetti Sauce Mix</b><br/>1.5 oz.<br/><b>4/\$5</b> WITH CARD<br/><b>Garlic Salt</b><br/><b>449</b> WITH CARD<br/>11 oz.</p>  |  <p><b>Campbell's Spaghetti</b><br/>15.6 - 15.8 oz.<br/>Selected Varieties<br/><b>3/\$5</b> WITH CARD<br/><b>Condensed Cream Soup</b><br/>Mushroom or Chicken<br/>10.5 oz.<br/><b>4/\$7</b> WITH CARD</p>   |  <p><b>Mori-Nu Silken Tofu</b><br/>10.8 - 10.9 oz.<br/>Selected Varieties<br/><b>2/\$4</b> WITH CARD<br/><b>House Foods Chinese Mabo Tofu Sauce</b><br/>5.29 oz., Selected Varieties<br/><b>2/\$7</b> WITH CARD</p>   |  <p><b>Sapporo Ichiban Noodles</b><br/>3.5 oz.<br/>Selected Varieties<br/><b>5/\$5</b> WITH CARD</p>  |  <p><b>Farmer John Wieners</b><br/>8 count<br/><b>2/\$4</b> WITH CARD<br/><b>Love's Hot Dog Rolls or Hamburger Buns</b><br/>8 count<br/><b>549</b> WITH CARD</p>                                     |  <p><b>Diamond Bakery Soda Crackers</b><br/>13 oz.<br/>Selected Varieties<br/><b>2/850</b> WITH CARD<br/><b>Hawaiian Shortbread Macadamia Nut Cookies</b><br/>4 oz.<br/>Selected Varieties<br/><b>429</b> WITH CARD</p>  |  <p><b>Nabisco Toasted Chips</b><br/>7.1 - 8.1 oz.<br/>Selected Varieties<br/><b>2/\$8</b> WITH CARD<br/><b>Oreo</b><br/>10.68 - 18.71 oz.<br/>family size<br/>Selected Varieties<br/><b>2/\$9</b> WITH CARD</p>   |  <p><b>Hawaiian Host Chocolate Covered Macadamias</b><br/>8 oz.<br/>Selected Varieties<br/><b>999</b> WITH CARD<br/><b>Mauna Loa Macadamias</b><br/>3 pack<br/><b>1899</b> WITH CARD<br/>Selected Varieties</p>   |
|  <p><b>Hunt's Pasta Sauce</b><br/>24 oz.<br/>Selected Varieties<br/><b>3/\$5</b> WITH CARD<br/><b>Barilla Pasta</b><br/><b>2/\$4</b> WITH CARD<br/>One lb.<br/>Selected Varieties</p>   |  <p><b>Snow's Clams</b><br/>Minced or Chopped<br/>6.5 oz.<br/><b>219</b> WITH CARD<br/><b>Snow's New England Clam Chowder</b><br/>Condensed or Ready To Serve<br/>15 oz.<br/><b>2/\$5</b> WITH CARD</p>  |  <p><b>Shirakiku Sukiyaki No Tomo</b><br/>Dr wt. 8.75 oz.<br/><b>269</b> WITH CARD<br/><b>Fukujinzuke</b><br/>Regular or Tokyozuke Style<br/>5.29 oz.<br/><b>299</b> WITH CARD</p>   |  <p><b>Mr. Brown 3 In 1 Coffee or Tea</b><br/>30 count<br/>Selected Varieties<br/><b>549</b> WITH CARD</p>   |  <p><b>Kraft Singles</b><br/>10.7 - 12 oz.<br/>Selected Varieties<br/><b>379</b> WITH CARD<br/><b>Oscar Mayer Deli Fresh Meat</b><br/>7 - 9 oz.<br/>Selected Varieties<br/><b>499</b> WITH CARD</p> |  <p><b>Hearth &amp; Harvest Bread</b><br/>White or Wheat<br/>22 oz.<br/><b>599</b> WITH CARD</p>  |  <p><b>Loacker Quadratini Wafer Cookies</b><br/>8.82 oz.<br/>Selected Varieties<br/><b>399</b> WITH CARD</p>  |  <p><b>Hawaiian Sun Macadamia Nuts</b><br/>2 oz., Selected Varieties<br/><b>2/\$6</b> WITH CARD<br/><b>Island Traditions</b><br/>3 oz.<br/><b>369</b> WITH CARD</p>  |
|  <p><b>Van Camp's Pork &amp; Beans or Dark Red Kidney Beans</b><br/>15 oz.<br/><b>4/\$5</b> WITH CARD</p>  |  <p><b>Lipton Soup Secrets Noodle Soup</b><br/>2 count<br/><b>3/\$5</b> WITH CARD<br/><b>Recipe Secrets Onion Soup &amp; Dip Mix</b><br/>2 count<br/><b>2/\$4</b> WITH CARD</p>   |  <p><b>Mezzetta Peppers</b><br/>16 oz.<br/>Selected Varieties<br/><b>2/\$6</b> WITH CARD</p>  |  <p><b>Nestle Mini Marshmallows Hot Cocoa Mix</b><br/>8 count<br/><b>2/\$4</b> WITH CARD<br/><b>Nestle Nesquik Chocolate Powder</b><br/>20.1 oz.<br/><b>599</b> WITH CARD</p>   |  <p><b>Lunchables</b><br/>3.2 - 4.3 oz.<br/>Selected Varieties or Dunkables<br/>2 - 2.9 oz.<br/>Selected Varieties<br/><b>2/\$4</b> WITH CARD</p>  |  <p><b>Pillsbury Crescents, Cinnamon Rolls or Cornbread Swirls</b><br/>8 - 12.4 oz.<br/>Selected Varieties<br/><b>2/\$5</b> WITH CARD</p>  |  <p><b>Crunchy Cravings Snacks</b><br/>7 oz.<br/>Selected Varieties<br/><b>399</b> WITH CARD<br/><b>Paradise Valley Trail Mix</b><br/>7 oz.<br/>Selected Varieties<br/><b>599</b> WITH CARD</p>  |  <p><b>Hawaii Candy Wun Tun Strips or Puff Rice Cakes</b><br/>3 oz.<br/>Selected Varieties<br/><b>379</b> WITH CARD</p>   |
|  <p><b>Carrots</b><br/>One lb.<br/><b>149</b> WITH CARD<br/><b>Celery</b><br/>One sleeve<br/><b>239</b> WITH CARD<br/><b>Sweet Onions</b><br/>2 lb.<br/><b>369</b> WITH CARD<br/><b>Potatoes</b><br/>5 lb.<br/><b>399</b> WITH CARD</p> |  <p><b>Lindsay Olives</b><br/>Sliced - Dr. wt. 2.25 oz. or Chopped - Dr. wt. 4.25 oz.<br/><b>3/\$5</b> WITH CARD<br/><b>Large Pitted</b><br/>Dr. wt. 6 oz.<br/><b>199</b> WITH CARD<br/><b>Fresh Catch Creamy Dressing</b><br/>12 oz.<br/><b>659</b> WITH CARD</p> |  <p><b>Bertolli Olive Oil</b><br/>16.9 oz.<br/>Selected Varieties<br/><b>799</b> WITH CARD<br/><b>Dole Pineapple in Heavy Syrup</b><br/>8.25 oz.<br/>Selected Varieties<br/><b>2/\$3</b> WITH CARD<br/><b>Fruit Cups in Juice or in Gel</b><br/>4 count<br/><b>399</b> WITH CARD</p> |  <p><b>SunHearth Milk</b><br/>One gallon<br/>Selected Varieties<br/><b>749</b> WITH CARD<br/><b>General Mills Chex Cereal</b><br/>Rice or Corn - 12 oz.<br/><b>2/\$6</b> WITH CARD<br/><b>Chex Mix Bars</b><br/>6 count, Selected Varieties<br/><b>2/\$7</b> WITH CARD</p> |  <p><b>Claussen Pickles or Sauerkraut</b><br/>24 - 32 oz.<br/>Selected Varieties<br/><b>399</b> WITH CARD<br/>Located in Fridge</p>   |  <p><b>Betty Crocker Super Moist Cake Mix</b><br/>13.25 - 14.25 oz., Selected Varieties<br/>Delights Cake Mix not included<br/><b>Must Buy 5/\$5</b> WITH CARD<br/>or <b>149</b> WITH CARD Each<br/><b>Frosting</b><br/>16 oz., Selected Varieties<br/><b>2/\$4</b> WITH CARD</p> |  <p><b>P-Nuttles</b><br/>6 - 18 oz. big bag<br/>Selected Varieties<br/><b>399</b> WITH CARD<br/><b>Nature Valley Chewy Granola Bars</b><br/>S'mores or Double Chocolate<br/>5 count<br/><b>2/\$7</b> WITH CARD<br/><b>Mott's Fruit Snacks</b><br/>Apple or Variety Pack<br/>22 count<br/><b>499</b> WITH CARD</p> |  <p><b>Hershey's Candy</b><br/>3.5 - 6 oz. box or 5 pack<br/><b>2/\$3</b> WITH CARD<br/>2.2 - 5 oz. king size<br/>Selected Varieties<br/><b>2/\$4</b> WITH CARD<br/><b>Altoids Mints</b><br/>1.76 oz.<br/>Selected Varieties<br/><b>279</b> WITH CARD<br/><b>Wrigley's Sugarfree Gum</b><br/>40 - 60 count<br/>Selected Varieties<br/><b>369</b> WITH CARD</p> |



**Monster Energy Drink**  
16 oz.  
Selected Varieties  
**3/\$7**

WITH CARD



**Coca-Cola Products**  
2 liters  
Selected Varieties  
**2/750**

WITH CARD



**Powerade Drink**  
28 oz.  
Selected Varieties  
**2/350**

WITH CARD



**Bang Energy Drink**  
16 oz.  
Selected Varieties  
**3/650**

WITH CARD



**Coca-Cola Products**  
Six 7.5 oz. cans  
Selected Varieties  
**3/\$13**

WITH CARD



**Powerade Sport Drinks**  
Eight 20 oz. bottles  
Selected Varieties  
**799**

WITH CARD



**Starbucks Frappuccino**  
13.7 oz.  
Selected Varieties  
**2/\$6**

WITH CARD



**Dasani Water**  
Twenty-four 16.9 oz. bottles  
**1099**

WITH CARD



**Menehune Water**  
Purified or Steamed Distilled  
One gallon  
**2/\$7**

WITH CARD



**Pure Leaf Tea**  
18.5 oz.  
Selected Varieties  
**2/\$4**

WITH CARD



**Dole or Ocean Spray Juice**  
15.2 oz.  
Selected Varieties  
**3/\$5**

WITH CARD



**Hawaiian Tradition Arare Candy**  
2.3 - 3 oz. or  
Candy - 2.5 oz.  
Selected Varieties  
**4/\$5**

WITH CARD



**Jack Link's Jerky**  
2.85 oz.  
Selected Varieties  
**2/\$9**

WITH CARD



**Zapp's Pretzels**  
5 oz.  
Selected Varieties  
**399**

WITH CARD



**Simply Snacks**  
7.5 - 8.5 oz.  
Selected Varieties  
**2/\$9**

WITH CARD



**Doritos Tortilla Chips**  
6 - 10.75 oz.  
Selected Varieties  
**2/\$10**

WITH CARD



**Chex Mix Multipack**  
Cheddar or Traditional  
10 count  
**499**

WITH CARD



**Maebo's One-Ton Chips**  
4 oz.  
**399**

WITH CARD



**Cape Cod Potato Chips**  
7.5 - 8 oz.  
Selected Varieties  
**2/\$8**

WITH CARD



**Aloha Gourmet Peanut Cake or Mix Nut Crunch**  
3.25 - 8 oz.  
Selected Varieties  
**279**

WITH CARD



**Blue Diamond Almonds**  
16 oz.  
Selected Varieties  
**799**

WITH CARD



**Auntie Liu's Peanuts**  
10.6 oz.  
Selected Varieties  
**599**

WITH CARD



**Planters Peanuts**  
12 oz.  
Selected Varieties  
**219**

WITH CARD



**Aloha Gourmet Da Big Pounder Arare**  
14 - 16 oz.  
Selected Varieties  
**2/\$8**

WITH CARD





### Kauhale Living Table Cloth

60 in. x 60 in. or 4 ft. Luau **9<sup>99</sup>** WITH CARD

60 in. x 84 in.,  
70 in. Round,  
5 ft. Luau or 6 ft. Luau **12<sup>99</sup>** WITH CARD

6 ft. Fitted or  
60 in. x 108 in. **16<sup>99</sup>** WITH CARD



### Kauhale Living Hawaiian Fabric Table Mats

4 count **9<sup>99</sup>** WITH CARD



### 3M Duct Tape

Multi Use  
1.88 in. x 30 yd. **3<sup>99</sup>** WITH CARD



Pro Strength  
1.88 in. x 60 yd. **7<sup>99</sup>** WITH CARD



### CVS Alkaline Batteries

\*AA16, AAA16, C8, D8 or 9V4  
\*Max - AA12 or AAA12

**9<sup>99</sup>** WITH CARD



### Kauhale Living Hawaiian Table Runner

13 in. x 72 in.

**8<sup>99</sup>** WITH CARD



### Mr. Clean Magic Eraser

Extra Durable  
2 count **2<sup>99</sup>** WITH CARD

Original  
6 count **5<sup>49</sup>** WITH CARD



### Pic Citronella Mosquito Coils

10 count **4/\$5** WITH CARD

Mosquito Coils  
10 count **1<sup>99</sup>** WITH CARD



### 2000 Flushes Automatic Toilet Bowl Cleaner

1.25 oz. or 3.5 oz.

Selected Varieties **2/\$7** WITH CARD

TRR Toilet Ring Remover - 32 oz. **8<sup>29</sup>** WITH CARD



### Oxi Clean Selected Varieties

**25% OFF** WITH CARD



### Charmin Mega Roll Bathroom Tissue

4 count

**6<sup>99</sup>** WITH CARD

## For Our Graduates



### Flora-Dec Graduation Selected Varieties

**25% OFF** WITH CARD



### Max Imports Yarn Selected Varieties

**2/\$7** WITH CARD



### KC Hawaii Kukui Nut Lei Selected Varieties

**3<sup>99</sup>** WITH CARD

Painted  
Selected Varieties **5<sup>99</sup>** WITH CARD

Mongo Shell  
Selected Varieties **7<sup>99</sup>** WITH CARD



### Universal Worldwide Trading Eyelash Ribbon Lei

Selected Varieties **3<sup>99</sup>** WITH CARD



### Universal Worldwide Trading Boxed Ribbon Lei

#40026  
Selected Varieties **7<sup>99</sup>** WITH CARD

Selected Varieties **11<sup>99</sup>** WITH CARD



### Max Imports Na Lei Lihilihi Braided Ribbon Lei Selected Varieties

**4<sup>49</sup>** WITH CARD



### Max Imports Na Lei Lihilihi Ali'i/Nani Combo Lei Selected Varieties

**10<sup>99</sup>** WITH CARD



### Max Imports Funcraft Organza Ribbon Selected Varieties

**2/\$8** WITH CARD

Ribbon  
Selected Varieties **5<sup>49</sup>** WITH CARD



### Island Heritage Lei Kit Selected Varieties

**2/\$8** WITH CARD



### Max Imports Maile Style Braid Ribbon Lei Selected Varieties

**11<sup>99</sup>** WITH CARD





# Duracell Coppertop Batteries

AA8, AAA8,  
C4, D4 or 9V2

**949**

WITH CARD



# World Centric 6 in. Plates

20 count

**2/\$5**

WITH CARD



# Bowls

11.5 oz. capacity or

# 9 in. Plates

20 count

**429**

WITH CARD



# Scott Choose-A-Sheet Paper Towels

6 count

**729**

WITH CARD



# Tide Simply Pods

Fresh Linen or  
Refreshing Breeze  
13 count

**2/\$7**

WITH CARD



# Liquid Laundry Detergent

Daybreak Fresh or  
Refreshing Breeze  
32 oz.

**379**

WITH CARD



# Kitchen Helper Sink Strainer

Single  
count

**199**

WITH CARD

# Bathroom Helper Basin Strainer

2 count

**269**

WITH CARD



# World Centric Cups

Selected Varieties

**30% OFF**

WITH CARD



# Dawn Ez-Squeeze Dishwashing Liquid

Platinum - 18 oz. or  
Regular - 22 oz.

**399**

WITH CARD



# Liquid-Plumr Clog Destroyer Gel

80 oz.

**899**

WITH CARD



# Aloha Fresh Slider Bags

15 - 25 count, Selected Varieties

**169**

WITH CARD



# Netted Sponges

5 count

**159**

WITH CARD



# Lysol Toilet Bowl Cleaner

24 oz.

Selected Varieties

**269**

WITH CARD



# Kitchen Helper Stainless Steel Tong

Mini - 7 in.

**99¢**

WITH CARD

9.5 in.

**159**

WITH CARD

12 in.

**199**

WITH CARD



# Clorox Disinfecting Wipes

Fresh or  
Crisp Lemon  
35 count

**299**

WITH CARD



# Dawn Scrubber Sponges

3 count

Selected Varieties

**499**

WITH CARD



# Febreze Air Air Refresher

8.8 oz.

Selected Varieties

**399**

WITH CARD



# Clorox \*Multi-Surface Disinfecting Mist

Lemongrass Mandarin or  
Eucalyptus Peppermint  
10 oz.

# \*Disinfecting Wet Mopping Cloths

12 count

**499**

WITH CARD



# Combat Roach Killing Bait

Large - 8 count or  
Small - 12 count

**699**

WITH CARD



# Black Flag Ant & Roach Killer

17.5 oz.

Selected Varieties

**419**

WITH CARD



# Kleenex Facial Tissue

72 count

**5/\$5**

WITH CARD





**Patron Silver Tequila or Don Julio Blanco Tequila**  
750 ml. **39<sup>99</sup>**

**Jameson Irish Whiskey**  
750 ml. **24<sup>99</sup>**  
Selected Varieties



**\*Grey Goose Vodka or Baileys Irish Cream Liqueur**  
750 ml., Selected Varieties **\*1800 Silver Tequila**  
750 ml. **25<sup>99</sup>**



**Ketel One Vodka**  
750 ml., Selected Varieties **23<sup>99</sup>**

**Jack Daniel's Whiskey or Crown Royal Blended Whisky**  
750 ml., Selected Varieties **22<sup>99</sup>**



**Meiomi Wine**  
750 ml., Selected Varieties **18<sup>99</sup>**

**Decoy Wine**  
Selected Varieties or **Tito's Handmade Vodka**  
750 ml. **17<sup>99</sup>**

**GET 10% OFF** when you buy 6 or more gift sets or bottles of wine and/or spirits  
Bottles 375 ml. or below are excluded

**Mix & match!** Selection, availability and pricing may vary by store and does not include applicable local, county, state or federal taxes. We reserve the right to limit quantities on all items. Regular retail prices quoted may vary in some stores. Beverage items are "CRV" where required by law. Alcoholic beverages available only in licensed stores. All beer & wine sold at minimums where state law regulates pricing.

**\*Koloa Kauai Rum** - Selected Varieties  
**\*Johnnie Walker Black Label Blended Scotch Whisky**  
750 ml. **30<sup>99</sup>**

**Bulleit Whiskey**  
Bourbon or Rye - 750 ml. **26<sup>99</sup>**

**\*Cazadores Tequila**  
Blanco or Reposado  
**\*Ocean Vodka**  
750 ml. **24<sup>99</sup>**

**Kahlua Liqueur**  
Original or Salted Caramel  
750 ml. **23<sup>99</sup>**

**\*Daou Paso Robles Cabernet Sauvignon** - 750 ml.  
**\*Maker's Mark Bourbon Whiskey**  
750 ml. **22<sup>99</sup>**

**La Crema Sonoma Wine** - 750 ml.  
Pinot Noir Chardonnay **22<sup>99</sup> 16<sup>99</sup>**

**Black Box or Bota Box Wine**  
3 liters, Selected Varieties **19<sup>99</sup>**

**\*Captain Morgan Rum, Malibu Rum or Jim Beam Kentucky Straight Bourbon Whiskey**  
Selected Varieties

**\*La Marca Prosecco** - Regular or Rose  
**\*Jam Cellars Chardonnay, Erath Pinot Noir or Rodney Strong Chalk Hill Chardonnay Wine**  
750 ml. **15<sup>99</sup>**

**Josh Cellars Cabernet Sauvignon or Merlot** - 750 ml. **14<sup>99</sup>**

**Beringer Brothers Wine**  
Red Blend or Cabernet Sauvignon or 750 ml. **14<sup>49</sup>**

**\*Edna Valley Vineyards, Bacardi Puerto Rican Rum or Kim Crawford Marlborough**  
750 ml., Selected Varieties

**\*Evan Williams Kentucky Straight Bourbon Whiskey**  
Regular or Honey Reserve - 750 ml.

**\*Fleischmann's Regular Vodka**  
1.75 liters **13<sup>99</sup>**

**19 Crimes Wine**  
Cali Gold Sparkling  
750 ml. **13<sup>99</sup>**  
750 ml. **8<sup>99</sup>**  
Selected Varieties

**\*Korbel California Champagne**  
Selected Varieties or **Korbel Prosecco**  
**\*Sauza Tequila** - Gold or Silver  
**\*Fireball Cinnamon Whisky or Southern Comfort**  
750 ml. **12<sup>99</sup>**

**\*Captain Morgan's Parrot Bay Rum, Imagery Wine, Risata or Wente Vineyards Estate Grown**  
750 ml., Selected Varieties

**\*Black Velvet Canadian Whisky, Hess Select Cabernet Sauvignon Wine, 7 Deadly Zins Red Blend or Sonoma Cutrer Chardonnay Wine**  
750 ml. **11<sup>99</sup>**

**14 Hands Vineyards, Matua or Sterling Vintner's Collection Wine**  
750 ml. **10<sup>99</sup>**  
Selected Varieties

**Folie A Deux Ménage a Trois**  
Bourbon Barrels Cabernet Sauvignon  
750 ml. **10<sup>99</sup>**  
750 ml. **8<sup>99</sup>**  
Selected Varieties

**Bolla Wine** - Selected Varieties, **Angeline Pinot Noir Wine or Early Times Kentucky Whisky**  
750 ml. **9<sup>99</sup>**

**Bogle Vineyards**  
750 ml., Selected Varieties **8<sup>89</sup>**

**Dark Horse Wine or Smoking Loon California Wine**  
750 ml., Selected Varieties **7<sup>99</sup>**

**Fetzer Wine or Robert Mondavi Private Selection**  
750 ml., Selected Varieties **6<sup>99</sup>**

**Barefoot California Wine, CK Mondavi and Family Wine or Yellow Tail Australia Wine**  
750 ml. **5<sup>99</sup>**  
Selected Varieties

**Sutter Home California Wine**  
750 ml., Selected Varieties **4<sup>99</sup>**



**Jose Cuervo Especial Tequila**  
Gold or Silver  
750 ml. **15<sup>99</sup>**

**Francis Coppola Diamond Collection Wine**  
750 ml., Selected Varieties **13<sup>99</sup>**



**\*Smirnoff Vodka or Stella Rosa**  
750 ml. **10<sup>99</sup>**  
Selected Varieties

**\*Kendall-Jackson Avant - Chardonnay, Grand Reserve Low Calorie Chardonnay or Vintner's Reserve Chardonnay or Rose**  
750 ml. **11<sup>99</sup>**



**New Amsterdam Vodka**  
Selected Varieties **10<sup>99</sup>**  
750 ml.

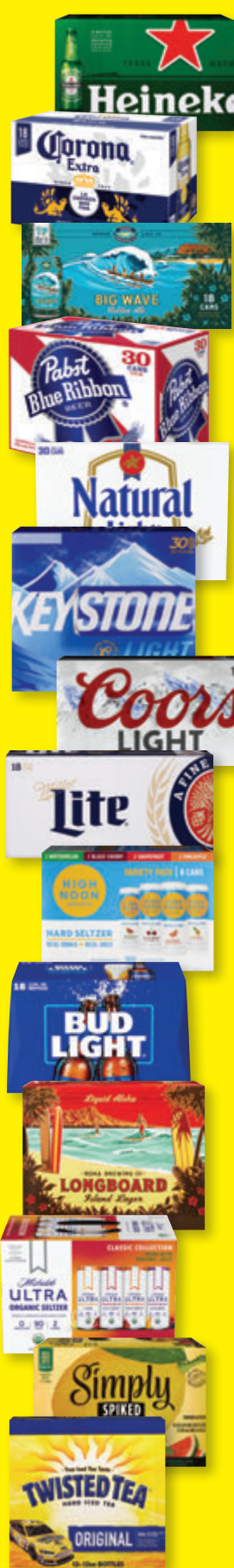
**Murphy Goode Wine**  
Selected Varieties **9<sup>99</sup>**  
750 ml.



**Apothic Wine or Clos du Bois North Coast Wine**  
750 ml., Selected Varieties **8<sup>99</sup>**

**Woodbridge by Robert Mondavi**  
750 ml., Selected Varieties **5<sup>99</sup>**





**\*Stella Artois Lager**  
Eighteen 11.2 oz. bottles

**\*Heineken Lager Beer**  
Original or Premium Light  
Eighteen 12 oz. bottles or Original  
Eighteen 12 oz. cans

**\*Corona Extra Beer**  
Eighteen 12 oz. bottles or cans

**\*Modelo Especial Beer**  
Eighteen 12 oz. cans

**\*Kona Brewing**  
Big Wave or Longboard  
Eighteen 12 oz. cans

**\*Pabst Blue Ribbon Beer**  
Thirty 12 oz. cans

**25<sup>99</sup>**

**Natural Beer**  
Ice or Light,  
**Rolling Rock Beer or Keystone Light Beer**  
Thirty 12 oz. cans

**23<sup>99</sup>**

**Coors Light or Miller Lite Beer**  
Fifteen 16 oz. aluminum bottles or Eighteen 12 oz. cans

**22<sup>99</sup>**

**High Noon**  
Eight 355 ml. cans  
Selected Varieties or  
**Budweiser Beer**  
Light - Eighteen 12 oz. bottles or  
Light or Regular  
Eighteen 12 oz. cans

**21<sup>99</sup>**

**\*Kona Brewing**  
Twelve 12 oz. bottles or cans  
Selected Varieties

**\*Michelob Ultra Seltzer**  
Classic or Signature Collection

**\*Nectar Seltzer**  
Variety Pack or Azuiki

**\*Corona Refresca, Simply Spiked Lemonade or Vizzy Hard Seltzer Variety Pack**

**\*Truly Berry Mix or Maui Mix Pack Hard Seltzer**  
Twelve 12 oz. cans

**\*Twisted Original Hard Iced Tea**  
Twelve 12 oz. bottles or cans

**19<sup>99</sup>**



**\*Truly Hard Seltzer**  
Selected Varieties

**\*The Beast Unleashed, Topo Chico Hard Seltzer or Maui Brewing Variety Pack**  
Twelve 12 oz. cans

**18<sup>99</sup>**

**\*Heritage Collection Beer**  
Twelve 11.2 oz. bottles

**\*Bud Light Seltzer or White Claw Hard Seltzer**  
Twelve 12 oz. cans  
Selected Varieties

**\*Beck's Regular German Beer**  
Twelve 12 oz. bottles

**17<sup>99</sup>**

**\*Steinlager Beer**  
Pure or Regular  
Twelve 11.15 oz. bottles

**\*Stella Artois Lager**  
Twelve 11.2 oz. bottles or cans

**\*Modelo Especial Beer**  
Selected Varieties

**\*Michelob Ultra**  
Regular or Pure Gold  
Twelve 12 oz. bottles or cans

**\*Bud Light Beer**  
Next - Twelve 12 oz. cans,  
Lime or Platinum  
Twelve 12 oz. bottles or cans

**16<sup>99</sup>**

**\*Jack Daniel's Perfect Mix**  
Four 355 ml. cans, Selected Varieties

**\*Cutwater Spirits**  
Four 12 oz. cans, Selected Varieties

**\*Coors Beer**  
•Light - Nine 16 oz. aluminum bottles or Twelve 12 oz. bottles  
•Light or Banquet - Twelve 12 oz. cans

**\*Miller Lite Beer**  
Nine 16 oz. aluminum bottles or Twelve 12 oz. bottles or cans

**\*Budweiser Beer**  
Light or Regular  
•Twelve 12 oz. bottles or cans  
•Twelve 16 oz. aluminum bottles

**\*O'Doul's Non-Alcoholic Brew**  
Twelve 12 oz. cans

**\*Sapporo Beer**  
Twelve 12 oz. cans

**15<sup>99</sup>**

**\*Crown Royal**  
Four 355 ml. cans  
Selected Varieties

**\*Kirin Ichiban Beer**  
Twelve 12 oz. bottles or cans

**\*Natural Ice Beer**  
Fifteen 12 oz. cans

**13<sup>99</sup>**



**\*Funny Water**  
Classic or Sweet & Spicy  
Twelve 12 oz. cans

**\*Pabst Blue Ribbon Beer**  
Twelve 12 oz. cans

**\*Keystone Light Beer**  
Fifteen 12 oz. cans

**12<sup>99</sup>**

**\*High Noon**  
Four 355 ml. cans  
Selected Varieties

**\*Maui Brewing**  
Big Swell or Bikini Blonde

**\*Waikiki Brewing Company**  
Eee Pah IPA or Aloha Spirit Blonde Ale  
Six 12 oz. cans

**\*Bud Ice Beer**  
Twelve 12 oz. bottles

**\*Rolling Rock Extra Pale Beer**  
Twelve 12 oz. cans

**11<sup>99</sup>**

**\*Jack Daniel's Country Cocktails**  
Six 10 oz. bottles  
Selected Varieties

**\*Ola Hard Seltzer**  
Selected Varieties or  
**Kona Spiked Tropical Punch Island Seltzer**  
Six 12 oz. cans

**10<sup>99</sup>**

**\*Smirnoff Ice Premium Malt Beverage**  
Selected Varieties

**\*Mike's Hard Lemonade**  
Cranberry or Lemonade

**\*Stella Artois Lager**  
Six 11.2 oz. bottles

**\*Maui or White Claw Hard Seltzer**  
Selected Varieties

**\*Sierra Nevada IPA Hazy Little Thing**  
Six 12 oz. cans

**9<sup>99</sup>**

**\*Maui Brewing**  
Coconut Porter or IPA  
Four 12 oz. cans

**\*Michelob Ultra Pure Gold**  
Six 12 oz. bottles

**8<sup>99</sup>**

**Soonhari or Jinro Soju**  
375 ml., Selected Varieties

**4<sup>99</sup>**