



"Make Longs a Part of Your Day"

**Sale Sun., 5/11 - Sat., 5/17/25**  
at most BIG ISLAND, KAUAI & MAUI LONGS DRUGS  
Advertised items are available at participating locations

We accept all manufacturers' coupons, subject to manufacturer's restrictions.  
We reserve the right to limit sales to dealers, restaurants or institutions. General Excise Tax additional.  
Seasonal Merchandise is limited to stock on hand. Advertised items are available at participating locations.  
**LONGS 24-HOUR STORES:** Sale effective Sunday (5/11) 12:00 am thru Saturday (5/17) 12:00 midnight.  
Liquor items will be available for purchase from 6:00 am - 11:00 pm.

Find *more* deals on **longs.com**



Follow us on Social Media



@LongsDrugsHI



**Summer Savings**  
Selected Varieties

**25% OFF**  
WITH CARD



**HOT PRICE!**

While Supplies Last! Sorry, No Rainchecks.

**Libby's  
Luncheon Loaf**  
12 oz.

**1.99** WITH CARD



**HOT PRICE!**

While Supplies Last! Sorry, No Rainchecks.

**Asian Garden  
Shrimp**  
16/20 count, 2 lb. bag

**9.99** WITH CARD



**C&H  
Pure Cane Sugar**

One lb.  
Selected  
Varieties

**2/\$4** WITH CARD

Granulated  
4 lb.

**4.99** WITH CARD



**Nestle Carnation  
Evaporated Milk**

12 oz.

**1.79** WITH CARD

**Sweetened Condensed Milk**

14 oz.

**2.79** WITH CARD



**Maui Style  
\*Potato Chips**

6 oz., Selected Varieties

**\*Shrimp  
Chips**  
4.5 oz.

**2/\$5** WITH CARD

**Lay's Dip**  
15 oz.  
Selected Varieties

**4.99** WITH CARD



**CVS Health  
Vitamins &  
Supplements**  
Selected Varieties

Buy 1, Get 1

**FREE\*\*** WITH CARD



**Banana Boat &  
Hawaiian Tropic  
Suncare**

Selected Varieties

Buy 1, Get 1

**50% OFF\*\***

WITH CARD



**Scott  
Double Roll  
Choose-A-Sheet  
Paper Towels**  
6 count

**7.29**

WITH CARD



**Hawaiian Sun  
Drinks**

Six 11.5 oz. cans  
Selected Varieties

**2/\$7**

WITH CARD



**Coca-Cola  
Products**

Twenty-four  
12 oz. cans  
Selected Varieties

**15.99**

WITH CARD



**Aquafina  
Purified Water**

Twenty-four 16.9 oz. bottles

**8.49**

WITH CARD



**High Noon**  
Eight 355 ml. cans  
Selected Varieties

**21.99** WITH CARD

**White Claw Hard Seltzer**  
Twelve 12 oz. cans

Selected  
Varieties

**17.99** WITH CARD



**\*Budweiser Beer**

Light or Regular

**\*Coors Beer**

Light or Banquet

**\*Miller Beer**

Lite or 64

Thirty 12 oz. cans

**28.99** WITH CARD



**Michelob Ultra**

Twenty-four  
12 oz. cans

**26.99**

WITH CARD

**Corona Beer or  
Heineken Lager Beer**

Twelve 12 oz.  
bottles or cans  
Selected Varieties

**16.99** WITH CARD



**Colgate Toothpaste**  
2.5 oz. + 60% More Free  
Selected Varieties

**5/\$5** WITH CARD



**Nature's Truth  
Vitamins &  
Essential Oils**  
Selected Varieties

Buy 1, Get 1

**FREE**\*\*

WITH CARD



**CVS Health  
First Aid &  
Woundcare**  
Selected Varieties

Buy 1, Get 1

**50% OFF**\*\*

WITH CARD



**Always Infinity,  
Radiant & Pure Cotton  
Pads & Liners**  
Selected Varieties

Buy 1,  
Get 1 **50% OFF**\*\* WITH CARD



**Colgate  
Extra Clean  
Toothpaste**  
Soft, Medium or Firm

**5/\$5**

WITH CARD



**\*Flintstones &  
One A Day  
Vitamins  
\*Citracal**  
Selected Varieties

Buy 1, Get 1

**50% OFF**\*\*

WITH CARD



**Cortizone-10**  
Selected Varieties

Buy 1, Get 1

**50% OFF**\*\*

WITH CARD



**CVS Health  
Pads  
24 - 48 count or  
Liners  
68 - 135 count**  
Selected Varieties

**2/\$8**

WITH CARD



**Crest &  
Oral-B  
3D White**  
Selected Varieties

Buy 1, Get 1

**50% OFF**\*\*

WITH CARD



**Vitafusion &  
L'il Critters  
Vitamins &  
Digestives**  
Selected Varieties

Buy 1, Get 1

**50% OFF**\*\*

WITH CARD



**KT Tape  
Original, Pro &  
Pro Extreme**  
20 count  
Selected Varieties

Buy 1, Get 1

**50% OFF**\*\*

WITH CARD



**Vagisil &  
Summer's Eve  
Feminine Care**  
Selected Varieties

Buy 1, Get 1

**50% OFF**\*\*

WITH CARD



**Reach  
Dental Floss**  
Cleanburst or  
Mint Waxed  
55 yd.

**2/\$3**

WITH CARD



**Tums Antacids**  
Selected Varieties

Buy 1, Get 1

**40% OFF**\*\*

WITH CARD



**Excedrin**  
24 - 200 count  
Selected Varieties

Buy 1, Get 1

**50% OFF**\*\*

WITH CARD



**CVS Health  
Fitted Briefs,  
Underwear,  
Protective Pads,  
Guards & Shields**  
Selected Varieties

Buy 1, Get 1

**50% OFF**\*\* WITH CARD



**Sea-Bond  
Denture Adhesives**  
30 count &  
**Efferdent  
Denture Cleansers**  
44 - 126 count  
Selected Varieties

Buy 1, Get 1

**50% OFF**\*\* WITH CARD



**Iberogast  
Liquid Drops**  
0.67 oz.

**6.99** WITH CARD

30 softgels or  
Liquid Drops  
1.69 oz.

**16.99** WITH CARD



**Ricola Drops**  
19 - 24 count  
Selected Varieties

**2/4.50**

WITH CARD



**\*The Sock  
Travel Socks &  
Anti Skid  
Compression Socks  
\*Celeste Stein  
Supports &  
Compression Socks**  
Selected Varieties

**20% OFF** WITH CARD





**Muscle Milk Protein Shakes** - 4 count & Powders  
Selected Varieties

Buy 1, Get 1

**50% OFF\*\*** WITH CARD



**Liquid I.V. Drink Mix**  
6 count  
Selected Varieties

**9.99** WITH CARD



**CVS Health Antiseptic Mouthwash**  
Blue Mint or Green Mint  
1.5 liters

**4.99** WITH CARD



**Huggies Wipes**  
168 - 192 count  
Selected Varieties

**7.99** WITH CARD



**Pull-Ups**  
17 - 23 count  
Selected Varieties

**12.99** WITH CARD



**Six Star, Premier Protein & Optimum Nutrition Supplements**  
Selected Varieties

**20% OFF** WITH CARD



**Vital Proteins \*Collagen Peptides**  
10 oz.  
\*Protein Powder  
Vanilla - 1.68 lb. or Chocolate - 1.72 lb.  
Available at select stores

**23.99** WITH CARD



**Blink Eye Drops**  
Selected Varieties

Buy 1, Get 1


**50% OFF\*\*** WITH CARD



**Thera Tears & Clear Eyes Eye Care**  
Selected Varieties

Buy 1, Get 1

**50% OFF\*\*** WITH CARD



**Omron & CVS Health Blood Pressure Monitors**  
Selected Varieties

**20% OFF** WITH CARD



**TENA Pads & Guards**  
Selected Varieties

Buy 1, Get 1

**50% OFF\*\*** WITH CARD



**CVS Health External Pain Patches, Creams & Gels**  
Selected Varieties

Buy 1, Get 1

**50% OFF\*\*** WITH CARD



**Wet N Wild Cosmetics**  
Selected Varieties

Buy 1, Get 1

**50% OFF\*\*** WITH CARD



**Rogaine**  
Selected Varieties

**20% OFF** WITH CARD



**Gold Bond**  
Selected Varieties

Buy 1, Get 1

**50% OFF\*\*** WITH CARD



**Bic Razors**  
Selected Varieties

Buy 1, Get 1

**50% OFF\*\*** WITH CARD



**Hello Deodorant**  
2.6 oz., Selected Varieties

**5.99** WITH CARD



**Native Deodorant**  
2.65 - 3.5 oz.  
Selected Varieties

**10.99** WITH CARD



**Biosilk & Keratin Haircare**  
Selected Varieties

**20% OFF** WITH CARD



**St. Ives Body Wash**  
22 oz.  
Selected Varieties

**2/\$9** WITH CARD



**Braun Blue Mobile Shave**  
#M-60b

**15.99** WITH CARD

**Shavers & Trimmers**  
Selected Varieties

Sale items not included **20% OFF** WITH CARD



**One+Other, Scunci & Conair Hair Accessories**  
Selected Varieties  
One+Other is Sold Exclusively at Longs!

Buy 1, Get 1

**50% OFF\*\*** WITH CARD



**CVS Health Acne Cleansers & Treatments**  
Selected Varieties

Buy 1, Get 1

**50% OFF\*\*** WITH CARD



**One+Other Cotton**  
Selected Varieties  
Trial & Travel sizes not included

Buy 1, Get 1

**50% OFF\*\*** WITH CARD

Sold Exclusively at Longs!



**10<sup>99</sup>**  
WITH CARD  
Buy 2 Get  
**\$2**  
ExtraBucks® Rewards

**L'Oreal Excellence Creme Triple Care Color**  
Selected Varieties  
ExtraBucks® Rewards  
offer limit of 1 per household with card.



**Garnier Fructis & Whole Blends Shampoos, Conditioners & Haircare**  
Selected Varieties  
Buy 1, Get 1  
**50% OFF\*\***  
WITH CARD



**Sally Hansen Bleaches, Depilatories, Nails & Cosmetics**  
Selected Varieties  
ExtraBucks® Rewards  
offer limit of 1 per household with card.

Buy 1, Get 1  
**50% OFF\*\***  
WITH CARD  
Spend \$10 Get  
**\$2**  
ExtraBucks® Rewards



**Olay Regenerist Skincare**  
Selected Varieties  
**25% OFF**  
WITH CARD



**L'Oreal Feria Permanent Haircolor**  
Selected Varieties  
ExtraBucks® Rewards  
offer limit of 1 per household with card.

**11<sup>99</sup>**  
WITH CARD  
Buy 2 Get  
**\$2**  
ExtraBucks® Rewards



**CS Being 100% Cotton Puffs**  
110 count  
**2/\$4**  
WITH CARD



**Ardell Eyelashes, Eyebrows & Duo Products**  
Selected Varieties  
Buy 1, Get 1  
**50% OFF\*\***  
WITH CARD



**Olay Body Care**  
Selected Varieties  
Buy 1, Get 1  
**50% OFF\*\***  
WITH CARD



**Clairol Nice 'n Easy Permanent Color**  
Selected Varieties  
**7<sup>99</sup>**  
WITH CARD



**One+Other Implements & Beauty Tools**  
Selected Varieties  
Buy 1, Get 1  
**50% OFF\*\***  
WITH CARD



**Physicians Formula Cosmetics & Skincare**  
Selected Varieties  
Available at select stores  
**30% OFF**  
WITH CARD



**Old Spice Body Washes**  
Selected Varieties  
Buy 1, Get 1  
**50% OFF\*\***  
WITH CARD



**Clairol Root Touch-Up**  
Selected Varieties  
**6<sup>99</sup>** WITH CARD  
Temporary & Color Blending Gel  
Selected Varieties  
**20% OFF** WITH CARD



**Biore Skincare**  
Selected Varieties  
Buy 1, Get 1  
**50% OFF\*\***  
WITH CARD



**Differin Skincare**  
Selected Varieties  
**25% OFF**  
WITH CARD



**Salux Striped Nylon Wash Cloth**  
Selected Varieties  
**2/\$5**  
WITH CARD



**Ogx Haircare**  
Selected Varieties  
Trial & Travel sizes not included  
Buy 1, Get 1  
**50% OFF\*\***  
WITH CARD



**Premium & Hawaiian Gift Sets & Fragrances**  
Selected Varieties  
**15% OFF**  
WITH CARD



**Purell Hand Sanitizer**  
8 oz. pump Selected Varieties  
**2<sup>99</sup>** WITH CARD  
Foam Naturals or Moisturizing 10 oz.  
**3<sup>99</sup>** WITH CARD



**Softsoap Hand Soap**  
7.5 oz. Selected Varieties  
**2/\$3** WITH CARD  
Refill - 50 oz. Selected Varieties  
**6<sup>49</sup>** WITH CARD



# Baking Foods



**Waxtex Waxed Paper**  
75 sq. ft. **1<sup>89</sup>** WITH CARD

**Reynolds Kitchens Parchment Paper**  
45 sq. ft. **3<sup>59</sup>** WITH CARD



**Pam Cooking Spray**  
Butter - 5 oz. or Original - 6 oz. **6<sup>29</sup>** WITH CARD



**Jet-Puffed Marshmallows**  
12 oz. or Mini - 10 oz. **2/\$3** WITH CARD



**Betty Crocker Super Moist Cake Mix**  
13.25 - 14.25 oz. **2/\$3** WITH CARD

Selected Varieties

**Frosting**  
16 oz. Selected Varieties **2/\$4** WITH CARD



**Reynolds Kitchens Pastel Baking Cups**  
50 count **69¢** WITH CARD

**\*Reynolds Party Baking Cups**  
36 count

**\*Reynolds Kitchens Designer Mini Baking Cups**  
100 count **99¢** WITH CARD



**Sun-Maid California Sun Dried Raisins**  
6 count **3<sup>59</sup>** WITH CARD

20 oz. **7<sup>49</sup>** WITH CARD



**Ghirardelli Baking Chips**  
10 - 12 oz. Selected Varieties **5<sup>99</sup>** WITH CARD



**Pillsbury Ready To Bake Cookie Dough**  
16 oz. Selected Varieties **3<sup>99</sup>** WITH CARD



**Keebler Ready Crust**  
3 in. - 9 in. Selected Varieties **2/\$6** WITH CARD



**Hawaii Island Pure Honey**  
Macadamia or Lehua-Wildflower 12 oz. **8<sup>99</sup>** WITH CARD



**Mishima Furikake**  
1.5 - 1.9 oz. Selected Varieties **3<sup>99</sup>** WITH CARD

**Gen-Ji-Mai Quick Cooking Whole Grain Brown Rice**  
4.4 lb. **8<sup>99</sup>** WITH CARD



**Shirakiku Udon**  
7 - 7.25 oz. Selected Varieties **1<sup>19</sup>** WITH CARD



**Nescafe Taster's Choice Instant Coffee Packets**  
16 - 18 count Selected Varieties **2/\$8** WITH CARD

**Nestle Coffeemate Flavored Creamer**  
15 oz. Selected Varieties **4<sup>99</sup>** WITH CARD



**Orville Redenbacher's Popcorn**  
3 count Selected Varieties **3<sup>29</sup>** WITH CARD



**Bananas**  
3 lb. **4<sup>29</sup>** WITH CARD

**Tangerines**  
3 lb. **4<sup>99</sup>** WITH CARD

**Fuji Apples**  
3 lb. **5<sup>69</sup>** WITH CARD

**Strawberries**  
One lb. **7<sup>99</sup>** WITH CARD



**Sea Alaska Pink Salmon**  
7.5 oz. **2/\$5** WITH CARD



**Kraft Dressing**  
16 oz. Selected Varieties **2/\$6** WITH CARD



**Enjoy California Maki**  
3 oz....

**\*Arare Pop**  
Caramel Butter or Furikake Butter 3.5 oz. **2/\$7** WITH CARD



**Nature Valley Bars**  
12 count Selected Varieties or **Jamba Fruit Snack**  
Mango A Go Go or Strawberry Surf Rider 14 count **6<sup>49</sup>** WITH CARD



**Kasugai Gummy Candy**  
3.59 - 3.77 oz. Selected Varieties **2/\$5** WITH CARD

**Marukawa Fusen Gum**  
60 count **3<sup>99</sup>** WITH CARD



**Storck Werther's Caramel Popcorn**  
5.29 oz. or **Knoppers**  
Milk Hazelnut Wafer 5.3 oz. **2<sup>99</sup>** WITH CARD



# Baking Foods

**Jell-O Gelatin Dessert**  
0.3 - 3 oz., Selected Varieties or  
**Instant Pudding & Pie Filling**  
1.4 - 3.9 oz., Selected Varieties

**4/\$5** WITH CARD

**Knox Unflavored Gelatine**  
4 count

**2/\$5** WITH CARD

**Cool Whip Whipped Topping**  
8 oz. Selected Varieties

**219** WITH CARD

**Philadelphia Cream Cheese**  
Original or 1/3 Less Fat

**399** WITH CARD

**Gold Medal Flour**  
5 lb.

**Must Buy 2/\$7** WITH CARD  
or **399** EACH WITH CARD

**Darigold Butter**  
Salted or Unsalted One lb.

**699** WITH CARD

**Philadelphia Frosting Cream Cheese**  
16 oz.

**399** WITH CARD

**Cheesecake No Bake Filling**  
24.3 oz.

**499** WITH CARD

**Argo Baking Powder**  
12 oz. or Corn Starch 16 oz.

**2/\$5** WITH CARD

**Jif Peanut Butter**  
15.5 - 16 oz. Selected Varieties

**2/\$6** WITH CARD

**Mauna Loa Dry Roasted Chopped Macadamia Nuts**  
6 oz.

**999** WITH CARD

**Comstock Pie Filling & Topping**  
21 oz. Selected Varieties

**499** WITH CARD

**Betty Crocker Brownie Mix**  
16.3 - 18.4 oz.

**2/\$3** WITH CARD

**Cookie Mix**  
17.5 oz. Selected Varieties

**2/\$5** WITH CARD

**Hawaii's Best Hawaiian Powder Mix**  
5.6 - 16.5 oz. Selected Varieties

**549** WITH CARD

**Taco Bell Cravings Kit**  
Queso-Burrito - 21.5 oz. or Crunchwrap Supreme 22.6 oz.

**699** WITH CARD

**Taco Bell Dip or Salsa Con Queso**  
15 - 15.7 oz. Selected Varieties

**2/\$7** WITH CARD

**Taco Bell Shells Regular or Flavored**  
12 count Selected Varieties

**2/\$5** WITH CARD

**Taco Bell Seasoning Mix**  
One oz.

**4/\$3** WITH CARD

**Taco Bell Sauce**  
7.5 oz., Selected Varieties

**2/\$3** WITH CARD

**Sinaloa Flour Tortilla**  
10 count

**399** WITH CARD

**Early California Olives**  
Sliced Dr. wt. 2.25 oz. or Chopped Dr. wt. 4.25 oz.

**2/\$4** WITH CARD

**Kraft Cheese Shredded or Chunk**  
7 - 8 oz.

**329** WITH CARD

**Daisy Sour Cream or Cottage Cheese**  
16 oz. Selected Varieties

**329** WITH CARD

**Maxwell House Instant Coffee**  
8 oz.

**599** WITH CARD

**Sanka Instant Coffee**  
8 oz.

**659** WITH CARD

**Nestle Coffeemate Refrigerated Creamer**  
32 oz. Selected Varieties

**599** WITH CARD

**The Original Cookkwee's Maui Cookies**  
6 oz. Selected Varieties

**2/\$8** WITH CARD

**Love's Pie**  
4.5 oz. Selected Varieties

**329** WITH CARD

**Love's Bread**  
White or Wheat 22.5 oz.

**699** WITH CARD

**Nutella Biscuits**  
9.7 oz.

**2/\$8** WITH CARD

**Choward's Gum or Fine Mints**  
8 - 15 count Selected Varieties

**5/\$5** WITH CARD

**Royal Kona Coffee**  
8 oz. or 12 count Selected Varieties  
*Select items contain 90% foreign-grown coffee*

**929** WITH CARD

**100% Kona Coffee**  
Ground or Whole Bean 7 oz.

**2199** WITH CARD

**Nabisco Chips Ahoy Ritz Crackers**  
7 - 13 oz. or 11.8 - 13.7 oz. Selected Varieties

**2/\$8** WITH CARD

**Diamond Bakery \*Hawaiian Shortbread Cookies**  
4.4 oz., Selected Varieties

**\*Royal Creem Crackers**  
8 oz., Selected Varieties

**\*Saloon Pilot Crackers**  
Original or Low Sodium/No Cholesterol - 7 oz.

**2/\$8** WITH CARD

**Mars or Wrigley Candy**  
1.08 - 2.17 oz. Selected Varieties

**4/\$5** WITH CARD

**Hershey's Candy**  
3.5 - 6 oz. Box Selected Varieties

**2/\$3** WITH CARD

7.2 - 11.3 oz. share pack, pouch or snack size Selected Varieties

**599** WITH CARD

**Enjoy Assorted Lei**  
2.3 - 2.5 oz.

**399** WITH CARD

**xD Gummy Pineapple Lei**  
3.38 oz.

**459** WITH CARD

**Campbell's Condensed Cream Soup**  
Chicken or Mushroom 10.5 oz.

**4/\$7** WITH CARD

**Lipton Soup Secrets Noodle Soup**  
2 count

**3/\$5** WITH CARD

**Recipe Secrets Onion Soup & Dip Mix**  
2 count

**2/\$4** WITH CARD

**Golden Grain Pasta**  
Tri-Color Rotini - 12 oz., Angel Hair, Linguine, Rotelli or Rigatoni 16 oz.

**3/\$5** WITH CARD

**Hunt's Pasta Sauce**  
24 oz. Selected Varieties

**3/\$5** WITH CARD

**Tomatoes**  
14.5 oz. Selected Varieties

**2/\$4** WITH CARD

**Hunt's Tomato Sauce**  
8 oz. Selected Varieties

**5/\$5** WITH CARD

**Tomato Paste**  
6 oz.

**4/\$5** WITH CARD

**Mori-Nu Silken Tofu**  
10.8 - 10.9 oz.

**2/\$4** WITH CARD

**House Foods Chinese Mabo Tofu Sauce**  
5.29 oz. Selected Varieties

**2/\$7** WITH CARD

**Chicken Of The Sea \*Sardines**  
3.75 oz. Selected Varieties

**\*Chunk Light Tuna**  
in Water or in Oil - 5 oz.

**4/\$5** WITH CARD

**Kellogg's Cereal Rice Krispies**  
9 oz., Original Crispix 9.6 oz. or Cocoa Krispies 12.6 oz.

**2/\$8** WITH CARD

**Palm Corned Beef**  
7.25 oz.

**349** WITH CARD

**S&W Beans**  
15 - 15.5 oz. Selected Varieties

**119** WITH CARD

**Fatboy Ice Cream**  
4 - 9 count Selected Varieties

**699** WITH CARD

**Kraft Cheese Shredded or Chunk**  
7 - 8 oz.

**329** WITH CARD

**Hawaiian Host AlohaMacs Chocolate**  
Milk Chocolate or Dark Chocolate 5 oz.

**599** WITH CARD

**Hawaiian Host Chocolate Covered Macadamias**  
8 oz. Selected Varieties

**999** WITH CARD

**Mauna Loa Macadamias**  
3 pack, Selected Varieties

**1899** WITH CARD

**Love's Bread**  
White or Wheat 22.5 oz.

**699** WITH CARD

**Choward's Gum or Fine Mints**  
8 - 15 count Selected Varieties

**5/\$5** WITH CARD

**Voortman Sugar Free Cookies**  
8 oz. Selected Varieties

**2/\$9** WITH CARD

**Hawaiian Host Chocolate Covered Macadamias**  
8 oz. Selected Varieties

**999** WITH CARD

**Mauna Loa Macadamias**  
3 pack, Selected Varieties

**1899** WITH CARD

**Hawaiian Host Chocolate Covered Macadamias**  
8 oz. Selected Varieties

**999** WITH CARD





### Coca-Cola Products

Twelve 12 oz. cans  
Selected Varieties

**9<sup>29</sup>** WITH CARD



### Monster Energy Drink

16 oz.  
Selected Varieties

**3/\$7**

WITH CARD



### Pepsi Products

Twelve 12 oz. cans  
Selected Varieties

**6<sup>49</sup>** WITH CARD



### Pepsi Products

Ten 7.5 oz. cans  
Selected Varieties

**2/\$11** WITH CARD



### Lion Cold Brew Coffee

11 oz.  
Selected Varieties

**2/\$4**

WITH CARD



### Gatorade Thirst Quencher

28 oz.  
Selected Varieties

**2/\$4**

WITH CARD



### Glaceau Vitamin Water

20 oz.  
Selected Varieties

**2/4<sup>50</sup>**

WITH CARD



### Reign Energy Drink

16 oz.  
Selected Varieties

**3/6<sup>50</sup>**

WITH CARD



### Reign Storm Energy Drink

12 oz.  
Selected Varieties

**2/\$5**

WITH CARD



### Bang Energy Drink

16 oz.  
Selected Varieties

**3/6<sup>50</sup>**

WITH CARD



### Well Market Cashews

8 oz.  
Selected Varieties

**4<sup>99</sup>**

WITH CARD

Sold Exclusively at Longs!



### HOT PRICE!

While Supplies Last!  
Sorry, No Rainchecks.

### Field Trip Jerky

2.2 oz.  
Selected Varieties

**3<sup>99</sup>** WITH CARD



### HOT PRICE!

While Supplies Last!  
Sorry, No Rainchecks.

### Enjoy Chips or Sticks

3.53 oz., Selected Varieties

**2/\$7** WITH CARD



### Wonderful Roasted & Salted Pistachios

24 oz.

**13<sup>99</sup>**

WITH CARD



### Chacha Sunflower Seeds

8.82 oz.  
Selected Varieties

**2/6<sup>50</sup>**

WITH CARD



### Snyder's of Hanover Seasoned Pretzels

11.25 - 12 oz.  
Selected Varieties

**3<sup>79</sup>** WITH CARD



### Frito Lay Chips

1.75 - 4.125 oz.  
Selected Varieties

**2/\$5** WITH CARD



### Doritos Tortilla Chips

6 - 10.75 oz.  
Selected Varieties

**2/\$10** WITH CARD



### Chex Mix Muddy Buddies

9 oz.  
Selected Varieties

**2/\$8**

WITH CARD



### Beika Mochi Rice Crackers

2.4 - 6.8 oz.  
Selected Varieties

**5<sup>29</sup>**

WITH CARD



### Aloha Gourmet Da Mini Pounder Snack

1.25 - 7 oz.  
Selected Varieties

**2/5<sup>50</sup>**

WITH CARD



### Hawaiian Tradition Arare Candy

2.3 - 3 oz. or  
2.5 oz.  
Selected Varieties

**4/\$5**

WITH CARD

Sold Exclusively at Longs!



### CVS Alkaline Batteries

\*AA16, AAA16, C8, D8 or 9V4  
\*Max - AA12 or AAA12

**9<sup>99</sup>** WITH CARD



### Hawaii Spirit Insulated Casserole Bag

Selected Varieties

**4<sup>99</sup>**

WITH CARD



### Pacific Breeze Rubber Slippers

Sizes 6.5 - 13  
Selected Varieties

**3<sup>99</sup>**

WITH CARD



### Savory Prime Duck Jerky

16 oz.

**9<sup>99</sup>**

WITH CARD



### Vornado Whole Room Air Circulator

Black or White  
#533

**49<sup>99</sup>**

WITH CARD



### Hawaii Cool Flex Chiller Tote Bag

#30265

Selected Varieties

**8<sup>99</sup>**

WITH CARD



### Reynolds Kitchens Oven Bags

Turkey  
2 count

**2<sup>49</sup>** WITH CARD



Large - 5 count

**2<sup>99</sup>** WITH CARD



### Hartz Pet Products

Selected Varieties

**30% OFF**

WITH CARD



### Vornado Oscillating Tower Circulator

#OSC84

**99<sup>99</sup>**

WITH CARD



### Hawaii Spirit Shopping Tote with Wheels

#132W

**18<sup>99</sup>**

WITH CARD



### Playtex Living Gloves

One pair  
Selected Varieties

**2<sup>99</sup>**

WITH CARD



### Inaba Pet Foods & Treats

Selected Varieties

**25% OFF**

WITH CARD



### Mothers Car Care

Selected Varieties

**25% OFF**

WITH CARD



### Nippon Kodo Joss Sticks

Mainichikoh - #107

**5<sup>99</sup>** WITH CARD

Seiun - #258

**9<sup>99</sup>** WITH CARD



### Air Wick Automatic Spray Refills

Selected Varieties

**5<sup>99</sup>** WITH CARD

Starter Kit

**11<sup>99</sup>** WITH CARD



### Air Wick Essential Mist Lavender & Almond Blossom

**5<sup>99</sup>** WITH CARD

Refill

Starter Kit

**15<sup>99</sup>** WITH CARD



### Twinkle Beads Air Freshener

Selected  
Varieties

**2/\$4** WITH CARD



### Humidity Zapper Moisture Absorber

3 count

**4<sup>99</sup>** WITH CARD



### Spectracide Terminate Termite Killing Foam

16 oz.

**8<sup>99</sup>** WITH CARD



### Hot Shot Fogger with Odor Neutralizer

3 count

**9<sup>99</sup>** WITH CARD



### Air Wick Scented Oil Warmer

**1<sup>99</sup>** WITH CARD

### Scented Essential Oil Refills

Selected Varieties

**5<sup>99</sup>** WITH CARD



### Air Wick Vibrant Essential Oil Starter Kit

**6<sup>99</sup>**

WITH CARD





**Duracell  
Coppertop  
Batteries**  
AA8, AAA8,  
C4, D4 or 9V2

**949**

WITH CARD



**Aloha Fresh  
Slider Bags**

15 - 25 count, Selected Varieties

**169**

WITH CARD



**Tide Simply  
Pods**

Fresh Linen or  
Refreshing Breeze  
13 count

**2/\$7**

WITH CARD



**Liquid Laundry  
Detergent**

Daybreak Fresh or  
Refreshing Breeze

32 oz.

**379**

WITH CARD



**Islander Group  
Black Pots**  
Selected Varieties

**40% OFF**

WITH CARD



**Spring Toys**  
Selected Varieties

**25% OFF**

WITH CARD



**Reynolds Wrap  
Pop-Up Foil Sheets**

50 count

**2/\$5**

WITH CARD



**Reynolds Kitchens  
Slow Cooker Liners**  
4 count

**219**

WITH CARD



**Woolite  
Detergent**  
Darks or  
Gentle Cycle  
50 oz.

**999**

WITH CARD



**Gaviota  
Fertilizer**  
20 lb., Selected Varieties

**2799**

WITH CARD

**Lawn & Garden**  
Selected Varieties  
*Sale items not included*

**20% OFF**

WITH CARD



**Good Cook  
Bakeware &  
Cookware**  
Selected Varieties

**30% OFF**

WITH CARD



**Joy Ultra  
Dishwashing  
Liquid**  
Lemon or Orange  
30 oz.

**419**

WITH CARD



**Arm & Hammer  
Clean Scentsations  
Fabric Sheets**

40  
count

**199**

WITH CARD

**In-Wash Scent Booster**  
Purifying Water or Tropical Paradise

18 oz.

**499**

WITH CARD



**Gaviota  
Lawn Food**  
16-4-4 or  
Sulfate of Ammonia  
21-0-0  
20 lb.

**2399**

WITH CARD



**Kauhale Living  
Poly Microfiber  
Dish Cloths**  
12 in. x 12 in.  
2 count

**249**

WITH CARD

**Poly Microfiber  
Kitchen Towels**  
24 in. x 16 in.  
2 count

**399**

WITH CARD

**Hawaiian  
Dish Drying Mat**  
16 in. x 18 in.

**449**

WITH CARD



**3M Scotch-Brite  
Heavy Duty Scour Pad**

Single  
count

**79¢**

WITH CARD

**Dobie  
Scrubbing Pad**

Single  
count

**129**

WITH CARD



**Charmin  
Mega Roll  
Bathroom  
Tissue**  
4 count

**699**

WITH CARD



**Oxi Clean  
Max Force  
Laundry  
Stain Remover**  
6.2 oz. or 12 oz.

**329**

WITH CARD



**Ellemoi  
Facial  
Tissue**  
5 count

**829**

WITH CARD



**Terro  
Ant Killer Spray**  
One lb.

**469**

WITH CARD

**Liquid Ant Baits**  
6 count

**629**

WITH CARD



**Simple Green  
All-Purpose  
Cleaner**  
Regular or Lemon  
22 oz.

**449**

WITH CARD





**Patron Silver Tequila or Don Julio Blanco Tequila**  
750 ml. **39<sup>99</sup>**

**Jameson Irish Whiskey**  
750 ml. **24<sup>99</sup>**  
Selected Varieties



**\*Grey Goose Vodka or Baileys Irish Cream Liqueur**  
750 ml., Selected Varieties **\*1800 Silver Tequila**  
750 ml. **25<sup>99</sup>**



**Ketel One Vodka**  
750 ml., Selected Varieties **23<sup>99</sup>**

**Jack Daniel's Whiskey or Crown Royal Blended Whisky**  
750 ml., Selected Varieties **22<sup>99</sup>**



**Meiomi Wine**  
750 ml., Selected Varieties **18<sup>99</sup>**

**Decoy Wine**  
Selected Varieties or **Tito's Handmade Vodka**  
750 ml. **17<sup>99</sup>**

**Save 10%**

when you fill this bag with 4 or more 375 ml or larger, bottles of wine and/or spirits priced \$10 or greater.  
Excludes items priced ending in 97c.

**Mix & match!**

Selection, availability and pricing may vary by store and does not include applicable local, county, state or federal taxes. We reserve the right to limit quantities on all items. Regular retail prices quoted may vary in some stores. Clearance items not included. Beverage items are "CRV" where required by law. Alcoholic beverages available only in licensed stores. All beer & wine sold at minimums where state law regulates pricing.

**\*Koloa Kauai Rum - Selected Varieties**  
**\*Johnnie Walker Black Label Blended Scotch Whisky**  
750 ml. **30<sup>99</sup>**

**Bulleit Whiskey**  
Bourbon or Rye - 750 ml. **26<sup>99</sup>**

**\*Cazadores Tequila**  
Blanco or Reposado **\*Ocean Vodka**  
750 ml. **24<sup>99</sup>**

**Kahlua Liqueur**  
Original or Salted Caramel 750 ml. **23<sup>99</sup>**

**\*Daou Paso Robles Cabernet Sauvignon - 750 ml.**  
**\*Maker's Mark Bourbon Whiskey** 750 ml. **22<sup>99</sup>**

**La Crema Sonoma Wine - 750 ml.**  
Pinot Noir Chardonnay **22<sup>99</sup> 16<sup>99</sup>**

**Black Box or Bota Box Wine**  
3 liters, Selected Varieties **19<sup>99</sup>**

**\*Captain Morgan Rum, Malibu Rum or Jim Beam Kentucky Straight Bourbon Whiskey**  
Selected Varieties

**\*La Marca Prosecco - Regular or Rose**  
**\*Jam Cellars Chardonnay, Erath Pinot Noir or Rodney Strong Chalk Hill Chardonnay Wine**  
750 ml. **15<sup>99</sup>**

**Josh Cellars Cabernet Sauvignon or Merlot - 750 ml.** **14<sup>99</sup>**

**Beringer Brothers Wine**  
Red Blend or Cabernet Sauvignon or 750 ml. **14<sup>49</sup>**

**\*Edna Valley Vineyards, Bacardi Puerto Rican Rum or Kim Crawford Marlborough**  
750 ml., Selected Varieties

**\*Evan Williams Kentucky Straight Bourbon Whiskey**  
Regular or Honey Reserve - 750 ml.

**\*Fleischmann's Regular Vodka**  
1.75 liters **13<sup>99</sup>**

**19 Crimes Wine**  
Cali Gold Sparkling 750 ml. **13<sup>99</sup> 8<sup>99</sup>**

**\*Korbel California Champagne**  
Selected Varieties or **Korbel Prosecco**  
**\*Sauza Tequila - Gold or Silver**  
**\*Fireball Cinnamon Whisky or Southern Comfort**  
750 ml. **12<sup>99</sup>**

**\*Captain Morgan's Parrot Bay Rum, Imagery Wine, Risata or Wentz Vineyards Estate Grown**  
750 ml., Selected Varieties

**\*Black Velvet Canadian Whisky, Hess Select Cabernet Sauvignon Wine or 7 Deadly Zins Red Blend**  
750 ml. **11<sup>99</sup>**

**14 Hands Vineyards, Matua or Sterling Vintner's Collection Wine**  
750 ml. **10<sup>99</sup>**

**Folie A Deux Ménage a Trois**  
Bourbon Barrels Cabernet Sauvignon 750 ml. **10<sup>99</sup> 8<sup>99</sup>**

**Bolla Wine - Selected Varieties, Angeline Pinot Noir Wine or Early Times Kentucky Whisky**  
750 ml. **9<sup>99</sup>**

**Bogle Vineyards**  
750 ml., Selected Varieties **8<sup>89</sup>**

**Dark Horse Wine or Smoking Loon California Wine**  
750 ml., Selected Varieties **7<sup>99</sup>**

**Fetzer Wine or Robert Mondavi Private Selection**  
750 ml., Selected Varieties **6<sup>99</sup>**

**Barefoot California Wine, CK Mondavi and Family Wine or Yellow Tail Australia Wine**  
750 ml. **5<sup>99</sup>**

**Sutter Home California Wine**  
750 ml., Selected Varieties **4<sup>99</sup>**



**Jose Cuervo Especial Tequila**  
Gold or Silver 750 ml. **15<sup>99</sup>**

**Francis Coppola Diamond Collection Wine**  
750 ml., Selected Varieties **13<sup>99</sup>**



**\*Smirnoff Vodka or Stella Rosa**  
750 ml. **11<sup>99</sup>**

**\*Kendall-Jackson Avant - Chardonnay, Grand Reserve**  
Low Calorie Chardonnay or Vintner's Reserve Chardonnay or Rose 750 ml.



**New Amsterdam Vodka**  
Selected Varieties 750 ml. **10<sup>99</sup>**

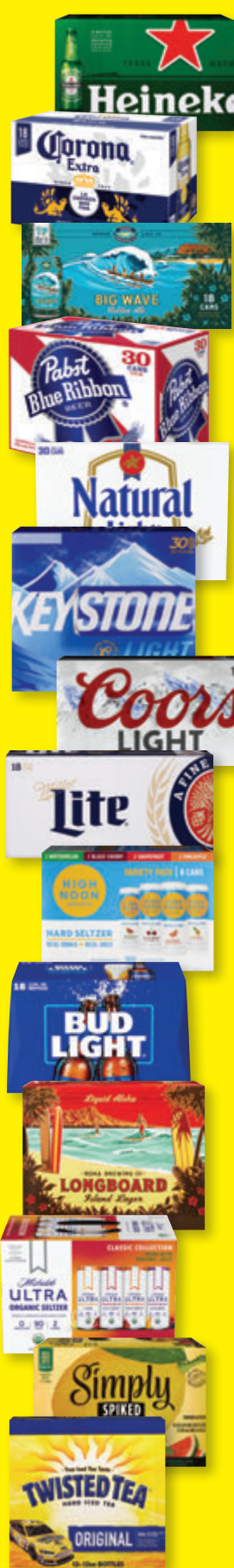
**Murphy Goode Wine**  
Selected Varieties 750 ml. **9<sup>99</sup>**



**Apothic Wine or Clos du Bois North Coast Wine**  
750 ml., Selected Varieties **8<sup>99</sup>**

**Woodbridge by Robert Mondavi**  
750 ml., Selected Varieties **5<sup>99</sup>**





**\*Stella Artois Lager**  
Eighteen 11.2 oz. bottles

**\*Heineken Lager Beer**  
Original or Premium Light  
Eighteen 12 oz. bottles or Original  
Eighteen 12 oz. cans

**\*Corona Extra Beer**  
Eighteen 12 oz. bottles or cans

**\*Modelo Especial Beer**  
Eighteen 12 oz. cans

**\*Kona Brewing**  
Big Wave or Longboard  
Eighteen 12 oz. cans

**\*Pabst Blue Ribbon Beer**  
Thirty 12 oz. cans

**25<sup>99</sup>**

**Natural Beer**  
Ice or Light,  
**Rolling Rock Beer or**  
**Keystone Light Beer**  
Thirty 12 oz. cans

**23<sup>99</sup>**

**Coors Light or**  
**Miller Lite Beer**  
Fifteen 16 oz.  
aluminum bottles or  
Eighteen 12 oz. cans

**22<sup>99</sup>**

**High Noon**  
Eight 355 ml. cans  
Selected Varieties or  
**Budweiser Beer**  
Light - Eighteen 12 oz. bottles or  
Light or Regular  
Eighteen 12 oz. cans

**21<sup>99</sup>**

**\*Kona Brewing**  
Twelve 12 oz. bottles or cans  
Selected Varieties

**\*Michelob Ultra Seltzer**  
Classic or Signature Collection

**\*Nectar Seltzer**  
Variety Pack or Azuiki

**\*Corona Refresca, Simply**  
**Spiked Lemonade or**  
**Vizzy Hard Seltzer**  
Variety Pack

**\*Truly Berry Mix or**  
**Maui Mix Pack**  
**Hard Seltzer**  
Twelve 12 oz. cans

**\*Twisted Original**  
**Hard Iced Tea**  
Twelve 12 oz. bottles or cans

**19<sup>99</sup>**



**\*Truly Hard Seltzer**  
Selected Varieties

**\*The Beast Unleashed, Topo Chico**  
**Hard Seltzer or**  
**Maui Brewing**  
**Variety Pack**  
Twelve 12 oz. cans

**18<sup>99</sup>**

**\*Heritage Collection Beer**  
Twelve 11.2 oz. bottles

**\*Bud Light Seltzer or**  
**White Claw**  
**Hard Seltzer**  
Twelve 12 oz. cans  
Selected Varieties

**\*Beck's**  
**Regular German Beer**  
Twelve 12 oz. bottles

**17<sup>99</sup>**

**\*Steinlager Beer**  
Pure or Regular  
Twelve 11.15 oz. bottles

**\*Stella Artois Lager**  
Twelve 11.2 oz. bottles or cans

**\*Modelo Especial Beer**  
Selected Varieties

**\*Michelob Ultra**  
Regular or Pure Gold  
Twelve 12 oz. bottles or cans

**\*Bud Light Beer**  
Next - Twelve 12 oz. cans,  
Lime or Platinum  
Twelve 12 oz. bottles or cans

**16<sup>99</sup>**

**\*Jack Daniel's Perfect Mix**  
Four 355 ml. cans, Selected Varieties

**\*Cutwater Spirits**  
Four 12 oz. cans, Selected Varieties

**\*Coors Beer**  
•Light - Nine 16 oz. aluminum bottles or  
Twelve 12 oz. bottles  
•Light or Banquet - Twelve 12 oz. cans

**\*Miller Lite Beer**  
Nine 16 oz. aluminum bottles or  
Twelve 12 oz. bottles or cans

**\*Budweiser Beer**  
Light or Regular  
•Twelve 12 oz. bottles or cans  
•Twelve 16 oz. aluminum bottles

**\*O'Doul's Non-Alcoholic Brew**  
Twelve 12 oz. cans

**15<sup>99</sup>**

**\*Sapporo Beer**  
Twelve 12 oz. cans

**\*Crown Royal**  
Four 355 ml. cans  
Selected Varieties

**\*Kirin Ichiban Beer**  
Twelve 12 oz. bottles or cans

**\*Natural Ice Beer**  
Fifteen 12 oz. cans

**13<sup>99</sup>**



**\*Funny Water**  
Classic or Sweet & Spicy  
Twelve 12 oz. cans

**\*Pabst**  
**Blue Ribbon Beer**  
Twelve 12 oz. cans

**\*Keystone Light Beer**  
Fifteen 12 oz. cans

**12<sup>99</sup>**

**\*High Noon**  
Four 355 ml. cans  
Selected Varieties

**\*Maui Brewing**  
Big Swell or Bikini Blonde

**\*Waikiki**  
**Brewing Company**  
Eee Pah IPA or  
Aloha Spirit Blonde Ale  
Six 12 oz. cans

**\*Bud Ice Beer**  
Twelve 12 oz. bottles

**\*Rolling Rock**  
**Extra Pale Beer**  
Twelve 12 oz. cans

**11<sup>99</sup>**

**\*Jack Daniel's**  
**Country Cocktails**  
Six 10 oz. bottles  
Selected Varieties

**\*Ola Hard Seltzer**  
Selected Varieties or  
**Kona Spiked**  
**Tropical Punch**  
**Island Seltzer**  
Six 12 oz. cans

**10<sup>99</sup>**

**\*Smirnoff Ice**  
**Premium Malt Beverage**  
Selected Varieties

**\*Mike's Hard Lemonade**  
Cranberry or Lemonade

**\*Stella Artois Lager**  
Six 11.2 oz. bottles

**\*Maui or White Claw**  
**Hard Seltzer**  
Selected Varieties

**\*Sierra Nevada IPA**  
**Hazy Little Thing**  
Six 12 oz. cans

**9<sup>99</sup>**

**\*Maui Brewing**  
Coconut Porter or IPA  
Four 12 oz. cans

**\*Michelob Ultra Pure Gold**  
Six 12 oz. bottles

**8<sup>99</sup>**

**Soonhari or Jinro Soju**  
375 ml., Selected Varieties

**4<sup>99</sup>**