



"Make Longs a Part of Your Day"

**Sale Sun., 5/18 - Sat., 5/24/25**  
at most BIG ISLAND, KAUAI & MAUI LONGS DRUGS  
Advertised items are available at participating locations

We accept all manufacturers' coupons, subject to manufacturer's restrictions.  
We reserve the right to limit sales to dealers, restaurants or institutions. General Excise Tax additional.  
Seasonal Merchandise is limited to stock on hand. Advertised items are available at participating locations.  
**LONGS 24-HOUR STORES:** Sale effective Sunday (5/18) 12:00 am thru Saturday (5/24) 12:00 midnight.  
Liquor items will be available for purchase from 6:00 am - 11:00 pm.

Find *more* deals on **longs.com**



Follow us on Social Media



@LongsDrugsHI



**Utage  
Premium  
Short Grain Rice**  
15 lb.

**12<sup>99</sup>**

WITH CARD



**May's Hawaii  
Beef Patties**  
32 oz.  
Selected Varieties

**11<sup>99</sup>**

WITH CARD



**Coral  
Chunk Light Tuna**  
in Water or in Vegetable Oil

5 oz.

**99<sup>¢</sup>** WITH CARD

10 pack

**9<sup>79</sup>** WITH CARD



**Lay's  
Chips - 4.75 - 8 oz. or  
Kettle Chips - 8 oz.**  
Selected Varieties

**2/7<sup>50</sup>**

WITH CARD

**Dip**  
15 oz.  
Selected Varieties

**4<sup>99</sup>** WITH CARD



**Campbell's  
Condensed Soup**  
Tomato or Chicken Noodle  
10.75 oz.

**3/\$5**

WITH CARD

Vegetable  
10.5 oz.

**2/\$4**

WITH CARD



**Enjoy  
Assorted Lei**

2.3 - 2.5 oz.  
Selected  
Varieties

**3<sup>99</sup>** WITH CARD

**XD  
Gummy Pineapple Lei**

3.38 oz.

**4<sup>59</sup>** WITH CARD



**Nature Made  
Vitamins & Supplements**  
Selected Varieties

Buy 1, Get 1

**FREE<sup>\*\*</sup>**

WITH CARD



**Revlon &  
Almay  
Cosmetics**  
Selected Varieties

**ExtraBucks®  
Rewards**  
offer limit of 1 per  
household with card.

Buy 1, Get 1

**50% OFF<sup>\*\*</sup>**

WITH CARD

Spend \$25 Get

**\$7**

ExtraBucks® Rewards



**Summer  
Savings**  
Selected Varieties

**25% OFF**

WITH CARD



**Cottonelle  
Mega Roll  
Toilet Paper**  
Ultra Clean or  
Ultra Comfort  
6 count

**7<sup>99</sup>** WITH CARD



**Hawaiian Sun  
Drinks**  
Six 11.5 oz. cans  
Selected Varieties

**2/\$7**

WITH CARD



**Coca-Cola Products**  
Twenty-four 12 oz. cans  
Selected Varieties

**15<sup>99</sup>**

WITH CARD



**High Noon**  
Eight 355 ml. cans

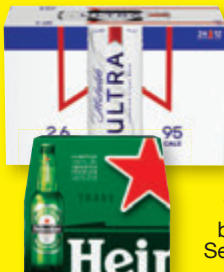
Selected  
Varieties

**21<sup>99</sup>** WITH CARD

**White Claw Hard Seltzer**  
Twelve 12 oz. cans

Selected  
Varieties

**17<sup>99</sup>** WITH CARD



**Michelob Ultra**

Twenty-four  
12 oz. cans

**26<sup>99</sup>**

WITH CARD

**Corona Beer or  
Heineken Lager Beer**

Twelve 12 oz.  
bottles or cans  
Selected Varieties

**16<sup>99</sup>**

WITH CARD



**\*Budweiser Beer**

Light or Regular

**\*Coors Beer**

Light or Banquet

**\*Miller Beer**

Lite or 64

Thirty 12 oz. cans

**28<sup>99</sup>** WITH CARD

**\$5 ExtraBucks®** when you spend \$20 on ANY of the P&G products shown on this page.  
extrabucks® rewards are good for use on your next purchase. Offer limit of 2 per household with card. Other restrictions may apply.



**Crest Toothpaste**  
4.2 oz., Selected Varieties

**10/\$10** WITH CARD



**Crest & Oral-B Gum Care**  
Selected Varieties

Buy 1, Get 1  
**50% OFF\*\*** WITH CARD



**Oral-B Healthy & Clean Toothbrush**  
Single count

**5/\$5** WITH CARD



**Oral-B Vitality Rechargeable Toothbrush**

**21.99** WITH CARD



**Glide Dental Floss**  
43.7 - 54.6 yd.

Selected Varieties  
**2/\$8** WITH CARD  
**Threader Floss**  
30 count **4.99** WITH CARD



**Native Toothpaste**  
with Fluoride or Fluoride Free  
4.1 oz.

**7.99** WITH CARD



**Oral-B Replacement Brush Heads**  
3 count  
Selected Varieties

**20% OFF** WITH CARD



**Scope Mouthwash**  
Classic or Outlast  
One liter

**5.49** WITH CARD



**Crest & Oral-B Pro Health Oral Care**  
Selected Varieties

Buy 1, Get 1  
**50% OFF\*\*** WITH CARD



**Crest 3D White White Strips**  
Selected Varieties

**20% OFF** WITH CARD



**Fixodent Denture Adhesives**  
Selected Varieties

Buy 1, Get 1  
**50% OFF\*\*** WITH CARD



**Alka-Seltzer Digestive & Phillips'**  
Selected Varieties

Buy 1, Get 1  
**50% OFF\*\*** WITH CARD



**Afrin Cold & Allergy Remedies, Alka-Seltzer Plus Cold & Coricidin HBP**  
Selected Varieties

Buy 1, Get 1  
**50% OFF\*\*** WITH CARD



**Benadryl Allergy**  
24 count or Children's - 4 oz.  
Selected Varieties

**7.49** WITH CARD



**\*Allegra 24 Hr.**  
Allergy or Hives  
30 count  
**\*Xyzal Allergy 24 Hr.**  
35 count  
**\*Nasacort Allergy 24 Hr.**  
120 sprays

**19.99** WITH CARD



**Miralax**  
Selected Varieties

Buy 1, Get 1  
**50% OFF\*\*** WITH CARD



**Halls Throat or Cough Drops**  
25 - 30 count  
Selected Varieties

**2/\$6** WITH CARD



**Vicks Vapo Products**  
Selected Varieties

Buy 1, Get 1  
**50% OFF\*\*** WITH CARD



**Boost Nutrition Drinks**  
Selected Varieties

Buy 1, Get 1  
**40% OFF\*\*** WITH CARD



**Nutrex BioAstin Hawaiian Astaxanthin Gummies**  
60 count

**23.99** WITH CARD



**Nutrex BioAstin Hawaiian Astaxanthin**  
4 mg., 60 count or  
**Spirulina**  
500 mg., 200 count

**11.99** WITH CARD



**\*Carefree Pads** - 28 count  
Selected Varieties or  
**Liners** - 93 count  
**\*Stayfree Pads**  
48 count

**2/\$14** WITH CARD  
**Carefree Pads**  
40 count **9.99** WITH CARD



**CVS Health  
Eye & Ear Care**  
Selected Varieties

Buy 1, Get 1

**50% OFF\*\***  
WITH CARD



**CVS Health  
Antacids**  
Selected Varieties

Buy 1, Get 1

**50% OFF\*\***  
WITH CARD



**CVS Health  
Ibuprofen or  
Acetaminophen**  
100 count  
Selected Varieties

**5<sup>99</sup>** WITH CARD



**CVS Health  
Baby Wipes**  
168 - 192 count

Selected Varieties

**5<sup>99</sup>** WITH CARD



**Live Better  
Ultra-Soft  
Diapers**  
21 - 32 count

Selected Varieties

**7<sup>99</sup>** WITH CARD

*Sold Exclusively at Longs!*



**CVS Health  
Foot Care**  
Selected Varieties

Buy 1, Get 1

**50% OFF\*\***  
WITH CARD



**Theraworx,  
Blue-Emu &  
Australian Dream  
External Pain Relief**  
Selected Varieties

**20% OFF**  
WITH CARD



**CVS Health  
Hydrogen Peroxide**  
16 oz.

**99¢** WITH CARD

**70% Rubbing Alcohol**  
16 oz., Selected Varieties

**1<sup>49</sup>** WITH CARD



**CVS Health  
Rollator**  
#792519

**99<sup>99</sup>** WITH CARD



**Medical  
Equipment**  
Selected Varieties  
*Sale items not included*

**20% OFF** WITH CARD



**CVS Health  
Nicotine  
Replacement  
Therapy**  
Selected Varieties


Buy 1, Get 1

**50% OFF\*\*** WITH CARD



**CVS Health  
Cortisone or  
Itch Relief Cream**  
One oz.  
Selected Varieties

**3<sup>99</sup>** WITH CARD



**CVS Health  
\*Antibiotic  
Ointment or Cream  
\*Bacitracin**  
One oz.  
Selected Varieties

**5<sup>99</sup>** WITH CARD



**Conair  
Hairstyling Appliances &  
Lighted Mirrors**  
Selected Varieties

**20% OFF** WITH CARD



**Toppik  
Hair Building  
Fibers**  
Selected Varieties

**1<sup>999</sup>** WITH CARD



**Vanicream**  
Selected Varieties

**25% OFF**  
WITH CARD



**Coppertone &  
Australian Gold  
Suncare**  
Selected Varieties

Buy 1, Get 1

**50% OFF\*\***  
WITH CARD



**One+Other  
Nail Polish  
Removers**  
Selected Varieties

Buy 1, Get 1

**50% OFF\*\***  
WITH CARD

*Sold Exclusively at Longs!*



**Selena Fresh Cotton Puffs**  
110 count

**2/\$4** WITH CARD



**Gillette  
Sensor2 or  
Daisy Classic  
Disposable Razors**  
10 - 12 count  
Selected Varieties

**8<sup>99</sup>** WITH CARD



**One+Other,  
Scunci & Conair  
Hair  
Accessories**  
Selected Varieties  
*One+Other is  
Sold Exclusively at Longs!*

Buy 1, Get 1

**50% OFF\*\***  
WITH CARD



**Whip's  
Bubble Body Towel**  
Selected Varieties

**2/\$5** WITH CARD

**Rich**  
Selected Varieties

**2<sup>99</sup>** WITH CARD



**Salux  
Super Hard  
Wash Cloth**  
Selected Varieties

**3<sup>99</sup>** WITH CARD



**Pop-arazzi &  
One+Other  
Bodycare &  
Bath Accessories**  
Selected Varieties

Buy 1, Get 1

**50% OFF\*\*** WITH CARD

*Sold Exclusively at Longs!*



**Must Buy**  
**3/\$18**

WITH CARD

or **6<sup>99</sup>** WITH CARD  
Each

**Buy 3 Get**  
**\$4**

ExtraBucks® Rewards

## L'Oréal Magic Root Rescue

Selected Varieties

**ExtraBucks® Rewards**  
offer limit of 1 per household with card.



## L'Oréal Cosmetics

Selected Varieties

**ExtraBucks® Rewards**  
offer limit of 1 per household with card.

**Buy 1, Get 1**  
**50% OFF\*\***

WITH CARD

**Spend \$25 Get**

**\$7**

ExtraBucks® Rewards



## L'Oréal Skincare & Suncare

Selected Varieties

**ExtraBucks® Rewards**  
offer limit of 1 per household with card.

**25% OFF**

WITH CARD

**Spend \$20 Get**

**\$3**

ExtraBucks® Rewards



## Aveeno Haircare, Skincare & Suncare

Selected Varieties

**ExtraBucks® Rewards**  
offer limit of 1 per household with card.

**Buy 1, Get 1**  
**50% OFF\*\***

WITH CARD

**Spend \$15 Get**

**\$3**

ExtraBucks® Rewards



## L'Oréal Superior Preference Haircolor

Selected Varieties

**ExtraBucks® Rewards**  
offer limit of 1 per household with card.

**11<sup>99</sup>**

WITH CARD

**Buy 2 Get**

**\$2**

ExtraBucks® Rewards



## Kokie Cosmetics

Selected Varieties

**30% OFF**

WITH CARD



## Nivea, Eucerin & Aquaphor Skincare

Selected Varieties

**Buy 1, Get 1**

**50% OFF\*\***

WITH CARD



## Axe Deodorants, Shower Gels & Haircare

Selected Varieties

**Buy 1, Get 1**

**50% OFF\*\***

WITH CARD



## Revlon Colorsilk Haircolor

Selected Varieties

**ExtraBucks® Rewards**  
offer limit of 1 per household with card.

**2/\$11**

WITH CARD

**Buy 4 Get**

**\$3**

ExtraBucks® Rewards



## Kiss Nail, Lashes & Accessories

Selected Varieties

**Buy 1, Get 1**

**50% OFF\*\***

WITH CARD



## Dial Soap

8 count  
Selected Varieties

**6<sup>99</sup>**

WITH CARD



## Dove & Degree Dry Sprays

Selected Varieties

**Buy 1, Get 1**

**50% OFF\*\***

WITH CARD



## L'Oréal Elvive & Ever Haircare & Advanced Hairstyling

Selected Varieties

**ExtraBucks® Rewards**  
offer limit of 1 per household with card.

**Buy 1, Get 1**

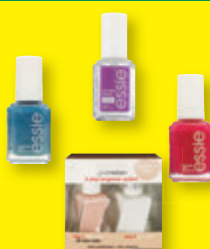
**50% OFF\*\***

WITH CARD

**Spend \$15 Get**

**\$3**

ExtraBucks® Rewards



## Essie Nail Color

Selected Varieties

**Buy 2 Get**

**\$3**

ExtraBucks® Rewards

**ExtraBucks® Rewards**  
offer limit of 1 per household with card.



## Softsoap Hand Soap

11.25 oz.  
Selected Varieties

**Must Buy**  
**3/\$8**

WITH CARD

or **2<sup>99</sup>** WITH CARD  
Each



## Irish Spring Body Wash

20 oz.  
Selected Varieties

**5<sup>79</sup>**

WITH CARD



## Aussie Haircare

Selected Varieties

**Buy 1, Get 1**

**50% OFF\*\***

WITH CARD



## Tweezerman Beauty Tools

Selected Varieties

**Buy 1, Get 1**

**50% OFF\*\***

WITH CARD



## Epielle Facial Skincare

Selected Varieties

**2/\$4**

WITH CARD



## Softsoap Body Wash

20 oz.  
Selected Varieties

**5<sup>99</sup>**

WITH CARD



**Cape Cod Potato Chips**  
7.5 - 8 oz.  
Selected Varieties

**2/\$7**  
WITH CARD



**Hawaiian Hurricane Company Popcorn**  
4 - 6 oz.  
Selected Varieties

**4.99** WITH CARD



**Yamaei Noriten Snack**  
2.46 - 2.82 oz.  
Selected Varieties

**3.99** WITH CARD



**Hinodeya Rice Crackers**  
3.6 oz.  
Selected Varieties

**4.99** WITH CARD



**Hot-Kid or Want-Want Shelly Senbei**  
5.3 - 5.64 oz.  
Selected Varieties

**2/\$6**  
WITH CARD



**Lay's Stax**  
5.5 - 5.75 oz.  
Selected Varieties

**2/\$5**  
WITH CARD



**Krackcorn**  
with Cheese  
3.25 oz. or  
Regular - 4 oz.

**3.79** WITH CARD



**Just The Fun Part Bite-Sized Waffle Cones**  
4.23 oz.  
Selected Varieties

**4.99** WITH CARD



**David Sunflower Seeds**  
5.25 oz.  
Selected Varieties or  
Pumpkin Seeds

2.25 oz.

**1.59** WITH CARD




**Oberto Thin Style Beef Jerky**  
Original or Peppered  
7 oz. or

**Cocktail Pep Smoked Sausages**  
12 oz.

**13.99** WITH CARD




**Combos Stuffed Snacks**  
6.3 oz.  
Selected Varieties

**2.79**  
WITH CARD



**Cheez-It Crackers, Grooves or Snack Mix**  
9 - 12.4 oz.  
Selected Varieties

**5.49** WITH CARD



**Epic Pork Rinds**  
2.5 oz.  
Selected Varieties

**2/\$6**  
WITH CARD

## Summertime Fun



**Swim & Dive Products & Summer Beach Toys**  
Selected Varieties

**25% OFF**  
WITH CARD



**Spring Toys**  
Selected Varieties

**25% OFF**  
WITH CARD



**Sun & Sky Kid's Camp Chair**  
Hippo or Lady Bug

**13.99**  
WITH CARD



**Sun & Sky Standard Camp Chair**  
Selected Varieties

**14.99**  
WITH CARD



**Multi-Purpose Refillable Butane Lighter**

**1.09** WITH CARD



**Sun Butane Gas Cartridge**  
#SUN-01  
7.8 oz.

**2/\$4** WITH CARD



**Summer Footwear**  
Selected Varieties

**25% OFF**  
WITH CARD



**Igloo Wheelie Cool Cooler**  
38 qt. capacity

**38.99** WITH CARD



**Sun & Sky Deluxe Camp Chair**  
Selected Varieties

**16.99**  
WITH CARD



**U Cook Premium Portable Butane Gas Stove**

**22.99**  
WITH CARD



**Kila Kiawe Charcoal**  
10 lb. box

**13.99** WITH CARD



**Kingsford Charcoal**  
Original or Match Light  
8 lb.

**8.99** WITH CARD

Original - 16 lb.

**11.99** WITH CARD

 <b>Twizzler or Jolly Rancher Gummies</b> 6.5 - 7 oz. Selected Varieties <b>2/\$5</b> WITH CARD  <b>Hershey's Candy</b> 28.87 - 35.9 oz. party pack Selected Varieties <b>15.99</b> WITH CARD	 <b>Hawaiian Host Maui Caramacs</b> 6 oz. 6 pack <b>6.99</b> WITH CARD <b>3.99</b> WITH CARD	 <b>Nabisco Wheat Thins</b> 8 - 8.5 oz. Selected Varieties or <b>Chicken In A Biskit</b> Original or Ranch - 7.5 oz. <b>2/\$7</b> WITH CARD  <b>Tate's Bake Shop Cookies</b> 7 oz. Selected Varieties <b>2/\$9</b> WITH CARD	 <b>Diamond Bakery Graham Crackers</b> 8.4 oz., Selected Varieties or <b>Lightly Salted Tops Soda Crackers</b> - 8.5 oz. <b>2/\$7</b> WITH CARD <b>Grab-N-Go</b> 24 count value pack Selected Varieties <b>7.99</b> WITH CARD	 <b>Lion Coffee Instant Coffee</b> Original Roast or Vanilla Macadamia 8 count <b>3.99</b> WITH CARD  <b>Hawaiian Isles Coffee Roasters Co. Coffee</b> 8 oz. Selected Varieties <b>8.99</b> WITH CARD <i>Select items contain 90% foreign-grown coffee</i>	 <b>Tulip Luncheon Meat</b> Classic or 25% Less Sodium 12 oz. <b>2/\$4</b> WITH CARD	 <b>Brunswick Sardines</b> in Soybean Oil 3.75 oz. <b>4/\$5</b> WITH CARD  <b>Sardine Fillets</b> 3.75 oz. Selected Varieties <b>2/\$3</b> WITH CARD	 <b>Progresso Broth</b> 32 oz. Selected Varieties <b>2/\$3</b> WITH CARD  <b>Soup</b> 18.5 - 19 oz. Selected Varieties <b>3.99</b> WITH CARD
 <b>Hershey's Candy</b> 2.2 - 5 oz. king size Selected Varieties <b>2/\$4</b> WITH CARD  <b>Ice Breakers Ice Cubes Gum</b> 40 count, Selected Varieties <b>4.39</b> WITH CARD	 <b>Island Harvest Organic Macadamia Nuts</b> 8 - 9 oz. Selected Varieties <b>12.99</b> WITH CARD	 <b>Punalu'u Shortbread Cookies</b> 6 oz. Selected Varieties <b>5.49</b> WITH CARD	 <b>Bimbo Bread</b> White or Wheat 1 lb. 4 oz. family size <b>6.29</b> WITH CARD	 <b>Folgers Instant Coffee Crystals</b> Classic Roast or Classic Decaf 8 oz. <b>6.99</b> WITH CARD	 <b>Celebrity Ham</b> 12 oz. <b>4.39</b> WITH CARD	 <b>California Girl Sardines</b> in Tomato Sauce Regular or Spicy 15 oz. <b>1.99</b> WITH CARD	 <b>Nissin Cup Noodles</b> 2.25 oz. Selected Varieties <b>99¢</b> WITH CARD
 <b>Wrigley Life Savers or Skittles</b> 2.75 - 7.2 oz. peg bag Selected Varieties <b>2/\$5</b> WITH CARD	 <b>La Cocina De Josefina Tortilla Chips</b> 12 oz. <b>3.99</b> WITH CARD  <b>Ruffles Potato Chips</b> 5.5 - 8.5 oz. Selected Varieties <b>4.99</b> WITH CARD	 <b>Loacker Sandwich Wafers</b> 2.65 oz. bar, Selected Varieties <b>3/\$4</b> WITH CARD	 <b>Philadelphia Cream Cheese Spread</b> 7.5 - 8 oz. Selected Varieties <b>3.99</b> WITH CARD  <b>Bubba's Sliced Bagels</b> 6 count Selected Varieties <b>5.49</b> WITH CARD	 <b>Kellogg's Special K Cereal</b> 9.6 - 13 oz. Selected Varieties <b>3.99</b> WITH CARD	 <b>Van Camp's Pork &amp; Beans or Dark Red Kidney Beans</b> 15 oz. <b>4/\$5</b> WITH CARD	 <b>Shirakiku Kogai-Ajitsuke Seasoned Baby Clams</b> 5.99 oz. <b>3.99</b> WITH CARD	 <b>Koda Farms Mochiko Flour</b> 16 oz. <b>2.79</b> WITH CARD  <b>House Foods Vermont Curry Mix</b> 4.05 oz., Selected Varieties <b>2/\$6</b> WITH CARD
 <b>Enjoy Candy</b> 2.5 - 3 oz. Selected Varieties <b>1.89</b> WITH CARD	 <b>Enjoy Iso Peanuts</b> 6 - 7 oz. Selected Varieties <b>2/\$7</b> WITH CARD	 <b>Voortman Wafers</b> 9 - 10.6 oz., Selected Varieties <b>2/\$9</b> WITH CARD	 <b>Hawaiian Sun Coconut Milk</b> 13.5 oz. <b>2/\$4</b> WITH CARD  <b>Pancake Mix</b> 6 oz., Selected Varieties <b>2/\$7</b> WITH CARD	 <b>Cap'n Crunch Cereal</b> 10.3 - 12.6 oz. Selected Varieties <b>4.99</b> WITH CARD	 <b>Lunchables</b> 1.3 - 1.9 oz., Selected Varieties <b>4/\$5</b> WITH CARD  <b>Ore-Ida Bagel Bites</b> Three Cheese or Cheese & Pepperoni 7 oz. <b>2/\$4</b> WITH CARD	 <b>Angelo Pietro Dressing</b> 9.3 oz. Selected Varieties <b>5.99</b> WITH CARD	 <b>Carrots</b> One lb. <b>1.49</b> WITH CARD  <b>Celery</b> One sleeve <b>2.19</b> WITH CARD
 <b>Aloha Gourmet Li Hing Prune Mui with Apricot</b> 16 oz. <b>4.99</b> WITH CARD  <b>Mango Slices</b> Sweet or Li Hing 14 oz. <b>5.99</b> WITH CARD	 <b>Hawaii Candy Coconut Balls</b> 4 oz., Selected Varieties <b>3.99</b> WITH CARD  <b>Hawaii Candy Senbei Cookies</b> 6 oz. Selected Varieties <b>6.49</b> WITH CARD	 <b>Hawaii Candy Senbei Cookies</b> 3 oz. Selected Varieties <b>3.59</b> WITH CARD	 <b>Betty Crocker Baking Mix</b> 6.4 - 10.25 oz. pouch Selected Varieties <b>5/\$5</b> WITH CARD  <b>Bisquick</b> 5.5 - 7.75 oz. pouch Selected Varieties <b>4/\$5</b> WITH CARD	 <b>Dole Pineapple in Heavy Syrup</b> 8.25 oz. Selected Varieties <b>2/\$3</b> WITH CARD  <b>Dole Fruit Cups in Juice or Gel</b> 4 count Selected Varieties <b>3.99</b> WITH CARD	 <b>Totino's Pizza Rolls</b> 24.46 - 24.8 oz. Selected Varieties <b>4.99</b> WITH CARD	 <b>Kraft Stove Top Stuffing</b> Turkey or Chicken 6 oz. <b>2/\$5</b> WITH CARD  <b>Original Shake 'N Bake</b> Chicken 4.5 oz. or Pork - 5 oz. <b>2/\$6</b> WITH CARD	 <b>Sweet Onions</b> 2 lb. or <b>Potatoes</b> 5 lb. <b>3.99</b> WITH CARD



**AquaFina Purified Water**  
Twenty-four 16.9 oz. bottles

**849** WITH CARD



**Pepsi Products**  
Twelve 12 oz. cans  
Selected Varieties

**649** WITH CARD



**Monster Energy Drink**  
16 oz.  
Selected Varieties

**3/\$7**

WITH CARD



**Gatorade Thirst Quencher**  
28 oz.  
Selected Varieties

**2/\$4**

WITH CARD



**Reign Energy Drink**  
16 oz.  
Selected Varieties

**3/6<sup>50</sup>**

WITH CARD



**Coca-Cola Products**  
Twelve 12 oz. cans  
Selected Varieties

**929** WITH CARD



**Glaceau Vitamin Water**  
20 oz.  
Selected Varieties

**2/4<sup>50</sup>**

WITH CARD



**Reign Storm Energy Drink**  
12 oz.  
Selected Varieties

**2/\$5**

WITH CARD



**Lion Cold Brew Coffee**  
11 oz.  
Selected Varieties

**2/\$4**

WITH CARD



**Powerade Sport Drinks**  
Eight 20 oz. bottles  
Selected Varieties

**799**

WITH CARD



**Bang Energy Drink**  
16 oz.  
Selected Varieties

**3/6<sup>50</sup>**

WITH CARD

## Picnic Needs



**Lindsay Olives**  
Sliced  
Dr. wt. 2.25 oz. or  
Chopped  
Dr. wt. 4.25 oz.

**3/\$5** WITH CARD

Large Pitted  
Dr. wt. 6 oz. **199** WITH CARD



**Best Foods Mayonnaise**  
20 oz., Selected Varieties

**699** WITH CARD

**Real Mayonnaise**  
48 oz. **949** WITH CARD



**Love's Hamburger Buns or Hot Dog Rolls**  
8 count

**439**

WITH CARD



**Farmer John Wieners**  
8 count

**2/\$4** WITH CARD



**Mezzetta Peppers**  
16 oz.  
Selected Varieties

**2/\$6**

WITH CARD



**Heinz Tomato Ketchup**  
20 oz.

**2/5<sup>50</sup>**

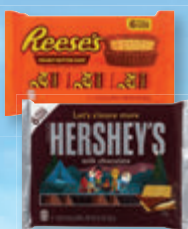
WITH CARD



**Claussen Pickles or Sauerkraut**  
24 - 32 oz.  
Selected Varieties

**399** WITH CARD

Found in the Fridge



**Hershey's Milk Chocolate or Reese's Peanut Butter Cups**  
6 pack

**699** WITH CARD



**Heinz Sweet Relish**  
12.7 oz. or  
**Yellow Mustard**  
20 oz.

**2/5<sup>50</sup>** WITH CARD



**Hidden Valley Ranch Dips or Seasoning Mix** - One oz. **2/\$4** WITH CARD

**The Original Ranch Topping & Dressing**  
Original or Buttermilk  
16 oz. **479** WITH CARD



**Noh Seasoning or Ice Tea Mix**  
2.5 - 3 lb.  
Selected Varieties

**1899**

WITH CARD



## CVS Alkaline Batteries

\*AA8, AAA8,  
C4, D4 or 9V2  
\*Max - AA6 or AAA6

# 6<sup>99</sup>

WITH CARD



## 3M Duct Tape Multi Use

1.88 in. x 30 yds.

# 3<sup>99</sup>

WITH CARD

Pro Strength  
1.88 in. x 60 yds.

# 7<sup>99</sup>

WITH CARD



## American Bag Premium Thermal Bag

15 in. x 12 in.

# 2/\$5

WITH CARD

20 in. x 20 in.

# 4<sup>29</sup>

WITH CARD



## Libman Freedom Spray Mop & Refill

# 30% OFF

WITH CARD



## Flora-Dec Graduation Selected Varieties

# 25% OFF

WITH CARD



## In Harmony Melamine Saimin Spoon

# 79¢

WITH CARD

Ladle or  
Rice Paddle

# 1<sup>29</sup>

WITH CARD



## Kauhale Living Hawaiian Large Tote Bag

# 8<sup>99</sup>

WITH CARD



## 2000 Flushes Automatic Toilet Bowl Cleaner

1.25 oz. or 3.5 oz.  
Selected Varieties

# 2/\$7

WITH CARD



## Island Heritage Lei Kit

Selected Varieties

# 2/\$8

WITH CARD



## In Harmony Melamine 5 in. Bowl

# 1<sup>19</sup>

WITH CARD

6 in. Bowl

# 1<sup>79</sup>

WITH CARD



## Kauhale Living Hawaiian Beach & Shopping Bag or Basket Tote Bag

# 16<sup>99</sup>

WITH CARD



## Pic Mosquito Coils Citronella - 10 count

# 4/\$5

WITH CARD

10 count

# 1<sup>99</sup>

WITH CARD



## Max Imports Na Lei Lihilihi Braided Ribbon Lei

Selected  
Varieties

# 4<sup>49</sup>

WITH CARD

Alii/Nani  
Combo Lei

Selected  
Varieties

# 10<sup>99</sup>

WITH CARD



## In Harmony Melamine 7 in. Bowl, 10 in. Plate or Platter

# 2<sup>49</sup>

WITH CARD



## Kauhale Living Hawaiian Picnic Beach Mat

56 in. x 70 in.

# 19<sup>99</sup>

WITH CARD



## Combat Roach Killing Bait

Large - 8 count or  
Small - 12 count

# 6<sup>99</sup>

WITH CARD



## Max Imports Maile Style Braid Ribbon Lei

Selected Varieties

# 11<sup>99</sup>

WITH CARD



## In Harmony Melamine 8 in. Bowl

# 2<sup>99</sup>

WITH CARD

9 in. Bowl

# 3<sup>99</sup>

WITH CARD



## WD-40 Multi-Use Product

8 oz.

# 6<sup>99</sup>

WITH CARD



## Wiper Zoro Zoro Cockroach Traps

6 count

# 2<sup>99</sup>

WITH CARD



## Duracell Coppertop Batteries

AA16 or AAA16

**15<sup>99</sup>** WITH CARD  
**16<sup>99</sup>** WITH CARD

C8, D8 or 9V4

## Island Accents Wooden Chopsticks

30 count **2/\$1** WITH CARD

## Bamboo Chopsticks

30 count **5/\$5** WITH CARD

## Forks or Spoons

24 count **4/\$5** WITH CARD



## World Centric 6 in. Plates

20 count

**2/\$5** WITH CARD

## Bowls

11.5 oz. capacity or

## 9 in. Plates

20 count

**4<sup>29</sup>** WITH CARD



## Ziploc 2 Gallon Bags

Freezer - 10 count or

Storage - 12 count

**5<sup>99</sup>** WITH CARD



## Duracell Specialty Batteries

Selected Varieties

Buy 1, Get 1

**50% OFF\*\***  
WITH CARD



## Bounty Napkins

200 count

**3<sup>49</sup>**

WITH CARD



## World Centric Cups

Selected Varieties

**30% OFF**

WITH CARD



## Tide Liquid Laundry Detergent

84 oz.  
Selected Varieties

**14<sup>99</sup>**

WITH CARD



## 3M Mailing Supplies

Selected Varieties

Buy 1, Get 1

**50% OFF\*\***

WITH CARD



## Bounty Select-A-Size Double Roll Paper Towels

2 count

**6<sup>29</sup>**

WITH CARD



## Kleenex Facial Tissue

72 count

**5/\$5**

WITH CARD



## Tide Power Pods

25 count

Selected Varieties

**12<sup>99</sup>**

WITH CARD



## Vornado Compact Air Circulator

#133

**29<sup>99</sup>**

WITH CARD



## Lasko 20 in. Box Fan

**25<sup>99</sup>**

WITH CARD



## Dawn Dishwashing Liquid

14.6 - 18 oz.  
Selected Varieties

**2/\$7**

WITH CARD



## Arm & Hammer Liquid Laundry Detergent

Fresh Burst  
138 oz. or  
Clean Burst  
140 oz.

**15<sup>99</sup>**

WITH CARD



## House To Home 16 in. Oscillating Pedestal Fan

Black or White

**22<sup>99</sup>**

WITH CARD



## House To Home 12 in. Oscillating Table Fan

**18<sup>99</sup>**

WITH CARD



## Netted Sponges

5 pack

**1<sup>59</sup>**

WITH CARD



## Renuzit Gel Air Freshener

7 oz.

Selected Varieties

**1<sup>79</sup>**

WITH CARD



**Patron Silver Tequila or Don Julio Blanco Tequila**  
750 ml. **39<sup>99</sup>**

**Jameson Irish Whiskey**  
750 ml. **24<sup>99</sup>**  
Selected Varieties



**\*Grey Goose Vodka or Baileys Irish Cream Liqueur**  
750 ml., Selected Varieties **\*1800 Silver Tequila**  
750 ml. **25<sup>99</sup>**



**Ketel One Vodka**  
750 ml., Selected Varieties **23<sup>99</sup>**

**Jack Daniel's Whiskey or Crown Royal Blended Whisky**  
750 ml., Selected Varieties **22<sup>99</sup>**



**Meiomi Wine**  
750 ml., Selected Varieties **18<sup>99</sup>**

**Decoy Wine**  
Selected Varieties or **Tito's Handmade Vodka**  
750 ml. **17<sup>99</sup>**

**Save 10%**

when you fill this bag with 4 or more 375 ml or larger, bottles of wine and/or spirits priced \$10 or greater.  
Excludes items priced ending in 97c.

**Mix & match!**

Selection, availability and pricing may vary by store and does not include applicable local, county, state or federal taxes. We reserve the right to limit quantities on all items. Regular retail prices quoted may vary in some stores. Clearance items not included. Beverage items are "CRV" where required by law. Alcoholic beverages available only in licensed stores. All beer & wine sold at minimums where state law regulates pricing.

**\*Koloa Kauai Rum - Selected Varieties**  
**\*Johnnie Walker Black Label Blended Scotch Whisky**  
750 ml. **30<sup>99</sup>**

**Bulleit Whiskey**  
Bourbon or Rye - 750 ml. **26<sup>99</sup>**

**\*Cazadores Tequila**  
Blanco or Reposado **\*Ocean Vodka**  
750 ml. **24<sup>99</sup>**

**Kahlua Liqueur**  
Original or Salted Caramel 750 ml. **23<sup>99</sup>**

**\*Daou Paso Robles Cabernet Sauvignon - 750 ml.**  
**\*Maker's Mark Bourbon Whiskey** 750 ml. **22<sup>99</sup>**

**La Crema Sonoma Wine - 750 ml.**  
Pinot Noir Chardonnay **22<sup>99</sup> 16<sup>99</sup>**

**Black Box or Bota Box Wine**  
3 liters, Selected Varieties **19<sup>99</sup>**

**\*Captain Morgan Rum, Malibu Rum or Jim Beam Kentucky Straight Bourbon Whiskey**  
Selected Varieties

**\*La Marca Prosecco - Regular or Rose**  
**\*Jam Cellars Chardonnay, Erath Pinot Noir or Rodney Strong Chalk Hill Chardonnay Wine**  
750 ml. **15<sup>99</sup>**

**Josh Cellars Cabernet Sauvignon or Merlot - 750 ml.** **14<sup>99</sup>**

**Beringer Brothers Wine**  
Red Blend or Cabernet Sauvignon or 750 ml. **14<sup>49</sup>**

**\*Edna Valley Vineyards, Bacardi Puerto Rican Rum or Kim Crawford Marlborough**  
750 ml., Selected Varieties

**\*Evan Williams Kentucky Straight Bourbon Whiskey**  
Regular or Honey Reserve - 750 ml.

**\*Fleischmann's Regular Vodka**  
1.75 liters **13<sup>99</sup>**

**19 Crimes Wine**  
Cali Gold Sparkling 750 ml. **13<sup>99</sup> 8<sup>99</sup>**

**\*Korbel California Champagne**  
Selected Varieties or **Korbel Prosecco**  
**\*Sauza Tequila - Gold or Silver**  
**\*Fireball Cinnamon Whisky or Southern Comfort**  
750 ml. **12<sup>99</sup>**

**\*Captain Morgan's Parrot Bay Rum, Imagery Wine, Risata or Wentle Vineyards Estate Grown**  
750 ml., Selected Varieties

**\*Black Velvet Canadian Whisky, Hess Select Cabernet Sauvignon Wine or 7 Deadly Zins Red Blend**  
750 ml. **11<sup>99</sup>**

**14 Hands Vineyards, Matua or Sterling Vintner's Collection Wine**  
750 ml. Selected Varieties **10<sup>99</sup>**

**Folie A Deux Ménage a Trois**  
Bourbon Barrels Cabernet Sauvignon 750 ml. **10<sup>99</sup> 8<sup>99</sup>**

**Bolla Wine - Selected Varieties, Angeline Pinot Noir Wine or Early Times Kentucky Whisky**  
750 ml. **9<sup>99</sup>**

**Bogle Vineyards**  
750 ml., Selected Varieties **8<sup>89</sup>**

**Dark Horse Wine or Smoking Loon California Wine**  
750 ml., Selected Varieties **7<sup>99</sup>**

**Fetzer Wine or Robert Mondavi Private Selection**  
750 ml., Selected Varieties **6<sup>99</sup>**

**Barefoot California Wine, CK Mondavi and Family Wine or Yellow Tail Australia Wine**  
750 ml. Selected Varieties **5<sup>99</sup>**

**Sutter Home California Wine**  
750 ml., Selected Varieties **4<sup>99</sup>**



**Jose Cuervo Especial Tequila**  
Gold or Silver 750 ml. **15<sup>99</sup>**

**Francis Coppola Diamond Collection Wine**  
750 ml., Selected Varieties **13<sup>99</sup>**



**\*Smirnoff Vodka or Stella Rosa**  
750 ml. Selected Varieties

**\*Kendall-Jackson Avant - Chardonnay, Grand Reserve**  
Low Calorie Chardonnay or Vintner's Reserve Chardonnay or Rose 750 ml. **11<sup>99</sup>**



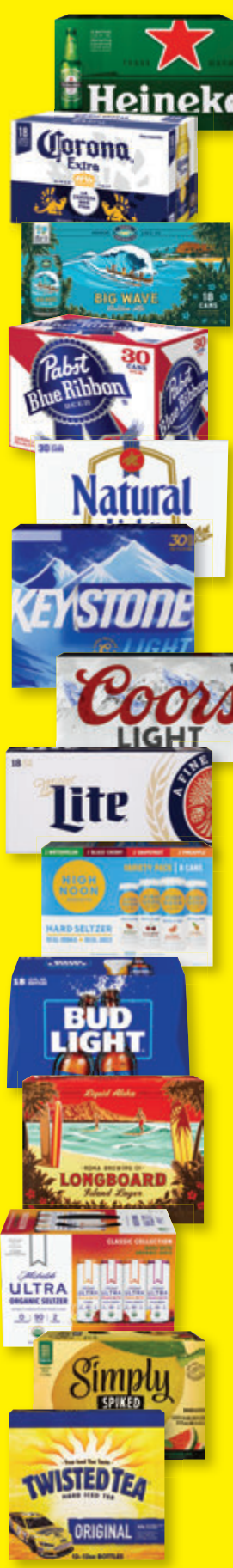
**New Amsterdam Vodka**  
Selected Varieties 750 ml. **10<sup>99</sup>**

**Murphy Goode Wine**  
Selected Varieties 750 ml. **9<sup>99</sup>**



**Apothic Wine or Clos du Bois North Coast Wine**  
750 ml., Selected Varieties **8<sup>99</sup>**

**Woodbridge by Robert Mondavi**  
750 ml., Selected Varieties **5<sup>99</sup>**



**\*Stella Artois Lager**  
Eighteen 11.2 oz. bottles

**\*Heineken Lager Beer**  
Original or Premium Light  
Eighteen 12 oz. bottles or Original  
Eighteen 12 oz. cans

**\*Corona Extra Beer**  
Eighteen 12 oz. bottles or cans

**\*Modelo Especial Beer**  
Eighteen 12 oz. cans

**\*Kona Brewing**  
Big Wave or Longboard  
Eighteen 12 oz. cans

**\*Pabst Blue Ribbon Beer**  
Thirty 12 oz. cans

**25<sup>99</sup>**

**Natural Beer**  
Ice or Light,  
**Rolling Rock Beer or Keystone Light Beer**  
Thirty 12 oz. cans

**23<sup>99</sup>**

**Coors Light or Miller Lite Beer**  
Fifteen 16 oz. aluminum bottles or Eighteen 12 oz. cans

**22<sup>99</sup>**

**High Noon**  
Eight 355 ml. cans  
Selected Varieties or  
**Budweiser Beer**  
Light - Eighteen 12 oz. bottles or  
Light or Regular  
Eighteen 12 oz. cans

**21<sup>99</sup>**

**\*Kona Brewing**  
Twelve 12 oz. bottles or cans  
Selected Varieties

**\*Michelob Ultra Seltzer**  
Classic or Signature Collection

**\*Nectar Seltzer**  
Variety Pack or Azuiki

**\*Corona Refresca, Simply Spiked Lemonade or Vizzy Hard Seltzer Variety Pack**

**\*Truly Berry Mix or Maui Mix Pack Hard Seltzer**  
Twelve 12 oz. cans

**\*Twisted Original Hard Iced Tea**  
Twelve 12 oz. bottles or cans

**19<sup>99</sup>**



**\*Truly Hard Seltzer**  
Selected Varieties

**\*The Beast Unleashed, Topo Chico Hard Seltzer or Maui Brewing Variety Pack**  
Twelve 12 oz. cans

**18<sup>99</sup>**

**\*Heritage Collection Beer**  
Twelve 11.2 oz. bottles

**\*Bud Light Seltzer or White Claw Hard Seltzer**  
Twelve 12 oz. cans  
Selected Varieties

**\*Beck's Regular German Beer**  
Twelve 12 oz. bottles

**17<sup>99</sup>**

**\*Steinlager Beer**  
Pure or Regular  
Twelve 11.5 oz. bottles

**\*Stella Artois Lager**  
Twelve 11.2 oz. bottles or cans

**\*Modelo Especial Beer**  
Selected Varieties

**\*Michelob Ultra**  
Regular or Pure Gold  
Twelve 12 oz. bottles or cans

**\*Bud Light Beer**  
Next - Twelve 12 oz. cans,  
Lime or Platinum  
Twelve 12 oz. bottles or cans

**16<sup>99</sup>**

**\*Jack Daniel's Perfect Mix**  
Four 355 ml. cans, Selected Varieties

**\*Cutwater Spirits**  
Four 12 oz. cans, Selected Varieties

**\*Coors Beer**  
•Light - Nine 16 oz. aluminum bottles or  
Twelve 12 oz. bottles  
•Light or Banquet - Twelve 12 oz. cans

**\*Miller Lite Beer**  
Nine 16 oz. aluminum bottles or  
Twelve 12 oz. bottles or cans

**\*Budweiser Beer**  
Light or Regular  
•Twelve 12 oz. bottles or cans  
•Twelve 16 oz. aluminum bottles

**\*O'Doul's Non-Alcoholic Brew**  
Twelve 12 oz. cans

**\*Sapporo Beer**  
Twelve 12 oz. cans

**15<sup>99</sup>**

**\*Crown Royal**  
Four 355 ml. cans  
Selected Varieties

**\*Kirin Ichiban Beer**  
Twelve 12 oz. bottles or cans

**\*Natural Ice Beer**  
Fifteen 12 oz. cans

**13<sup>99</sup>**



**\*Funny Water**  
Classic or Sweet & Spicy  
Twelve 12 oz. cans

**\*Pabst Blue Ribbon Beer**  
Twelve 12 oz. cans

**\*Keystone Light Beer**  
Fifteen 12 oz. cans

**12<sup>99</sup>**

**\*High Noon**  
Four 355 ml. cans  
Selected Varieties

**\*Maui Brewing**  
Big Swell or Bikini Blonde

**\*Waikiki Brewing Company**  
Eee Pah IPA or Aloha Spirit Blonde Ale  
Six 12 oz. cans

**\*Bud Ice Beer**  
Twelve 12 oz. bottles

**\*Rolling Rock Extra Pale Beer**  
Twelve 12 oz. cans

**11<sup>99</sup>**

**\*Jack Daniel's Country Cocktails**  
Six 10 oz. bottles  
Selected Varieties

**\*Ola Hard Seltzer**  
Selected Varieties or  
**Kona Spiked Tropical Punch Island Seltzer**  
Six 12 oz. cans

**10<sup>99</sup>**

**\*Smirnoff Ice Premium Malt Beverage**  
Selected Varieties

**\*Mike's Hard Lemonade**  
Cranberry or Lemonade

**\*Stella Artois Lager**  
Six 11.2 oz. bottles

**\*Maui or White Claw Hard Seltzer**  
Selected Varieties

**\*Sierra Nevada IPA Hazy Little Thing**  
Six 12 oz. cans

**9<sup>99</sup>**

**\*Maui Brewing**  
Coconut Porter or IPA  
Four 12 oz. cans

**\*Michelob Ultra Pure Gold**  
Six 12 oz. bottles

**8<sup>99</sup>**

**Soonhari or Jinro Soju**  
375 ml., Selected Varieties

**4<sup>99</sup>**