



"Make Longs a Part of Your Day"

Sale Sun., 7/27 - Sat., 8/25

at most BIG ISLAND, KAUAI & MAUI LONGS DRUGS

Advertised items are available at participating locations

We accept all manufacturers' coupons, subject to manufacturer's restrictions.  
We reserve the right to limit sales to dealers, restaurants or institutions. General Excise Tax additional.  
Seasonal Merchandise is limited to stock on hand. Advertised items are available at participating locations.  
**LONGS 24-HOUR STORES:** Sale effective Sunday (7/27) 12:00 am thru Saturday (8/2) 12:00 midnight.  
Liquor items will be available for purchase from 6:00 am - 11:00 pm.

Longs Drugs®  
is a proud sponsor **MARCH OF DIMES**

Visit any of our Longs Drug Stores & help us support March of Dimes Hawaii by raising funds for healthier babies. Purchase select Aloha Gourmet Snacks, Old Trapper Beef Sticks & World's Finest Chocolates.

"Together We're Building Healthy Families"



Find more deals  
on **longs.com**

Follow us on Social Media

@LongsDrugsHI



**Maui Style**  
**\*Potato Chips**  
6 oz., Selected Varieties  
**\*Shrimp Chips**  
4.5 oz.  
**2/\$6** WITH CARD  
**Lay's Dip**  
15 oz.  
Selected Varieties  
**4.99** WITH CARD



**Hawaiian Isles**  
**Coffee Roasters Co. Coffee**  
8 oz.  
Selected Varieties  
**7.99** WITH CARD  
**Lion Coffee**  
24 oz.  
Selected Varieties  
**16.99** WITH CARD  
*Select items may contain  
90% foreign-grown coffee*



**Hormel Spam**  
12 oz.  
Selected Varieties  
**2/5.50** WITH CARD



**CeraVe**  
**Skincare & Suncare**  
Selected Varieties  
**Buy 1, Get 1**  
**50% OFF\*\***  
WITH CARD



**CVS Health**  
**Vitamins & Supplements**  
Selected Varieties  
**Buy 1, Get 1**  
**FREE\*\***  
WITH CARD



**Summer Savings**  
Selected Varieties  
*Sale items not included*  
**25% OFF**  
WITH CARD



**Scott**  
**Comfort Plus**  
**Bathroom Tissue**  
Mega Rolls  
6 count or  
Double Rolls  
12 count  
**4.99** WITH CARD



**3M & Bic**  
**Stationery Products**  
Selected Varieties  
**Buy 1, Get 1**  
**50% OFF\*\***  
WITH CARD



**Coca-Cola**  
**Products**  
Twenty-four  
12 oz. cans  
Selected Varieties  
**16.39** WITH CARD



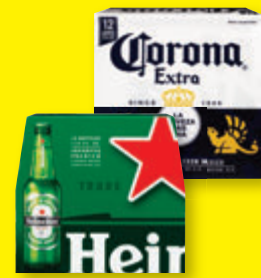
**Michelob Ultra**  
Twenty-four 12 oz. cans  
**27.99** WITH CARD  
**Modelo Especial Beer**  
Twelve 12 oz. cans  
**16.99** WITH CARD



**High Noon**  
Eight 355 ml. cans  
Selected Varieties  
**21.99** WITH CARD  
**White Claw Hard Seltzer**  
Twelve 12 oz. cans  
Selected Varieties  
**19.99** WITH CARD



**Hawaiian Sun**  
**Drinks**  
Six 11.5 oz. cans  
Selected Varieties  
**2/\$7** WITH CARD



**Corona Beer or**  
**Heineken**  
**Lager Beer**  
Twelve 12 oz. bottles or cans  
Selected Varieties  
**16.99** WITH CARD



**\*Budweiser Beer**  
Light or Regular  
**\*Coors Beer**  
Light or Banquet  
**\*Miller Beer**  
Lite or 64  
Thirty 12 oz. cans  
**28.99** WITH CARD



**Aquafina**  
**Purified Water**  
Twenty-four 16.9 oz. bottles  
**9.99** WITH CARD

## CVS Health Toothbrushes

Selected Varieties

Buy 1, Get 1  
**50% OFF\*\***

WITH CARD



## Zyrtec Allergy

Selected Varieties  
Zyrtec-D not included

Buy 1, Get 1  
**50% OFF\*\***

WITH CARD



## KT Tape Pro, Original & Pro Extreme

20 count  
Selected Varieties

Buy 1, Get 1  
**50% OFF\*\***

WITH CARD



## CVS Health Rollator

#792519

**99<sup>99</sup>** WITH CARD

## Medical Equipment

Selected Varieties  
Sale items not included

**20% OFF** WITH CARD



## Arm & Hammer Toothpaste - 4.3 - 6 oz., Spinbrushes & Refills

Selected Varieties

Buy 1, Get 1  
**50% OFF\*\*** WITH CARD



## Zicam

Selected Varieties

Buy 1, Get 1  
**50% OFF\*\***

WITH CARD



## CVS Health Cortisone or Itch Relief Cream

One oz.  
Selected Varieties

**3<sup>99</sup>**

WITH CARD



## CVS Health Baby Wipes

56 - 72 count  
Selected Varieties

**2/\$5** WITH CARD

168 - 192 count  
Selected Varieties

**5<sup>99</sup>** WITH CARD

## Live Better Ultra-Soft Diapers

21 - 32 count  
Selected Varieties

**7<sup>99</sup>** WITH CARD



Sold  
Exclusively  
at Longs!



## CVS Health Mouthwash

One liter  
Selected Varieties

**3<sup>99</sup>**

WITH CARD



## Excedrin

24 - 200 count  
Selected Varieties

Buy 1, Get 1  
**50% OFF\*\***

WITH CARD



## CVS Health \*Antibiotic Ointment or Cream \*Bacitracin

One oz.  
Selected Varieties

**5<sup>99</sup>**

WITH CARD



## Therabreath Oral Care

Selected Varieties

**25% OFF**

WITH CARD



## Tylenol

24 count  
Selected Varieties

**5<sup>99</sup>**

WITH CARD



## CVS Health External Pain Patches, Creams & Gels

Selected Varieties

Buy 1, Get 1  
**50% OFF\*\***

WITH CARD



## Liquid IV Drink Mix

6 count  
Selected Varieties

**9<sup>99</sup>**

WITH CARD



## CVS Health Denture Cleansers

Selected Varieties

Buy 1, Get 1  
**50% OFF\*\***

WITH CARD



## Vicks Zzzquil & Pure Zzz Sleep Aids

Selected Varieties

Buy 1, Get 1  
**50% OFF\*\***

WITH CARD



## Arnicare Pain Relief & Tiger Balm

Selected Varieties

Buy 1, Get 1  
**50% OFF\*\***

WITH CARD



## Nicorette & NicoDerm

Selected Varieties

Buy 1, Get 1  
**50% OFF\*\***

WITH CARD



**\$10** ExtraBucks® when you spend \$35 on ANY of the P&G products shown on this page.  
extrabucks® rewards are good for use on your next purchase. Offer limit of 2 per household with card. Other restrictions may apply.



Olay  
Regenerist  
Skincare  
Selected Varieties  
**25% OFF**  
WITH CARD



Crest & Oral-B  
3D White  
Selected Varieties  
Buy 1, Get 1  
**50% OFF\*\***  
WITH CARD



Prilosec OTC,  
Align &  
Pepto Bismol  
Selected Varieties  
Buy 1, Get 1  
**50% OFF\*\***  
WITH CARD



Always  
Maxi Pads  
20 - 48 count,  
Ultra Thin  
Pads  
24 - 44 count or  
Liners  
60 - 120 count  
Selected Varieties



**6.99**  
WITH CARD



Gillette  
Mach3 or Venus  
Disposable  
Razors  
2 - 3 count  
Selected Varieties  
**6.99**  
WITH CARD



Fixodent  
Denture  
Adhesives  
Selected Varieties  
Buy 1, Get 1  
**50% OFF\*\***  
WITH CARD



Metamucil  
Selected Varieties  
Buy 1, Get 1  
**50% OFF\*\***  
WITH CARD



Ivory Soap  
Original or Aloe  
10 count  
**7.99**  
WITH CARD



Gain  
Fresh Blast  
Liquid Fabric Softener  
44 oz.  
**5.99** WITH CARD  
Liquid Detergent  
Fresh Blast or  
Island Fresh  
88 oz.  
**11.99** WITH CARD



Tide  
Power Pods  
25 count  
Selected Varieties  
**12.99**  
WITH CARD



Tide Simply  
Liquid  
Detergent  
Refreshing Breeze or  
Daybreak Fresh  
117 oz.  
**10.49**  
WITH CARD



Aim  
Toothpaste  
4.4 - 5.5 oz.  
Selected Varieties

Must Buy  
**4/\$5** WITH CARD  
or **1.49** EACH WITH CARD



\*One A Day &  
Flintstones  
Vitamins  
\*Citracal  
Selected Varieties  
Buy 1, Get 1  
**50% OFF\*\*** WITH CARD



Alka-Seltzer  
Digestive &  
Phillips'  
Selected Varieties  
Buy 1, Get 1  
**50% OFF\*\***  
WITH CARD



Alcon  
Disinfecting  
Solution  
\*Clear Care  
Triple Action or  
HydraGlyde  
\*Opti-Free  
**17.99** WITH CARD  
2 count



Midol, Bayer,  
Aleve X & Aleve  
Pain Relievers  
Selected Varieties  
Buy 1, Get 1  
**50% OFF\*\***  
WITH CARD



Miralax  
Selected Varieties  
Buy 1, Get 1  
**50% OFF\*\***  
WITH CARD



Refresh  
Eye Care  
Selected Varieties  
Buy 1, Get 1  
**50% OFF\*\***  
WITH CARD



CVS Health  
Fitted Briefs, Underwear,  
Protective Pads,  
Guards & Shields  
Selected Varieties  
Buy 1, Get 1  
**50% OFF\*\*** WITH CARD



Advil  
80 - 200 count  
Selected Varieties  
Buy 1, Get 1  
**50% OFF\*\***  
WITH CARD



Astepro Allergy  
Regular or Children's  
60 doses  
**14.99** WITH CARD  
Regular - 120 doses  
**23.99** WITH CARD



Q-Tips  
Cotton Swabs  
500 count  
**2/\$9**  
WITH CARD



**11<sup>99</sup>**

WITH CARD

Buy 2 Get  
**\$2**

ExtraBucks® Rewards

## L'Oreal Excellence Creme Triple Care Color

Selected Varieties

ExtraBucks® Rewards  
offer limit of 1 per household with card.



**9<sup>99</sup>**

WITH CARD

Buy 3 Get  
**\$4**

ExtraBucks® Rewards

## Garnier Nutrisse Color Creme

Selected Varieties

ExtraBucks® Rewards  
offer limit of 1 per household with card.



Buy 1, Get 1  
**50% OFF\*\***

WITH CARD

Spend \$25 Get  
**\$7**

ExtraBucks® Rewards

## Revlon & Almay Cosmetics

Selected Varieties

ExtraBucks® Rewards  
offer limit of 1 per household with card.



Buy 1, Get 1  
**50% OFF\*\***

WITH CARD

Buy 2 Get  
**\$2**

ExtraBucks® Rewards

## Neutrogena & Aveeno Suncare

Selected Varieties

ExtraBucks® Rewards  
offer limit of 1 per household with card.



## Just for Men Haircolor

Selected Varieties

**8<sup>99</sup>**

WITH CARD



## elf Cosmetics, Beauty Tools & Skincare

Selected Varieties

Buy 1, Get 1  
**50% OFF\*\***

WITH CARD



## Dove & Degree Dry Sprays

Selected Varieties

Buy 1, Get 1  
**50% OFF\*\***

WITH CARD



## La Roche-Posay Skincare & Skincare

Selected Varieties

**20% OFF**

WITH CARD



## Tresemme Shampoo or Conditioner

28 oz.  
Selected  
Varieties

**6<sup>99</sup>** WITH CARD

## Hairstyling & Haircare

Selected Varieties

Sale items  
not included **20% OFF** WITH CARD



## Kiss Nail, Lash & Accessories

Selected Varieties

Buy 1, Get 1  
**50% OFF\*\***

WITH CARD



## Beauty 360 & CVS Health Facial Wipes, Towelettes & Cleansers

Selected Varieties

Buy 1, Get 1  
**50% OFF\*\*** WITH CARD



## Irish Spring Body Wash

20 oz.  
Selected  
Varieties

**5<sup>79</sup>** WITH CARD

## Softsoap Body Wash

20 oz.  
Selected  
Varieties

**5<sup>99</sup>** WITH CARD



## One+Other, Scunci & Conair Hair Accessories

Selected Varieties

One+Other is  
Sold Exclusively at Longs!

Buy 1, Get 1  
**50% OFF\*\*** WITH CARD



## One+Other Implements & Beauty Tools

Selected Varieties

Buy 1, Get 1  
**50% OFF\*\***

WITH CARD



## Clean & Clear Skincare

Selected Varieties

Buy 1, Get 1  
**50% OFF\*\***

WITH CARD



## Salux Striped Nylon Wash Cloth

Selected Varieties

**2/\$5**

WITH CARD



## Lucky Color Gum Hair Elastic

80 cm.  
Selected Varieties

**3/\$4**

WITH CARD



## Burt's Bees Skincare

Selected Varieties

Buy 1, Get 1  
**50% OFF\*\***

WITH CARD



## Sunglasses, Reading Glasses & Accessories

Selected Varieties

Buy 1, Get 1  
**50% OFF\*\***

WITH CARD



## Softsoap Hand Soap

11.25 oz.  
Selected Varieties

**Must Buy 3/\$8** WITH CARD  
or **2<sup>99</sup>** Each WITH CARD

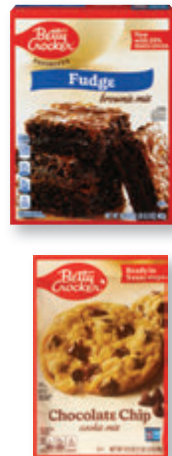




**Heinz Vinegar**  
Apple Cider or Distilled White  
32 oz.  
**3/\$5**  
WITH CARD



**Morton Salt**  
Coarse Kosher 16 oz. or Plain or Iodized 26 oz.  
**2/\$3**  
WITH CARD



**Betty Crocker Brownie Mix**  
16.3 oz. Selected Varieties  
**3/\$5** WITH CARD  
**Cookie Mix**  
17.5 oz. Selected Varieties  
**2/\$6** WITH CARD



**Aloha Gourmet Peanut Cake or Mix Nut Crunch**  
3.25 - 8 oz. Selected Varieties  
**2.99** WITH CARD  
**Chan Pui Mui**  
Seedless or with Seed 6 oz.  
**5.49** WITH CARD



**Kraft Dressing**  
16 oz. Selected Varieties  
**2/\$6**  
WITH CARD



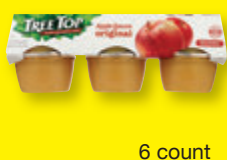
**Akamai Summer Gift Basket**  
**19.99**  
WITH CARD



**Lotus Biscoff Cookies**  
10 count  
**3.99** WITH CARD  
**Cookie Butter**  
Crunchy - 13.4 oz. or Creamy - 14.1 oz.  
**2/\$9** WITH CARD



**Auntie Liu's Peanuts**  
10.6 oz. Selected Varieties  
**5.99**  
WITH CARD



**Tree Top Apple Sauce**  
Original or No Sugar Added  
6 count  
**3.19** WITH CARD



**Dole Fruit Cups**  
in Juice or Gel  
4 count Selected Varieties  
**3.99** WITH CARD



**Milkita Candy**  
3.52 - 4.23 oz. Selected Varieties  
**2/\$6**  
WITH CARD



**\*Mother's Cookies**  
Circus Animal or Mythical Creatures  
**\*Famous Amos Cookies**  
9 oz.  
**2/\$8**  
WITH CARD



**Kasugai Roasted Peas or Nuts**  
2.01 - 2.57 oz. Selected Varieties  
**2/\$3**  
WITH CARD



**Limes**  
One lb.  
**2.79** WITH CARD  
**Lemons**  
2 lb.  
**4.29** WITH CARD  
**Pineapple**  
Single count  
**5.99** WITH CARD  
**Tangerines**  
3 lb.  
**7.99** WITH CARD



**Ginger People Gin Gins**  
3 - 3.5 oz. Selected Varieties  
**3.49**  
WITH CARD



**Keebler Sandwich Crackers**  
8 count Selected Varieties  
**3.79** WITH CARD



**Meiji \*Yan Yan**  
Chocolate or Strawberry 2 oz.  
**\*Hello Panda Cookies**  
Chocolate or Strawberry 2.1 oz.  
**1.39** WITH CARD



**Enjoy Premium Dried Fruits**  
2 - 3.5 oz. Selected Varieties  
**2.39**  
WITH CARD



**Cheez-It Baked Snack Crackers**  
7 oz. Selected Varieties  
**2/6.50**  
WITH CARD



**Hiyoshi Dorayaki**  
5 count Selected Varieties  
**4.99**  
WITH CARD



# Asian Foods

 <b>Paldo Noodle</b> 3.88 - 4.06 oz. bowl Selected Varieties <b>2/\$7</b> WITH CARD	 <b>Sapporo Ichiban Instant Noodles</b> 2.2 oz. Selected Varieties <b>3/\$5</b> WITH CARD	 <b>Aloha Gourmet Korean Style Seaweed</b> 3 count Selected Varieties <b>4/\$5</b> WITH CARD	 <b>Shirakiku Nishime Kombu</b> One oz. <b>2/\$5</b> WITH CARD  <b>Onigiri Nori Dried Seaweed</b> 10 sheets <b>2.99</b> WITH CARD
 <b>Shirakiku Water Chestnuts</b> Sliced or Whole Dr. wt. 5 oz. <b>1.29</b> WITH CARD  <b>Bamboo Shoots</b> Tips or Strips Dr. wt. 8.5 oz. <b>1.59</b> WITH CARD	 <b>Asian Style Vermicelli</b> 2 oz. <b>89¢</b> WITH CARD  <b>Shirakiku Chow Mein Noodles</b> 3 count <b>4.19</b> WITH CARD  <b>Shirakiku Tomoshiraga Somen</b> 8 oz. <b>99¢</b> WITH CARD  <b>Maruten Somen Tsuyu</b> 6.76 oz. <b>2.99</b> WITH CARD	 <b>O'food Bap Cooked Sticky White Rice</b> 12 count <b>13.99</b> WITH CARD  <b>Tteokbokki Sauce</b> 8.4 - 9.1 oz. Selected Varieties <b>5.99</b> WITH CARD	 <b>Tamanoi Sushinoko Sushi Rice Seasoning Mix</b> 2.64 oz. <b>2/\$5</b> WITH CARD  <b>Shirakiku Quick Sushi Mix</b> 7.58 oz. <b>3.59</b> WITH CARD  <b>Shirakiku Cooking Mirin</b> 13.53 oz. <b>2.99</b> WITH CARD  <b>Mizkan Rice Vinegar</b> 24 oz. <b>5.49</b> WITH CARD

 <b>Barilla Pasta</b> One lb. Selected Varieties <b>2/\$4</b> WITH CARD  <b>Carbone Pasta Sauce</b> 15 - 24 oz. Selected Varieties <b>8.99</b> WITH CARD  <b>Campbell's Condensed Soup</b> Tomato or Chicken 10.75 oz. <b>3/\$5</b> WITH CARD  <b>Campbell's Vegetable Soup</b> 10.5 oz. <b>2/\$4</b> WITH CARD	 <b>Del Monte Tomato Sauce</b> Regular or No Salt Added 8 oz. <b>4/\$3</b> WITH CARD  <b>Chicken of the Sea *Sardines</b> 3.75 oz. Selected Varieties <b>4/\$5</b> WITH CARD  <b>Van Camp's Chunk Light Tuna</b> in Water or in Oil - 5 oz. <b>2/\$5</b> WITH CARD  <b>California Girl Sardines</b> in Tomato Sauce Regular or Spicy 15 oz. <b>1.99</b> WITH CARD	 <b>Mum's Mushrooms</b> Pieces & Stems Dr. wt. 4 oz. <b>1.99</b> WITH CARD  <b>Shirakiku Mandarin Orange</b> 11 oz. <b>1.39</b> WITH CARD  <b>Mezzetta Peppers</b> 16 oz. Selected Varieties <b>2/\$6</b> WITH CARD	 <b>Hinode Rice</b> 10.6 oz. Selected Varieties <b>3.99</b> WITH CARD 5 lb. Selected Varieties <b>6.99</b> WITH CARD  <b>Menlo All Purpose Wrappers</b> 16 oz. <b>2/\$5</b> WITH CARD  <b>Hunt's Tomato Ketchup</b> 20 oz. <b>3/\$5</b> WITH CARD
---	---	---	---

 <b>Lunchables Dunkables</b> 2 - 2.9 oz. or <b>Lunchables</b> 3.2 - 4.3 oz. Selected Varieties <b>Must Buy 5/\$5</b> WITH CARD or <b>2/\$4</b> WITH CARD	<b>HOT PRICE! THURS. ONLY!</b> <i>While Supplies Last! Sorry, No Rainchecks.</i>  <b>Baskin Robbins Ice Cream</b> 14 oz. Selected Varieties <b>4.99</b> WITH CARD Sale Price All Week Except Thursday <b>5.49</b> WITH CARD	 <b>Nabisco Chips Ahoy</b> 7 - 13 oz. or <b>Toasted Chips</b> 7.1 - 8.1 oz. Selected Varieties <b>2/\$8</b> WITH CARD	<b>HOT PRICES!</b> <i>While Supplies Last! Sorry, No Rainchecks.</i>  <b>Diamond Bakery *Graham Crackers</b> 8.4 oz., Selected Varieties <b>*Lightly Salted Tops Soda Crackers</b> 8.5 oz. <b>2/\$8</b> WITH CARD  <b>Grab-N-Go</b> 24 count value pack Selected Varieties <b>8.99</b> WITH CARD
 <b>Kraft Singles</b> 10.7 - 12 oz. Selected Varieties <b>2/\$7</b> WITH CARD  <b>Oscar Mayer Deli Fresh Meat</b> 7 - 9 oz. Selected Varieties <b>4.99</b> WITH CARD	 <b>SunHearth Milk</b> One gallon Selected Varieties <b>7.49</b> WITH CARD	 <b>Diamond Bakery Macadamia Nut Shortbread Cookie</b> 0.85 oz. Selected Varieties <b>89¢</b> WITH CARD	 <b>Hawaiian Host Chocolate Covered Macadamia Nuts</b> 3.5 oz. Selected Varieties <b>4.99</b> WITH CARD  <b>Mauna Loa Macadamias Gift Collection</b> 6 count Selected Varieties <b>34.99</b> WITH CARD
 <b>Claussen Pickles or Sauerkraut</b> 24 - 32 oz. Selected Varieties <b>3.99</b> WITH CARD <i>Found in the Fridge</i>	<b>HOT PRICE!</b> <i>While Supplies Last! Sorry, No Rainchecks.</i>  <b>Cap'n Crunch Cereal</b> 10.3 - 12.6 oz. Selected Varieties <b>2/\$7</b> WITH CARD	 <b>Hawaii Candy Assorted Wafer Cookies</b> 15 oz. or <b>Puff Rice Cake</b> 17 oz. Selected Varieties <b>14.99</b> WITH CARD	 <b>Hamakua Macadamia Nuts</b> 4.5 - 5 oz. Selected Varieties <b>7.49</b> WITH CARD 10 oz. stand-up bag Selected Varieties <b>11.99</b> WITH CARD
 <b>Love's Pie</b> 4.5 oz. Selected Varieties <b>3.29</b> WITH CARD  <b>Royal Hearth Bread</b> 24 oz. Selected Varieties <b>7.69</b> WITH CARD	 <b>Kauai Coffee</b> 100% Hawaiian Coffee 7 oz. Selected Varieties <b>13.99</b> WITH CARD	 <b>Bauducco Wafers</b> 5 oz., Selected Varieties <b>2/3.50</b> WITH CARD	 <b>Hershey's Candy</b> 3.5 - 6 oz. box or 4 pack Selected Varieties <b>2/\$3</b> WITH CARD
 <b>*Log Cabin Syrup</b> Original or Lite 24 oz.  <b>*Betty Crocker Bisquick Pancake &amp; Baking Mix</b> Original or Heart Smart 40 oz. Selected Varieties <b>4.49</b> WITH CARD	 <b>Nestle Coffeemate Creamer</b> Original or Fat Free 16 oz. <b>3.99</b> WITH CARD  <b>Nescafe Clasico Instant Coffee</b> 6 - 7 oz. Selected Varieties <b>7.99</b> WITH CARD	 <b>M&amp;M's Chocolate Candy</b> 7.4 - 10.05 oz. share size or <b>Mars Minis</b> 8.9 - 9.7 oz. share size Selected Varieties <b>5.49</b> WITH CARD	 <b>Hershey's Zero Sugar</b> 3 - 5 oz. peg bag Selected Varieties <b>3.49</b> WITH CARD  <b>Milk Chocolate or Reese's Peanut Butter Cups</b> 6 pack <b>6.99</b> WITH CARD





**Monster Energy Drink**  
16 oz.  
Selected Varieties  
**3/\$7** WITH CARD



**Reign Storm Energy Drink**  
12 oz.  
Selected Varieties  
**2/\$5** WITH CARD



**Pepsi Products**  
Ten 7.5 oz. cans, Selected Varieties  
**749** WITH CARD



**Pepsi Products**  
Ten 7.5 oz. cans, Selected Varieties  
**2/\$11** WITH CARD



**Coca-Cola Products**  
Ten 7.5 oz. cans, Selected Varieties  
**749** WITH CARD



**Brisk Beverage**  
One liter  
Selected Varieties  
**2/\$3** WITH CARD



**Gatorade Thirst Quencher**  
28 oz.  
Selected Varieties  
**3/\$5** WITH CARD



**Powerade Drink**  
28 oz.  
Selected Varieties  
**2/\$4** WITH CARD



**Glaceau Vitamin Water**  
20 oz.  
Selected Varieties  
**2/450** WITH CARD



**Lion Cold Brew Coffee**  
11 oz.  
Selected Varieties  
**2/\$4** WITH CARD



**Glaceau Smart Water**  
One liter  
Selected Varieties  
**2/\$5** WITH CARD



**Dasani Water**  
Twenty-four 16.9 oz. bottles  
**1099** WITH CARD



**Jade Snacks**  
1 - 2.5 oz. bag  
Selected Varieties  
**219** WITH CARD



**Zapp's Pretzels**  
5 oz.  
Selected Varieties  
**399** WITH CARD



**Hawaiian Crispy Golden Rings**  
Luau Barbeque or Sweet Maui Onion  
4 oz.  
**449** WITH CARD  
7.5 oz.  
**499** WITH CARD  
Selected Varieties



**Ruffles Potato Chips**  
5.5 - 8.5 oz. or  
**Doritos Tortilla Chips**  
6 - 10.75 oz.  
Selected Varieties  
**2/\$10** WITH CARD



**Bigs Sunflower Seeds**  
5.35 oz.  
Selected Varieties  
**2/\$4** WITH CARD  
**Bigs Pumpkin Seeds**  
5 oz.  
**2/\$6** WITH CARD



**Pringles Mingles**  
5.5 oz.  
Selected Varieties  
**449** WITH CARD



**Lay's Minis**  
3.625 - 5.125 oz. canister  
Selected Varieties  
**2/\$6** WITH CARD



**Well Market Cashews**  
8 oz.  
Selected Varieties  
**499** WITH CARD  
*Sold Exclusively at Longs!*



**Samurai Popcorn**  
5 - 8 oz.  
Selected Varieties  
**479** WITH CARD



**Kaimana Jerky**  
2 oz.  
Selected Varieties  
**599** WITH CARD



**Jack Link's Jerky**  
2.85 oz.  
Selected Varieties  
**399** WITH CARD



**Longs**  
**2026 Calendar**  
with Envelope  
Selected Varieties

**88¢** WITH CARD



**Summer Toys,  
Swim & Dive Products &  
Summer Beach Toys**  
Selected Varieties

**25% OFF** WITH CARD



**Air Wick  
Automatic  
Spray**  
Refills  
Selected Varieties

**5.99** WITH CARD  
Starter Kit  
**11.99** WITH CARD



**Damp Rid  
Moisture  
Absorber**  
10.5 oz.

**5.49** WITH CARD  
Hanging  
15.4 oz. or  
Refill - 2 lb. 10 oz.  
Selected Varieties  
**9.99** WITH CARD



**CVS  
Alkaline  
Batteries**  
\*AA8, AAA8,  
C4, D4 or 9V2  
\*Max - AA6 or AAA6

**6.99** WITH CARD



**Okabashi &  
Summer  
Footwear**  
Selected Varieties

**25% OFF** WITH CARD



**Air Wick  
Scented Oil Warmer**

**1.99** WITH CARD

**Scented  
Essential Oil Refills**  
Selected Varieties

**5.99** WITH CARD



**Playtex  
Living  
Gloves**  
One pair  
Selected Varieties

**2.99** WITH CARD



**Hawaii Spirit  
Large Hawaiian  
Shopping Tote**  
#29526  
Selected Varieties

**6.99** WITH CARD



**House  
to Home  
16 in.  
Oscillating  
Pedestal Fan**  
Black or White

**20.99** WITH CARD



**Air Wick  
Lavender &  
Almond Blossom  
Essential Mist**

**5.99** WITH CARD  
Refill

Starter Kit  
**15.99** WITH CARD



**Chore Boy  
Scrubber Sponge**  
Single count

**2/\$3** WITH CARD

**Ultimate Scrubbers**  
Stainless Steel or Copper  
2 count

**2.99** WITH CARD



**Hawaii Spirit  
Insulated  
Lunch Tote**  
Small  
Selected Varieties

**3.49** WITH CARD

Medium  
Selected Varieties

**3.99** WITH CARD

Large  
Selected Varieties

**4.69** WITH CARD



**Cutter  
Insect  
Repellents**  
Selected Varieties

**25% OFF** WITH CARD



**Air Wick  
White Sage  
Vibrant  
Essential Oil  
Starter Kit**

**6.99** WITH CARD

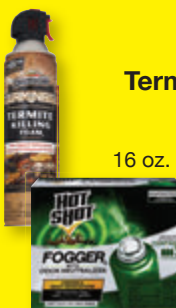


**3M Scotch-Brite  
Scour Pads**  
Heavy Duty - #223 or  
Non-Scratch - #623

3 count  
**1.79** WITH CARD

**Mr. Clean  
Clean Freak Cleaner**

16 oz.  
Selected Varieties  
**4.99** WITH CARD



**Spectracide  
Terminate  
Termite Killing Foam**

**8.99** WITH CARD

**Hot Shot Fogger  
with Odor Neutralizer**

3 count  
**9.99** WITH CARD



**The Drops  
Toilet  
Odor Eliminator**  
Lavender or Citrus  
0.41 oz.

**3.69** WITH CARD



**Libman  
Tornado  
Mop & Refill**

**30% OFF** WITH CARD





## Duracell Coppertop Batteries

AA16 or  
AAA16

**14<sup>99</sup>** WITH CARD

**16<sup>99</sup>** WITH CARD

C8, D8 or 9V4



Brita  
Selected  
Varieties

**30% OFF** WITH CARD



## Chinet All Occasion Premium Napkins

90 count

**2<sup>99</sup>** WITH CARD



\*Compartment  
Trays - 30 count

\*Plates

All Occasion - 60 count or  
Appetizer & Dessert  
70 count

\*Large Bowls  
60 count value pack

**7<sup>99</sup>** WITH CARD



## Dr. Marty Pet Foods & Treats

Selected Varieties

**25% OFF**

WITH CARD



Bazic  
Composition  
Book  
100 sheets  
Selected Varieties

**89¢**

WITH CARD



In Harmony  
Melamine  
Saimin Spoon

**79¢** WITH CARD

Ladle or  
Rice Paddle

**1<sup>29</sup>** WITH CARD



Bounty  
Select-A-Size  
Double Roll  
Paper Towels  
2 count

**6<sup>29</sup>**

WITH CARD



Dawn  
Ez-Squeeze  
Dishwashing  
Liquid  
22 oz. or  
Platinum - 18 oz.

**3<sup>99</sup>**

WITH CARD



Bazic Binder  
1 in.  
Selected Varieties

**2<sup>29</sup>** WITH CARD

1.5 in.  
Selected  
Varieties

**2<sup>59</sup>** WITH CARD

White  
2 in.

**3<sup>99</sup>** WITH CARD



In Harmony  
Melamine  
5 in. Bowl

**1<sup>19</sup>** WITH CARD

6 in. Bowl

**1<sup>79</sup>** WITH CARD



Hefty Slider Bags  
10 - 20 count  
Selected Varieties

**2/\$4** WITH CARD

Saran Plastic Wrap  
Premium - 100 sq. ft. or  
Cling Plus - 200 sq. ft.

**2/\$5** WITH CARD



Persil  
Liquid  
Detergent  
34 oz.  
Selected Varieties

**7<sup>99</sup>**

WITH CARD



Sharpie  
Permanent Markers  
Single count  
Selected Varieties

**99¢** WITH CARD

2 count  
Selected Varieties

**1<sup>89</sup>** WITH CARD



In Harmony  
Melamine  
7 in. Bowl,  
10 in. Plate or  
Platter

**2<sup>49</sup>**

WITH CARD



Glad Tall Kitchen Bags

34 - 40 count  
Selected  
Varieties

**10<sup>49</sup>** WITH CARD



2000 Flushes  
Automatic  
Toilet Bowl  
Cleaner  
1.25 or 3.5 oz.  
Selected Varieties

**2/\$7**

WITH CARD



Chillz  
Ice Wraps  
2 count

**3<sup>99</sup>** WITH CARD

Lunch Kit  
Selected Varieties

**13<sup>99</sup>** WITH CARD



In Harmony  
Melamine  
8 in. Bowl

**2<sup>99</sup>** WITH CARD

9 in. Bowl

**3<sup>99</sup>** WITH CARD



King  
Citronella  
Mosquito Coils

10 count

**2/\$3** WITH CARD



Mosquito  
Coil Holder

**2/\$9** WITH CARD



Drano  
Max Gel  
Clog Remover  
80 oz.

**8<sup>99</sup>**

WITH CARD





**Patron Silver Tequila or Don Julio Blanco Tequila**  
750 ml. **39<sup>99</sup>**



**Hennessy VS Cognac**  
750 ml. **34<sup>99</sup>**



**Hess Collection Allomi Cabernet Sauvignon Wine**  
750 ml. **30<sup>99</sup>**



**Jameson Irish Whiskey**  
750 ml. Selected Varieties **23<sup>99</sup>**



**\*Jack Daniel's Whiskey, Crown Royal Blended Whisky or Ketel One Vodka**  
Selected Varieties



**\*Daou Paso Robles Cabernet Sauvignon**  
750 ml. **22<sup>99</sup>**

**Black Box or Bota Box Wine**  
3 liters, Selected Varieties **19<sup>99</sup>**



**\*Decoy Wine**  
750 ml., Selected Varieties



**\*Tito's Handmade Vodka**  
750 ml. **17<sup>99</sup>**



**La Marca Prosecco**  
Regular or Rose - 750 ml. **15<sup>99</sup>**

**Save 10%**

when you fill this bag with 4 or more 375 ml or larger, bottles of wine and/or spirits priced \$10 or greater. Excludes items priced ending in 97c.

**Mix & match!**

Selection, availability and pricing may vary by store and does not include applicable local, county, state or federal taxes. We reserve the right to limit quantities on all items. Regular retail prices quoted may vary in some stores. Clearance items not included. Beverage items are "CRV" where required by law. Alcoholic beverages available only in licensed stores. All beer & wine sold at minimums where state law regulates pricing.

**Glenlivet 12 Years Old Single Malt Scotch Whisky** - 750 ml. **43<sup>99</sup>**

**Elit Eighteen Vodka** 750 ml. **35<sup>99</sup>**

**Koloa Kauai Rum** 750 ml., Selected Varieties **30<sup>99</sup>**

**Johnnie Walker Black Label Blended Scotch Whisky** - 750 ml. **29<sup>99</sup>**

**1800 Tequila**  
Reposado - 750 ml. Silver - 750 ml. **29<sup>99</sup> 25<sup>99</sup>**

**Bulleit Whiskey** Bourbon or Rye - 750 ml. **26<sup>99</sup>**

**Teremana Blanco Tequila** - 750 ml. **25<sup>99</sup>**

**\*Grey Goose Vodka** 750 ml., Selected Varieties **24<sup>99</sup>**

**\*Tanqueray Gin** - 750 ml. **24<sup>99</sup>**

**Maker's Mark Bourbon Whiskey** 750 ml. **22<sup>99</sup>**

**Kahlua Liqueur** Original or Salted Caramel 750 ml. **19<sup>99</sup>**

**\*Cazadores Tequila** Blanco or Reposado - 750 ml.

**\*Skrewball Peanut Butter Whiskey** 750 ml. **23<sup>99</sup>**

**\*Ocean Vodka** 750 ml. **23<sup>99</sup>**

**La Crema Sonoma Wine**  
Pinot Noir - 750 ml. Chardonnay - 750 ml. **21<sup>99</sup> 15<sup>99</sup>**

**Meiomi Wine** 750 ml., Selected Varieties **18<sup>99</sup>**

**Stolichnaya Vodka** Original or Blueberry 750 ml. **17<sup>99</sup>**

**\*Captain Morgan or Malibu Rum** 750 ml., Selected Varieties

**\*Daou Chardonnay** - 750 ml.

**\*Jam Cellars Chardonnay** - 750 ml.

**\*Jose Cuervo Especial Tequila** Gold or Silver - 750 ml.

**\*Seagram's VO Canadian Whisky** 750 ml. **15<sup>99</sup>**

**Erath Pinot Noir** 750 ml. **14<sup>99</sup>**

**Kim Crawford Marlborough** 750 ml., Selected Varieties **13<sup>99</sup>**

**Hess Select Wine** - 750 ml.  
Cabernet Sauvignon Chardonnay **14<sup>99</sup> 10<sup>99</sup>**

**\*Korbel California Champagne, Bacardi Puerto Rican Rum or William Hill Estate Coastal Collection Wine** 750 ml., Selected Varieties

**\*Bread and Butter** Cabernet Sauvignon or Chardonnay - 750 ml.

**\*Korbel Prosecco or Southern Comfort** 750 ml. **12<sup>99</sup>**

**\*Wente Vineyards Estate Grown, Risata, Smirnoff Vodka, Francis Coppola Diamond Collection Wine or Captain Morgan's Parrot Bay Rum** 750 ml., Selected Varieties

**\*Evan Williams Kentucky Straight Bourbon Whiskey** Regular or Honey Reserve - 750 ml.

**\*Sauza Tequila** - Gold or Silver - 750 ml.

**\*Rodney Strong Wine** Chardonnay or Sauvignon Blanc - 750 ml.

**\*Gran Legacy Vodka** 1.75 liters **11<sup>99</sup>**  
*Sold Exclusively at Long's!*

**Mark West**  
Chardonnay - 750 ml. Pinot Noir - 750 ml. **10<sup>99</sup> 9<sup>99</sup>**

**\*14 Hands Vineyards, Sterling Vintner's Collection Wine, Matua or Murphy Goode Wine** 750 ml., Selected Varieties

**\*7 Deadly Zins Red Blend** - 750 ml. **10<sup>99</sup>**

**\*Bolla Wine or Columbia Crest Grand Estates** Selected Varieties

**\*Gabbiano** Chianti DOCG or Pinot Grigio

**\*Sunny with a Chance of Flowers Chardonnay Wine**

**\*Early Times Kentucky Whiskey** 750 ml. **9<sup>99</sup>**

**Folie a Deux Menage a Trois** 750 ml., Selected Varieties **8<sup>99</sup>**

**Smoking Loon California Wine or Dark Horse Wine** 750 ml., Selected Varieties **7<sup>99</sup>**

**Robert Mondavi Private Selection, Fetzter Wine or Cupcake Vineyards Wine** 750 ml., Selected Varieties **6<sup>99</sup>**

**Sutter Home California Wine** 750 ml., Selected Varieties **2/\$9**



**Josh Cellars** Cabernet Sauvignon or Merlot - 750 ml. **14<sup>99</sup>**



**Fleischmann's Regular Vodka** 1.75 liters **13<sup>99</sup>**

**Fireball Cinnamon Whisky** 750 ml. **12<sup>99</sup>**



**\*Kendall-Jackson Vintner's Reserve** Chardonnay or Rose - 750 ml.

**\*Grand Reserve** Low Calorie Chardonnay - 750 ml.

**\*Avant** - Chardonnay - 750 ml.



**\*Stella Rosa** 750 ml. Selected Varieties **11<sup>99</sup>**

**Imagery Wine or New Amsterdam Vodka** 750 ml. Selected Varieties **10<sup>99</sup>**



**Angeline Pinot Noir Wine** 750 ml. **9<sup>99</sup>**



**Apothic Wine** 750 ml. Selected Varieties **8<sup>99</sup>**

**Clos du Bois North Coast Wine** 750 ml. Selected Varieties **7<sup>99</sup>**



**CK Mondavi and Family Wine, Woodbridge by Robert Mondavi, Barefoot California Wine or Yellow Tail Australia Wine** 750 ml. Selected Varieties **5<sup>99</sup>**





**\*Stella Artois Lager**  
Eighteen 11.2 oz. bottles

**\*Heineken Lager Beer**  
Premium Light  
Eighteen 12 oz. bottles or Original  
Eighteen 12 oz. bottles or cans

**\*Corona Extra Beer**  
Eighteen 12 oz. bottles or cans

**\*Kona Brewing**  
Big Wave or Longboard or  
**Modelo Especial Beer**  
Eighteen 12 oz. cans

**\*Pabst Blue Ribbon Beer**  
Thirty 12 oz. cans

**25<sup>99</sup>** WITH CARD



**\*Natural Beer**  
Ice or Light

**\*Rolling Rock Beer**  
Thirty 12 oz. cans

**24<sup>99</sup>** WITH CARD

**Keystone Light Beer**  
Thirty 12 oz. cans

**23<sup>99</sup>** WITH CARD



**Coors Light Beer or Miller Lite Beer**  
Fifteen 16 oz. aluminum bottles or  
Eighteen 12 oz. cans

**22<sup>99</sup>** WITH CARD



**\*High Noon**  
Eight 355 ml. cans  
Selected Varieties

**\*Budweiser Beer**  
Regular  
Eighteen 12 oz. cans or  
Light  
Eighteen  
12 oz. bottles or cans

**21<sup>99</sup>** WITH CARD



**\*White Claw Hard Seltzer**  
Twelve 12 oz. cans  
Selected Varieties

**\*Truly Berry Mix or Maui Mix Pack Hard Seltzer**  
Twelve 12 oz. cans

**\*Kona Brewing**  
Selected Varieties or  
**Twisted**  
**Original Hard Iced Tea**  
Twelve 12 oz. bottles or cans

**19<sup>99</sup>** WITH CARD



**\*Truly Hard Seltzer**  
Selected Varieties

**\*Michelob Ultra Seltzer**  
Classic Collection or  
Signature Collection

**\*Arizona Hard Tea**  
Green Tea or Variety

**\*Maui Brewing Variety Pack**

**\*Topo Chico Hard Seltzer**  
Twelve 12 oz. cans

**18<sup>99</sup>** WITH CARD



**\*Heritage Collection Beer**  
Twelve 11.2 oz. bottles

**\*Stella Artois Lager**  
Twelve 11.2 oz. bottles or cans

**\*Bud Light Seltzer**  
Twelve 12 oz. cans  
Selected Varieties

**17<sup>99</sup>** WITH CARD



**\*Steinlager Beer**  
Pure or Regular  
Twelve 11.15 oz. bottles

**\*Beck's Regular German Beer**  
Twelve 12 oz. bottles



**\*The Beast Unleashed**  
Twelve 12 oz. cans



**\*Michelob Ultra or Ultra Pure Gold**  
Twelve 12 oz. bottles or cans

**\*Modelo Especial Beer**  
Twelve 12 oz. bottles or cans  
Selected Varieties

**\*Budweiser Beer**  
Twelve 16 oz. aluminum bottles

**16<sup>99</sup>** WITH CARD



**\*Cutwater Spirits**  
Four 12 oz. cans  
Selected Varieties

**\*Coors Beer**  
•Light  
Nine 16 oz. aluminum bottles or  
Twelve 12 oz. bottles



•Light or Banquet  
Twelve 12 oz. cans



**\*Miller Lite Beer**  
Nine 16 oz. aluminum bottles or  
Twelve 12 oz. bottles or cans

**\*Sapporo Beer or O'Doul's Non-Alcoholic Brew**  
Twelve 12 oz. cans

**\*Budweiser Beer**  
Light or Regular  
Twelve 12 oz. bottles or cans

**\*Bud Light Beer**  
Twelve 16 oz. aluminum bottles

**15<sup>99</sup>** WITH CARD



**\*J Pop Chuhi**  
Six 12 oz. cans  
Selected Varieties

**\*Natural Ice Beer**  
Fifteen 12 oz. cans

**13<sup>99</sup>** WITH CARD



**\*Rolling Rock Extra Pale Beer or Pabst Blue Ribbon Beer**  
Twelve 12 oz. cans



**\*Bud Ice Beer**  
Twelve 12 oz. bottles or cans



**\*Keystone Light Beer**  
Fifteen 12 oz. cans

**12<sup>99</sup>** WITH CARD



**\*High Noon**  
Four 355 ml. cans  
Selected Varieties



**\*Maui Brewing**  
Big Swell or Bikini Blonde  
Six 12 oz. cans

**11<sup>99</sup>** WITH CARD



**\*Mike's Hard Lemonade**  
Cranberry or Lemonade or  
**Stella Artois Lager**  
Six 11.2 oz. bottles



**\*Ola Hard Seltzer or White Claw Hard Seltzer**  
Six 12 oz. cans  
Selected Varieties



**\*Golden Road Brewing Golden Road Mango**  
Six 12 oz. cans

**10<sup>99</sup>** WITH CARD



**\*Smirnoff Ice Premium Malt Beverage**  
Six 11.2 oz. bottles  
Selected Varieties



**\*Maui Hard Seltzer**  
Six 12 oz. cans  
Selected Varieties



**\*Michelob Ultra Pure Gold**  
Six 12 oz. bottles



**\*Sierra Nevada Hazy Little Thing IPA**  
Six 12 oz. cans

**9<sup>99</sup>** WITH CARD



**Maui Brewing IPA or Coconut Porter**  
Four 12 oz. cans

**8<sup>99</sup>** WITH CARD

**Jinro or Soonhari Soju**  
375 ml.  
Selected Varieties

**4<sup>99</sup>** WITH CARD