



"Make Longs a Part of Your Day"

**Sale Sun., 8/24 - Sat., 8/30/25**

**at most BIG ISLAND, KAUAI & MAUI LONGS DRUGS**

Advertised items are available at participating locations

We accept all manufacturers' coupons, subject to manufacturer's restrictions.  
We reserve the right to limit sales to dealers, restaurants or institutions. General Excise Tax additional.  
Seasonal Merchandise is limited to stock on hand. Advertised items are available at participating locations.  
**LONGS 24-HOUR STORES:** Sale effective Sunday (8/24) 12:00 am thru Saturday (8/30) 12:00 midnight.  
Liquor items will be available for purchase from 6:00 am - 11:00 pm.

**FREE** **Flu & COVID-19 vaccines\***  
**Schedule ahead at CVS.com**  
Make one appointment for all, whenever it works for you.



Get a  
**\$10 off \$20\***  
coupon with vaccine



\*Select vaccines at no cost with most insurance. Eligibility varies by insurance plan. Subject to availability. Restrictions apply. Available at most Longs Drugs® and MinuteClinic® locations.

\*\* Restrictions apply. Offer not available at Target. Visit CVS.com for details.



**Lay's**  
**Chips** - 4.75 - 8 oz. or  
**Kettle Chips** - 8 oz.  
Selected Varieties **2/\$7** WITH CARD  
**Lay's Dip**  
15 oz. **4.99** WITH CARD  
Selected Varieties



**May's Hawaii**  
**Beef Patties**  
32 oz.  
Selected Varieties  
**12.49**  
WITH CARD



**Hormel**  
**Spam**  
12 oz.  
Selected Varieties  
**2/5.50**  
WITH CARD



**CVS Health**  
**Vitamins & Supplements**  
Selected Varieties  
**Buy 1, Get 1**  
**FREE\*\***  
WITH CARD



**HOT PRICE!**

While Supplies Last!  
Sorry, No Rainchecks.



**Colgate Toothpaste**  
2.5 oz. + 60% more free  
Selected Varieties  
**5/\$5** WITH CARD



**Hawaiian Isles**  
**Coffee Roasters Co. Coffee**  
8 oz.  
Selected Varieties **6.99** WITH CARD  
**Lion Coffee**  
24 oz.  
Selected Varieties **16.99** WITH CARD  
Select items contain  
90% foreign-grown coffee



**Revlon & Almay**  
**Cosmetics**  
Selected Varieties  
**ExtraBucks® Rewards**  
offer limit of 1 per household with card.

**Buy 1, Get 1**  
**50% OFF\*\***  
WITH CARD  
**Spend \$25 Get**  
**\$7**  
ExtraBucks® Rewards



**Bounty**  
**Select-A-Size**  
**Double Roll**  
**Paper Towels**  
6 count  
**16.99**  
WITH CARD



**House to Home**  
**16 in. Oscillating**  
**Pedestal Fan**  
Black or White  
**19.99**  
WITH CARD



**Coca-Cola**  
**Products**  
Twenty-four  
12 oz. cans  
Selected Varieties  
**16.39**  
WITH CARD



**Aquafina**  
**Purified Water**  
Twenty-four 16.9 oz. bottles  
**9.99** WITH CARD



**Hawaiian Sun**  
**Drinks**  
Six 11.5 oz. cans  
Selected Varieties  
**2/\$7**  
WITH CARD



**High Noon**  
Eight 355 ml. cans  
Selected Varieties **21.99** WITH CARD  
**White Claw Hard Seltzer**  
Twelve 12 oz. cans  
Selected Varieties **19.99** WITH CARD



**Michelob Ultra**  
Twenty-four  
12 oz. cans **27.99** WITH CARD  
**Corona Beer or**  
**Heineken Lager Beer**  
Twelve 12 oz.  
bottles or cans  
Selected Varieties **16.99** WITH CARD



\***Budweiser Beer**  
Light or Regular  
\***Coors Beer**  
Light or Banquet  
\***Miller Beer**  
Lite or 64  
Thirty 12 oz. cans  
**28.99** WITH CARD



**Aquafresh Extreme Clean Whitening Action Toothpaste**  
5.6 oz.

**Must Buy**  
**2/\$5** WITH CARD  
or **2.99** EACH WITH CARD



**CVS Health Allergy Relief**  
Selected Varieties  
Pseudoephedrine, Trial & Travel sizes not included

**Buy 1, Get 1**  
**50% OFF\*\***  
WITH CARD



**Always Infinity, Radiant & Pure Cotton Pads & Liners**  
Selected Varieties

**Buy 1, Get 1**  
**50% OFF\*\***  
WITH CARD



**Poise Pads**  
14 - 30 count or Liners  
44 - 48 count  
Selected Varieties

**2/\$14** WITH CARD

**Poise Pads**  
Selected Varieties

**20% OFF** WITH CARD  
*Sale items not included*



**CVS Health Floss, Picks & Gum Care**  
Selected Varieties

**Buy 1, Get 1**  
**50% OFF\*\***  
WITH CARD



**Zyrtec Allergy**  
Selected Varieties  
Zyrtec-D not included

**Buy 1, Get 1**  
**50% OFF\*\***  
WITH CARD



**Playtex Tampons**  
18 - 48 count & OB Tampons  
40 count  
Selected Varieties

**Buy 1, Get 1**  
**50% OFF\*\***  
WITH CARD



**Depend**  
12 - 16 count or **Underwear** - 12 - 21 count  
Selected Varieties

**\*Briefs with Tabs**  
L - 16 count or S/M - 20 count

**\*Men's Guards** - 52 count or **Men's Shields** - 58 count

**16.99** WITH CARD



**Scope Mouthwash**  
Classic or Outlast  
One liter

**5.49**  
WITH CARD



**CVS Health Ibuprofen or Acetaminophen**  
100 count  
Selected Varieties

**5.99**  
WITH CARD



**CVS Health Wound Care**  
Covers & Tapes  
Selected Varieties

**Buy 1, Get 1**  
**50% OFF\*\***  
WITH CARD

**Depend**  
**\*Real-Fit or Silhouette**  
12 - 16 count or **Underwear** - 12 - 21 count  
Selected Varieties

**\*Briefs with Tabs**  
L - 16 count or S/M - 20 count

**\*Men's Guards** - 52 count or **Men's Shields** - 58 count

**16.99** WITH CARD



**Philips Sonicare**  
Selected Varieties

**20% OFF**  
WITH CARD



**CVS Health Anti-Diarrheal, Fiber & Laxatives**  
Selected Varieties

**Buy 1, Get 1**  
**50% OFF\*\***  
WITH CARD



**Arnicare Pain Relief & Tiger Balm**  
Selected Varieties

**Buy 1, Get 1**  
**50% OFF\*\***  
WITH CARD



**CVS Health Baby Wipes**  
56 - 72 count  
Selected Varieties

**2/\$5** WITH CARD

168 - 192 count  
Selected Varieties

**5.99** WITH CARD



**Bausch+Lomb Eye Care & Vitamins**  
Selected Varieties

**Buy 1, Get 1**  
**50% OFF\*\***  
WITH CARD



**Alcon Disinfecting Solution**  
\*Clear Care Triple Action or HydraGlyde  
\*Opti-Free 2 count

**17.99** WITH CARD



**Ollly Vitamins**  
Selected Varieties

**Buy 1, Get 1**  
**50% OFF\*\***  
WITH CARD



**Live Better Ultra-Soft Diapers**  
21 - 32 count  
Selected Varieties

**7.99** WITH CARD

*Sold Exclusively at Longs!*





**CVS Health  
Toothbrushes**  
Selected Varieties

Buy 1, Get 1

**50% OFF\*\***

WITH CARD



**CVS Health  
Alcohol  
Prep Pads**  
120 count

**1.99**

WITH CARD



**CVS Health  
Cortisone or  
Itch Relief  
Cream**  
One oz.  
Selected Varieties

**3.99**

WITH CARD



**CVS Health  
Hydrogen  
Peroxide**

16 oz.

**99¢**

WITH CARD

**70%  
Rubbing  
Alcohol**

16 oz.  
Selected  
Varieties

**1.49**

WITH CARD



**CVS Health  
Glass Digital  
Body Scale**

**10.99**

WITH CARD

**Diet Aids & Supplements**

Selected  
Varieties

**20% OFF**

WITH CARD



**CVS Health  
Digestive  
Probiotics**  
Selected Varieties

Buy 1, Get 1

**50% OFF\*\***

WITH CARD



**CVS Health  
\*Antibiotic  
Ointment or Cream  
\*Bacitracin**  
One oz.  
Selected Varieties

**5.99**

WITH CARD



**CVS Health  
Rollator**  
#792519

**99.99**

WITH CARD

**Medical  
Equipment**  
Selected Varieties  
Sale items not included



**20% OFF**

WITH CARD



**CVS Health  
Nicotine  
Replacement Therapy**  
Selected Varieties

Buy 1, Get 1

**50% OFF\*\***

WITH CARD



**CVS Health  
Hot & Cold  
Therapy**  
Selected Varieties

Buy 1, Get 1

**50% OFF\*\***

WITH CARD



**CVS Health &  
Omron  
Blood Pressure  
Monitors**  
Selected Varieties

**20% OFF**

WITH CARD



**Hero  
Cosmetics  
Acne & Facial  
Treatments**  
Selected Varieties

Buy 1, Get 1

**50% OFF\*\***

WITH CARD



**LA Girl  
Cosmetics**  
Selected Varieties  
Available at select stores

Buy 1, Get 1

**50% OFF\*\***

WITH CARD



**Beauty 360 &  
CVS Health  
Facial Wipes,  
Towelettes &  
Cleansers**  
Selected Varieties

Buy 1, Get 1

**50% OFF\*\***

WITH CARD



**Biosilk &  
Keratin  
Haircare**  
Selected Varieties

**20% OFF**

WITH CARD



**Vaseline**  
Selected Varieties

**25% OFF**

WITH CARD



**Poparazzi &  
One+Other  
Bodycare & Bath  
Accessories**  
Selected Varieties

Buy 1, Get 1

**50% OFF\*\***

WITH CARD



**Toppik  
Hair Building  
Fibers**  
Selected Varieties

**19.99**

WITH CARD



**Hello  
Deodorant**  
2.6 oz.  
Selected Varieties

**5.99**

WITH CARD

**Native  
Deodorant**  
2.4 - 3.5 oz.  
Selected Varieties

**13.99**

WITH CARD



**Bic Razors**  
Selected Varieties

Buy 1, Get 1

**50% OFF\*\***

WITH CARD



**Purell  
Hand Sanitizer**  
8 oz. pump, Selected Varieties

**2.99**

WITH CARD

2 in 1 or Naturals - 10 oz. foam

**3.99**

WITH CARD



**Got2b  
Haircolor**  
Selected Varieties

**11.99**

WITH CARD



**10<sup>99</sup>**

WITH CARD

Buy 2 Get

**\$3**

ExtraBucks® Rewards

## L'Oreal Superior Preference Haircolor

Selected Varieties

ExtraBucks® Rewards

offer limit of 1 per household with card.



## Kiss Nails, Lashes & Accessories

Selected Varieties

Buy 1, Get 1

**50% OFF\*\***

WITH CARD



## L'Oreal Skincare & Suncare

Selected Varieties

ExtraBucks® Rewards

offer limit of 1 per household with card.

**25% OFF**

WITH CARD

Spend \$20 Get

**\$3**

ExtraBucks® Rewards



## Aveeno & Neutrogena Suncare

Selected Varieties

ExtraBucks® Rewards

offer limit of 1 per household with card.

Buy 1, Get 1

**50% OFF\*\***

WITH CARD

Buy 2 Get

**\$2**

ExtraBucks® Rewards



## L'Oreal Le Color Gloss Haircolor

Selected Varieties

**11<sup>99</sup>**

WITH CARD



## Nyx Cosmetics

Selected Varieties Available at select stores

Buy 1, Get 1

**50% OFF\*\***

WITH CARD



## CeraVe Skincare & Suncare

Selected Varieties

Buy 1, Get 1

**50% OFF\*\***

WITH CARD



## Irish Spring Deodorant Soap

8 count Selected Varieties

**6<sup>99</sup>**

WITH CARD



## Head & Shoulders Haircare

Selected Varieties

Buy 1, Get 1

**50% OFF\*\***

WITH CARD



## The Creme Shop Cosmetics & Skincare

Selected Varieties Eyelashes not included

Buy 1, Get 1

**50% OFF\*\***

WITH CARD



## Differin Skincare

Selected Varieties

**25% OFF**

WITH CARD



## Dial Soap

3 count Selected Varieties

**3<sup>79</sup>**

WITH CARD



## Garnier Fructis & Whole Blends Haircare

Selected Varieties

ExtraBucks® Rewards

offer limit of 2 per household with card.

Buy 1, Get 1

**50% OFF\*\***

WITH CARD

Spend \$15 Get

**\$3**

ExtraBucks® Rewards



## Maybelline Sky High Mascara

Selected Varieties

**10<sup>99</sup>**

WITH CARD



## Dial Body Wash

16 oz.

Selected Varieties

**Must Buy 2/\$10** WITH CARD  
or **5<sup>49</sup>** WITH CARD  
Each



## Gillette Sensor2 or Daisy Classic Disposable Razors

10 - 12 count Selected Varieties

**8<sup>99</sup>**

WITH CARD



## Rogaine

Selected Varieties

**25% OFF**

WITH CARD



## OPI Nail Colors & Treatments

Selected Varieties

Buy 1, Get 1

**50% OFF\*\***

WITH CARD



## Softsoap Body Wash

20 oz.

Selected Varieties

**5<sup>99</sup>**

WITH CARD



## Gillette Shave Gel

7 oz.

Selected Varieties

**2/\$7**

WITH CARD





**HOT  
PRICE!**

While Supplies Last!  
Sorry, No Rainchecks.

**Brownie  
Brittle**  
4 - 5 oz.  
Selected Varieties

**3<sup>99</sup>**

WITH CARD



**Hiyoshi  
Dorayaki**  
5 count  
Selected Varieties

**4<sup>99</sup>**

WITH CARD



**Nissin  
Chow Mein  
Noodles**  
4 oz.  
Selected Varieties

**3/\$5**

WITH CARD



**Cup Noodle**  
Seafood - 2.68 oz. or  
Curry - 2.8 oz.

**2/4<sup>50</sup>**

WITH CARD



**Misuzu  
Fried  
Bean Curd**  
2.82 oz.

**2<sup>59</sup>**

WITH CARD



**Shinsyu-Ichi  
Miso  
Instant Soup**  
8 count  
Selected Varieties

**3<sup>49</sup>**

WITH CARD



**Cheez-It  
Baked  
Snack Crackers**  
7 oz.  
Selected Varieties

**2/6<sup>50</sup>**

WITH CARD



**Glico  
Pocky**  
1.41 oz.  
Selected Varieties

**4/\$5**

WITH CARD



**Gen-Ji-Mai  
Quick Cooking  
Whole Grain  
Brown Rice**  
4.4 lb.

**8<sup>99</sup>**

WITH CARD



**\*S&B  
Crunchy Garlic  
with Chili Oil**  
3.88 oz.

**\*The Ginger People  
Ginger**  
Sushi or Minced  
6.7 oz.

**5<sup>99</sup>**

WITH CARD



**Lay's  
Stax**  
5.5 - 5.75 oz.  
Selected Varieties

**2/\$5**

WITH CARD



**Punalu'u  
Shortbread  
Cookies**  
6 oz.  
Selected Varieties

**5<sup>49</sup>**

WITH CARD



**Mr. Brown  
3 in 1  
Coffee or Tea**  
30 count  
Selected Varieties

**5<sup>49</sup>**

WITH CARD



**Shirakiku  
Mandarin Orange**

**1<sup>39</sup>**

WITH CARD



11 oz.

**Del Monte Fruits**  
15.25 oz.

**2/\$5**

WITH CARD



**Enjoy  
Premium  
Dried Fruits**  
2 - 3.5 oz.  
Selected Varieties

**2<sup>39</sup>**

WITH CARD



**Jade  
Snacks**  
1 - 2.5 oz. bag  
Selected Varieties

**2<sup>19</sup>**

WITH CARD



**Blue Diamond  
Almond Breeze Milk**  
32 oz.

Selected Varieties or  
**Planet Oat Oatmilk**  
Original or  
Extra Creamy Original  
32 oz.

**2/\$6**

WITH CARD



**Hawaiian Sun  
Pancake Mix**

6 oz.  
Selected Varieties

**2/\$7**

WITH CARD



**Liko Lehua  
Flavored Butter**

10 oz.  
Selected Varieties

**9<sup>99</sup>**

WITH CARD



**DJ&A  
Vegetable  
Crisps**  
1.59 - 3.2 oz.  
Selected Varieties

**4<sup>99</sup>**

WITH CARD



**Auntie Liu's  
Peanuts**  
10.6 oz.  
Selected Varieties

**5<sup>99</sup>**

WITH CARD



**Heinz  
Vinegar**  
Apple Cider or  
Distilled White  
32 oz.

**3/\$5**

WITH CARD



**McIlhenny  
Tabasco  
Pepper Sauce**  
Classic or  
Cayenne  
2 oz.

**1<sup>79</sup>**

WITH CARD



Hershey's Candy

3.5 - 6 oz. box,  
4 pack or 1.4 - 2 oz.

4/\$5

WITH CARD

Milk Chocolate or Reese's Peanut Butter Cups

649

WITH CARD

6 pack

Frito Lay Chips

1.75 - 4.125 oz.

2/\$5

WITH CARD

Tostitos Salsa

15.5 oz.

2/\$8

WITH CARD

Tostitos Tortilla Chips

9 - 13 oz.

2/\$9

WITH CARD

Nabisco \*Wheat Thins

8 - 8.5 oz., Selected Varieties

\*Chicken in a Biskit

Original or Ranch - 7.5 oz.

2/850

WITH CARD

Nutter Butter

10.5 oz. or Sandwich Cookies

16 oz. family size

2/\$10

WITH CARD

Diamond Bakery \*Hawaiian Shortbread Cookies

- 4.4 oz. or Royal Cream Crackers - 8 oz.

Selected Varieties

\*Saloon Pilot Crackers

Original or Low Sodium/No Cholesterol - 7 oz.

2/\$9

WITH CARD

Maxwell House Instant Coffee

8 oz.

649

WITH CARD

Sanka Instant Coffee

8 oz.

749

WITH CARD

Nongshim Bowl Noodle Soup

3.03 oz.

Selected Varieties

3/\$5

WITH CARD

Campbell's Condensed Soup

Tomato or Chicken 10.75 oz.

3/\$5

WITH CARD

Vegetable 10.5 oz.

2/\$4

WITH CARD

Brunswick Sardines

in Soybean Oil 3.75 oz.

4/\$5

WITH CARD

3.75 oz. Selected Varieties

2/\$3

WITH CARD

Ferrara or Ferrero Candy

8 oz. stand-up bag

Selected Varieties

549

WITH CARD

Hawaiian Host Alohamacs

Milk or Dark Chocolate 5 oz.

649

WITH CARD

3149

WITH CARD

5 pack

Well Market Cashews

16 oz.

Selected Varieties

899

WITH CARD

Sold Exclusively at Longs!

Joongma-Go Korean Cracker Set

19.4 oz.

699

WITH CARD

Nescafe Taster's Choice Instant Coffee

16 - 18 count

Selected Varieties or Nesle Coffeemate Creamer

Original or Fat Free Original 16 oz.

2/\$8

WITH CARD

Planet Oat Oatmilk Creamer

French Vanilla or Caramel 32 oz.

499

WITH CARD

**HOT PRICE!**

While Supplies Last! Sorry, No Rainchecks.

Kraft Original Mac & Cheese Dinner

7.25 oz. box

5/\$5

WITH CARD

4 count cup

499

WITH CARD

Starkist Chunk Light Tuna

in Water or in Vegetable Oil 5 oz.

89¢

WITH CARD

Ritter Sport

3.5 oz. bar

Selected Varieties

2/\$6

WITH CARD

Mauna Loa Macadamias

4 - 5 oz. cup

Selected Varieties

649

WITH CARD

Dry Roasted Unsalted or Hawaiian Sea Salt

849

WITH CARD

6 oz. jar

Gold Emblem Jerky

2.85 oz.

Selected Varieties

399

WITH CARD

Sold Exclusively at Longs!

Tomoe Brand Arare

4 oz.

Selected Varieties

2/\$4

WITH CARD

Hawaii Candy Senbei Cookies

3 oz.

Selected Varieties

359

WITH CARD

SunHearth Milk

One gallon

Selected Varieties

749

WITH CARD

Ore-Ida Potatoes

30 - 32 oz.

Selected Varieties

499

WITH CARD

Snow's Clams

Chopped or Mined 6.5 oz.

219

WITH CARD

Snow's New England Clam Chowder

Ready-to-Serve or Condensed 15 oz.

2/\$5

WITH CARD

Storck Werther's Caramel Popcorn

5.29 oz. or Knoppers Milk Hazelnut Wafer 5.3 oz.

299

WITH CARD

Island Princess Popcorn

4 - 5 oz.

Selected Varieties

469

WITH CARD

Better Jerky Co. Jerky Crisps

2 oz.

Selected Varieties

899

WITH CARD

Daiko Nori Arare

1.41 oz.

Selected Varieties

2/\$5

WITH CARD

Akagi Kari Kari Ume

Salty & Sour or Sweet & Sour 3.52 oz.

399

WITH CARD

Bauducco Wafers

5 oz., Selected Varieties

2/350

WITH CARD

Kellogg's Cereal Raisin Bran

Crunch - 13.8 oz. or Regular - 14.5 oz.

2/\$7

WITH CARD

Special K 9.6 - 13 oz.

399

WITH CARD

Selected Varieties

Blue Bunny Ice Cream

46 - 48 oz.

Selected Varieties

459

WITH CARD

Chef Boyardee Pasta

14.5 - 15 oz.

Selected Varieties or Manwich Original Sloppy Joe Sauce 15 oz.

3/\$5

WITH CARD

Altoids Mints

1.76 oz.

Selected Varieties

279

WITH CARD

Wrigley's Sugarfree Gum

40 - 60 count

369

WITH CARD

Selected Varieties

Daimaru Japanese Hard Candy

2.12 - 2.82 oz.

Selected Varieties

2/\$5

WITH CARD

Marukawa Fusen Gum

60 count

399

WITH CARD

Yick Lung Nibb-Its Twists

4 oz.

599

WITH CARD

Chacha Sunflower Seeds

8.82 oz.

Selected Varieties

2/\$6

WITH CARD

Tim Tam Cookies

5.8 - 7 oz., Selected Varieties

2/\$10

WITH CARD

Brownie Baker Pastries

4 - 6 oz.

Selected Varieties

329

WITH CARD

Love's Bread White or Wheat 22.5 oz.

699

WITH CARD

Del Monte Spinach

13.5 oz. or Sliced Beets 14.5 oz.

3/\$5

WITH CARD

Kewpie Dressing

8 oz.

Selected Varieties

499

WITH CARD

6 **Longs Drugs** extra

WE ACCEPT & CARD BENEFITS - Your Quest Card is welcomed here.

Sunday, 8/24/25 - Saturday, 8/30/25

Advertised items are available at participating locations.

**Longs Drugs** extra 7





## Monster Energy Drink

16 oz.  
Selected Varieties

**3/\$7**

WITH CARD



## Pepsi

Twenty-four 12 oz. cans

**13<sup>99</sup>**

WITH CARD



## Coca-Cola Products

Ten 7.5 oz. cans  
Selected Varieties

**7<sup>49</sup>**

WITH CARD



## Pepsi Products

Six 7.5 oz. cans  
Selected Varieties

**2/\$9**

WITH CARD



## Pepsi Products

Six 24 oz. bottles  
Selected Varieties

**2/\$8**

WITH CARD



**Dasani Water**  
Twenty-four  
16.9 oz. bottles

**10<sup>99</sup>**

WITH CARD



**Glaceau Vitamin Water**  
20 oz.  
Selected Varieties

**2/4<sup>50</sup>**

WITH CARD



## Powerade Drink

28 oz.  
Selected Varieties

**2/3<sup>50</sup>**

WITH CARD



**Lion Cold Brew Coffee**  
11 oz.  
Selected Varieties

**2/\$4**

WITH CARD



**Starbucks Frappuccino**  
13.7 oz.  
Selected Varieties

**2/\$6**

WITH CARD



**Celsius Sparkling Drink**  
12 oz.  
Selected Varieties

**2/\$4**

WITH CARD

# Picnic Foods



**Snyder's of Hanover Seasoned Pretzels**  
11.25 - 12 oz.

Selected Varieties

**2/\$7**

WITH CARD

## Takis Chips

8 - 9.9 oz.  
Selected Varieties

**4<sup>99</sup>**

WITH CARD



**Noh Seasoning or Iced Tea Mix**  
2.5 - 3 lb.  
Selected Varieties

**18<sup>99</sup>**

WITH CARD



## Best Foods Mayonnaise

20 oz.  
Selected Varieties

**6<sup>99</sup>**

WITH CARD

## Real Mayonnaise

48 oz.

**9<sup>49</sup>**

WITH CARD



## HOT PRICE!

While Supplies Last!  
Sorry, No Rainchecks.

**Heinz Tomato Ketchup**

20 oz.

**4/\$5**

WITH CARD



**Yellow Mustard**

20 oz.

**2/\$3**

WITH CARD



**Texas Roasting Company In-Shell Peanuts**  
Salted or Un-Salted  
16 oz.

**5<sup>49</sup>**

WITH CARD



**Hidden Valley Ranch Dip or Seasoning Mix**

One oz.

**2/\$4**

WITH CARD

**The Original Ranch Condiment & Dressing**

Buttermilk or Original - 16 oz.

**4<sup>79</sup>**

WITH CARD



## Lindsay Olives

Sliced  
Dr. wt. 2.25 oz. or Chopped - Dr. wt. 4.25 oz.

**3/\$5**

WITH CARD

Large Pitted  
Dr. wt. 6 oz.

**1<sup>99</sup>**

WITH CARD



**Claussen Pickles or Sauerkraut**  
24 - 32 oz.  
Selected Varieties

**3<sup>99</sup>**

WITH CARD

Found in the Fridge



**Lunchables Dunkables**  
3.2 - 4.3 oz. or 2 - 2.9 oz.  
Selected Varieties

**Must Buy 5/\$5**

WITH CARD

or **2/\$4**

WITH CARD



## Farmer John Wieners

8 count

**2/\$5**

WITH CARD

**Love's Hot Dog Rolls or Hamburger Buns**

8 count

**5<sup>49</sup>**

WITH CARD



**Carrots**

One lb.

**1<sup>49</sup>**

WITH CARD

**Celery**  
One sleeve

**2<sup>19</sup>**

WITH CARD

**Potatoes**  
5 lb.

**3<sup>69</sup>**

WITH CARD

**Sweet Onions**

2 lb.

**3<sup>99</sup>**

WITH CARD



**Charmin  
Mega Roll  
Bathroom  
Tissue**  
6 count

**7<sup>99</sup>**

WITH CARD



**Palmolive Ultra  
Dish Liquid**  
Original or  
Antibacterial  
9.7 oz.

**2/\$3**

WITH CARD



**Comet  
Cleanser  
with Bleach**  
21 oz.  
Selected Varieties

**2<sup>29</sup>**

WITH CARD



**Tide Simply  
Liquid  
Laundry  
Detergent**  
Sunny Breeze  
31 oz. or  
Refreshing Breeze  
32 oz.

**3<sup>79</sup>**

WITH CARD



**Hawaii Spirit  
43 in. Hawaiian Print  
3-Fold Umbrella**

**8<sup>99</sup>**

WITH CARD



**Puffs  
Facial Tissues**  
Ultra Soft or  
Plus Lotion  
48 count

**1<sup>59</sup>**

WITH CARD



**Renuzit  
Gel  
Air Freshener**  
7 oz.  
Selected Varieties

**1<sup>79</sup>**

WITH CARD



**Hawaii Cool  
Flex Chiller  
Tote Bag**  
#30265  
Selected Varieties

**8<sup>99</sup>**

WITH CARD



**Hawaii Spirit  
Collapsible  
Cooler**  
12 can capacity  
#30430  
Selected Varieties

**6<sup>99</sup>**

WITH CARD



**Hawaii Spirit  
Collapsible  
Cooler**  
6 can capacity  
#30429  
Selected Varieties

**5<sup>99</sup>**

WITH CARD



**Duracell  
Coppertop Batteries**

AA16 or AAA16

**14<sup>99</sup>**

WITH CARD

**16<sup>99</sup>**

WITH CARD

C8, D8 or 9V4

## Picnic & Party Needs



**Chinet**

**\*Compartment Trays**

30 count

**\*Plates** - All Occasion - 60 count or  
Appetizer & Dessert - 70 count

**7<sup>99</sup>**

WITH CARD

**\*Large Bowls**  
60 count value pack



**Paradise Eco Products  
Bamboo Chopsticks**

**4/\$5**

WITH CARD

30 count

**Island Living Utensils**

25 count

Selected Varieties

**2/\$3**

WITH CARD



**Ziploc  
Storage or Freezer  
Slider Bags**

13 - 22 count bonus  
Selected Varieties

**2<sup>99</sup>**

WITH CARD



**Saran Plastic Wrap**  
Premium - 100 sq. ft. or  
Cling Plus - 200 sq. ft.

**2/\$5**

WITH CARD



**Bounty Napkins**  
200 count

**3<sup>49</sup>**

WITH CARD



**Ziploc  
Endurables  
Pouches &  
Containers**  
Selected Varieties

**30% OFF**

WITH CARD



**Glad  
Tall  
Kitchen Bags**  
34 - 40 count  
Selected Varieties

**10<sup>49</sup>**

WITH CARD



**Multi-Purpose  
Refillable  
Butane Lighter**

**1<sup>09</sup>**

WITH CARD

**Sun  
Butane Gas  
Cartridge**

**2/\$4**

WITH CARD

7.8 oz.  
#SUN-01



**U Cook  
Premium  
Portable  
Butane  
Gas Stove**

**22<sup>99</sup>**

WITH CARD



**Kingsford  
Charcoal**  
Original or Match Light

8 lb.

**8<sup>99</sup>**

WITH CARD

Original  
16 lb.

**11<sup>99</sup>**

WITH CARD



**Kila Kiawe  
Charcoal**  
10 lb. box

**13<sup>99</sup>**

WITH CARD





**Longs**  
2026 Calendar  
with Envelope  
Selected Varieties

**88¢** WITH CARD



**CVS**  
**Alkaline**  
**Batteries**  
\*AA8, AAA8,  
C4, D4 or 9V2  
\*Max - AA6 or AAA6

**6<sup>99</sup>**

WITH CARD



**Vornado**  
**Oscillating**  
**Tower**  
**Circulator**  
#OSCR37

**89<sup>99</sup>**

WITH CARD



**Downy**  
**Rinse &**  
**Refresh**  
**Fabric Rinse**  
Cool Cotton or  
Fresh Lavender  
48 oz.

**12<sup>99</sup>**

WITH CARD



**Local's**  
**Children's**  
**Boots**  
#303  
Selected Varieties

**9<sup>99</sup>**

WITH CARD



**Nu Finish**  
**Car Polish**  
16 oz.

**10<sup>29</sup>** WITH CARD

**Polish &**  
**Sealant**  
16 oz.

**11<sup>99</sup>** WITH CARD



**3M Scotch-Brite**  
**Heavy Duty**  
**Scour Pad**

Single  
count

**79¢** WITH CARD



**Dobie**  
**Scrubbing Pad**

Single  
count

**1<sup>29</sup>** WITH CARD



**Diamond Magic**  
**Water Spot &**  
**Stain Remover**  
16 oz.

**8<sup>99</sup>**

WITH CARD



**Sun & Sky**  
**Standard**  
**Camp Chair**  
Selected Varieties

**14<sup>99</sup>**

WITH CARD



**Off**  
**Insect**  
**Repellents**  
Selected Varieties

**30% OFF**

WITH CARD



**Chore Boy**  
**Scrubber**  
Single count

**2/\$3** WITH CARD



**Ultimate Scrubbers**  
Stainless Steel or Copper  
2 count

**2<sup>99</sup>** WITH CARD



**Clorox**  
**Bathroom**  
**Ultra Foamer**  
Rain Clean or  
Island Blossom  
16 oz.

**5<sup>99</sup>**

WITH CARD



**Sun & Sky**  
**Deluxe**  
**Camp Chair**  
Selected Varieties

**16<sup>99</sup>**

WITH CARD



**Bug Bam**  
**Mosquito**  
**Band**  
2 count

**2/\$7**

WITH CARD



**Dawn**  
**Scrubber**  
**Sponges**  
3 count  
Selected Varieties

**4<sup>99</sup>**

WITH CARD



**Clorox**  
**Disinfecting**  
**Wet Mopping Cloths**

12 count

**4<sup>99</sup>**

WITH CARD



**American Bag**  
**Premium**  
**Thermal Bag**  
12 in. x 15 in.

**2/\$5** WITH CARD

20 in. x 20 in.

**4<sup>29</sup>** WITH CARD



**Ranger Ready**  
**Repellent**  
Orange or  
Scent Zero  
3.38 oz.

**7<sup>49</sup>**

WITH CARD



**Playtex**  
**Hand Saver**  
**Gloves**  
One pair  
Selected Varieties

**2/\$4**

WITH CARD



**Mr. Clean &**  
**Clorox**  
**Cleaning**  
**Products**  
Selected Varieties

**25% OFF**

WITH CARD



**Patron Silver Tequila or Don Julio Blanco Tequila**  
750 ml. **39<sup>99</sup>**



**Hennessy VS Cognac**  
750 ml. **34<sup>99</sup>**



**Hess Collection Allomi Cabernet Sauvignon Wine**  
750 ml. **30<sup>99</sup>**



**Jameson Irish Whiskey**  
750 ml. Selected Varieties **23<sup>99</sup>**



**\*Jack Daniel's Whiskey, Crown Royal Blended Whisky or Ketel One Vodka**  
Selected Varieties



**\*Daou Paso Robles Cabernet Sauvignon**  
750 ml. **22<sup>99</sup>**

**Black Box or Bota Box Wine**  
3 liters, Selected Varieties **19<sup>99</sup>**



**\*Decoy Wine**  
750 ml., Selected Varieties



**\*Tito's Handmade Vodka**  
750 ml. **17<sup>99</sup>**



**La Marca Prosecco**  
Regular or Rose - 750 ml. **15<sup>99</sup>**

**Save 10%**

when you fill this bag with 4 or more 375 ml or larger, bottles of wine and/or spirits priced \$10 or greater. Excludes items priced ending in 97c.

**Mix & match!**

Selection, availability and pricing may vary by store and does not include applicable local, county, state or federal taxes. We reserve the right to limit quantities on all items. Regular retail prices quoted may vary in some stores. Clearance items not included. Beverage items are "CRV" where required by law. Alcoholic beverages available only in licensed stores. All beer & wine sold at minimums where state law regulates pricing.

**Glenlivet 12 Years Old Single Malt Scotch Whisky** - 750 ml. **43<sup>99</sup>**

**Elit Eighteen Vodka** 750 ml. **35<sup>99</sup>**

**Koloa Kauai Rum** 750 ml., Selected Varieties **30<sup>99</sup>**

**Johnnie Walker Black Label Blended Scotch Whisky** - 750 ml. **29<sup>99</sup>**

**1800 Tequila**  
Reposado - 750 ml. Silver - 750 ml. **29<sup>99</sup> 25<sup>99</sup>**

**Bulleit Whiskey** Bourbon or Rye - 750 ml. **26<sup>99</sup>**

**Teremana Blanco Tequila** - 750 ml. **25<sup>99</sup>**

**\*Grey Goose Vodka** 750 ml., Selected Varieties **24<sup>99</sup>**

**\*Tanqueray Gin** - 750 ml. **24<sup>99</sup>**

**Maker's Mark Bourbon Whiskey** 750 ml. **22<sup>99</sup>**

**Kahlua Liqueur** Original or Salted Caramel 750 ml. **19<sup>99</sup>**

**\*Cazadores Tequila** Blanco or Reposado - 750 ml.

**\*Skrewball Peanut Butter Whiskey** 750 ml. **23<sup>99</sup>**

**\*Ocean Vodka** 750 ml. **23<sup>99</sup>**

**La Crema Sonoma Wine**  
Pinot Noir - 750 ml. Chardonnay - 750 ml. **21<sup>99</sup> 15<sup>99</sup>**

**Meiomi Wine** 750 ml., Selected Varieties **18<sup>99</sup>**

**Stolichnaya Vodka** Original or Blueberry 750 ml. **17<sup>99</sup>**

**\*Captain Morgan or Malibu Rum** 750 ml., Selected Varieties

**\*Daou Chardonnay** - 750 ml.

**\*Jam Cellars Chardonnay** - 750 ml.

**\*Jose Cuervo Especial Tequila** Gold or Silver - 750 ml.

**\*Seagram's VO Canadian Whisky** 750 ml. **15<sup>99</sup>**

**Erath Pinot Noir** 750 ml. **14<sup>99</sup>**

**Kim Crawford Marlborough** 750 ml., Selected Varieties **13<sup>99</sup>**

**Hess Select Wine** - 750 ml.  
Cabernet Sauvignon Chardonnay **14<sup>99</sup> 10<sup>99</sup>**

**\*Korbel California Champagne, Bacardi Puerto Rican Rum or William Hill Estate Coastal Collection Wine** 750 ml., Selected Varieties

**\*Bread and Butter** Cabernet Sauvignon or Chardonnay - 750 ml.

**\*Korbel Prosecco or Southern Comfort** 750 ml. **12<sup>99</sup>**

**\*Wente Vineyards Estate Grown, Risata, Smirnoff Vodka, Francis Coppola Diamond Collection Wine or Captain Morgan's Parrot Bay Rum** 750 ml., Selected Varieties

**\*Evan Williams Kentucky Straight Bourbon Whiskey** Regular or Honey Reserve - 750 ml.

**\*Sauza Tequila** - Gold or Silver - 750 ml.

**\*Rodney Strong Wine** Chardonnay or Sauvignon Blanc - 750 ml.

**\*Gran Legacy Vodka** 1.75 liters **11<sup>99</sup>**  
*Sold Exclusively at Long's!*

**Mark West**  
Chardonnay - 750 ml. Pinot Noir - 750 ml. **10<sup>99</sup> 9<sup>99</sup>**

**\*14 Hands Vineyards, Sterling Vintner's Collection Wine, Matua or Murphy Goode Wine** 750 ml., Selected Varieties

**\*7 Deadly Zins Red Blend** - 750 ml. **10<sup>99</sup>**

**\*Bolla Wine or Columbia Crest Grand Estates** Selected Varieties

**\*Gabbiano** Chianti DOCG or Pinot Grigio

**\*Sunny with a Chance of Flowers Chardonnay Wine**

**\*Early Times Kentucky Whiskey** 750 ml. **9<sup>99</sup>**

**Folie a Deux Menage a Trois** 750 ml., Selected Varieties **8<sup>99</sup>**

**Smoking Loon California Wine or Dark Horse Wine** 750 ml., Selected Varieties **7<sup>99</sup>**

**Robert Mondavi Private Selection, Fetter Wine or Cupcake Vineyards Wine** 750 ml., Selected Varieties **6<sup>99</sup>**

**Sutter Home California Wine** 750 ml., Selected Varieties **2/\$9**



**Josh Cellars** Cabernet Sauvignon or Merlot - 750 ml. **14<sup>99</sup>**



**Fleischmann's Regular Vodka** 1.75 liters **13<sup>99</sup>**

**Fireball Cinnamon Whisky** 750 ml. **12<sup>99</sup>**



**\*Kendall-Jackson Vintner's Reserve** Chardonnay or Rose - 750 ml.

**\*Grand Reserve** Low Calorie Chardonnay - 750 ml.

**\*Avant** - Chardonnay - 750 ml.



**\*Stella Rosa** 750 ml. Selected Varieties **11<sup>99</sup>**

**Imagery Wine or New Amsterdam Vodka** 750 ml. Selected Varieties **10<sup>99</sup>**



**Angeline Pinot Noir Wine** 750 ml. **9<sup>99</sup>**



**Apothic Wine** 750 ml. Selected Varieties **8<sup>99</sup>**

**Clos du Bois North Coast Wine** 750 ml. Selected Varieties **7<sup>99</sup>**



**CK Mondavi and Family Wine, Woodbridge by Robert Mondavi, Barefoot California Wine or Yellow Tail Australia Wine** 750 ml. Selected Varieties **5<sup>99</sup>**





**\*Stella Artois Lager**  
Eighteen 11.2 oz. bottles

**\*Heineken Lager Beer**  
Premium Light  
Eighteen 12 oz. bottles or Original  
Eighteen 12 oz. bottles or cans

**\*Corona Extra Beer**  
Eighteen 12 oz. bottles or cans

**\*Kona Brewing**  
Big Wave or Longboard or  
**Modelo Especial Beer**  
Eighteen 12 oz. cans

**\*Pabst Blue Ribbon Beer**  
Thirty 12 oz. cans

**25<sup>99</sup>** WITH CARD



**\*Natural Beer**  
Ice or Light

**\*Rolling Rock Beer**  
Thirty 12 oz. cans

**24<sup>99</sup>** WITH CARD

**Keystone Light Beer**  
Thirty 12 oz. cans

**23<sup>99</sup>** WITH CARD



**Coors Light Beer or Miller Lite Beer**  
Fifteen 16 oz. aluminum bottles or  
Eighteen 12 oz. cans

**22<sup>99</sup>** WITH CARD



**\*High Noon**  
Eight 355 ml. cans  
Selected Varieties

**\*Budweiser Beer**  
Regular  
Eighteen 12 oz. cans or  
Light  
Eighteen  
12 oz. bottles or cans

**21<sup>99</sup>** WITH CARD



**\*White Claw Hard Seltzer**  
Twelve 12 oz. cans  
Selected Varieties

**\*Truly Berry Mix or Maui Mix Pack Hard Seltzer**  
Twelve 12 oz. cans

**\*Kona Brewing**  
Selected Varieties or  
**Twisted**  
**Original Hard Iced Tea**  
Twelve 12 oz. bottles or cans

**19<sup>99</sup>** WITH CARD



**\*Truly Hard Seltzer**  
Selected Varieties

**\*Michelob Ultra Seltzer**  
Classic Collection or  
Signature Collection

**\*Arizona Hard Tea**  
Green Tea or Variety

**\*Maui Brewing Variety Pack**

**\*Topo Chico Hard Seltzer**  
Twelve 12 oz. cans

**18<sup>99</sup>** WITH CARD



**\*Heritage Collection Beer**  
Twelve 11.2 oz. bottles

**\*Stella Artois Lager**  
Twelve 11.2 oz. bottles or cans

**\*Bud Light Seltzer**  
Twelve 12 oz. cans  
Selected Varieties

**17<sup>99</sup>** WITH CARD



**\*Steinlager Beer**  
Pure or Regular  
Twelve 11.15 oz. bottles

**\*Beck's Regular German Beer**  
Twelve 12 oz. bottles



**\*The Beast Unleashed**  
Twelve 12 oz. cans



**\*Michelob Ultra or Ultra Pure Gold**  
Twelve 12 oz. bottles or cans

**\*Modelo Especial Beer**  
Twelve 12 oz. bottles or cans  
Selected Varieties

**\*Budweiser Beer**  
Twelve 16 oz. aluminum bottles

**16<sup>99</sup>** WITH CARD



**\*Cutwater Spirits**  
Four 12 oz. cans  
Selected Varieties



**\*Coors Beer**  
•Light  
Nine 16 oz. aluminum bottles or  
Twelve 12 oz. bottles



•Light or Banquet  
Twelve 12 oz. cans

**\*Miller Lite Beer**  
Nine 16 oz. aluminum bottles or  
Twelve 12 oz. bottles or cans

**\*Sapporo Beer or O'Doul's Non-Alcoholic Brew**  
Twelve 12 oz. cans

**\*Budweiser Beer**  
Light or Regular  
Twelve 12 oz. bottles or cans

**\*Bud Light Beer**  
Twelve 16 oz. aluminum bottles

**15<sup>99</sup>** WITH CARD



**\*J Pop Chuhi**  
Six 12 oz. cans  
Selected Varieties

**\*Natural Ice Beer**  
Fifteen 12 oz. cans

**13<sup>99</sup>** WITH CARD



**\*Rolling Rock Extra Pale Beer or Pabst Blue Ribbon Beer**  
Twelve 12 oz. cans



**\*Bud Ice Beer**  
Twelve 12 oz. bottles or cans



**\*Keystone Light Beer**  
Fifteen 12 oz. cans

**12<sup>99</sup>** WITH CARD

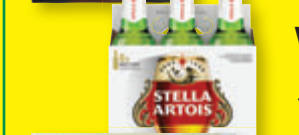


**\*High Noon**  
Four 355 ml. cans  
Selected Varieties



**\*Maui Brewing**  
Big Swell or Bikini Blonde  
Six 12 oz. cans

**11<sup>99</sup>** WITH CARD



**\*Mike's Hard Lemonade**  
Cranberry or Lemonade or  
**Stella Artois Lager**  
Six 11.2 oz. bottles



**\*Ola Hard Seltzer or White Claw Hard Seltzer**  
Six 12 oz. cans  
Selected Varieties



**\*Golden Road Brewing Golden Road Mango**  
Six 12 oz. cans

**10<sup>99</sup>** WITH CARD



**\*Smirnoff Ice Premium Malt Beverage**  
Six 11.2 oz. bottles  
Selected Varieties



**\*Maui Hard Seltzer**  
Six 12 oz. cans  
Selected Varieties



**\*Michelob Ultra Pure Gold**  
Six 12 oz. bottles



**\*Sierra Nevada Hazy Little Thing IPA**  
Six 12 oz. cans

**9<sup>99</sup>** WITH CARD



**Maui Brewing**  
IPA or Coconut Porter  
Four 12 oz. cans

**8<sup>99</sup>** WITH CARD



**Jinro or Soonhari Soju**  
375 ml.  
Selected Varieties

**4<sup>99</sup>** WITH CARD