



"Make Longs a Part of Your Day"

Sale Sun., 4/20 - Sat., 4/26/25

at most OAHU LONGS DRUGS

Advertised items are available at participating locations

We accept all manufacturers' coupons, subject to manufacturer's restrictions.  
We reserve the right to limit sales to dealers, restaurants or institutions. General Excise Tax additional.  
Seasonal Merchandise is limited to stock on hand. Advertised items are available at participating locations.  
**LONGS 24-HOUR STORES:** Sale effective Sunday (4/20) 12:00 am thru Saturday (4/26) 12:00 midnight.  
Liquor items will be available for purchase from 6:00 am - 12:00 midnight.

Find *more* deals on **longs.com**



Follow us on Social Media



@LongsDrugsHI



**Ruffles Potato Chips**  
5.5 - 8.5 oz. or  
**Tostitos Tortilla Chips**  
9 - 13 oz.

Selected Varieties

**2/\$9**

WITH CARD

**Lay's Dip**  
15 oz.  
Selected Varieties

**4.99**

WITH CARD



**Nongshim  
Bowl Noodle  
Soup**  
3.03 oz.

Selected Varieties

**3/\$5**

WITH CARD



**Palm  
Corned Beef Hash**

15 oz.

**3.99**

WITH CARD



**Corned Beef**

11.5 oz.

**4.99**

WITH CARD



**Nature's Bounty &  
Osteo Bi-Flex  
Vitamins & Supplements**  
Selected Varieties

Buy 1, Get 1

**FREE**

WITH CARD



**CVS Health  
First Aid &  
Woundcare**  
Selected Varieties

Buy 1, Get 1

**50% OFF**

WITH CARD



**Campbell's  
Condensed Soup**  
Tomato or Chicken Noodle  
10.75 oz.

**3/\$5**

WITH CARD

Vegetable  
10.5 oz.

**2/\$4**

WITH CARD



**Revlon & Almay Cosmetics**  
Selected Varieties  
Almay available at select stores

**ExtraBucks® Rewards**  
offer limit of 1 per household with card.

Buy 1, Get 1  
**50% OFF**

WITH CARD

Spend \$25 Get

**\$7**

ExtraBucks® Rewards



**Scott  
Comfort Plus  
Bathroom  
Tissue**

6 count mega rolls or  
12 count double rolls

**4.99**

WITH CARD



**Summer  
Savings**  
Selected Varieties  
Sale items not included

**25% OFF**

WITH CARD



**Aquafina Purified Water**  
Twenty-four 16.9 oz. bottles

**6.99**

WITH CARD



**Hawaiian Sun  
Drinks**  
Six 11.5 oz. cans  
Selected Varieties

**2/\$7**

WITH CARD



**Coca-Cola Products**  
Twenty-four 12 oz. cans  
Selected Varieties

**13.99**

WITH CARD



**High Noon**  
Eight 355 ml. cans

Selected  
Varieties

**21.99**

WITH CARD

**White Claw Hard Seltzer**  
Twelve 12 oz. cans

Selected  
Varieties

**17.99**

WITH CARD



**Michelob Ultra**

Twenty-four  
12 oz. cans

**26.99**

WITH CARD

**Corona Beer or  
Heineken Lager Beer**

Twelve 12 oz.  
bottles or cans  
Selected Varieties

**16.99**

WITH CARD



**\*Budweiser Beer**  
Light or Regular  
**\*Coors Beer**  
Light or Banquet  
**\*Miller Beer**  
Lite or 64  
Thirty 12 oz. cans

**28.99**

WITH CARD



**CVS Health  
Vitamins &  
Supplements**  
Selected Varieties

Buy 1, Get 1

**50% OFF\*\***  
WITH CARD



**Claritin  
Allergy**  
Selected Varieties  
*Pseudoephedrine  
not included*

**20% OFF**  
WITH CARD



**Benadryl  
Itch Stopping  
Cream**  
Extra Strength or  
Original Strength

One oz. **5.99** WITH CARD



**Neosporin  
Cream or  
Ointment**  
0.5 oz.

Selected Varieties **6.99** WITH CARD



**\*Carefree Pads**  
28 count, Selected Varieties

**\*Stayfree Pads**  
48 count

**\*Carefree Liners**  
93 count

**2/\$14** WITH CARD

**Carefree Pads**  
40 count

**9.99** WITH CARD



**\*One A Day &  
Flintstones  
Vitamins**  
**\*Citracal**  
Selected Varieties

Buy 1, Get 1

**50% OFF\*\***  
WITH CARD



**Benadryl  
Allergy**  
24 count or  
Children's - 4 oz.  
Selected Varieties

**7.49**  
WITH CARD



**Tiger Balm &  
Arnicare  
Pain Relief**  
Selected Varieties

Buy 1, Get 1

**50% OFF\*\***  
WITH CARD



**Always  
Infinity,  
Radiant &  
Pure Cotton  
Pads and Liners**  
Selected Varieties

Buy 1, Get 1

**50% OFF\*\***  
WITH CARD



**Vitafusion &  
L'il Critters  
Vitamins &  
Digestive**  
Selected Varieties

Buy 1, Get 1

**50% OFF\*\***  
WITH CARD



**Mucinex**  
2 pack  
Selected Varieties

**18.99** WITH CARD

**Mucinex or  
Mucinex DM**  
28 or 40 count

**25.99** WITH CARD



**Phiten Titanium  
Power Tape Precut Strips**  
15 count

**9.99** WITH CARD

**Phiten**  
Selected Varieties  
*Sale items not included*

**20% OFF** WITH CARD



**Playtex Tampons**  
18 - 48 count &  
**O.B. Tampons**  
40 count  
Selected Varieties

Buy 1, Get 1

**50% OFF\*\***  
WITH CARD



**Tylenol  
Regular Strength**  
100 count

**9.99** WITH CARD

**Extra Strength  
Caplets or Tablets**  
100 count

**11.99** WITH CARD



**Afrin  
Cold & Allergy  
Remedy,  
Alka-Seltzer  
Plus Cold &  
Coricidin HBP**  
Selected Varieties

Buy 1, Get 1

**50% OFF\*\*** WITH CARD



**Alka-Seltzer  
Digestive,  
Miralax &  
Phillips'**  
Selected Varieties

Buy 1, Get 1

**50% OFF\*\***  
WITH CARD



**Pampers  
Wipes**  
56 - 72 count  
Selected Varieties

**2.99** WITH CARD

168 - 216 count  
Selected Varieties

**7.99** WITH CARD



**Ricola Drops**  
45 - 50 count or  
**Max** - 34 count  
Selected Varieties

**4.99**  
WITH CARD



**Alcon  
Disinfecting  
Solution**  
\*Clear Care  
Triple Action or  
HydraGlyde  
\*Opti-Free  
2 count

**17.99**  
WITH CARD



**CVS Health  
Fitted Briefs,  
Underwear,  
Protective Pads,  
Guards & Shields**  
Selected Varieties

Buy 1, Get 1

**50% OFF\*\***  
WITH CARD



**Pampers  
Swaddlers or  
Baby-Dry  
Diapers**  
19 - 32 count  
Selected Varieties

**10.99** WITH CARD

*Aqua Pure not included*





**CVS Health  
Baby Toiletries**  
Selected Varieties

Buy 1, Get 1

**50% OFF\*\***

WITH CARD



**Arm & Hammer  
Toothpaste - 4.3 - 6 oz.,  
Spinbrush & Refills**  
Selected Varieties

Buy 1,  
Get 1

**50% OFF\*\***

WITH CARD



**CVS Health  
Flossers, Picks &  
Gum Care**  
Selected Varieties

Buy 1, Get 1

**50% OFF\*\***

WITH CARD



**Crest &  
Oral-B  
Gum Care**  
Selected Varieties

Buy 1, Get 1

**50% OFF\*\***

WITH CARD



**First Response &  
Clear Blue  
Pregnancy Tests**  
Selected Varieties

**25% OFF**

WITH CARD



**CVS Health  
Toothbrushes**  
Selected Varieties

Buy 1, Get 1

**50% OFF\*\***

WITH CARD



**CVS Health  
Antiseptic  
Mouthwash**  
Blue Mint or Green Mint  
1.5 liters

**4.99**

WITH CARD



**Trojan**  
Selected Varieties

Buy 1, Get 1

**50% OFF\*\***

WITH CARD



**Voltaren Arthritis Pain**  
50 - 150 grams, Selected Varieties

**20% OFF**

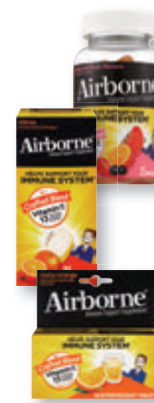
WITH CARD



**Delsym 12 Hr.  
Adult or Children's  
Cough Suppressant**  
Orange or Grape  
3 oz.

**11.99**

WITH CARD



**Airborne**  
Selected Varieties

Buy 1, Get 1

**50% OFF\*\***

WITH CARD



**Schick  
Razors &  
Refills**  
Selected Varieties

Buy 1, Get 1

**50% OFF\*\***

WITH CARD



**Wahl  
Hair Clippers &  
Trimmers**  
Selected Varieties

**20% OFF**

WITH CARD



**Nair  
Hair Remover**  
Selected Varieties

**25% OFF**

WITH CARD



**Curel & Jergens  
Bodycare**  
Selected Varieties  
Trial & Travel sizes  
not included

**20% OFF**

WITH CARD



**CVS Health,  
Beauty 360 & Blade  
Razors, Trimmers &  
Cartridges**  
Selected Varieties

Buy 1, Get 1

**50% OFF\*\***

WITH CARD



**Edge or  
Skintimate  
Shave Gel**  
7 oz.  
Selected Varieties

**2/\$8**

WITH CARD



**Clean & Clear  
Skincare**  
Selected Varieties

Buy 1, Get 1

**50% OFF\*\***

WITH CARD



**The Creme Shop  
Eyelashes**  
One pair  
Selected Varieties

**2.29**

WITH CARD



**CVS Health  
Hand Soap**  
7.5 - 11.25 oz.

Selected  
Varieties

**2/\$3**

WITH CARD

Refill - 50 - 64 oz.

Selected  
Varieties

**4.99**

WITH CARD



**Crystal &  
Tom's of Maine  
Deodorants**  
Selected Varieties

Buy 1, Get 1

**50% OFF\*\***

WITH CARD



**Selena Fresh Cotton Puffs**  
110 count

**2/\$4**

WITH CARD



**10<sup>99</sup>**

WITH CARD

Buy 2 Get

**\$2**

ExtraBucks® Rewards

**L'Oreal Excellence Creme  
Triple Care Color**  
Selected Varieties

ExtraBucks® Rewards  
offer limit of 1 per household with card.



**L'Oreal  
Magic Root Rescue**  
Selected Varieties

ExtraBucks® Rewards  
offer limit of 1 per household with card.

**Must Buy  
3/\$18**

WITH CARD

or **6<sup>99</sup>** WITH CARD  
Each

Buy 3 Get

**\$4**

ExtraBucks® Rewards



**Aveeno  
Haircare,  
Skincare & Suncare**  
Selected Varieties

ExtraBucks® Rewards  
offer limit of 1 per household with card.

Buy 1, Get 1  
**50% OFF\*\***

WITH CARD

Spend \$15 Get

**\$3**

ExtraBucks® Rewards



**Revlon Beauty Tools**  
Selected Varieties

ExtraBucks® Rewards  
offer limit of 1 per household with card.

Buy 1, Get 1  
**50% OFF\*\***

WITH CARD

Buy 2 Get

**\$1**

ExtraBucks® Rewards



**L'Oreal  
Magic Root  
Cover Up**  
Selected Varieties

**9<sup>99</sup>**

WITH CARD



**Dove  
Haircare**  
Selected Varieties

Buy 1, Get 1

**50% OFF\*\***

WITH CARD



**Roc  
Facial Skincare**  
Selected Varieties

Buy 1, Get 1

**50% OFF\*\***

WITH CARD



**Essie Nail Color**  
Selected Varieties

Buy 2 Get

**\$3**

ExtraBucks® Rewards

ExtraBucks® Rewards  
offer limit of 1 per household with card.



**11<sup>99</sup>**

WITH CARD

Buy 2 Get

**\$2**

ExtraBucks® Rewards

**L'Oreal Feria  
Permanent  
Haircolor**  
Selected Varieties  
ExtraBucks® Rewards  
offer limit of 1 per household with card.



**Conair  
Hairstyling  
Appliances &  
Lighted Mirrors**  
Selected Varieties

**20% OFF**

WITH CARD



**Pond's  
Facial Skincare**  
Selected Varieties

Buy 1, Get 1

**50% OFF\*\***

WITH CARD



**O-P-I  
Nail Color &  
Treatments**  
Selected Varieties  
Available at select stores

Buy 1, Get 1

**50% OFF\*\***

WITH CARD



**Hask  
Shampoos &  
Conditioners**  
Selected Varieties

Buy 1, Get 1

**50% OFF\*\***

WITH CARD



**Rogaine**  
Selected Varieties

**25% OFF**

WITH CARD



**Irish Spring  
Deodorant  
Soap**  
3 count  
Selected Varieties

**3<sup>49</sup>**

WITH CARD



**Ardell  
Eyelashes,  
Eyebrow & Duo  
Products**  
Selected Varieties

Buy 1, Get 1

**50% OFF\*\***

WITH CARD



**Got2b  
Haircare**  
Selected Varieties  
Trial sizes  
not included

**20% OFF**

WITH CARD



**Whip's  
Bubble Body Towel**  
Selected Varieties

**2/\$5** WITH CARD

Rich  
Selected Varieties

**2<sup>99</sup>** WITH CARD



**Softsoap  
Hand Soap**  
11.25 oz.  
Selected Varieties

**Must Buy  
3/\$8** WITH CARD

or **2<sup>99</sup>** WITH CARD  
Each



**Coppertone &  
Australian Gold  
Suncare**  
Selected Varieties

Buy 1, Get 1

**50% OFF\*\***

WITH CARD





**Tree Top  
Apple Sauce**  
Original or No Sugar Added  
6 count

**3<sup>19</sup>** WITH CARD



**Bumble Bee  
Snack on the Run**  
3.5 oz.  
Selected Varieties

**2/\$4**  
WITH CARD



**Lee Kum Kee  
Oyster  
Flavored  
Sauce**  
17 oz.

**1<sup>69</sup>** WITH CARD



**Hinode  
Rice**  
Microwave  
10.6 oz.  
Selected Varieties

**3<sup>99</sup>** WITH CARD

5 lb.  
Selected Varieties

**6<sup>99</sup>** WITH CARD



**Jack Link's  
Beef Stick**  
1.84 oz.  
Selected Varieties

**2/\$4**  
WITH CARD



**Betty Crocker  
Bisquick**  
5.5 - 7.75 oz. pouch  
Selected Varieties

**4/\$5**  
WITH CARD



**Lee Kum Kee  
Minced Garlic or  
Minced Ginger**  
7.5 oz.

**3<sup>79</sup>**  
WITH CARD



**Shirakiku  
Tomoshiraga  
Somen**  
8 oz.

**99¢** WITH CARD

**Maruten  
Somen Tsuyu**  
6.76 oz.

**2<sup>99</sup>** WITH CARD



**Lotus  
Biscoff  
Cookies**  
6 count

**1<sup>99</sup>**  
WITH CARD



**Betty Crocker  
Brownie Mix**  
16 - 17.2 oz.  
Selected Varieties

**2/\$6**  
WITH CARD



**Shirakiku  
Mandarin  
Orange**  
11 oz.

**1<sup>39</sup>**  
WITH CARD

## For Your Charcuterie Board



**Land O'Frost  
Bistro Favorites  
Deli Meats**

6 - 8 oz.  
Selected Varieties

**4<sup>69</sup>** WITH CARD



**Cracker Barrel  
Cheese Cubes**  
6 oz.  
Selected Varieties

**3<sup>49</sup>**  
WITH CARD



**Pepperidge Farm  
Goldfish**  
6.6 - 7.2 oz.  
Selected Varieties

**3<sup>79</sup>** WITH CARD

**Milano Cookies**  
6 - 7.5 oz.  
Selected Varieties

**4<sup>99</sup>** WITH CARD



**King's Hawaiian  
Sweet Rolls**  
12 oz.

**5<sup>99</sup>** WITH CARD

**Sweet Bread**  
16 oz.

**6<sup>99</sup>** WITH CARD



**Hawaiian Host  
Macadamias**  
4 oz. stand-up bag  
Selected Varieties

**5<sup>99</sup>** WITH CARD

**Mauna Loa  
Macadamias**  
4 oz. stand-up bag  
Selected Varieties

**6<sup>49</sup>** WITH CARD



**Hawaiian Eateries  
Dip**  
11 oz.  
Selected Varieties

**4<sup>99</sup>** WITH CARD

**Kon Tiki Salsa**  
12 oz.  
Selected Varieties

**6<sup>99</sup>** WITH CARD



**Hershey's Candy  
NUGGETS**  
31.5 - 35.9 oz.  
party pack  
Selected Varieties

**15<sup>99</sup>**  
WITH CARD



**Bananas**  
3 lb.

**3<sup>99</sup>** WITH CARD

**Tangerines or  
Fuji Apples**  
3 lb.

**5<sup>99</sup>** WITH CARD

**Strawberries**  
One lb.

**6<sup>99</sup>** WITH CARD



**Hawaiian Host  
Choco  
Mango**  
2.8 oz.

**3<sup>29</sup>**  
WITH CARD



**Tru Fru  
Chocolate or  
Creme  
Covered Fruit**  
4.2 - 4.5 oz.  
Selected Varieties

**5<sup>99</sup>** WITH CARD



 <p><b>Island Princess Macadamia Popcorn Crunch</b> 12 oz. or <b>Choco Mochi</b> 24 oz.</p> <p><b>11<sup>99</sup></b> WITH CARD</p>	 <p><b>Van Leeuwen French Ice Cream</b> 14 oz., Selected Varieties</p> <p><b>6<sup>99</sup></b> WITH CARD</p>	 <p><b>Nabisco Ritz Crackers</b> 11.8 - 13.7 oz. Selected Varieties</p> <p><b>2/\$7</b> WITH CARD</p> <p><b>Nutter Butter Creme Wafers</b> 10.5 oz. or <b>Sandwich Cookies</b> 16 oz. family size</p> <p><b>2/\$9</b> WITH CARD</p>	 <p><b>Diamond Bakery *Hawaiian Shortbread Cookies</b> 4.4 oz. or <b>Royal Cream Crackers</b> 8 oz. Selected Varieties</p> <p><b>*Saloon Pilot Crackers</b> Original or Low Sodium/No Cholesterol - 7 oz.</p> <p><b>2/\$8</b> WITH CARD</p>	 <p><b>Royal Kona Coffee</b> 8 oz. or 12 count Selected Varieties Select items contain 90% foreign-grown coffee</p> <p><b>9<sup>29</sup></b> WITH CARD</p> <p><b>100% Kona Coffee</b> Ground or Whole Bean 7 oz.</p> <p><b>21<sup>99</sup></b> WITH CARD</p>	 <p><b>Tulip Luncheon Meat</b> Classic or Reduced Sodium 12 oz.</p> <p><b>2/\$4</b> WITH CARD</p>	 <p><b>California Girl Sardines</b> in Tomato Sauce Regular or Spicy 15 oz.</p> <p><b>1<sup>99</sup></b> WITH CARD</p> <p><b>King Topshell</b> 16 oz.</p> <p><b>9<sup>99</sup></b> WITH CARD</p>	 <p><b>Best Foods Mayonnaise</b> 20 oz. Selected Varieties</p> <p><b>6<sup>99</sup></b> WITH CARD</p> <p><b>Real Mayonnaise</b> 48 oz.</p> <p><b>9<sup>49</sup></b> WITH CARD</p>
 <p><b>Hawaiian Host Maui Caramacs</b> 6 oz.</p> <p><b>6<sup>99</sup></b> WITH CARD</p>	 <p><b>Big Island Delights Party Mix</b> Original or Furikake 6 oz.</p> <p><b>6<sup>99</sup></b> WITH CARD</p>	 <p><b>Meiji Hello Panda</b> 7 oz. stand-up pouch Selected Varieties</p> <p><b>2/\$8</b> WITH CARD</p>	 <p><b>Bauducco Wafers</b> 5 oz., Selected Varieties</p> <p><b>2/3<sup>50</sup></b> WITH CARD</p>	 <p><b>Hawaiian Paradise Coffee</b> 7 oz. Selected Varieties</p> <p><b>5<sup>99</sup></b> WITH CARD</p>	 <p><b>Classico Pasta Sauce</b> 15 - 24 oz. Selected Varieties</p> <p><b>2/\$5</b> WITH CARD</p> <p><b>Kraft Original</b> 3.5 oz. big bowl or <b>Velveeta Original</b> 5 oz. big bowl</p> <p><b>2/\$6</b> WITH CARD</p>	 <p><b>Brunswick Sardines</b> in Soybean Oil - 3.75 oz.</p> <p><b>4/\$5</b> WITH CARD</p> <p>3.75 oz. Selected Varieties</p> <p><b>2/\$3</b> WITH CARD</p>	 <p><b>Angelo Pietro Dressing</b> 9.3 oz. Selected Varieties</p> <p><b>5<sup>99</sup></b> WITH CARD</p>
 <p><b>Kaimana Jerky</b> 2 oz. Selected Varieties</p> <p><b>5<sup>99</sup></b> WITH CARD</p>	 <p><b>Act II Microwave Popcorn</b> 3 count Selected Varieties</p> <p><b>2/\$4</b> WITH CARD</p>	 <p><b>Meiji Yan Yan</b> 2 oz. Selected Varieties or <b>Hello Panda Cookies</b> Chocolate or Strawberry 2.1 oz.</p> <p><b>1<sup>39</sup></b> WITH CARD</p>	 <p><b>Cheez-It Baked Snack Crackers</b> 7 oz. Selected Varieties</p> <p><b>2/6<sup>50</sup></b> WITH CARD</p>	 <p><b>SunHearth Milk</b> One gallon Selected Varieties</p> <p><b>7<sup>49</sup></b> WITH CARD</p>	 <p><b>California Pizza Kitchen Pizza</b> Thin Crust or Cauliflower Crust Selected Varieties</p> <p><b>9<sup>99</sup></b> WITH CARD</p>	 <p><b>Sea Alaska Pink Salmon</b> 7.5 oz.</p> <p><b>2/\$5</b> WITH CARD</p>	 <p><b>S&amp;B Prepared Wasabi</b> 1.52 oz. tube</p> <p><b>2/\$5</b> WITH CARD</p> <p><b>Huy Fong Sriracha Sauce</b> 28 oz.</p> <p><b>5<sup>99</sup></b> WITH CARD</p>
 <p><b>Family Sweet Li Hing Mui</b> 6 oz.</p> <p><b>6<sup>49</sup></b> WITH CARD</p>	 <p><b>Morinaga Hi-Chew Chewy Candy</b> 1.76 oz., Selected Varieties</p> <p><b>4/\$5</b> WITH CARD</p> <p>2.82 - 3.53 oz. Selected Varieties</p> <p><b>2<sup>79</sup></b> WITH CARD</p>	 <p><b>Glico Pocky</b> 1.41 oz. Selected Varieties</p> <p><b>4/\$5</b> WITH CARD</p>	 <p><b>Snack Pack Pudding or Gel</b> 4 count Selected Varieties</p> <p><b>2/\$3</b> WITH CARD</p> <p><b>Nature Valley Biscuits</b> Peanut Butter or Cinnamon Almond Butter</p> <p>5 count</p> <p><b>2/\$6</b> WITH CARD</p>	 <p><b>Kellogg's Cereal</b> Froot Loops - 7.9 oz., Frosted Flakes 10.9 oz. or Frosted Mini Wheats 14.5 oz.</p> <p><b>2/\$7</b> WITH CARD</p>	 <p><b>Oscar Mayer Bacon</b> 16 oz., Selected Varieties</p> <p><b>6<sup>99</sup></b> WITH CARD</p>	 <p><b>Knorr Bouillon Cubes</b> 2.1 - 2.5 oz.</p> <p>Selected Varieties</p> <p><b>99¢</b> WITH CARD</p> <p><b>Pasta or Rice Sides</b> 4 - 5.6 oz.</p> <p>Selected Varieties</p> <p><b>3/\$5</b> WITH CARD</p>	 <p><b>Hinokuni Potato Starch</b> 10.58 oz.</p> <p><b>1<sup>99</sup></b> WITH CARD</p> <p><b>Koda Farms Mochiko Flour</b> 16 oz.</p> <p><b>2<sup>99</sup></b> WITH CARD</p>
 <p><b>Boy's Day</b></p> <p><b>Boy's Day Snack Gift Bag</b> 0.74 - 4.44 oz. Selected Varieties</p> <p><b>3<sup>79</sup></b> WITH CARD</p>	 <p><b>Wrigley Life Savers or Skittles</b> 2.75 - 7.2 oz. peg bag Selected Varieties</p> <p><b>2/\$5</b> WITH CARD</p>	 <p><b>Ice Breakers Ice Cubes Gum</b> 40 count Selected Varieties</p> <p><b>4<sup>39</sup></b> WITH CARD</p>	 <p><b>Like Air Puffcorn</b> 4 oz. Selected Varieties</p> <p><b>4<sup>99</sup></b> WITH CARD</p>	 <p><b>Brownie Baker Pastry</b> 4 - 6 oz.</p> <p>Selected Varieties</p> <p><b>2<sup>79</sup></b> WITH CARD</p> <p><b>Love's Royal Hearth Bread</b> 24 oz. Selected Varieties</p> <p><b>6<sup>49</sup></b> WITH CARD</p>	 <p><b>Oui by Yoplait Yogurt</b> Dairy Free or French Style 5 oz. Selected Varieties</p> <p><b>2/\$3</b> WITH CARD</p>	 <p><b>Betty Crocker Mashed Potatoes</b> 4 oz., Selected Varieties</p> <p><b>4/\$5</b> WITH CARD</p> <p><b>Potatoes</b> Au Gratin or Scalloped 4 oz.</p> <p>WITH CARD</p> <p><b>2/4<sup>50</sup></b> WITH CARD</p>	 <p><b>Del Monte Tomato Sauce</b> Regular or No Salt Added 8 oz.</p> <p><b>4/\$3</b> WITH CARD</p>





### Pepsi Products

Twelve 12 oz. cans

Selected Varieties **6<sup>99</sup>** WITH CARD



### Monster Energy Drink

16 oz. Selected Varieties

**3/6<sup>75</sup>** WITH CARD



### Coca-Cola Products

2 liters  
Selected Varieties

**2/\$7**

WITH CARD



### Pure Leaf Tea

18.5 oz.  
Selected Varieties

**2/\$4**

WITH CARD



### Bang Energy Drink

16 oz.  
Selected Varieties

**3/\$6**

WITH CARD



### Coca-Cola Products

Six 7.5 oz. cans  
Selected Varieties

**3<sup>99</sup>**

WITH CARD



### Ocean Spray or Dole Juice

15.2 oz.  
Selected Varieties

**3/\$5**

WITH CARD



### Starbucks Frappuccino

13.7 oz.  
Selected Varieties

**2/\$6**

WITH CARD



### Powerade Drink

28 oz.  
Selected Varieties

**3/\$5**

WITH CARD

### Powerade Sports Drink

Eight 20 oz. bottles

Selected Varieties **6<sup>99</sup>** WITH CARD



### Dasani Water

Twenty-four  
16.9 oz. bottles

**8<sup>99</sup>** WITH CARD



### Menehune Water

Purified or  
Steamed Distilled  
One gallon

**2/\$7**

WITH CARD



### Well Market Cashews

16 oz.  
Selected Varieties

**6<sup>99</sup>**

WITH CARD

Sold Exclusively at Longs!



### Hot Kid Shelly Senbei

5.3 - 5.64 oz.  
Selected Varieties

**2/\$6**

WITH CARD



### Kettle Brand Potato Chips

6.5 - 7.5 oz.  
Selected Varieties

**5<sup>29</sup>**

WITH CARD



### Frito Lay Chips

1.75 - 4.125 oz.  
Selected Varieties

**2/\$5**

WITH CARD

### Smartfood Popcorn

5 - 7.75 oz.  
Selected Varieties

**2/\$8**

WITH CARD



### David's Pumpkin Seeds

5 oz.

**2/\$6**

WITH CARD

### Original Sunflower Seeds

14.5 oz.

**2/\$7**

WITH CARD



### Tomoe Brand Arare

4 oz.  
Selected Varieties

**2/\$4**

WITH CARD



### Hawaiian Chip Company Chips

Original or  
Sweet Potato & Taro  
4 oz.

**7<sup>49</sup>**

WITH CARD



### Daiko Nori Arare

1.41 oz., Selected Varieties

**2/\$5**

WITH CARD

### Akagi Ume Snack

Ama or Karikari

4.23 oz. **3<sup>99</sup>** WITH CARD



### Da Heo Chicharon

3.5 oz.  
Selected Varieties

**2/\$9**

WITH CARD



### Oberto Thin Style Beef Jerky

Original or Peppered  
7 oz. or

### Cocktail Pep Smoked Sausages

12 oz.

**13<sup>99</sup>**

WITH CARD



House To Home  
16 in. Oscillating  
Pedestal Fan

Black or  
White

**22<sup>99</sup>** WITH CARD



Spring Toys

Selected  
Varieties

**25% OFF** WITH CARD



Summer Footwear  
Selected Varieties

Selected  
Varieties

**25% OFF** WITH CARD



3M Scotch-Brite  
Scrub Sponge  
Heavy Duty or Non-Scratch  
Single count

**4/\$5** WITH CARD



House To Home  
12 in.  
Oscillating  
Table Fan

**18<sup>99</sup>** WITH CARD



Swim & Dive  
Products &  
Summer  
Beach Toys  
Selected Varieties

**25% OFF** WITH CARD



Igloo  
Playmate Elite  
Cooler  
16 qt. capacity

**22<sup>99</sup>** WITH CARD



Damp Rid  
Moisture Absorber  
10.5 oz.

**5<sup>49</sup>** WITH CARD

Hanging - 15.4 oz. or  
Refill - 2 lb. 10 oz.  
Selected Varieties

**9<sup>99</sup>** WITH CARD



Honeywell  
Turboforce  
Power  
Air Circulator

**17<sup>99</sup>** WITH CARD



Sun & Sky  
Kid's  
Camp Chair  
Hippo or Lady Bug

**13<sup>99</sup>** WITH CARD



Igloo  
Wheelie Cool  
Cooler  
38 qt. capacity

**38<sup>99</sup>** WITH CARD



Terro  
Ant Killer  
One oz.

**2<sup>99</sup>** WITH CARD

Outdoor  
Liquid Ant Baits

**7<sup>29</sup>** WITH CARD

4 count



Lasko  
20 in.  
Box Fan

**25<sup>99</sup>** WITH CARD



Sun & Sky  
Standard  
Camp Chair  
Selected Varieties

**14<sup>99</sup>** WITH CARD



Hawaii Spirit  
Large Hawaiian  
Shopping Tote  
#29526  
Selected Varieties

**6<sup>99</sup>** WITH CARD



Scent Bomb  
Concentrated  
Air Freshener  
One oz.  
Selected Varieties

**2<sup>69</sup>** WITH CARD



Vornado  
Small  
Tower  
Circulator  
#DUO

**39<sup>99</sup>** WITH CARD



Sun & Sky  
Deluxe  
Camp Chair  
Selected Varieties

**16<sup>99</sup>** WITH CARD



Pyrex  
Bakeware  
Selected Varieties

**30% OFF** WITH CARD



Armor All  
Wipes  
25 - 30 count  
Selected Varieties

**6<sup>29</sup>** WITH CARD





# Duracell Coppertop Batteries

AA16 or AAA16

**15<sup>99</sup>** WITH CARD

C8, D8 or 9V4

**16<sup>99</sup>** WITH CARD



**Chinet  
Compartment  
Trays**  
30 count,  
**Large Bowls**  
60 count value pack,  
**All Occasion  
Plates**  
60 count or  
**Appetizer &  
Dessert Plates**  
70 count

**7<sup>99</sup>** WITH CARD



**Multi-Purpose  
Refillable  
Butane Lighter**

**1<sup>09</sup>** WITH CARD



**Sun Butane  
Gas Cartridge**  
#SUN-01  
7.8 oz.

**2/\$4** WITH CARD



**Tide Simply  
Liquid Detergent**  
Refreshing Breeze or Daybreak Fresh

117 oz.

**10<sup>49</sup>** WITH CARD



**CVS  
Alkaline Batteries**  
\*AA8, AAA8,  
C4, D4 or 9V2  
\*Max - AA6 or AAA6

**6<sup>99</sup>**

WITH CARD



**Island Accents  
Chopsticks**  
Wooden  
30 count

**2/\$1** WITH CARD

**Bamboo**  
30 count

**5/\$5** WITH CARD

Sold  
Exclusively  
at Longs!



**U Cook  
Premium  
Portable  
Gas Stove**  
Butane

**22<sup>99</sup>**

WITH CARD



**Gain  
Liquid Fabric Softener**

44 oz.

**5<sup>99</sup>** WITH CARD

**Liquid Detergent**  
Super Fresh Blast or  
Island Fresh  
88 oz.

**11<sup>99</sup>** WITH CARD



50 count

**Glad  
Snack Bags**

**2/\$3** WITH CARD

**Storage Gallon Bags**  
20 count or  
**Sandwich Bags**  
50 count

**2/\$4** WITH CARD



**Island Accents  
Forks or  
Spoons**  
24 count

**4/\$5**

WITH CARD

Sold  
Exclusively  
at Longs!



**Kila Kiawe Charcoal**  
10 lb. box

**13<sup>99</sup>** WITH CARD



**Arm & Hammer  
Liquid Detergent**  
27.5 - 28 oz.  
Selected Varieties or  
**Power Paks**  
14 count

**4<sup>99</sup>**

WITH CARD



**Ellemoi  
Facial Tissue**  
5 pack

**8<sup>29</sup>**

WITH CARD



**Chinet  
All Occasion  
Premium  
Napkins**  
90 count

**2<sup>99</sup>**

WITH CARD



**Palmolive  
Dish Liquid**  
Ultra Strength or  
Antibacterial  
20 oz.

**2<sup>79</sup>**

WITH CARD



**Shout  
Color Catcher**  
24 count

**4<sup>59</sup>** WITH CARD

**Laundry Cleaners**  
Selected Varieties

**25% OFF** WITH CARD



**AJW  
Slippers**  
Sizes 6 - 13  
Selected Varieties

**3<sup>99</sup>**

WITH CARD



**Bounty  
Select-A-Size  
Double Roll  
Paper Towels**  
2 count

**6<sup>29</sup>**

WITH CARD



**Lysol  
Air Sanitizer**  
10 oz.  
Selected Varieties

**7<sup>99</sup>**

WITH CARD



**Clorox  
Toilet Wand**

Refills  
10 count

**5<sup>99</sup>** WITH CARD



Cleaning Kit

**10<sup>99</sup>** WITH CARD



**Patron Silver Tequila or Don Julio Blanco Tequila**  
750 ml. **39<sup>99</sup>**

**Jameson Irish Whiskey**  
750 ml. **24<sup>99</sup>**  
Selected Varieties



**\*Grey Goose Vodka or Baileys Irish Cream Liqueur**  
750 ml., Selected Varieties **\*1800 Silver Tequila**  
750 ml. **25<sup>99</sup>**



**Ketel One Vodka**  
750 ml., Selected Varieties **23<sup>99</sup>**

**Jack Daniel's Whiskey or Crown Royal Blended Whisky**  
750 ml., Selected Varieties **22<sup>99</sup>**



**Meiomi Wine**  
750 ml., Selected Varieties **18<sup>99</sup>**

**Decoy Wine**  
Selected Varieties or **Tito's Handmade Vodka**  
750 ml. **17<sup>99</sup>**

**GET 10% OFF** when you buy 6 or more gift sets or bottles of wine and/or spirits  
Bottles 375 ml. or below are excluded

**Mix & match!** Selection, availability and pricing may vary by store and does not include applicable local, county, state or federal taxes. We reserve the right to limit quantities on all items. Regular retail prices quoted may vary in some stores. Beverage items are "CRV" where required by law. Alcoholic beverages available only in licensed stores. All beer & wine sold at minimums where state law regulates pricing.

**\*Koloa Kauai Rum - Selected Varieties**  
**\*Johnnie Walker Black Label Blended Scotch Whisky**  
750 ml. **30<sup>99</sup>**

**Bulleit Whiskey**  
Bourbon or Rye - 750 ml. **26<sup>99</sup>**

**\*Cazadores Tequila**  
Blanco or Reposado **\*Ocean Vodka**  
750 ml. **24<sup>99</sup>**

**Kahlua Liqueur**  
Original or Salted Caramel 750 ml. **23<sup>99</sup>**

**\*Daou Paso Robles Cabernet Sauvignon - 750 ml.**  
**\*Maker's Mark Bourbon Whiskey** 750 ml. **22<sup>99</sup>**

**La Crema Sonoma Wine - 750 ml.**  
Pinot Noir Chardonnay **22<sup>99</sup> 16<sup>99</sup>**

**Black Box or Bota Box Wine**  
3 liters, Selected Varieties **19<sup>99</sup>**

**\*Captain Morgan Rum, Malibu Rum or Jim Beam Kentucky Straight Bourbon Whiskey**  
Selected Varieties

**\*La Marca Prosecco - Regular or Rose**  
**\*Jam Cellars Chardonnay, Erath Pinot Noir or Rodney Strong Chalk Hill Chardonnay Wine**  
750 ml. **15<sup>99</sup>**

**Josh Cellars Cabernet Sauvignon or Merlot - 750 ml.** **14<sup>99</sup>**

**Beringer Brothers Wine**  
Red Blend or Cabernet Sauvignon or 750 ml. **14<sup>49</sup>**

**\*Edna Valley Vineyards, Bacardi Puerto Rican Rum or Kim Crawford Marlborough**  
750 ml., Selected Varieties

**\*Evan Williams Kentucky Straight Bourbon Whiskey**  
Regular or Honey Reserve - 750 ml.

**\*Fleischmann's Regular Vodka**  
1.75 liters **13<sup>99</sup>**

**19 Crimes Wine**  
Cali Gold Sparkling 750 ml. **13<sup>99</sup>**  
750 ml. Selected Varieties **8<sup>99</sup>**

**\*Korbel California Champagne**  
Selected Varieties or **Korbel Prosecco**  
**\*Sauza Tequila - Gold or Silver**  
**\*Fireball Cinnamon Whisky or Southern Comfort**  
750 ml. **12<sup>99</sup>**

**\*Captain Morgan's Parrot Bay Rum, Imagery Wine, Risata or Wentz Vineyards Estate Grown**  
750 ml., Selected Varieties

**\*Black Velvet Canadian Whisky, Hess Select Cabernet Sauvignon Wine or 7 Deadly Zins Red Blend**  
750 ml. **11<sup>99</sup>**

**14 Hands Vineyards, Matua or Sterling Vintner's Collection Wine**  
750 ml. Selected Varieties **10<sup>99</sup>**

**Folie A Deux Ménage a Trois**  
Bourbon Barrels Cabernet Sauvignon 750 ml. **10<sup>99</sup>**  
750 ml. Selected Varieties **8<sup>99</sup>**

**Bolla Wine - Selected Varieties, Angeline Pinot Noir Wine or Early Times Kentucky Whisky**  
750 ml. **9<sup>99</sup>**

**Bogle Vineyards**  
750 ml., Selected Varieties **8<sup>89</sup>**

**Dark Horse Wine or Smoking Loon California Wine**  
750 ml., Selected Varieties **7<sup>99</sup>**

**Fetzer Wine or Robert Mondavi Private Selection**  
750 ml., Selected Varieties **6<sup>99</sup>**

**Barefoot California Wine, CK Mondavi and Family Wine or Yellow Tail Australia Wine**  
750 ml. Selected Varieties **5<sup>99</sup>**

**Sutter Home California Wine**  
750 ml., Selected Varieties **4<sup>99</sup>**



**Jose Cuervo Especial Tequila**  
Gold or Silver 750 ml. **15<sup>99</sup>**

**Francis Coppola Diamond Collection Wine**  
750 ml., Selected Varieties **13<sup>99</sup>**



**\*Smirnoff Vodka or Stella Rosa**  
750 ml. Selected Varieties

**\*Kendall-Jackson Avant - Chardonnay, Grand Reserve**  
Low Calorie Chardonnay or Vintner's Reserve Chardonnay or Rose 750 ml. **11<sup>99</sup>**



**New Amsterdam Vodka**  
Selected Varieties 750 ml. **10<sup>99</sup>**

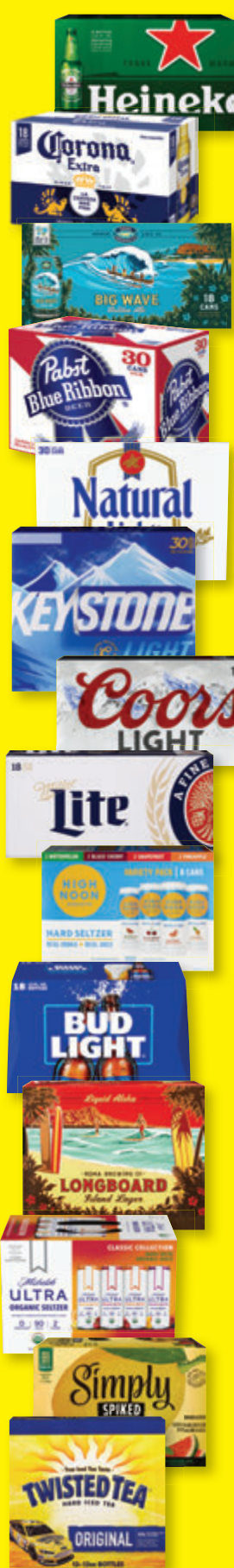
**Murphy Goode Wine**  
Selected Varieties 750 ml. **9<sup>99</sup>**



**Apothic Wine or Clos du Bois North Coast Wine**  
750 ml., Selected Varieties **8<sup>99</sup>**

**Woodbridge by Robert Mondavi**  
750 ml., Selected Varieties **5<sup>99</sup>**





**\*Stella Artois Lager**

Eighteen 11.2 oz. bottles

**\*Heineken Lager Beer**

Original or Premium Light  
Eighteen 12 oz. bottles or  
Original

Eighteen 12 oz. cans

**\*Corona Extra Beer**  
Eighteen 12 oz.  
bottles or cans

**\*Modelo**

**Especial Beer**  
Eighteen 12 oz. cans

**\*Kona Brewing**  
Big Wave or Longboard  
Eighteen 12 oz. cans

**\*Pabst Blue Ribbon Beer**  
Thirty 12 oz. cans

**25<sup>99</sup>**

**Natural Beer**  
Ice or Light,  
**Rolling Rock Beer or**  
**Keystone Light Beer**  
Thirty 12 oz. cans

**23<sup>99</sup>**

**Coors Light or**  
**Miller Lite Beer**  
Fifteen 16 oz.  
aluminum bottles or  
Eighteen 12 oz. cans

**22<sup>99</sup>**

**High Noon**  
Eight 355 ml. cans  
Selected Varieties or  
**Budweiser Beer**  
Light - Eighteen 12 oz. bottles or  
Light or Regular  
Eighteen 12 oz. cans

**21<sup>99</sup>**

**\*Kona Brewing**  
Twelve 12 oz. bottles or cans  
Selected Varieties  
**\*Michelob Ultra Seltzer**  
Classic or Signature Collection

**\*Nectar Seltzer**  
Variety Pack or Azuiki

**\*Corona Refresca,**  
**Simply**  
**Spiked Lemonade or**  
**Vizzy Hard Seltzer**  
Variety Pack

**\*Truly Berry Mix or**  
**Maui Mix Pack**  
**Hard Seltzer**  
Twelve 12 oz. cans

**\*Twisted Original**  
**Hard Iced Tea**  
Twelve 12 oz. bottles or cans

**19<sup>99</sup>**



**\*Truly Hard Seltzer**  
Selected Varieties  
**\*The Beast Unleashed,**  
**Topo Chico**  
**Hard Seltzer or**  
**Maui Brewing**  
**Variety Pack**  
Twelve 12 oz. cans

**18<sup>99</sup>**

**\*Heritage Collection Beer**  
Twelve 11.2 oz. bottles

**\*Bud Light Seltzer or**  
**White Claw**  
**Hard Seltzer**  
Twelve 12 oz. cans  
Selected Varieties

**\*Beck's**  
**Regular German Beer**  
Twelve 12 oz. bottles

**17<sup>99</sup>**

**\*Steinlager Beer**  
Pure or Regular  
Twelve 11.15 oz. bottles  
**\*Stella Artois Lager**  
Twelve 11.2 oz. bottles or cans

**\*Modelo Especial Beer**  
Selected Varieties

**\*Michelob Ultra**  
Regular or Pure Gold  
Twelve 12 oz. bottles or cans

**\*Bud Light Beer**  
Next - Twelve 12 oz. cans,  
Lime or Platinum  
Twelve 12 oz. bottles or cans

**16<sup>99</sup>**

**\*Jack Daniel's Perfect Mix**  
Four 355 ml. cans, Selected Varieties  
**\*Cutwater Spirits**  
Four 12 oz. cans, Selected Varieties

**\*Coors Beer**  
•Light - Nine 16 oz. aluminum bottles or  
Twelve 12 oz. bottles  
•Light or Banquet - Twelve 12 oz. cans

**\*Miller Lite Beer**  
Nine 16 oz. aluminum bottles or  
Twelve 12 oz. bottles or cans

**\*Budweiser Beer**  
Light or Regular  
•Twelve 12 oz. bottles or cans  
•Twelve 16 oz. aluminum bottles

**\*O'Doul's Non-Alcoholic Brew**  
Twelve 12 oz. cans

**\*Sapporo Beer**  
Twelve 12 oz. cans

**15<sup>99</sup>**

**\*Crown Royal**  
Four 355 ml. cans  
Selected Varieties

**\*Kirin Ichiban Beer**  
Twelve 12 oz. bottles or cans

**\*Natural Ice Beer**  
Fifteen 12 oz. cans

**13<sup>99</sup>**



**\*Funny Water**  
Classic or Sweet & Spicy  
Twelve 12 oz. cans

**\*Pabst**  
**Blue Ribbon Beer**  
Twelve 12 oz. cans  
**\*Keystone Light Beer**  
Fifteen 12 oz. cans

**12<sup>99</sup>**

**\*High Noon**  
Four 355 ml. cans  
Selected Varieties  
**\*Maui Brewing**  
Big Swell or Bikini Blonde

**\*Waikiki**  
**Brewing Company**  
Eee Pah IPA or  
Aloha Spirit Blonde Ale  
Six 12 oz. cans

**\*Bud Ice Beer**  
Twelve 12 oz. bottles  
**\*Rolling Rock**  
**Extra Pale Beer**  
Twelve 12 oz. cans

**11<sup>99</sup>**

**\*Jack Daniel's**  
**Country Cocktails**  
Six 10 oz. bottles  
Selected Varieties

**\*Ola Hard Seltzer**  
Selected Varieties or  
**Kona Spiked**  
**Tropical Punch**  
**Island Seltzer**  
Six 12 oz. cans

**10<sup>99</sup>**

**\*Smirnoff Ice**  
**Premium Malt Beverage**  
Selected Varieties

**\*Mike's Hard Lemonade**  
Cranberry or Lemonade

**\*Stella Artois Lager**  
Six 11.2 oz. bottles

**\*Maui or White Claw**  
**Hard Seltzer**  
Selected Varieties

**\*Sierra Nevada IPA**  
**Hazy Little Thing**  
Six 12 oz. cans

**9<sup>99</sup>**

**\*Maui Brewing**  
Coconut Porter or IPA  
Four 12 oz. cans  
**\*Michelob Ultra Pure Gold**  
Six 12 oz. bottles

**8<sup>99</sup>**

**Soonhari or Jinro Soju**  
375 ml., Selected Varieties

**4<sup>99</sup>**

