



"Make Longs a Part of Your Day"

Sale Sun., 4/27 - Sat., 5/3/25

at most OAHU LONGS DRUGS

Advertised items are available at participating locations

We accept all manufacturers' coupons, subject to manufacturer's restrictions.  
We reserve the right to limit sales to dealers, restaurants or institutions. General Excise Tax additional.  
Seasonal Merchandise is limited to stock on hand. Advertised items are available at participating locations.  
**LONGS 24-HOUR STORES:** Sale effective Sunday (4/27) 12:00 am thru Saturday (5/3) 12:00 midnight.  
Liquor items will be available for purchase from 6:00 am - 12:00 midnight.



**Summer Savings**  
Selected Varieties  
Sale items not included

**25% OFF**

WITH CARD



**Hormel Spam**  
12 oz.  
Selected Varieties

**2/5<sup>50</sup>**

WITH CARD



**Utage Premium Short Grain Rice**  
15 lb.

**12<sup>99</sup>**

WITH CARD



**HOT PRICES!**

While Supplies Last! Sorry, No Rainchecks.

**Diamond Bakery**

\*Hawaiian Biscuits - 4 oz.

\*Cookies or Crackers - 4.5 oz.  
Selected Varieties

**2/\$4**

WITH CARD

Crackers - 30 oz.  
Selected Varieties

**8<sup>99</sup>**

WITH CARD



**Lay's**  
\*Chips - 4.75 - 8 oz.

\*Kettle Chips  
8 oz.  
Selected Varieties

**2/\$8**

WITH CARD

Dip - 15 oz.  
Selected Varieties

**4<sup>99</sup>**

WITH CARD



**Hormel Compleats**

9 - 10 oz.  
Selected Varieties

**2/\$6**

WITH CARD

**Mary Kitchen Corned Beef Hash**  
14 oz.

**2/\$7**

WITH CARD



**Bounty Double Roll Select-A-Size Paper Towels**  
6 count

**16<sup>99</sup>**

WITH CARD



**Kokie Cosmetics**  
Selected Varieties

**30% OFF**

WITH CARD



**Nature's Bounty & Osteo Bi-Flex Vitamins & Supplements**  
Selected Varieties

Buy 1, Get 1

**FREE\*\***

WITH CARD



**Hawaiian Sun Drinks**  
Six 11.5 oz. cans  
Selected Varieties

**2/\$7**

WITH CARD



**Coca-Cola Products**  
Twenty-four 12 oz. cans  
Selected Varieties

**13<sup>99</sup>**

WITH CARD



\***Budweiser Beer**  
Light or Regular  
\***Coors Beer**  
Light or Banquet  
\***Miller Beer**  
Lite or 64  
Thirty 12 oz. cans

**28<sup>99</sup>**

WITH CARD



**High Noon**  
Eight 355 ml. cans  
Selected Varieties

**21<sup>99</sup>**

WITH CARD

**White Claw Hard Seltzer**  
Twelve 12 oz. cans

Selected Varieties

**17<sup>99</sup>**

WITH CARD



**Michelob Ultra**

Twenty-four 12 oz. cans

**26<sup>99</sup>**

WITH CARD

**Corona Beer or Heineken Lager Beer**

Twelve 12 oz. bottles or cans  
Selected Varieties

**16<sup>99</sup>**

WITH CARD



**Jose Cuervo Especial Tequila**  
Gold or Silver  
750 ml.

**15<sup>99</sup>**

WITH CARD

**Patron Silver Tequila**

750 ml.

**39<sup>99</sup>**

WITH CARD



**Colgate  
Extra Clean  
Toothbrush**  
Soft, Medium or Firm

**5/\$5**

WITH CARD



**Alcon  
Pataday, Zaditor,  
Systane,  
GenTeal &  
Opti-Free  
Eye Drops**  
Selected Varieties

Buy 1, Get 1

**50% OFF\*\***

WITH CARD



**Poise**  
**Pads** - 14 - 30 count or  
**Liners** - 44 - 48 count

Selected  
Varieties

**Poise Pads**  
Selected Varieties  
Sale items not included

**2/\$12**

WITH CARD

**20% OFF**

WITH CARD



**U by Kotex  
Clean & Secure  
\*Maxi Pads**  
14 - 24 count  
**\*Ultra Thin Pads**  
20 - 22 count  
Selected Varieties

**2/\$7**

WITH CARD

**Liners**  
80 - 96 or 129 count

Selected  
Varieties

**6.49**

WITH CARD



**Act  
Oral Care**  
Selected Varieties

Buy 1, Get 1

**50% OFF\*\***

WITH CARD



**Bausch+Lomb  
Eye Care &  
Vitamins**  
Selected Varieties

Buy 1, Get 1

**50% OFF\*\***

WITH CARD



**Depend**

**\*Real Fit or Silhouette**  
12 - 16 count, Selected Varieties

**\*Underwear**

12 - 21 count, Selected Varieties

**\*Briefs with Tabs**

L - 16 count or S/M - 20 count

**\*Men Guards - 52 count or  
Shields - 58 count**

**14.99**

WITH CARD



**U by Kotex  
\*Ultra Thin Pads**  
13 - 18 count  
**\*Liners**  
40 - 50 count  
Selected Varieties

**2/\$9**

WITH CARD



**Oral-B  
Glide & Satin  
Floss**  
2 count  
Selected Varieties

Buy 1, Get 1

**50% OFF\*\***

WITH CARD



**CVS Health  
Allergy Relief**  
Selected Varieties  
*Pseudoephedrine,  
Trial & Travel sizes  
not included*

Buy 1, Get 1

**50% OFF\*\***

WITH CARD



**Icy Hot &  
Aspercreme**  
Selected Varieties

Buy 1, Get 1

**50% OFF\*\***

WITH CARD



**CVS Health  
Baby Wipes**  
56 - 72 count  
Selected Varieties

**2/\$5**

WITH CARD

168 - 192 count  
Selected Varieties

**5.99**

WITH CARD



**Live Better  
Ultra-Soft  
Diapers**  
21 - 32 count  
Selected Varieties

**7.99**

WITH CARD

**Sold  
Exclusively  
at Longs!**



**Poligrip &  
Polident**  
Selected Varieties

Buy 1, Get 1

**50% OFF\*\***

WITH CARD



**Zyrtec Allergy**  
Selected Varieties  
*Zyrtec D not included*

Buy 1, Get 1

**50% OFF\*\***

WITH CARD



**Schiff  
Move Free &  
Mega Red**  
30 - 120 count  
Selected Varieties

Buy 1, Get 1

**50% OFF\*\***

WITH CARD



**Aleve, AleveX,  
Bayer & Midol  
Pain Relievers**  
Selected Varieties

Buy 1, Get 1

**50% OFF\*\***

WITH CARD



**Advil**  
80 - 200 count  
Selected Varieties

Buy 1, Get 1

**50% OFF\*\***

WITH CARD



**Q-Tips  
Cotton  
Swabs**  
625 count

**5.49**

WITH CARD





**Nicorette & NicoDerm**  
Selected Varieties

Buy 1, Get 1  
**50% OFF\*\***  
WITH CARD



**CVS Health Whitening Treatments**  
Selected Varieties

Buy 1, Get 1  
**50% OFF\*\***  
WITH CARD



**CVS Health Mouthwash**  
One liter  
Selected Varieties

**3.99**  
WITH CARD



**Aquafresh Toothpaste**  
Selected Varieties

**Must Buy**  
**2/\$6** WITH CARD  
or **3.49** WITH CARD  
Each



**Atkins**  
Selected Varieties

Buy 1, Get 1  
**50% OFF\*\***  
WITH CARD



**CVS Health Hot/Cold Therapy**  
Selected Varieties

Buy 1, Get 1  
**50% OFF\*\***  
WITH CARD



**Ollly Vitamins**  
Selected Varieties

Buy 1, Get 1  
**50% OFF\*\***  
WITH CARD



**CVS Health Vitamins & Supplements**  
Selected Varieties

Buy 1, Get 1  
**50% OFF\*\***  
WITH CARD



**Optimum Nutrition, Six Star & Premier Protein Supplements**  
Selected Varieties

Buy 1, Get 1  
**50% OFF\*\*** WITH CARD



**NeilMed Sinus**  
Selected Varieties

Buy 1, Get 1  
**50% OFF\*\***  
WITH CARD



**CVS Health Cough Drops**  
140 - 160 count  
Selected Varieties

**5.99**  
WITH CARD



**NYX Cosmetics**  
Selected Varieties  
Available at select stores

Buy 1, Get 1  
**50% OFF\*\***  
WITH CARD



**L'Oreal Voluminous Mascara**  
Selected Varieties

**25% OFF**  
WITH CARD



**Plexaderm Skincare**  
18 count

**29.99**  
WITH CARD



**Gillette Mach3 or Venus Disposable Razors**  
2 - 3 count  
Selected Varieties

**6.99** WITH CARD



**Dial Antibacterial Liquid Hand Soap**  
11 oz.  
Selected Varieties

**2/\$5** WITH CARD  
Refill  
Gold or Spring Water  
**6.99** WITH CARD  
52 oz.



**Burt's Bees**  
Selected Varieties

Buy 1, Get 1  
**50% OFF\*\***  
WITH CARD



**Beauty 360 & CVS Health Facial Wipes, Towelettes & Cleansers**  
Selected Varieties

Buy 1, Get 1  
**50% OFF\*\*** WITH CARD  
*Sold Exclusively at Longs!*



**Gillette Shave Gel**  
7 oz.  
Selected Varieties

**2/\$7**  
WITH CARD



**Maui Moisture Hair Care**  
Selected Varieties

**7.99**  
WITH CARD



**One+Other Cotton**  
Selected Varieties

Buy 1, Get 1  
**50% OFF\*\***  
WITH CARD  
*Sold Exclusively at Longs!*



**Sun Bum Suncare**  
Selected Varieties

**20% OFF**  
WITH CARD



**9<sup>99</sup>**

WITH CARD

Buy 3 Get

**\$4**

ExtraBucks® Rewards

## Garnier Nutrisse Color Creme

Selected Varieties

ExtraBucks® Rewards  
offer limit of 1 per household with card.



## Covergirl Beauty Tools & Cosmetics

Selected Varieties

Buy 1, Get 1

**50% OFF\*\***

WITH CARD



## CeraVe Skincare & Suncare

Selected Varieties

**25% OFF**

WITH CARD



## Olay Face & Body Skincare

Selected Varieties

Buy 1, Get 1

**50% OFF\*\***

WITH CARD



## Hoyu Bigen Permanent Powder

0.21 oz.  
Selected Varieties

**5<sup>49</sup>**

WITH CARD

## Speedy Conditioning Color Kit or Men's Speedy Permanent Color

2.82 oz.  
Selected Varieties

**8<sup>99</sup>**

WITH CARD

## One Push Permanent Cream Color

Selected Varieties

**10<sup>99</sup>**

WITH CARD



## Neutrogena Cosmetics

Selected Varieties

ExtraBucks® Rewards  
offer limit of 1 per household with card.

Buy 1, Get 1

**50% OFF\*\***

WITH CARD

Spend \$25 Get

**\$5**

ExtraBucks® Rewards



## Aveeno & Neutrogena Suncare

Selected Varieties  
Trial sizes  
not included

ExtraBucks® Rewards  
offer limit of 1 per household with card.

Buy 1, Get 1

**50% OFF\*\***

WITH CARD

Buy 2 Get

**\$2**

ExtraBucks® Rewards



## Garnier Skincare

Selected Varieties

ExtraBucks® Rewards  
offer limit of 1 per household with card.

Buy 1, Get 1

**50% OFF\*\***

WITH CARD

Spend \$20 Get

**\$3**

ExtraBucks® Rewards



## e.l.f. Cosmetics, Skincare & Beauty Tools

Selected Varieties

Buy 1, Get 1

**50% OFF\*\***

WITH CARD



## Dove Beauty Bars

2 count  
Selected Varieties

**5<sup>49</sup>**

WITH CARD



## Dove & Degree Dry Sprays

Selected Varieties

Buy 1, Get 1

**50% OFF\*\***

WITH CARD



## L'Oreal Le Color Gloss Haircolor

Selected Varieties

**11<sup>99</sup>**

WITH CARD



## Head & Shoulders Haircare

Selected Varieties

Buy 1, Get 1

**50% OFF\*\***

WITH CARD



## Dial Bar Soap

3 count  
Selected Varieties

**3<sup>99</sup>**

WITH CARD



## Dial Body Wash

16 oz.  
Selected Varieties

**Must Buy**  
**2/\$10** WITH CARD  
or **5<sup>49</sup>** WITH CARD  
Each



## Premium & Hawaiian Fragrances & Gift Sets

Selected Varieties

**15% OFF**

WITH CARD



## Herbal Essences Haircare

Selected Varieties

Buy 1, Get 1

**50% OFF\*\***

WITH CARD



## Vaseline Skincare

Selected Varieties

**25% OFF**

WITH CARD



## Salux Striped Nylon Wash Cloth

Selected Varieties

**2/\$5**

WITH CARD



# Asian Foods

 <p><b>Shanyi Protein Bowl</b> 8.8 oz. Selected Varieties <b>4<sup>99</sup></b> WITH CARD</p> <p><b>24 Vegan Meal</b> 7.8 - 10.5 oz. <b>5<sup>99</sup></b> WITH CARD</p>	 <p><b>Daisho Nabe Soup Base</b> 26.4 - 26.45 oz. Selected Varieties <b>3<sup>79</sup></b> WITH CARD</p>	 <p><b>Shinsyu-Ichi Miso Instant Soup</b> 8 count Selected Varieties <b>3<sup>49</sup></b> WITH CARD</p>	 <p><b>JFC Furikake</b> 1.7 oz. Selected Varieties <b>2/\$5</b> WITH CARD</p>
 <p><b>CJ Korean BBQ Sauce</b> Kalbi or Bulgogi 29.6 oz. <b>4<sup>99</sup></b> WITH CARD</p>	 <p><b>Mum's Mushrooms</b> Pieces &amp; Stems Dr. wt. 4 oz. <b>1<sup>79</sup></b> WITH CARD Whole Dr. wt. 5.5 oz. <b>2<sup>39</sup></b> WITH CARD</p>	 <p><b>Shimaya Dashino-Moto</b> 1.75 oz. <b>4/\$5</b> WITH CARD</p>  <p><b>Shirakiku Miso Soybean Paste</b> Shiro or Awase 26.45 oz. <b>4<sup>99</sup></b> WITH CARD</p>	 <p><b>Shirakiku Mixed Fruits</b> 11 oz. <b>1<sup>59</sup></b> WITH CARD</p>  <p><b>Whole Seedless Lychee</b> 1.25 lb. <b>2<sup>99</sup></b> WITH CARD</p>
 <p><b>Aloha Gourmet Korean Style Seaweed</b> 3 count Selected Varieties <b>4/\$5</b> WITH CARD</p>	 <p><b>Shirakiku Bamboo Shoots</b> Tips or Strips Dr. wt. 8.5 oz. <b>1<sup>59</sup></b> WITH CARD</p>	 <p><b>Shirakiku Water Chestnuts</b> Whole or Sliced Dr. wt. 5 oz. <b>1<sup>29</sup></b> WITH CARD</p>	

 <p><b>Caffe D'Vita Premium Instant Mix</b> 8.5 - 19 oz. Selected Varieties <b>4<sup>99</sup></b> WITH CARD</p> <p>Espresso - 3 oz. <b>5<sup>99</sup></b> WITH CARD</p>	 <p><b>Chef Boyardee Pasta</b> 14.5 - 15 oz. Selected Varieties <b>2/\$4</b> WITH CARD</p>	 <p><b>*Log Cabin Syrup</b> Lite or Original - 24 oz.</p>  <p><b>*Betty Crocker Bisquick Pancake &amp; Baking Mix</b> Original or Heart Smart 40 oz. <b>4<sup>49</sup></b> WITH CARD</p>	 <p><b>Hunt's Tomato Ketchup</b> 20 oz. <b>3/\$5</b> WITH CARD</p>
 <p><b>General Mills Cereal</b> Cocoa Puffs 10.4 oz., Lucky Charms 10.5 oz. or Cinnamon Toast Crunch - 12 oz. <b>2/\$6</b> WITH CARD</p>	 <p><b>General Mills Treat Bars</b> 8 count Selected Varieties <b>2/\$7</b> WITH CARD</p>	 <p><b>Hawaiian Hula Dressing</b> Papaya Seed or Maui Style Sweet Onion 8 oz. <b>5<sup>59</sup></b> WITH CARD</p>	 <p><b>Heinz Vinegar</b> Apple Cider or Distilled White 32 oz. <b>3/\$5</b> WITH CARD</p>
	 <p><b>*Philadelphia Bagel Chips &amp; Cream Cheese Dip</b> 2.5 oz., Selected Varieties</p>  <p><b>*Ore-Ida Just Crack An Egg</b> Denver Scramble or All American Scramble 3 oz. <b>2/\$4</b> WITH CARD</p>	 <p><b>Hawaiian Sun Coconut Milk</b> 13.5 oz. <b>2/\$4</b> WITH CARD</p>	 <p><b>McIlhenny Tabasco Pepper Sauce</b> Classic or Cayenne 2 oz. <b>1<sup>79</sup></b> WITH CARD</p>



# Asian Foods

 <b>Nice Brand Bean Thread</b> 7.75 oz. <b>3<sup>99</sup></b> WITH CARD  <b>Kam Yen Jan Chinese Style Sausage</b> 12 oz. <b>6<sup>59</sup></b> WITH CARD	 <b>Sun Noodle Ramen</b> 12.3 - 15.6 oz. Selected Varieties <b>2/\$8</b> WITH CARD	 <b>J-Basket Japanese Style Noodle Soup Fresh Udon</b> 8.28 oz. <b>2/\$5</b> WITH CARD	 <b>Yamamotoyama Tea Bags</b> 16 count Selected Varieties <b>2<sup>99</sup></b> WITH CARD
 <b>Shirakiku Panko Bread Crumbs</b> Fine or Flakes - 4.02 oz. <b>4/\$5</b> WITH CARD  <b>Mochiko Sweet Rice Flour</b> 16 oz. <b>2/\$4</b> WITH CARD	 <b>Nissin Cup Noodles</b> 2.25 oz. Selected Varieties <b>99¢</b> WITH CARD	 <b>Kikkoman Soup Mix</b> 0.63 - 1.05 oz. Selected Varieties <b>2/\$5</b> WITH CARD	 <b>House Foods Vermont Curry Mix</b> 4.05 oz. Selected Varieties <b>2/\$6</b> WITH CARD
	 <b>Nissin Chow Mein Noodles</b> 4 oz. Selected Varieties <b>3/\$5</b> WITH CARD	 <b>Family 100% Pure Sesame Oil</b> 6 oz. <b>2<sup>59</sup></b> WITH CARD <b>Shiitake Mushrooms</b> Whole or Sliced 5 oz. <b>5<sup>49</sup></b> WITH CARD	 <b>Shirakiku Kogai-Ajitsuke Seasoned Baby Clams</b> 5.99 oz. <b>3<sup>99</sup></b> WITH CARD

 <b>Green Giant Cut Green Beans, Corn or Sweet Peas</b> 14.5 - 15.25 oz. Selected Varieties <b>2/\$4</b> WITH CARD	 <b>Prego Italian Sauce</b> 24 oz. Selected Varieties <b>2/\$7</b> WITH CARD	 <b>Oroweat Bread</b> 1 lb. 8 oz. Selected Varieties <b>6<sup>99</sup></b> WITH CARD	 <b>Hart Authentic Frozen Meal</b> 32 oz. Selected Varieties <b>5<sup>99</sup></b> WITH CARD
 <b>Campbell's Chunky Soup</b> 18.6 - 18.8 oz. Selected Varieties <b>2/\$6</b> WITH CARD	 <b>Beach Cliff Fish Steaks</b> 3.75 oz. Selected Varieties <b>4/\$5</b> WITH CARD  <b>Bumble Bee Crabmeat</b> Dr. wt. 4.25 oz. <b>2<sup>99</sup></b> WITH CARD	 <b>Smucker's Preserves or Marmalade</b> 18 oz. Selected Varieties <b>2/\$8</b> WITH CARD	 <b>Lunchables</b> 8.9 - 10.7 oz. Selected Varieties <b>2/\$5</b> WITH CARD
	 <b>Starkist Chunk Light Tuna</b> in Water or in Vegetable Oil 5 oz. <b>99¢</b> WITH CARD	 <b>Del Monte Fruits</b> 15.25 oz. Selected Varieties <b>2/\$5</b> WITH CARD	 <b>Reser's Baja Cafe Burrito</b> 5 oz. Selected Varieties <b>4/\$5</b> WITH CARD

 <b>Lion Coffee Instant Coffee</b> Original Roast or Vanilla Macadamia 8 count <b>3<sup>99</sup></b> WITH CARD Hawaiian Isles Coffee Roasters Co. Coffee 8 oz. Selected Varieties <b>8<sup>99</sup></b> WITH CARD <i>Select items contain 90% foreign-grown coffee</i>	 <b>Nabisco Wheat Thins</b> 8 - 8.5 oz. Selected Varieties or <b>Chicken In A Biskit</b> Original or Ranch - 7.5 oz. <b>2/\$7</b> WITH CARD  <b>Tate's Bake Shop Cookies</b> 7 oz. Selected Varieties <b>2/\$9</b> WITH CARD	 <b>Loacker Thins</b> - 5.29 oz. or <b>Crispy Wafers</b> - 5.29 - 6.17 oz. Selected Varieties <b>2/\$6</b> WITH CARD	 <b>Japan Crate Magna Box</b> 36.16 oz. <b>29<sup>99</sup></b> WITH CARD
---	---	--	---

 <b>Nestle Coffeemate Creamer</b> Original or Fat Free Original 16 oz. <b>3<sup>99</sup></b> WITH CARD	 <b>Hawaiian Host Paradise Delights</b> 17 oz. <b>15<sup>99</sup></b> WITH CARD	 <b>Hershey's Candy</b> 1.4 - 2 oz. Selected Varieties <b>4/\$5</b> WITH CARD 7.37 - 7.56 oz. giant bar Selected Varieties <b>3<sup>99</sup></b> WITH CARD	 <b>Milkita Candy</b> 3.52 - 4.23 oz. Selected Varieties <b>2/\$6</b> WITH CARD
---	--	---	--

 <b>Hostess Snacks or Bakery Classics</b> 1 - 6 count Selected Varieties <b>2<sup>79</sup></b> WITH CARD	 <b>Mauna Loa Macadamias</b> 4 - 5 oz. cup Selected Varieties <b>6<sup>49</sup></b> WITH CARD Dry Roasted Unsalted or Hawaiian Sea Salt 6 oz. jar <b>8<sup>49</sup></b> WITH CARD	 <b>Hershey's Candy</b> 3.1 - 7 oz. peg bag Selected Varieties <b>2<sup>79</sup></b> WITH CARD Zero Sugar 3 - 5 oz. peg bag Selected Varieties <b>3<sup>49</sup></b> WITH CARD	<b>10 for \$10</b> WITH CARD good thru 5/24
--	---	--	--

 <b>Shirakiku Dorayaki</b> Regular or with Chestnuts 9.7 oz. <b>4<sup>29</sup></b> WITH CARD	 <b>Hawaiian Sun Assorted Macadamia Nut Tote</b> 11.85 oz. <b>18<sup>99</sup></b> WITH CARD	 <b>*Mars M&amp;M's Grab n Go Candy</b> Peanut or Milk Chocolate 5 oz. <b>*Starburst</b> 8 oz. stand-up bag <b>*Skittles</b> 9 oz. stand-up bag <b>2/\$6</b> WITH CARD
---	---	---

 <b>Jell-O Gelatin or Pudding</b> 4 count Selected Varieties <b>2/\$5</b> WITH CARD Found in the Fridge	 <b>Voortman Wafers</b> 9 - 10.6 oz. Selected Varieties <b>2/\$9</b> WITH CARD	 <b>Albanese Gummies</b> 7.75 - 9 oz. Selected Varieties <b>3<sup>99</sup></b> WITH CARD	 <b>*Magi Planet Popcorn</b> 0.63 oz. Selected Varieties  <b>*Diamond Bakery Cookies or Crackers</b> 1.8 oz. Selected Varieties  <b>*Mrs. Fields Cookie</b> 2.1 oz., Selected Varieties  <b>*Walkers Pure Butter Shortbread</b> 2 count Selected Varieties  <b>*Family Tea Bags</b> 20 count Selected Varieties
---	---	---	---





**Pepsi Products**  
Twelve 12 oz. cans

Selected  
Varieties

**5<sup>99</sup>** WITH CARD



**Monster  
Energy Drink**  
16 oz.  
Selected Varieties

**3/6<sup>75</sup>** WITH CARD



**Coca-Cola  
Products**  
Twelve 12 oz. cans  
Selected Varieties

**8<sup>29</sup>** WITH CARD



**Aquafina  
Purified Water**  
Twenty-four  
16.9 oz. bottles

**7<sup>99</sup>** WITH CARD



**Lion  
Cold Brew  
Coffee**  
11 oz.  
Selected Varieties

**2/\$4** WITH CARD



**Gatorade  
Thirst Quencher**  
28 oz.  
Selected Varieties

**2/\$4** WITH CARD



**Reign  
Energy Drink**  
16 oz.  
Selected Varieties

**3/\$6** WITH CARD



**Glaceau  
Vitamin Water**  
20 oz.  
Selected Varieties

**2/\$4** WITH CARD



**Reign Storm  
Energy Drink**  
12 oz.  
Selected Varieties

**2/4<sup>50</sup>** WITH CARD



**Powerade  
Sports Drinks**  
Eight 20 oz.  
bottles  
Selected Varieties

**6<sup>99</sup>** WITH CARD



**Bang  
Energy Drink**  
16 oz.  
Selected Varieties

**3/\$6** WITH CARD



**Samurai  
Popcorn**  
5 - 8 oz.  
Selected Varieties

**4<sup>49</sup>** WITH CARD



**Munchies**  
Cheese Fix or Flamin' Hot  
8 oz.  
**2/\$8** WITH CARD

**Simply Snacks**  
7.5 - 8.5 oz.  
**2/\$9** WITH CARD



**Wonderful  
Pistachios**  
2.25 - 2.5 oz.  
Selected Varieties

**2/\$6** WITH CARD  
**4<sup>99</sup>** WITH CARD



**Gold Emblem  
Jerky**  
2.85 oz.  
Selected Varieties

**3<sup>99</sup>** WITH CARD



**Well Market  
Deluxe  
Mixed Nuts**

8 oz.  
Selected Varieties  
**4<sup>99</sup>** WITH CARD



**Takis Chips**  
8 - 9.9 oz.  
Selected Varieties

**4<sup>99</sup>** WITH CARD



**Tao Kae Noi  
Hi Tempura**  
Spicy or Original  
1.41 oz.

**2/3<sup>50</sup>** WITH CARD



**Calbee  
Harvest Snaps**  
3 - 3.3 oz.  
Selected Varieties

**2/\$5** WITH CARD



**Keebler  
Sandwich  
Crackers**  
8 count  
Selected Varieties

**3<sup>79</sup>** WITH CARD



**Kameda Rice Crackers**  
3.8 - 4.92 oz.

Selected Varieties  
**2/\$7** WITH CARD

**Takuma  
Shokuhin Snacks**

1.26 - 1.65 oz.  
Selected Varieties  
**3<sup>79</sup>** WITH CARD



**Island Munchies  
Jumbo  
Shrimp Chips**  
Regular or Furikake  
4 oz.

**5<sup>79</sup>** WITH CARD



**Chao Siam  
Fried Pork  
Skins or  
Snouts**  
2 - 3.17 oz.  
Selected Varieties

**6<sup>99</sup>** WITH CARD



**Vornado  
Whole Room  
Air Circulator**  
Black or White  
#533

**49<sup>99</sup>** WITH CARD

**Oscillating  
Tower Circulator**

**99<sup>99</sup>** WITH CARD

#OSC84



**CVS  
Alkaline Batteries**  
\*AA16, AAA16, C8, D8 or 9V4  
\*Max - AA12 or AAA12

**9<sup>99</sup>** WITH CARD



**Dorcy  
LED  
Floating  
Lantern,  
Headlamp,  
Lantern or  
Flashlight**

**5<sup>99</sup>**

WITH CARD



**Flora-Dec  
Graduation**  
Selected Varieties

**25% OFF**

WITH CARD



**House To  
Home  
12 in.  
Oscillating  
Table Fan**

**18<sup>99</sup>**

WITH CARD



**Spring Toys**  
Selected Varieties

**25% OFF**

WITH CARD



**Stansport  
Tarp**  
8 ft. x 10 ft.

**9<sup>99</sup>**

WITH CARD

10 ft. x 12 ft.

**13<sup>99</sup>**

WITH CARD



**Kauhale Living  
Hawaiian  
Microwave  
Bowl Holder**

**2/\$8**

WITH CARD



7 in.

9 in.

**2/\$10**

WITH CARD



**House To  
Home  
16 in.  
Oscillating  
Pedestal Fan**  
Black or White

**22<sup>99</sup>**

WITH CARD



**Swim & Dive  
Products &  
Summer  
Beach Toys**  
Selected Varieties

**25% OFF**

WITH CARD



**Cutter  
Insect  
Repellents**  
Selected Varieties

**25% OFF**

WITH CARD



**Kauhale Living  
Hawaiian Fabric  
Clothespin Bag &  
Closet Organizer**

**5<sup>99</sup>**

WITH CARD



**Igloo  
Playmate Elite  
Cooler**  
16 qt. capacity

**22<sup>99</sup>**

WITH CARD



**Summer  
Footwear**  
Selected Varieties

**25% OFF**

WITH CARD



**Bug Bam  
Mosquito  
Band**  
2 count

**2/\$7**

WITH CARD



**Kauhale Living  
Hawaiian Fabric  
Washing  
Machine  
Cover**

**15<sup>99</sup>**

WITH CARD



**Igloo  
Wheelie Cool  
Cooler**  
38 qt. capacity

**38<sup>99</sup>** WITH CARD



**Sun & Sky  
Camp Chair  
Standard**  
Selected Varieties

**14<sup>99</sup>**

WITH CARD

**Deluxe**  
Selected Varieties

**16<sup>99</sup>**

WITH CARD



**Ranger Ready  
Repellent**  
Zero or  
Ranger Orange  
3.38 oz.

**7<sup>49</sup>**

WITH CARD



**Enoz  
Moth Balls**  
One lb.

**7<sup>49</sup>**

WITH CARD





**Duracell  
Coppertop  
Batteries**  
AA8, AAA8,  
C4, D4 or 9V2

**9<sup>49</sup>**

WITH CARD



**Pa'ina  
Snack Plates**  
30 count

**2/\$5**

WITH CARD

**Luau Plates**  
15 count,  
**Bowls or  
Lunch Plates**  
30 count

**2<sup>99</sup>**

WITH CARD



**Hefty Slider Bags**  
10 - 20 count

Selected  
Varieties

**2/\$4**

WITH CARD



**Purex  
Liquid  
Detergent**  
43.5 - 50 oz.  
Selected Varieties

**2/\$8**

WITH CARD



**Max Imports  
Yarn**  
Selected Varieties

**2/\$7**

WITH CARD



**Puffs  
Facial Tissue**  
Ultra Soft or  
Plus Lotion  
48 count

**1<sup>59</sup>**

WITH CARD



**Charmin  
Flushable  
Wipes**  
80 count

**4<sup>59</sup>**

WITH CARD



**Fantastik  
Cleaner**  
32 oz.  
Selected Varieties

**2<sup>99</sup>**

WITH CARD



**Max Imports  
Na Lei Lihilihi  
Braided Ribbon Lei**

Selected  
Varieties

**4<sup>49</sup>**

WITH CARD

**Ali'i/Nani  
Combo Lei**

Selected  
Varieties

**10<sup>99</sup>**

WITH CARD



**Meguiar's  
Car Care**  
Selected Varieties

**30% OFF**

WITH CARD



**Charmin  
Mega Roll  
Bathroom  
Tissue**  
6 count

**7<sup>99</sup>**

WITH CARD



**Windex  
Cleaner**  
23 oz.  
Selected Varieties

**4<sup>29</sup>**

WITH CARD



**Island  
Heritage  
Lei Kit**  
Selected Varieties

**2/\$8**

WITH CARD



**Treefrog  
Fresh Box  
Air Freshener**  
7.06 oz.  
Selected Varieties

**8<sup>29</sup>**

WITH CARD



**Clorox  
Bathroom  
Ultra Foamer**  
Rain Clean or  
Island Blossom  
16 oz.

**5<sup>99</sup>**

WITH CARD



**S.O.S  
Steel Wool  
Pads**  
Lemon or Regular  
10 count

**2/\$5**

WITH CARD



**King  
Citronella  
Mosquito Coils**

10 count

**1<sup>39</sup>**

WITH CARD

**Mosquito  
Coil Holder**

**4<sup>49</sup>**

WITH CARD



**The Absorber  
Drying Cloth**  
27 in. x 17 in.  
Selected Varieties

**11<sup>99</sup>**

WITH CARD



**Diamond Magic  
Water Spot &  
Stain Remover**  
16 oz.

**8<sup>99</sup>**

WITH CARD



**Clorox  
Handi Wipes  
Reusable Cloths**  
Heavy Duty - 3 count or  
Multi-Use - 6 count

**2/\$4**

WITH CARD





**Patron Silver Tequila or Don Julio Blanco Tequila**  
750 ml. **39<sup>99</sup>**

**Jameson Irish Whiskey**  
750 ml. **24<sup>99</sup>**  
Selected Varieties



**\*Grey Goose Vodka or Baileys Irish Cream Liqueur**  
750 ml., Selected Varieties **\*1800 Silver Tequila**  
750 ml. **25<sup>99</sup>**



**Ketel One Vodka**  
750 ml., Selected Varieties **23<sup>99</sup>**

**Jack Daniel's Whiskey or Crown Royal Blended Whisky**  
750 ml., Selected Varieties **22<sup>99</sup>**



**Meiomi Wine**  
750 ml., Selected Varieties **18<sup>99</sup>**

**Decoy Wine**  
Selected Varieties or **Tito's Handmade Vodka**  
750 ml. **17<sup>99</sup>**

**GET 10% OFF** when you buy 6 or more gift sets or bottles of wine and/or spirits  
Bottles 375 ml. or below are excluded

**Mix & match!** Selection, availability and pricing may vary by store and does not include applicable local, county, state or federal taxes. We reserve the right to limit quantities on all items. Regular retail prices quoted may vary in some stores. Beverage items are "+CRV" where required by law. Alcoholic beverages available only in licensed stores. All beer & wine sold at minimums where state law regulates pricing.

**\*Koloa Kauai Rum** - Selected Varieties  
**\*Johnnie Walker Black Label Blended Scotch Whisky**  
750 ml. **30<sup>99</sup>**

**Bulleit Whiskey**  
Bourbon or Rye - 750 ml. **26<sup>99</sup>**

**\*Cazadores Tequila**  
Blanco or Reposado  
**\*Ocean Vodka**  
750 ml. **24<sup>99</sup>**

**Kahlua Liqueur**  
Original or Salted Caramel  
750 ml. **23<sup>99</sup>**

**\*Daou Paso Robles Cabernet Sauvignon** - 750 ml.  
**\*Maker's Mark Bourbon Whiskey**  
750 ml. **22<sup>99</sup>**

**La Crema Sonoma Wine** - 750 ml.  
Pinot Noir Chardonnay **22<sup>99</sup> 16<sup>99</sup>**

**Black Box or Bota Box Wine**  
3 liters, Selected Varieties **19<sup>99</sup>**

**\*Captain Morgan Rum, Malibu Rum or Jim Beam Kentucky Straight Bourbon Whiskey**  
Selected Varieties

**\*La Marca Prosecco** - Regular or Rose  
**\*Jam Cellars Chardonnay, Erath Pinot Noir or Rodney Strong Chalk Hill Chardonnay Wine**  
750 ml. **15<sup>99</sup>**

**Josh Cellars Cabernet Sauvignon or Merlot** - 750 ml. **14<sup>99</sup>**

**Beringer Brothers Wine**  
Red Blend or Cabernet Sauvignon or 750 ml. **14<sup>49</sup>**

**\*Edna Valley Vineyards, Bacardi Puerto Rican Rum or Kim Crawford Marlborough**  
750 ml., Selected Varieties

**\*Evan Williams Kentucky Straight Bourbon Whiskey**  
Regular or Honey Reserve - 750 ml.

**\*Fleischmann's Regular Vodka**  
1.75 liters **13<sup>99</sup>**

**19 Crimes Wine**  
Cali Gold Sparkling  
750 ml. **13<sup>99</sup> 8<sup>99</sup>**  
750 ml. Selected Varieties

**\*Korbel California Champagne**  
Selected Varieties or **Korbel Prosecco**  
**\*Sauza Tequila** - Gold or Silver  
**\*Fireball Cinnamon Whisky or Southern Comfort**  
750 ml. **12<sup>99</sup>**

**\*Captain Morgan's Parrot Bay Rum, Imagery Wine, Risata or Wentz Vineyards Estate Grown**  
750 ml., Selected Varieties

**\*Black Velvet Canadian Whisky, Hess Select Cabernet Sauvignon Wine or 7 Deadly Zins Red Blend**  
750 ml. **11<sup>99</sup>**

**14 Hands Vineyards, Matua or Sterling Vintner's Collection Wine**  
750 ml. Selected Varieties **10<sup>99</sup>**

**Folie A Deux Ménage a Trois**  
Bourbon Barrels Cabernet Sauvignon  
750 ml. **10<sup>99</sup> 8<sup>99</sup>**  
750 ml. Selected Varieties

**Bolla Wine** - Selected Varieties, **Angeline Pinot Noir Wine or Early Times Kentucky Whisky**  
750 ml. **9<sup>99</sup>**

**Bogle Vineyards**  
750 ml., Selected Varieties **8<sup>89</sup>**

**Dark Horse Wine or Smoking Loon California Wine**  
750 ml., Selected Varieties **7<sup>99</sup>**

**Fetzer Wine or Robert Mondavi Private Selection**  
750 ml., Selected Varieties **6<sup>99</sup>**

**Barefoot California Wine, CK Mondavi and Family Wine or Yellow Tail Australia Wine**  
750 ml. Selected Varieties **5<sup>99</sup>**

**Sutter Home California Wine**  
750 ml., Selected Varieties **4<sup>99</sup>**



**Jose Cuervo Especial Tequila**  
Gold or Silver  
750 ml. **15<sup>99</sup>**

**Francis Coppola Diamond Collection Wine**  
750 ml., Selected Varieties **13<sup>99</sup>**



**\*Smirnoff Vodka or Stella Rosa**  
750 ml. Selected Varieties

**\*Kendall-Jackson Avant** - Chardonnay, Grand Reserve  
Low Calorie Chardonnay or Vintner's Reserve Chardonnay or Rose  
750 ml. **11<sup>99</sup>**



**New Amsterdam Vodka**  
Selected Varieties  
750 ml. **10<sup>99</sup>**

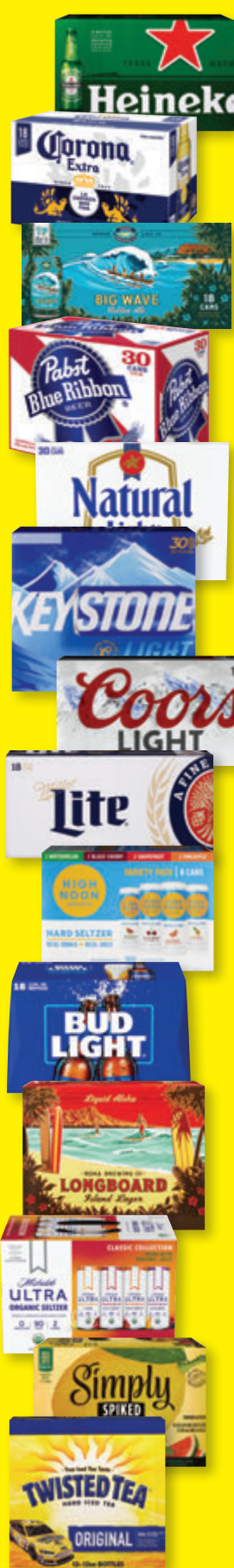
**Murphy Goode Wine**  
Selected Varieties  
750 ml. **9<sup>99</sup>**



**Apothic Wine or Clos du Bois North Coast Wine**  
750 ml., Selected Varieties **8<sup>99</sup>**

**Woodbridge by Robert Mondavi**  
750 ml., Selected Varieties **5<sup>99</sup>**





**\*Stella Artois Lager**  
Eighteen 11.2 oz. bottles

**\*Heineken Lager Beer**  
Original or Premium Light  
Eighteen 12 oz. bottles or Original  
Eighteen 12 oz. cans

**\*Corona Extra Beer**  
Eighteen 12 oz. bottles or cans

**\*Modelo Especial Beer**  
Eighteen 12 oz. cans

**\*Kona Brewing**  
Big Wave or Longboard  
Eighteen 12 oz. cans

**\*Pabst Blue Ribbon Beer**  
Thirty 12 oz. cans

**25<sup>99</sup>**

**Natural Beer**  
Ice or Light,  
**Rolling Rock Beer or Keystone Light Beer**  
Thirty 12 oz. cans

**23<sup>99</sup>**

**Coors Light or Miller Lite Beer**  
Fifteen 16 oz. aluminum bottles or Eighteen 12 oz. cans

**22<sup>99</sup>**

**High Noon**  
Eight 355 ml. cans  
Selected Varieties or  
**Budweiser Beer**  
Light - Eighteen 12 oz. bottles or  
Light or Regular  
Eighteen 12 oz. cans

**21<sup>99</sup>**

**\*Kona Brewing**  
Twelve 12 oz. bottles or cans  
Selected Varieties

**\*Michelob Ultra Seltzer**  
Classic or Signature Collection

**\*Nectar Seltzer**  
Variety Pack or Azuiki

**\*Corona Refresca, Simply Spiked Lemonade or Vizzy Hard Seltzer Variety Pack**  
Twelve 12 oz. cans

**\*Truly Berry Mix or Maui Mix Pack Hard Seltzer**  
Twelve 12 oz. cans

**\*Twisted Original Hard Iced Tea**  
Twelve 12 oz. bottles or cans

**19<sup>99</sup>**



**\*Truly Hard Seltzer**  
Selected Varieties

**\*The Beast Unleashed, Topo Chico Hard Seltzer or Maui Brewing Variety Pack**  
Twelve 12 oz. cans

**18<sup>99</sup>**

**\*Heritage Collection Beer**  
Twelve 11.2 oz. bottles

**\*Bud Light Seltzer or White Claw Hard Seltzer**  
Twelve 12 oz. cans  
Selected Varieties

**\*Beck's Regular German Beer**  
Twelve 12 oz. bottles

**17<sup>99</sup>**

**\*Steinlager Beer**  
Pure or Regular  
Twelve 11.15 oz. bottles

**\*Stella Artois Lager**  
Twelve 11.2 oz. bottles or cans

**\*Modelo Especial Beer**  
Selected Varieties

**\*Michelob Ultra**  
Regular or Pure Gold  
Twelve 12 oz. bottles or cans

**\*Bud Light Beer**  
Next - Twelve 12 oz. cans,  
Lime or Platinum  
Twelve 12 oz. bottles or cans

**16<sup>99</sup>**

**\*Jack Daniel's Perfect Mix**  
Four 355 ml. cans, Selected Varieties

**\*Cutwater Spirits**  
Four 12 oz. cans, Selected Varieties

**\*Coors Beer**  
•Light - Nine 16 oz. aluminum bottles or  
Twelve 12 oz. bottles  
•Light or Banquet - Twelve 12 oz. cans

**\*Miller Lite Beer**  
Nine 16 oz. aluminum bottles or  
Twelve 12 oz. bottles or cans

**\*Budweiser Beer**  
Light or Regular  
•Twelve 12 oz. bottles or cans  
•Twelve 16 oz. aluminum bottles

**\*O'Doul's Non-Alcoholic Brew**  
Twelve 12 oz. cans

**\*Sapporo Beer**  
Twelve 12 oz. cans

**15<sup>99</sup>**

**\*Crown Royal**  
Four 355 ml. cans  
Selected Varieties

**\*Kirin Ichiban Beer**  
Twelve 12 oz. bottles or cans

**\*Natural Ice Beer**  
Fifteen 12 oz. cans

**13<sup>99</sup>**



**\*Funny Water**  
Classic or Sweet & Spicy  
Twelve 12 oz. cans

**\*Pabst Blue Ribbon Beer**  
Twelve 12 oz. cans

**\*Keystone Light Beer**  
Fifteen 12 oz. cans

**12<sup>99</sup>**

**\*High Noon**  
Four 355 ml. cans  
Selected Varieties

**\*Maui Brewing**  
Big Swell or Bikini Blonde

**\*Waikiki Brewing Company**  
Eee Pah IPA or Aloha Spirit Blonde Ale  
Six 12 oz. cans

**\*Bud Ice Beer**  
Twelve 12 oz. bottles

**\*Rolling Rock Extra Pale Beer**  
Twelve 12 oz. cans

**11<sup>99</sup>**

**\*Jack Daniel's Country Cocktails**  
Six 10 oz. bottles  
Selected Varieties

**\*Ola Hard Seltzer**  
Selected Varieties or  
**Kona Spiked Tropical Punch Island Seltzer**  
Six 12 oz. cans

**10<sup>99</sup>**

**\*Smirnoff Ice Premium Malt Beverage**  
Selected Varieties

**\*Mike's Hard Lemonade**  
Cranberry or Lemonade

**\*Stella Artois Lager**  
Six 11.2 oz. bottles

**\*Maui or White Claw Hard Seltzer**  
Selected Varieties

**\*Sierra Nevada IPA Hazy Little Thing**  
Six 12 oz. cans

**9<sup>99</sup>**

**\*Maui Brewing**  
Coconut Porter or IPA  
Four 12 oz. cans

**\*Michelob Ultra Pure Gold**  
Six 12 oz. bottles

**8<sup>99</sup>**

**Soonhari or Jinro Soju**  
375 ml., Selected Varieties

**4<sup>99</sup>**