



"Make Longs a Part of Your Day"

Sale Sun., 5/25 - Sat., 5/31/25

at most OAHU LONGS DRUGS

Advertised items are available at participating locations

We accept all manufacturers' coupons, subject to manufacturer's restrictions.  
We reserve the right to limit sales to dealers, restaurants or institutions. General Excise Tax additional.  
Seasonal Merchandise is limited to stock on hand. Advertised items are available at participating locations.  
**LONGS 24-HOUR STORES:** Sale effective Sunday (5/25) 12:00 am thru Saturday (5/31) 12:00 midnight.  
Liquor items will be available for purchase from 6:00 am - 12:00 midnight.

Find *more* deals on **longs.com**



Follow us on Social Media



@LongsDrugsHI



**Summer Savings**  
Selected Varieties  
Sale items not included

**25% OFF**

WITH CARD



**Palm Corned Beef**  
11.5 oz.

**4<sup>99</sup>**

WITH CARD



**Hormel Spam**  
12 oz.  
Selected Varieties

**2/5<sup>50</sup>**

WITH CARD



**Fritos Dip**  
9 oz.  
Selected Varieties

**2/\$8**

WITH CARD

**Funyuns Onion Flavored Rings**

5.25 - 6 oz.,

**Cheetos** - 6.5 - 10 oz. or

**Fritos** - 9.25 - 10 oz.

**2/8<sup>50</sup>**

WITH CARD

Selected Varieties



**Nongshim Bowl Noodle Soup**  
3.03 oz.  
Selected Varieties

**3/\$5**

WITH CARD



**Hawaiian Tradition Extra Fancy Calrose Rice**  
15 lb.

**11<sup>99</sup>**

WITH CARD



**Scott's Comfort Plus Bathroom Tissue**  
Mega Roll - 6 count or Double Roll - 12 count

**4<sup>99</sup>**

WITH CARD



**Bausch+Lomb Eye Care & Vitamins**  
Selected Varieties

Buy 1, Get 1

**50% OFF\*\***

WITH CARD



**CVS Health Vitamins & Supplements**  
Selected Varieties

Buy 1, Get 1

**FREE\*\***

WITH CARD



**Hawaiian Sun Drinks**  
Six 11.5 oz. cans  
Selected Varieties

**2/\$7**

WITH CARD



**Aquafina Purified Water**  
Twenty-four 16.9 oz. bottles

**7<sup>99</sup>**

WITH CARD



**Coca-Cola Products**  
Twenty-four 12 oz. cans  
Selected Varieties

**13<sup>29</sup>**

WITH CARD



**High Noon**  
Eight 355 ml. cans  
Selected Varieties

**21<sup>99</sup>**

WITH CARD

**White Claw Hard Seltzer**  
Twelve 12 oz. cans

Selected Varieties

**17<sup>99</sup>**

WITH CARD



**Michelob Ultra**

Twenty-four 12 oz. cans

**26<sup>99</sup>**

WITH CARD

**Corona Beer or Heineken Lager Beer**

Twelve 12 oz. bottles or cans  
Selected Varieties

**16<sup>99</sup>**

WITH CARD



**\*Budweiser Beer**  
Light or Regular  
**\*Coors Beer**  
Light or Banquet  
**\*Miller Beer**  
Lite or 64  
Thirty 12 oz. cans

**28<sup>99</sup>**

WITH CARD

**9<sup>99</sup>**

WITH CARD

**Buy 3 Get  
\$4**

ExtraBucks® Rewards

**Garnier  
Nutrisse Color Creme**

Selected Varieties

ExtraBucks® Rewards  
offer limit of 1 per household with card.**L'Oreal  
Magic Root  
Cover Up**  
Selected Varieties**9<sup>99</sup>**

WITH CARD

**NYX  
Cosmetics**  
Selected Varieties

Buy 1, Get 1

**50% OFF\*\***

WITH CARD

**Olay or  
Old Spice  
Body Wash**  
18 or 22 oz.  
Selected Varieties**6<sup>99</sup>**

WITH CARD

**Clairol  
Natural Instincts  
Haircolor**  
Selected Varieties**6<sup>99</sup>**

WITH CARD

**L.A. Girl  
Cosmetics**  
Selected Varieties  
Available at select stores

Buy 1, Get 1

**50% OFF\*\***

WITH CARD

**Irish Spring  
Deodorant  
Soap**  
3 count  
Selected Varieties**3<sup>49</sup>**

WITH CARD

**La Roche-Posay  
Skincare &  
Suncare**

Selected Varieties

**20% OFF**

WITH CARD

**Suave  
Haircare**  
Selected Varieties

Buy 1, Get 1

**50% OFF\*\***

WITH CARD

**Sun Bum  
Suncare**  
Selected Varieties**20% OFF**

WITH CARD

**Safeguard  
Bar Soap**  
Beige or Aloe  
4 count**2/\$9**

WITH CARD

**\$10 ExtraBucks®** when you spend **\$30** on **ANY** of the **Neutrogena** products shown on this page.  
extrabucks® rewards are good for use on your next purchase. Offer limit of 1 per household with card. Other restrictions may apply.**Hydro Boost  
Serum**  
Hyaluronic Acid  
One oz. or  
Night Pressed  
1.7 oz.**17<sup>99</sup>**

WITH CARD

**Deep Clean  
Facial Cleanser** - 6.7 oz. or  
**Cream Cleanser** - 7 oz.**7<sup>49</sup>**

WITH CARD

**Deep Clean Scrub**  
Foaming or  
Oil Free  
4.2 oz. **7<sup>99</sup>**

WITH CARD

**Makeup Remover  
Cleansing Towelettes**  
Selected Varieties

25 count

**5<sup>99</sup>**

WITH CARD

**Eye Makeup  
Remover**  
5.5 oz. **7<sup>99</sup>**

WITH CARD

**Neutrogena  
Cosmetics,  
Haircare,  
Suncare,  
Face & Body  
Skincare**  
Selected Varieties  
Sale items not included**25% OFF**

WITH CARD

**Hydro Boost  
Hyaluronic Acid  
Water Gel**  
1.7 oz.**19<sup>99</sup>**

WITH CARD

**\*Oil-Free Acne Wash  
Daily Scrub**  
4.2 oz. or  
**Cream Cleanser**  
6.7 oz.**\*On-The-Spot  
Acne  
Treatment**  
0.75 oz. **7<sup>99</sup>**

WITH CARD

**Alcohol Free Toner**

8 oz.

**6<sup>99</sup>**

WITH CARD

**Fragrance-Free  
Liquid Cleanser**8 oz. **10<sup>99</sup>**

WITH CARD

**Sheer Zinc  
Mineral**  
SPF 50 - 3 oz.**11<sup>99</sup>**

WITH CARD

**Rapid Wrinkle  
Repair Retinol**  
Oil - One oz.,  
**Regenerating Cream**  
Regular or  
Fragrance Free  
1.7 oz.**25<sup>99</sup>**

WITH CARD

**Pink Grapefruit  
Acne Wash  
Foaming Scrub**  
4.2 oz.,  
**Facial Cleanser**  
6 oz. or  
**Body Wash** - 8.5 oz.**8<sup>49</sup>**

WITH CARD

**Transparent  
Facial Bar**  
Acne-Prone Skin,  
Fragrance-Free or  
Original Formula  
3.5 oz.**2<sup>99</sup>**

WITH CARD

**Mineral  
Ultra Sheer**  
SPF 30 - 3 oz.**13<sup>99</sup>**

WITH CARD

**CVS Health, Beauty 360 & Blade Razors, Trimmers & Cartridges**  
Selected Varieties

Buy 1, Get 1

**50% OFF\*\*** WITH CARD

Sold Exclusively at Longs!

**Curel & Jergens Bodycare**  
Selected Varieties

**20% OFF**  
WITH CARD

**Not Your Mother's Haircare**  
Selected Varieties

Buy 1, Get 1

**50% OFF\*\*** WITH CARD

**Mane 'n Tail Shampoo or Conditioner**  
32 oz.

**6<sup>49</sup>**  
WITH CARD

**Edge or Skintimate Shave Gel**  
7 oz.  
Selected Varieties

**2/\$8**  
WITH CARD

**Burt's Bees**  
Selected Varieties

Buy 1, Get 1

**50% OFF\*\*** WITH CARD

**O-P-I Nail Colors & Treatments**  
Selected Varieties

Buy 1, Get 1

**50% OFF\*\*** WITH CARD

**Hero Cosmetics, Acne & Facial Treatments**  
Selected Varieties

Buy 1, Get 1

**50% OFF\*\*** WITH CARD

**Crystal & Tom's of Maine Deodorants**  
Selected Varieties

Buy 1, Get 1

**50% OFF\*\*** WITH CARD

**Clean & Clear Skincare**  
Selected Varieties

Buy 1, Get 1

**50% OFF\*\*** WITH CARD

**Beauty 360 & CVS Health Facial Wipes, Towelettes & Cleansers**  
Selected Varieties

Buy 1, Get 1

**50% OFF\*\*** WITH CARD

Sold Exclusively at Longs!

**CVS Health Flossers, Picks & Gum Care**  
Selected Varieties

Buy 1, Get 1

**50% OFF\*\*** WITH CARD

**Oral-B Indicator Max Toothbrushes**  
Soft or Medium 2 count

**4<sup>99</sup>**  
WITH CARD

**Philips Sonicare**  
Selected Varieties

**20% OFF** WITH CARD

**CVS Health Denture Cleansers**  
Selected Varieties

Buy 1, Get 1

**50% OFF\*\*** WITH CARD

**CVS Health Support Aids**  
Selected Varieties

**20% OFF** WITH CARD

**Tiger Balm**  
Selected Varieties

Buy 1, Get 1

**50% OFF\*\*** WITH CARD

**Voltaren Arthritis Pain**  
50 - 150 grams  
Selected Varieties

**20% OFF** WITH CARD

**CVS Health Hot/Cold Therapy**  
Selected Varieties

Buy 1, Get 1

**50% OFF\*\*** WITH CARD

**CVS Health Digestive Probiotics**  
Selected Varieties

Buy 1, Get 1

**50% OFF\*\*** WITH CARD

**Nexium 24 Hr.**  
Capsules or Clear Minis  
42 count

**25<sup>99</sup>** WITH CARD

**\*Playtex Tampons**  
18 - 48 count  
**\*O.B. Tampons**  
40 count  
Selected Varieties

Buy 1, Get 1

**50% OFF\*\*** WITH CARD



**Crest &  
Oral-B  
Pro-Health  
Oral Care**  
Selected Varieties

Buy 1, Get 1  
**50% OFF\*\***  
WITH CARD



**Ricola  
Max Drops**  
34 count or  
**Drops**  
45 - 50 count  
Selected Varieties

**4<sup>99</sup>**  
WITH CARD



**Johnson &  
Johnson  
Bandages**  
Selected Varieties

Buy 1, Get 1  
**50% OFF\*\***  
WITH CARD



**Always  
Discreet  
\*Underwear**  
15 - 19 count or  
Boutique - 10 - 12 count  
Selected Varieties

**\*Pads**  
28 - 39,  
48 - 54 or 66 count  
Selected Varieties

**14<sup>99</sup>**  
WITH CARD

**Always Discreet Pads, Liners,  
Underwear & Boutique Underwear**  
Selected Varieties  
Sale items  
not included **20% OFF** WITH CARD



**Crest Plus Toothpaste**

Outlast or  
Minty Fresh  
5.4 oz. **4<sup>49</sup>** WITH CARD

Outlast or  
Deep Clean  
2 count **7<sup>99</sup>** WITH CARD



**Advil**  
80 - 200 count  
Selected Varieties

Buy 1, Get 1  
**50% OFF\*\***  
WITH CARD



**3M Nexcare**  
Selected Varieties

Buy 1, Get 1  
**40% OFF\*\***  
WITH CARD



**Pampers  
Wipes**  
56 - 72 count  
Selected Varieties

**2<sup>99</sup>** WITH CARD



168 - 216 count  
Selected Varieties

**7<sup>99</sup>** WITH CARD



**TheraBreath  
Oral Care**  
Selected Varieties

**25% OFF**  
WITH CARD



**Claritin Allergy**  
Selected Varieties  
Pseudoephedrine  
not included

**20% OFF**  
WITH CARD



**Benadryl  
Itch Stopping Cream**  
Extra Strength or Original Strength

One oz. **5<sup>99</sup>** WITH CARD

**Neosporin  
Cream or Ointment**  
0.5 oz.  
Selected Varieties **6<sup>99</sup>** WITH CARD



**Swaddlers or  
Baby-Dry  
Diapers**  
19 - 32 count  
Selected Varieties

**10<sup>99</sup>** WITH CARD

Aqua Pure not included



**Imodium,  
Pepcid &  
Dulcolax**  
Selected Varieties

Buy 1, Get 1  
**50% OFF\*\***  
WITH CARD



**Astepro Allergy**  
Adult or Children's  
60 doses

**14<sup>99</sup>** WITH CARD

120 doses  
**23<sup>99</sup>** WITH CARD



**Phiten Titanium  
Precut Strips Power Tape**

15 count **9<sup>99</sup>** WITH CARD

**Phiten**  
Selected Varieties  
Sale items  
not included **20% OFF** WITH CARD



**Johnson's  
Baby Toiletries**  
Selected Varieties

Buy 1, Get 1  
**50% OFF\*\***  
WITH CARD



**Gas-X &  
Benefiber**  
Selected Varieties

Buy 1, Get 1  
**50% OFF\*\***  
WITH CARD



**Alcon  
\*Clear Care  
Disinfecting Solution**  
HydraGlyde or  
Triple Action  
\*Opti-Free  
Disinfecting Solution  
2 count

**17<sup>99</sup>** WITH CARD



**U.S. Jaclean  
Bamboo Vinegar  
Detox Patches**

8 count **9<sup>99</sup>** WITH CARD

32 count  
**24<sup>99</sup>** WITH CARD



**Q-Tips  
Cotton Swabs**  
500 count

**2/\$9**  
WITH CARD



**Nutella  
B-Ready**

2 count

**2/\$3** WITH CARD

6 count

**2/\$7** WITH CARD



**Darigold  
\*Milk  
\*Old Fashioned  
Chocolate Milk**

64 oz., Selected Varieties

**579** WITH CARD

**Lactose Free Milk**

64 oz.

**629** WITH CARD

Selected Varieties



**Kikkoman  
Soup Mix**

0.63 - 1.05 oz.  
Selected Varieties

**2/\$5**

WITH CARD

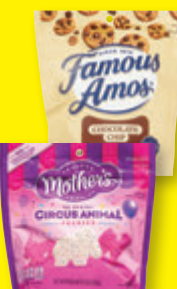


**Shirakiku  
Cooked  
Rice**

3 count

**499**

WITH CARD



**\*Mother's Cookies**  
Circus Animal or  
Mythical Creatures  
**\*Famous Amos  
Chocolate Chip  
Cookies**

9 oz.

**2/\$8**

WITH CARD



**Quaker Oats**  
Old Fashioned or  
Quick 1-Minute

18 oz.

**2/\$9**

WITH CARD



**Acecook  
Oh Ricey Pho Noodles**  
Beef or Chicken - 2.5 oz. bag

**5/\$5** WITH CARD



Beef or Chicken  
2.5 oz. bowl

**3/\$5** WITH CARD



**Shirakiku  
Teriyaki Nori**

0.8 oz.

**499**

WITH CARD



**Sanritsu  
Couque D'asses**  
3.17 - 3.25 oz.  
Selected Varieties

**2/\$5**

WITH CARD



**Hostess  
Snack or  
Bakery Classics**  
1 - 6 count  
Selected Varieties

**279**

WITH CARD



**Betty Crocker  
Mashed Potatoes**  
4 oz., Selected Varieties

**4/\$5** WITH CARD

**Potatoes**  
Au Gratin or Scalloped

4 oz.

**2/450** WITH CARD



**Lee Kum Kee  
Oyster  
Flavored  
Sauce**

17 oz.

**169**

WITH CARD



**Toggi Chocolate Wafers**  
1.75 oz.  
Selected Varieties

**169** WITH CARD



**Kasugai  
Roasted  
Peas or Nuts**  
2.01 - 2.57 oz.  
Selected Varieties

**2/\$3**

WITH CARD



**Del Monte  
Fruits**  
15.25 oz.  
Selected Varieties

**2/\$5**

WITH CARD



**Lee Kum Kee  
Siracha Mayo**  
15 oz. or  
**Siracha  
Chili Sauce**

18 oz.

**399**

WITH CARD



**Bumbles  
Honeycomb  
Candy**  
Original or Dark  
11 oz.

**399**

WITH CARD



**Milkita  
Candy**  
3.52 - 4.23 oz.  
Selected Varieties

**2/\$6**

WITH CARD



**Enjoy  
Premium  
Dried Fruits**  
2 - 3.5 oz.  
Selected Varieties

**239**

WITH CARD



**Morton Salt**  
Coarse Kosher  
16 oz.,  
Plain or Iodized  
26 oz.

**2/\$3**

WITH CARD

**Hershey's Candy**  
1.4 - 2 oz.  
Selected Varieties  
**4/\$5** WITH CARD

3.1 - 7 oz. peg bag  
Selected Varieties  
**279** WITH CARD

**Nabisco Toasted Chips**  
7.1 - 8.1 oz.  
Selected Varieties  
**2/\$8** WITH CARD

**Oreo**  
10.68 - 18.71 oz.  
family size  
Selected Varieties  
**2/\$9** WITH CARD

**Diamond Bakery Hawaiian Biscuits**  
4 oz., Selected Varieties or  
**Cookies or Crackers**  
4.5 oz., Selected Varieties  
**2/\$5** WITH CARD

**Crackers**  
Selected Varieties  
**999** WITH CARD

30 oz.

**Lion Coffee**  
24 oz.  
Selected Varieties  
Select items contain  
90% foreign-grown coffee  
**1699** WITH CARD

**M&M's Chocolate Candy**  
7.4 - 10.05 oz.  
sharing size or  
**Mars Minis**  
8.9 - 9.7 oz.  
sharing size  
Selected Varieties  
**549** WITH CARD

**Keebler Fudge Cookies or Sticks**  
8.5 - 12.5 oz.  
Selected Varieties  
**2/\$8** WITH CARD

**Hawaiian Host Paradise Delights**  
17 oz.  
**1599** WITH CARD

**Kauai Coffee 100% Hawaiian Coffee**  
7 oz.  
Selected Varieties  
**1399** WITH CARD

**10 for \$10** WITH CARD  
good thru 7/5

**\*Love Corn**  
0.7 oz.  
Selected Varieties

**\*Blue Diamond Almonds**  
1.5 oz.  
Selected Varieties

**\*Regent Snacks**  
2.12 oz.  
Selected Varieties

**\*Moon Pie**  
Chocolate or Vanilla  
2.75 oz.

**\*Rico Bubble Tea**  
12.3 oz.  
Selected Varieties

**Lotus Biscoff Cookies**  
10 count  
**399** WITH CARD

**Mauna Loa Macadamias**  
4 - 5 oz. cup  
Selected Varieties  
**649** WITH CARD

**Dry Roasted** - 6 oz. jar  
Hawaiian Sea Salt or Unsalted  
**849** WITH CARD

**Blue Diamond Almond Breeze Milk or Planet Oat Oatmilk**  
32 oz.  
Selected Varieties  
**2/\$6** WITH CARD

**Hiyoshi Dorayaki**  
5 count  
Selected Varieties  
**499** WITH CARD

**Aloha Gourmet Peanut Cake**  
Chewy or Crunchy  
8 oz.  
**279** WITH CARD

**Blue Bunny Ice Cream**  
46 - 48 oz.  
Selected Varieties  
**499** WITH CARD

**Storck Candy**  
2.75 - 5.5 oz.  
Selected Varieties  
**2/\$5** WITH CARD

**Coffee Rio Candy**  
3 - 5.5 oz.  
Selected Varieties  
**2/\$5** WITH CARD

**Astronaut Ice Cream**  
1 - 1.1 oz.  
Selected Varieties  
**499** WITH CARD

**\$5 ExtraBucks® Rewards when you spend \$20 on ANY of the Kraft/Heinz products shown on this page.**  
extrabucks® rewards are good for use on your next purchase. Offer limit of 1 per household with card. Other restrictions may apply.

**Heinz Vinegar**  
Apple Cider Distilled White  
32 oz.  
**3/\$5** WITH CARD

**Kraft Mac & Cheese Dinner**  
Original or Thick 'n Creamy  
7.25 oz. box  
**4/\$5** WITH CARD

Original - 4 count cup  
**499** WITH CARD

**Yuban Ground Coffee**  
Dark Roast  
25.3 oz. or Traditional Roast  
27.9 oz.  
**999** WITH CARD

**HOT PRICE!**  
While Supplies Last!  
Sorry, No Rainchecks.  
**Classico Pasta Sauce**  
15 - 24 oz.  
Selected Varieties  
**2/\$4** WITH CARD

**Grey Poupon Dijon Mustard**  
10 oz.  
**2/\$6** WITH CARD

**Lea & Perrins Worcestershire Sauce**  
10 oz.  
**399** WITH CARD

**Kraft Deluxe Homestyle Mac & Cheese**  
Four Cheese or Original Cheddar  
12 oz.  
**2/\$6** WITH CARD

**Oscar Mayer Wieners**  
16 oz.  
Selected Varieties  
**2/\$6** WITH CARD

**Oscar Mayer Bacon**  
16 oz.  
Selected Varieties  
**699** WITH CARD

**Ore-Ida Potatoes**  
30 - 32 oz.  
Selected Varieties  
**499** WITH CARD

**Lunchables Crispy Grilled Cheesies**  
Original or Pepperoni Pizza  
2 count  
**2/\$7** WITH CARD

**Kraft Singles**  
10.7 - 12 oz.  
Selected Varieties  
**2/\$7** WITH CARD

**Oscar Mayer Deli Fresh Meat**  
7 - 9 oz.  
Selected Varieties  
**499** WITH CARD

**General Mills \*Cereal**  
14.9 - 16.8 oz. large size  
Selected Varieties  
**\*Cheerios Protein Cereal**  
Strawberry or Cinnamon  
11.2 oz.  
**2/\$8** WITH CARD

**Love's Royal Hearth Bread**  
24 oz.  
Selected Varieties  
**649** WITH CARD

**Del Monte Spinach**  
13.5 oz. or Sliced Beets  
14.5 oz.  
**3/\$5** WITH CARD

**Hormel Compleats**  
9 - 10 oz.  
Selected Varieties  
**2/\$6** WITH CARD

**Garlic**  
3 count  
**219** WITH CARD

**Ginger**  
One lb.  
**429** WITH CARD

**Lotus Biscoff Cookie Butter**  
Crunchy - 13.4 oz. or Regular - 14.1 oz.  
**2/\$9** WITH CARD

**Lawry's Chili Mix**  
1.48 oz. or Spaghetti Sauce Mix  
1.5 oz.  
**4/\$5** WITH CARD

**Mary Kitchen Corned Beef Hash**  
14 oz.  
**2/\$7** WITH CARD

**Avocados**  
4 count  
**629** WITH CARD

**Okinawan Sweet Potatoes**  
3 lb.  
**849** WITH CARD

**Kewpie Dressing**  
8 oz.  
Selected Varieties  
**499** WITH CARD

**Lawry's Garlic Salt**  
11 oz.  
**449** WITH CARD

**Campbell's Chunky Soup**  
18.6 - 18.8 oz.  
Selected Varieties  
**2/\$6** WITH CARD



**Pepsi Products**  
2 liters  
Selected Varieties  
**2/\$4**  
WITH CARD



**Menehune Water**  
Purified or  
Steamed Distilled  
One gallon  
**2/\$7**  
WITH CARD



**Pepsi Products**  
Twelve 12 oz. cans  
Selected Varieties  
**5<sup>99</sup>** WITH CARD



**Gatorade Thirst Quencher**  
28 oz.  
Selected Varieties  
**2/\$4**  
WITH CARD



**Lion Cold Brew Coffee**  
11 oz.  
Selected Varieties  
**2/\$4**  
WITH CARD



**Coca-Cola Products**  
Ten 7.5 oz. cans  
Selected Varieties  
**2/\$9** WITH CARD



**Powerade Drink**  
28 oz.  
Selected Varieties  
**4/\$5**  
WITH CARD



**Starbucks Frappuccino**  
13.7 oz.  
Selected Varieties  
**2/\$6**  
WITH CARD



**Capri Sun Drinks**  
10 count  
Selected Varieties  
**3<sup>50</sup>**  
WITH CARD



**Body Armor Drink**  
16 oz.  
Selected Varieties  
**4/\$5**  
WITH CARD



**Celsius Sparkling Drink**  
12 oz.  
Selected Varieties  
**2/\$4**  
WITH CARD



**California Jerky Factory**  
**Crispy Beef Jerky**  
Original or Teriyaki  
3 oz.  
**11<sup>99</sup>**  
WITH CARD



**Nongshim**  
**Rings or Crackers**  
1.76 - 2.6 oz.  
Selected Varieties  
**2/\$3**  
WITH CARD



**HOT PRICE!**  
*While Supplies Last!  
Sorry, No Rainchecks.*  
**Juantonio's Tortilla Chips**  
15 oz.  
**4<sup>99</sup>** WITH CARD



**Frito Lay Chips**  
1.75 - 4.125 oz.  
Selected Varieties  
**2/\$5** WITH CARD



**Maui Style Potato Chips**  
6 oz., Selected Varieties or  
**Shrimp Chips**  
4.5 oz.  
**2/\$6** WITH CARD



**Kaimana Ahi Tuna Jerky**  
10 count  
variety pack  
**12<sup>99</sup>**  
WITH CARD



**Tochi Popcorn**  
2.8 oz.  
Selected Varieties  
**3<sup>99</sup>**  
WITH CARD



**Maebo's One-Ton Chips**  
4 oz.  
**3<sup>99</sup>**  
WITH CARD



**Planters Flavored Peanuts**  
6 oz., Selected Varieties  
**1<sup>39</sup>** WITH CARD



**Chex Mix**  
Cheddar or  
Traditional  
10 count  
multipack  
**4<sup>99</sup>**  
WITH CARD



**Gardetto's Snack Mix**  
8 - 8.6 oz.  
Selected Varieties  
**2/\$6**  
WITH CARD



**Well Market Deluxe Mixed Nuts**  
16 oz.  
Selected Varieties  
**8<sup>99</sup>** WITH CARD  
*Sold Exclusively at Longs!*



**Dry Roasted Pistachios**  
12.75 oz.  
**6<sup>99</sup>** WITH CARD



**Rubbermaid Housewares**  
Selected Varieties  
Sale items not included

**30% OFF**  
WITH CARD



**Brita**  
Selected Varieties

**30% OFF**  
WITH CARD



**CVS Alkaline Batteries**  
\*AA16, AAA16, C8, D8 or 9V4

**9<sup>99</sup>**  
WITH CARD  
\*Max AA12 or AAA12



**3M Scotch-Brite Reusable Wipes**  
5 count

**1<sup>29</sup>**  
WITH CARD



**Scrub Dots Scrub Sponge**  
Non-Scratch or Heavy Duty  
3 count

**2<sup>99</sup>**  
WITH CARD



**Rubbermaid TakeAlongs**  
2 - 5 count  
Selected Varieties

**3<sup>99</sup>**  
WITH CARD

\*Serving Bowls  
15.7 cup capacity  
#7A98 - 2 count

**6<sup>49</sup>**  
WITH CARD  
\*Large Rectangles  
1.1 gallon capacity  
#7A96 - 2 count



**Rubbermaid Dishpan**  
11.4 quart capacity  
#2951

**5<sup>99</sup>**  
WITH CARD



**Joy Ultra Concentrated Dish Liquid**  
12.6 oz.

**2<sup>19</sup>**  
WITH CARD



**Chore Boy Scrubber**  
Single count

**2/\$3**  
WITH CARD



**Ultimate Scrubbers**  
Stainless Steel or Copper

**2<sup>99</sup>**  
WITH CARD  
2 count



**Rubbermaid Easy Release Ice Cube Tray**  
#2867 - Single count

**3<sup>79</sup>**  
WITH CARD



**Rubbermaid Neat 'n Tidy Bucket**  
11 quart capacity  
#2963

**7<sup>99</sup>**  
WITH CARD



**Bounce Dryer Sheets**  
80 count  
Selected Varieties or Mega  
60 count

**5<sup>49</sup>**  
WITH CARD



**Wet Ones Hand Wipes**  
20 count  
Selected Varieties

**2/\$3**  
WITH CARD



**Rubbermaid Ice Cube Bin**  
#2862

**7<sup>99</sup>**  
WITH CARD



**Puffs Facial Tissues**  
Ultra Soft or Plus Lotion  
48 count

**1<sup>59</sup>**  
WITH CARD



**X-14 Toilet Bowl Cleaner**  
Blue - 1.6 oz. or Bleach - 1.7 oz.

**1<sup>59</sup>**  
WITH CARD



**Libman Tornado Mop & Refill**

**30% OFF**  
WITH CARD



**Max Imports Na Lei Lihilihi Braided Ribbon Lei**  
Selected Varieties

**4<sup>49</sup>**  
WITH CARD

**Alii/Nani Combo Lei**  
Selected Varieties

**10<sup>99</sup>**  
WITH CARD



**Febreze Car Air Freshener Vent Clips**  
2 count  
Selected Varieties

**2/\$11**  
WITH CARD



**The Drops Toilet Odor Eliminator**  
Citrus Bubble or Fresh Lavender  
0.41 oz.

**3<sup>69</sup>**  
WITH CARD



**Term-Out Termite Spray**  
13 oz.

**6<sup>99</sup>**  
WITH CARD



**Chinet**  
**\*Compartment Trays**  
 30 count  
**\*Large Bowls**  
 60 count value pack  
**\*Plates**  
 All Occasion  
 60 count or  
 Appetizer & Dessert  
 70 count

**7<sup>99</sup>** WITH CARD



**Glad**  
**Snack Bags**  
 50 count

**2/\$3** WITH CARD

**\*Storage Bags**  
 One gallon capacity - 20 count

**\*Sandwich Bags** - 50 count **2/\$4** WITH CARD



**Saran Plastic Wrap**  
 Premium - 100 sq. ft. or  
 Cling Plus - 200 sq. ft.

**2/\$5** WITH CARD



**Chinet**  
**All Occasion Premium Napkins**  
 90 count

**2<sup>99</sup>** WITH CARD



**Bounty**  
**Double Roll Select-A-Size Paper Towels**  
 6 count

**16<sup>99</sup>** WITH CARD



**Dawn Platinum Powerwash Dish Spray**  
 16 oz.  
 Selected Varieties

**4<sup>99</sup>** WITH CARD



**Hefty**  
**Trash Bags**  
 40 count  
 Selected Varieties

**7<sup>99</sup>** WITH CARD



**Lysol**  
**Disinfectant Spray**  
 12.5 oz.  
 Selected Varieties

**5<sup>99</sup>** WITH CARD



**Persil**  
**Liquid Detergent**  
 34 - 40 oz.  
 Selected Varieties

**7<sup>99</sup>** WITH CARD



**Downy**  
**In-Wash Scent Booster**  
 Selected Varieties

**25% OFF** WITH CARD



**Duracell**  
**Coppertop Batteries**  
 AA8, AAA8, C4, D4 or 9V2

**9<sup>49</sup>** WITH CARD

## Summer Savings



**Sun & Sky Kids Camp Chair**  
 Hippo or Lady Bug

**13<sup>99</sup>** WITH CARD



**Vornado Oscillating Tower Circulator**  
 #OSCR37

**89<sup>99</sup>** WITH CARD



**Honeywell Turboforce Power Air Circulator**

**17<sup>99</sup>** WITH CARD



**HOT PRICE!**  
 While Supplies Last!  
 Sorry, No Rainchecks.

**House to Home**  
**16 in. Oscillating Pedestal Fan**

**18<sup>99</sup>** WITH CARD  
 Black or White



**Sun & Sky Standard Camp Chair**  
 Selected Varieties

**14<sup>99</sup>** WITH CARD



**Igloo Playmate Elite Cooler**  
 16 qt. capacity

**22<sup>99</sup>** WITH CARD



**Summer Footwear**  
 Selected Varieties

**25% OFF** WITH CARD



**Swim & Dive Products & Summer Beach Toys**  
 Selected Varieties

**25% OFF** WITH CARD



**Sun & Sky Deluxe Camp Chair**  
 Selected Varieties

**16<sup>99</sup>** WITH CARD



**Igloo Wheelie Cool Cooler**  
 38 qt. capacity

**38<sup>99</sup>** WITH CARD



**Spring Toys**  
 Selected Varieties

**25% OFF** WITH CARD



**Patron Silver Tequila or Don Julio Blanco Tequila**  
750 ml. **39<sup>99</sup>**

**Jameson Irish Whiskey**  
750 ml. **24<sup>99</sup>**  
Selected Varieties



**\*Grey Goose Vodka or Baileys Irish Cream Liqueur**  
750 ml., Selected Varieties **\*1800 Silver Tequila**  
750 ml. **25<sup>99</sup>**



**Ketel One Vodka**  
750 ml., Selected Varieties **23<sup>99</sup>**

**Jack Daniel's Whiskey or Crown Royal Blended Whisky**  
750 ml., Selected Varieties **22<sup>99</sup>**



**Meiomi Wine**  
750 ml., Selected Varieties **18<sup>99</sup>**

**Decoy Wine**  
Selected Varieties or **Tito's Handmade Vodka**  
750 ml. **17<sup>99</sup>**

**Save 10%**

when you fill this bag with 4 or more 375 ml or larger, bottles of wine and/or spirits priced \$10 or greater.  
Excludes items priced ending in 97c.

**Mix & match!**

Selection, availability and pricing may vary by store and does not include applicable local, county, state or federal taxes. We reserve the right to limit quantities on all items. Regular retail prices quoted may vary in some stores. Clearance items not included. Beverage items are "CRV" where required by law. Alcoholic beverages available only in licensed stores. All beer & wine sold at minimums where state law regulates pricing.

**\*Koloa Kauai Rum - Selected Varieties**  
**\*Johnnie Walker Black Label Blended Scotch Whisky**  
750 ml. **30<sup>99</sup>**

**Bulleit Whiskey**  
Bourbon or Rye - 750 ml. **26<sup>99</sup>**

**\*Cazadores Tequila**  
Blanco or Reposado **\*Ocean Vodka**  
750 ml. **24<sup>99</sup>**

**Kahlua Liqueur**  
Original or Salted Caramel 750 ml. **23<sup>99</sup>**

**\*Daou Paso Robles Cabernet Sauvignon - 750 ml.**  
**\*Maker's Mark Bourbon Whiskey** 750 ml. **22<sup>99</sup>**

**La Crema Sonoma Wine - 750 ml.**  
Pinot Noir Chardonnay **22<sup>99</sup> 16<sup>99</sup>**

**Black Box or Bota Box Wine**  
3 liters, Selected Varieties **19<sup>99</sup>**

**\*Captain Morgan Rum, Malibu Rum or Jim Beam Kentucky Straight Bourbon Whiskey**  
Selected Varieties

**\*La Marca Prosecco - Regular or Rose**  
**\*Jam Cellars Chardonnay, Erath Pinot Noir or Rodney Strong Chalk Hill Chardonnay Wine**  
750 ml. **15<sup>99</sup>**

**Josh Cellars Cabernet Sauvignon or Merlot - 750 ml.** **14<sup>99</sup>**

**Beringer Brothers Wine**  
Red Blend or Cabernet Sauvignon or 750 ml. **14<sup>49</sup>**

**\*Edna Valley Vineyards, Bacardi Puerto Rican Rum or Kim Crawford Marlborough**  
750 ml., Selected Varieties

**\*Evan Williams Kentucky Straight Bourbon Whiskey**  
Regular or Honey Reserve - 750 ml.

**\*Fleischmann's Regular Vodka**  
1.75 liters **13<sup>99</sup>**

**19 Crimes Wine**  
Cali Gold Sparkling 750 ml. **13<sup>99</sup> 8<sup>99</sup>**

**\*Korbel California Champagne**  
Selected Varieties or **Korbel Prosecco**  
**\*Sauza Tequila - Gold or Silver**  
**\*Fireball Cinnamon Whisky or Southern Comfort**  
750 ml. **12<sup>99</sup>**

**\*Captain Morgan's Parrot Bay Rum, Imagery Wine, Risata or Wentz Vineyards Estate Grown**  
750 ml., Selected Varieties

**\*Black Velvet Canadian Whisky, Hess Select Cabernet Sauvignon Wine or 7 Deadly Zins Red Blend**  
750 ml. **11<sup>99</sup>**

**14 Hands Vineyards, Matua or Sterling Vintner's Collection Wine**  
750 ml. **10<sup>99</sup>**

**Folie A Deux Ménage a Trois**  
Bourbon Barrels Cabernet Sauvignon 750 ml. **10<sup>99</sup> 8<sup>99</sup>**

**Bolla Wine - Selected Varieties, Angeline Pinot Noir Wine or Early Times Kentucky Whisky**  
750 ml. **9<sup>99</sup>**

**Bogle Vineyards**  
750 ml., Selected Varieties **8<sup>89</sup>**

**Dark Horse Wine or Smoking Loon California Wine**  
750 ml., Selected Varieties **7<sup>99</sup>**

**Fetzer Wine or Robert Mondavi Private Selection**  
750 ml., Selected Varieties **6<sup>99</sup>**

**Barefoot California Wine, CK Mondavi and Family Wine or Yellow Tail Australia Wine**  
750 ml. **5<sup>99</sup>**

**Sutter Home California Wine**  
750 ml., Selected Varieties **4<sup>99</sup>**



**Jose Cuervo Especial Tequila**  
Gold or Silver 750 ml. **15<sup>99</sup>**

**Francis Coppola Diamond Collection Wine**  
750 ml., Selected Varieties **13<sup>99</sup>**



**\*Smirnoff Vodka or Stella Rosa**  
750 ml. **11<sup>99</sup>**

**\*Kendall-Jackson Avant - Chardonnay, Grand Reserve**  
Low Calorie Chardonnay or Vintner's Reserve Chardonnay or Rose 750 ml.



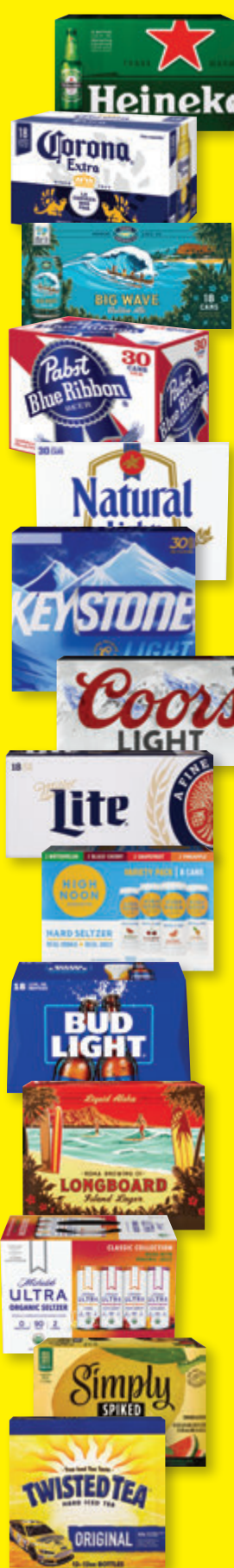
**New Amsterdam Vodka**  
Selected Varieties 750 ml. **10<sup>99</sup>**

**Murphy Goode Wine**  
Selected Varieties 750 ml. **9<sup>99</sup>**



**Apothic Wine or Clos du Bois North Coast Wine**  
750 ml., Selected Varieties **8<sup>99</sup>**

**Woodbridge by Robert Mondavi**  
750 ml., Selected Varieties **5<sup>99</sup>**



**\*Stella Artois Lager**  
Eighteen 11.2 oz. bottles

**\*Heineken Lager Beer**  
Original or Premium Light  
Eighteen 12 oz. bottles or Original  
Eighteen 12 oz. cans

**\*Corona Extra Beer**  
Eighteen 12 oz. bottles or cans

**\*Modelo Especial Beer**  
Eighteen 12 oz. cans

**\*Kona Brewing**  
Big Wave or Longboard  
Eighteen 12 oz. cans

**\*Pabst Blue Ribbon Beer**  
Thirty 12 oz. cans

**25<sup>99</sup>**

**Natural Beer**  
Ice or Light,  
**Rolling Rock Beer or Keystone Light Beer**  
Thirty 12 oz. cans

**23<sup>99</sup>**

**Coors Light or Miller Lite Beer**  
Fifteen 16 oz. aluminum bottles or Eighteen 12 oz. cans

**22<sup>99</sup>**

**High Noon**  
Eight 355 ml. cans  
Selected Varieties or  
**Budweiser Beer**  
Light - Eighteen 12 oz. bottles or  
Light or Regular  
Eighteen 12 oz. cans

**21<sup>99</sup>**

**\*Kona Brewing**  
Twelve 12 oz. bottles or cans  
Selected Varieties

**\*Michelob Ultra Seltzer**  
Classic or Signature Collection

**\*Nectar Seltzer**  
Variety Pack or Azuiki

**\*Corona Refresca, Simply Spiked Lemonade or Vizzy Hard Seltzer Variety Pack**

**\*Truly Berry Mix or Maui Mix Pack Hard Seltzer**  
Twelve 12 oz. cans

**\*Twisted Original Hard Iced Tea**  
Twelve 12 oz. bottles or cans

**19<sup>99</sup>**



**\*Truly Hard Seltzer**  
Selected Varieties

**\*The Beast Unleashed, Topo Chico Hard Seltzer or Maui Brewing Variety Pack**  
Twelve 12 oz. cans

**18<sup>99</sup>**

**\*Heritage Collection Beer**  
Twelve 11.2 oz. bottles

**\*Bud Light Seltzer or White Claw Hard Seltzer**  
Twelve 12 oz. cans  
Selected Varieties

**\*Beck's Regular German Beer**  
Twelve 12 oz. bottles

**17<sup>99</sup>**

**\*Steinlager Beer**  
Pure or Regular  
Twelve 11.5 oz. bottles

**\*Stella Artois Lager**  
Twelve 11.2 oz. bottles or cans

**\*Modelo Especial Beer**  
Selected Varieties

**\*Michelob Ultra**  
Regular or Pure Gold  
Twelve 12 oz. bottles or cans

**\*Bud Light Beer**  
Next - Twelve 12 oz. cans,  
Lime or Platinum  
Twelve 12 oz. bottles or cans

**16<sup>99</sup>**

**\*Jack Daniel's Perfect Mix**  
Four 355 ml. cans, Selected Varieties

**\*Cutwater Spirits**  
Four 12 oz. cans, Selected Varieties

**\*Coors Beer**  
•Light - Nine 16 oz. aluminum bottles or  
Twelve 12 oz. bottles  
•Light or Banquet - Twelve 12 oz. cans

**\*Miller Lite Beer**  
Nine 16 oz. aluminum bottles or  
Twelve 12 oz. bottles or cans

**\*Budweiser Beer**  
Light or Regular  
•Twelve 12 oz. bottles or cans  
•Twelve 16 oz. aluminum bottles

**\*O'Doul's Non-Alcoholic Brew**  
Twelve 12 oz. cans

**\*Sapporo Beer**  
Twelve 12 oz. cans

**15<sup>99</sup>**

**\*Crown Royal**  
Four 355 ml. cans  
Selected Varieties

**\*Kirin Ichiban Beer**  
Twelve 12 oz. bottles or cans

**\*Natural Ice Beer**  
Fifteen 12 oz. cans

**13<sup>99</sup>**



**\*Funny Water**  
Classic or Sweet & Spicy  
Twelve 12 oz. cans

**\*Pabst Blue Ribbon Beer**  
Twelve 12 oz. cans

**\*Keystone Light Beer**  
Fifteen 12 oz. cans

**12<sup>99</sup>**

**\*High Noon**  
Four 355 ml. cans  
Selected Varieties

**\*Maui Brewing**  
Big Swell or Bikini Blonde

**\*Waikiki Brewing Company**  
Eee Pah IPA or Aloha Spirit Blonde Ale  
Six 12 oz. cans

**\*Bud Ice Beer**  
Twelve 12 oz. bottles

**\*Rolling Rock Extra Pale Beer**  
Twelve 12 oz. cans

**11<sup>99</sup>**

**\*Jack Daniel's Country Cocktails**  
Six 10 oz. bottles  
Selected Varieties

**\*Ola Hard Seltzer**  
Selected Varieties or  
**Kona Spiked Tropical Punch Island Seltzer**  
Six 12 oz. cans

**10<sup>99</sup>**

**\*Smirnoff Ice Premium Malt Beverage**  
Selected Varieties

**\*Mike's Hard Lemonade**  
Cranberry or Lemonade

**\*Stella Artois Lager**  
Six 11.2 oz. bottles

**\*Maui or White Claw Hard Seltzer**  
Selected Varieties

**\*Sierra Nevada IPA Hazy Little Thing**  
Six 12 oz. cans

**9<sup>99</sup>**

**\*Maui Brewing**  
Coconut Porter or IPA  
Four 12 oz. cans

**\*Michelob Ultra Pure Gold**  
Six 12 oz. bottles

**8<sup>99</sup>**

**Soonhari or Jinro Soju**  
375 ml., Selected Varieties

**4<sup>99</sup>**