



"Make Longs a Part of Your Day"

Sale Sun., 6/8 - Sat., 6/14/25

at most OAHU LONGS DRUGS

Advertised items are available at participating locations

We accept all manufacturers' coupons, subject to manufacturer's restrictions.  
We reserve the right to limit sales to dealers, restaurants or institutions. General Excise Tax additional.  
Seasonal Merchandise is limited to stock on hand. Advertised items are available at participating locations.  
**LONGS 24-HOUR STORES:** Sale effective Sunday (6/8) 12:00 am thru Saturday (6/14) 12:00 midnight.  
Liquor items will be available for purchase from 6:00 am - 12:00 midnight.

Longs Drugs®  
is a proud sponsor **MARCH OF DIMES**

Visit any of our Longs Drug Stores & help us support March of Dimes Hawaii by raising funds for healthier babies. Purchase select Aloha Gourmet Snacks, Old Trapper Beef Sticks & World's Finest Chocolates.

"Together We're Building Healthy Families"



Find more deals  
on **longs.com**

Follow us on Social Media

@LongsDrugsHI



**HOT PRICE!**

While Supplies Last! Sorry, No Rainchecks.

House to Home  
16 in. Oscillating  
Pedestal Fan  
White or Black

**18<sup>99</sup>** WITH CARD



Summer  
Savings  
Selected Varieties  
Sale items not included

**25% OFF**  
WITH CARD



**3M & Bic  
Stationery Products**  
Selected Varieties

Buy 1, Get 1

**50% OFF\*\***  
WITH CARD



**HOT PRICE!**

While Supplies Last! Sorry, No Rainchecks.

Libby's  
Luncheon Loaf  
12 oz.

**1<sup>99</sup>** WITH CARD



**HOT PRICE!**

While Supplies Last! Sorry, No Rainchecks.

Asian Garden Shrimp  
16/20 count, 2 lb. bag

**9<sup>99</sup>** WITH CARD



**Royal Kona Coffee**  
8 oz. or 12 count  
Selected Varieties

Select items contain  
90% foreign-grown  
coffee

**8<sup>99</sup>** WITH CARD

100% Kona Coffee

Whole Bean or  
Ground - 7 oz.

**21<sup>99</sup>** WITH CARD



**L'Oreal  
Cosmetics**  
Selected Varieties

ExtraBucks® Rewards  
offer limit of 1  
per household  
with card.

Buy 1, Get 1  
**50% OFF\*\***  
WITH CARD

Spend \$25 Get  
**\$7**  
ExtraBucks® Rewards



**Maui Style  
\*Potato Chips**  
6 oz., Selected Varieties

\*Shrimp  
Chips  
4.5 oz. **2/\$6** WITH CARD

Lay's Dip  
15 oz. **4<sup>99</sup>** WITH CARD  
Selected Varieties



**Diamond Bakery  
Hawaiian Shortbread  
Macadamia Nut Cookies**  
4 oz., Selected Varieties or  
**Soda Crackers**  
13 oz., Selected Varieties



**2/8<sup>50</sup>** WITH CARD



**Nature's Bounty &  
Osteo Bi-Flex  
Vitamins & Supplements**  
Selected Varieties

Buy 1, Get 1

**FREE\*\***  
WITH CARD



**Hawaiian Sun  
Drinks**  
Six 11.5 oz. cans  
Selected Varieties

**2/\$7**  
WITH CARD



**Coca-Cola  
Products**  
Twenty-four  
12 oz. cans  
Selected Varieties

**13<sup>29</sup>**  
WITH CARD



\*Jameson  
Irish Whiskey  
750 ml., Selected Varieties

\*Cazadores Tequila  
Blanco or Reposado  
750 ml.

**24<sup>99</sup>** WITH CARD

Maker's Mark  
Bourbon Whiskey  
750 ml.

**22<sup>99</sup>** WITH CARD



**Michelob Ultra**

Twenty-four  
12 oz. cans

**26<sup>99</sup>** WITH CARD

Corona Beer or  
Heineken Lager Beer

Twelve 12 oz.  
bottles or cans  
Selected Varieties

**16<sup>99</sup>** WITH CARD



\*Budweiser Beer  
Light or Regular  
\*Coors Beer  
Light or Banquet  
\*Miller Beer  
Lite or 64  
Thirty 12 oz. cans

**28<sup>99</sup>** WITH CARD



**\*One A Day & Flintstones Vitamins  
\*Citracal**  
Selected Varieties

Buy 1, Get 1

**50% OFF\*\***  
WITH CARD



**Colgate**  
Toothpaste  
6 oz.  
Selected Varieties

**1.99** WITH CARD



**Alcon Naphcon-A, Zaditor, Systane, GenTeal, Opti-Free & Pataday**  
Eye Drops  
Selected Varieties

Buy 1, Get 1

**50% OFF\*\***  
WITH CARD



**U by Kotex**  
Clean & Secure  
Maxi Pads - 14 - 24 count or  
Ultra Thin Pads - 20 - 22 count

Selected Varieties

**2/\$7** WITH CARD



**Vitafusion & L'il Critters**  
Vitamins & Digestives  
Selected Varieties

Buy 1, Get 1

**50% OFF\*\***  
WITH CARD



**CVS Health**  
Naproxen Sodium, Ibuprofen & Acetaminophen  
Selected Varieties  
*Children's, PM, Trial & Travel sizes not included*

Buy 1, Get 1

**50% OFF\*\*** WITH CARD



**\*SatoHap**  
External Pain Relief  
**\*Sato Collagen & Yunker**  
Supplements  
Selected Varieties

Buy 1, Get 1

**50% OFF\*\*** WITH CARD



**U by Kotex**  
Clean & Secure  
Liners  
80 - 96 or 129 count  
Selected Varieties

**6.49** WITH CARD



**Airborne**  
Selected Varieties

Buy 1, Get 1

**50% OFF\*\***  
WITH CARD



**Afrin Cold & Allergy Remedies, Alka-Seltzer Plus Cold & Coricidin HBP**  
Selected Varieties

Buy 1, Get 1

**50% OFF\*\*** WITH CARD



**Icy Hot & Aspercreme**  
Selected Varieties

Buy 1, Get 1

**50% OFF\*\***  
WITH CARD



**U by Kotex**  
Ultra Thin Pads  
13 - 18 count or  
Liners  
40 - 50 count  
Selected Varieties

**2/\$9** WITH CARD



**Tums Antacids**  
Selected Varieties

Buy 1, Get 1

**40% OFF\*\***  
WITH CARD



**Zyrtec Allergy**  
Selected Varieties  
*Zyrtec-D not included*

Buy 1, Get 1

**50% OFF\*\***  
WITH CARD



**Preparation H**  
Selected Varieties

Buy 1, Get 1

**50% OFF\*\***  
WITH CARD



**CVS Health**  
Baby Wipes  
56 - 72 count  
Selected Varieties

**2/\$5** WITH CARD



**Metamucil**  
Selected Varieties

Buy 1, Get 1

**50% OFF\*\***  
WITH CARD



**Zicam**  
Selected Varieties

Buy 1, Get 1

**50% OFF\*\***  
WITH CARD



**Ricola Drops**  
19 - 24 count  
Selected Varieties

**2/4.50** WITH CARD



**Live Better**  
Ultra-Soft  
Diapers  
21 - 32 count  
Selected Varieties

**7.99** WITH CARD

*Sold Exclusively at Longs!*





**Hask**  
Shampoos &  
Conditioners  
Selected Varieties

Buy 1, Get 1  
**50% OFF\*\***  
WITH CARD



**Wet n Wild**  
Cosmetics  
Selected Varieties

Buy 1, Get 1  
**50% OFF\*\***  
WITH CARD



**Epielle**  
Facial  
Skincare  
Selected Varieties

**2/\$4**  
WITH CARD



Buy 1, Get 1  
**50% OFF\*\***  
WITH CARD  
Spend \$20 Get  
**\$3**  
ExtraBucks® Rewards

**Garnier Skincare**  
Selected Varieties

ExtraBucks® Rewards  
offer limit of 1 per household with card.



**CVS Health**  
Hair Regrowth  
Selected Varieties

Buy 1 Get  
**\$5**  
ExtraBucks® Rewards

ExtraBucks® Rewards  
offer limit of 1 per household with card.



**Sun Bum**  
Suncare  
Selected Varieties

**20% OFF**  
WITH CARD



**Differin**  
Skincare  
Selected Varieties

**25% OFF**  
WITH CARD



**Premium &  
Hawaiian**  
Fragrances &  
Gift Sets  
Selected Varieties

**15% OFF**  
WITH CARD



**Burt's Bees**  
Selected Varieties

Buy 1, Get 1  
**50% OFF\*\***  
WITH CARD



**CVS Health**  
Hand Soap  
7.5 - 11.25 oz.  
Selected Varieties

**2/\$3** WITH CARD  
Refill - 50 - 64 oz.  
**4.99** WITH CARD  
Selected Varieties



**Ogx**  
Haircare  
Selected Varieties  
Trial & Travel sizes  
not included

Buy 1, Get 1  
**50% OFF\*\***  
WITH CARD



**Crest &  
Oral-B**  
3D White  
Selected Varieties

Buy 1, Get 1  
**50% OFF\*\***  
WITH CARD



**CVS Health**  
Toothbrushes  
Selected Varieties

Buy 1, Get 1  
**50% OFF\*\***  
WITH CARD



**CVS Health**  
Antiseptic  
Mouthwash  
Blue Mint or  
Green Mint  
1.5 liters

**4.99**  
WITH CARD



**CVS Health**  
Denture  
Cleansers  
Selected Varieties

Buy 1, Get 1  
**50% OFF\*\***  
WITH CARD



**CVS Health**  
Fitted Briefs, Underwear,  
Protective Pads,  
Guards & Shields  
Selected Varieties

Buy 1,  
Get 1  
**50% OFF\*\*** WITH CARD



**TENA**  
Pads &  
Guards  
Selected Varieties

Buy 1, Get 1  
**50% OFF\*\***  
WITH CARD



**Omron &  
CVS Health**  
Blood Pressure  
Monitors  
Selected Varieties

**20% OFF**  
WITH CARD



**CVS Health**  
Home Care  
Raised Toilet Seat

**29.99** WITH CARD

**Shower Chair &  
Stool**

**39.99** WITH CARD

**Folding  
Commode**

**49.99** WITH CARD



**CVS Health**  
Baby Toiletries  
Selected Varieties

Buy 1, Get 1  
**50% OFF\*\***  
WITH CARD



**Trojan**  
Selected Varieties

Buy 1, Get 1  
**50% OFF\*\***  
WITH CARD



**L'Oréal Magic Root Permanent**  
Selected Varieties

**Must Buy**  
**3/\$18**  
WITH CARD

or **6<sup>99</sup>** EACH  
WITH CARD

**Buy 3 Get \$4**  
ExtraBucks® Rewards

ExtraBucks® Rewards  
offer limit of 1 per household with card.



**L'Oréal Féria Permanent Haircolor**  
Selected Varieties

**11<sup>99</sup>**  
WITH CARD

**Buy 2 Get \$2**  
ExtraBucks® Rewards

ExtraBucks® Rewards  
offer limit of 1 per household with card.



**Garnier Fructis & Whole Blends Haircare**  
Selected Varieties

**Buy 1, Get 1 50% OFF\*\***  
WITH CARD



**Aveeno Haircare, Skincare & Suncare**  
Selected Varieties

**ExtraBucks® Rewards**  
offer limit of 1 per household with card.

**Buy 1, Get 1 50% OFF\*\***  
WITH CARD

**Spend \$15 Get \$3**  
ExtraBucks® Rewards



**Revlon & Almay Cosmetics**  
Selected Varieties

**Buy 1, Get 1 50% OFF\*\***  
WITH CARD

**Spend \$25 Get \$7**  
ExtraBucks® Rewards

ExtraBucks® Rewards  
offer limit of 1 per household with card.



**Just For Men Haircolor**  
Selected Varieties

**8<sup>99</sup>**  
WITH CARD



**Sally Hansen Nail & Cosmetics**  
Selected Varieties

**ExtraBucks® Rewards**  
offer limit of 1 per household with card.

**Buy 1, Get 1 50% OFF\*\***  
WITH CARD

**Spend \$10 Get \$2**  
ExtraBucks® Rewards



**Dove & Caress Body Washes**  
Selected Varieties

**Buy 1, Get 1 50% OFF\*\***  
WITH CARD



**Ardell Eyelashes, Eyebrows & Duo Products**  
Selected Varieties

**Buy 1, Get 1 50% OFF\*\***  
WITH CARD



**One+Other Cotton**  
Selected Varieties  
Trial & Travel sizes not included

**Buy 1, Get 1 50% OFF\*\***  
WITH CARD

*Sold Exclusively at Longs!*



**Salux Striped Nylon Wash Cloth**  
Selected Varieties

**2/\$5**  
WITH CARD

**\$10 ExtraBucks®** when you spend **\$45** on ANY of the P&G products shown on this page.  
extrabucks® rewards are good for use on your next purchase. Offer limit of 2 per household with card. Other restrictions may apply.



**Dawn Dishwashing Liquid**  
14.6 - 18 oz.  
Selected Varieties

**2/\$7**  
WITH CARD



**Downy Fresh Fabric Softener**  
Sweet Summer or Lavender Dream  
50 oz.

**3<sup>49</sup>**  
WITH CARD



**\*Gain Flings**  
14 - 16 count  
Selected Varieties

**\*Tide Pods**  
Ultra Oxi - 12 count or Original - 16 count

**2/\$11**  
WITH CARD



**Tide Simply Liquid Laundry Detergent**  
Daybreak Fresh or Refreshing Breeze  
32 oz.

**3<sup>79</sup>**  
WITH CARD



**Olay Body Care**  
Selected Varieties

**Buy 1, Get 1 50% OFF\*\***  
WITH CARD



**Secret & Old Spice Deodorants**  
Selected Varieties

**Buy 1, Get 1 50% OFF\*\***  
WITH CARD



**Gillette Shave Gel**  
7 oz.  
Selected Varieties

**2/\$7**  
WITH CARD



**Gillette Mach3 Razor**  
**7<sup>99</sup>** WITH CARD

**Cartridges**  
4 count  
**11<sup>99</sup>** WITH CARD



**Ivory Soap**  
Aloe or Original  
10 count

**7<sup>99</sup>**  
WITH CARD



**Old Spice Body Washes**  
Selected Varieties

**Buy 1, Get 1 50% OFF\*\***  
WITH CARD



**Braun Blue Mobile Shave**  
Shavers & Trimmers  
Selected Varieties

**15<sup>99</sup>** WITH CARD

#M-60b

**20% OFF** WITH CARD

*Sale items not included*





**P-Nuttles**  
6 - 18 oz.  
big bag  
Selected Varieties

**3<sup>99</sup>**  
WITH CARD



**Hawaii  
Candy  
Wun Tun  
Strips or  
Puff Rice  
Cakes**  
3 oz.  
Selected Varieties

**2/\$7**  
WITH CARD



**Kellogg's  
Cereal**  
Froot Loops  
7.9 oz.,  
Frosted Flakes  
10.9 oz. or  
Frosted  
Mini Wheats  
14.5 oz.

**2/\$7**  
WITH CARD



**Nissin  
Chow Mein Noodles**  
4 oz., Selected Varieties

**3/\$5** WITH CARD



**Snyder's  
of Hanover  
Seasoned  
Pretzels**  
11.25 - 12 oz.  
Selected Varieties

**2/7<sup>50</sup>**  
WITH CARD



**Enjoy  
Cookies**  
5 - 5.3 oz.  
Selected Varieties

**2/\$7**  
WITH CARD



**SunHearth  
Milk**  
One gallon  
Selected Varieties

**7<sup>49</sup>**  
WITH CARD



**Nice Brand  
Bean Thread**  
7.75 oz.

**3<sup>99</sup>**  
WITH CARD



**Seiki Mochi**  
4.23 oz.  
stand-up bag  
Selected Varieties

**2/\$7**  
WITH CARD



**Meiji  
Yan Yan**  
Strawberry or Chocolate  
2 oz. or  
**Hello Panda  
Cookies**  
Strawberry or Chocolate  
2.1 oz.

**1<sup>39</sup>** WITH CARD



**Sue Bee  
Pure Honey**  
3 lb.

**18<sup>99</sup>**  
WITH CARD



**Dollar Food  
Chinese Style  
Sausage**  
13 oz.

**8<sup>29</sup>**  
WITH CARD



**Glico  
Pocky**  
1.41 oz.  
Selected Varieties

**4/\$5**  
WITH CARD



**Duncan Hines  
Fudge Brownie  
Mix**  
Dark Chocolate  
18.2 oz. or  
Chewy - 18.3 oz.

**2/\$4**  
WITH CARD



**Bumble Bee  
Snack  
on the Run**  
3.5 oz.  
Selected Varieties

**2/\$4**  
WITH CARD



**Shirakiku  
Fukujinzuke**  
Regular or  
Tokyozuke  
5.29 oz.

**2<sup>99</sup>**  
WITH CARD



**Cheez-It  
Baked  
Snack Crackers**  
7 oz.  
Selected Varieties

**2/6<sup>50</sup>**  
WITH CARD



**Duncan Hines  
Frosting** - 16 oz.  
Selected Varieties  
**2/\$4** WITH CARD  
**Cake Mix** - 15.25 oz.  
Selected Varieties  
**2/\$5** WITH CARD



**Kraft  
Dressing**  
16 oz.  
Selected Varieties

**2/\$6**  
WITH CARD



**Shirakiku  
Sukiyaki  
no Tomo**  
Dr. wt. 8.75 oz.

**2<sup>69</sup>**  
WITH CARD



 <p><b>Del Monte Green Beans, Corn or Sweet Peas</b> 11 - 15.25 oz. Selected Varieties</p> <p><b>2/\$4</b> WITH CARD</p>	 <p><b>Lipton Soup Secrets Noodle Soup</b> 2 count</p> <p><b>3/\$5</b> WITH CARD</p>  <p><b>Recipe Secrets Onion Soup &amp; Dip Mix</b> 2 count</p> <p><b>2/\$4</b> WITH CARD</p>	 <p><b>HOT PRICE!</b> <i>While Supplies Last! Sorry, No Rainchecks.</i></p> <p><b>Myjo Chukazanmai Noodles</b> 3.52 - 4.9 oz., Selected Varieties</p> <p><b>4/\$5</b> WITH CARD</p>  <p><b>Udon Noodles</b> 7.22 - 7.23 oz. Selected Varieties</p> <p><b>3/\$5</b> WITH CARD</p>	 <p><b>Noh Mixes or Sauces</b> 1 - 3 oz. Selected Varieties</p> <p><b>4/\$7</b> WITH CARD</p>  <p><b>Poke Mix</b> 0.4 oz.</p> <p><b>4\$59</b> WITH CARD</p>	 <p><b>Bananas</b> 3 lb.</p> <p><b>3\$99</b> WITH CARD</p>  <p><b>Tangerines</b> 3 lb.</p> <p><b>4\$99</b> WITH CARD</p>  <p><b>Fuji Apples</b> 3 lb.</p> <p><b>5\$49</b> WITH CARD</p>  <p><b>Strawberries</b> One lb.</p> <p><b>6\$99</b> WITH CARD</p>	 <p><b>Nabisco Chips Ahoy® - 7 - 13 oz. or Ritz Crackers - 11.8 - 13.7 oz.</b> Selected Varieties</p> <p><b>2/\$8</b> WITH CARD</p>	 <p><b>Loacker Quadratini Wafer Cookies</b> 8.82 oz. Selected Varieties</p> <p><b>3\$99</b> WITH CARD</p>	 <p><b>CANDY of the WEEK!</b></p> <p><b>HOT PRICE!</b> <i>While Supplies Last! Sorry, No Rainchecks.</i></p> <p><b>FruTips Gummy Candy</b> 2.1 oz.</p> <p><b>2\$19</b> WITH CARD</p>
 <p><b>Del Monte Tomato Sauce</b> Regular or No Salt Added</p> <p><b>4/\$3</b> WITH CARD</p> <p>8 oz.</p>  <p><b>Pasta Sauce</b> 24 oz. Selected Varieties</p> <p><b>3/\$5</b> WITH CARD</p>	 <p><b>Chef Boyardee Pasta</b> 14.5 - 15 oz. Selected Varieties</p> <p><b>2/\$4</b> WITH CARD</p>	 <p><b>Nescafe Taster's Choice Coffee</b> 7 oz. Selected Varieties</p> <p><b>10\$79</b> WITH CARD</p>	 <p><b>Devour Frozen Meal</b> 10.5 - 12 oz. Selected Varieties</p> <p><b>2/\$7</b> WITH CARD</p>  <p><b>Delimex Quesadilla</b> Chipotle Chicken or Char-Grilled Chicken 8 oz.</p> <p><b>5\$99</b> WITH CARD</p>	 <p><b>Lotte Kimbap</b> 8.11 oz. Selected Varieties</p> <p><b>4\$99</b> WITH CARD</p>	 <p><b>Kauai Kookie Cookies</b> 4.5 - 5 oz. Selected Varieties</p> <p><b>2/\$8</b> WITH CARD</p>	 <p><b>HOT PRICE!</b> <i>While Supplies Last! Sorry, No Rainchecks.</i></p> <p><b>Brownie Brittle</b> 4 - 5 oz. Selected Varieties</p> <p><b>3\$99</b> WITH CARD</p>	 <p><b>Hawaiian Host Island Macs</b> 4.3 oz.</p> <p><b>4\$39</b> WITH CARD</p> <p>5 pack</p> <p><b>19\$99</b> WITH CARD</p>
 <p><b>Ragu Pasta Sauce</b> Traditional or Mushroom 24 oz.</p> <p><b>2\$99</b> WITH CARD</p>	 <p><b>Brunswick Sardines</b> in Soybean Oil - 3.75 oz.</p> <p><b>4/\$5</b> WITH CARD</p> <p>3.75 oz. Selected Varieties</p> <p><b>2/\$3</b> WITH CARD</p>	 <p><b>Hawaiian Paradise Coffee</b> 7 oz. Selected Varieties</p> <p><b>6\$29</b> WITH CARD</p>	 <p><b>Pillsbury Crescents, Cinnamon Rolls or Cornbread Swirls</b> 8 - 12.4 oz. Selected Varieties</p> <p><b>2/\$5</b> WITH CARD</p>	 <p><b>Oscar Mayer Beef Franks</b> 16 oz. Selected Varieties</p> <p><b>3\$99</b> WITH CARD</p>	 <p><b>Brownie Baker Pastry</b> 4 - 6 oz. Selected Varieties</p> <p><b>2\$79</b> WITH CARD</p>	 <p><b>Act II Microwave Popcorn</b> 3 count Selected Varieties</p> <p><b>2/\$4</b> WITH CARD</p>	 <p><b>Island Princess Macadamia Nuts</b> 10 oz. Selected Varieties</p> <p><b>18\$99</b> WITH CARD</p>
 <p><b>Barilla Pasta</b> One lb. Selected Varieties</p> <p><b>2/\$4</b> WITH CARD</p>	 <p><b>Snow's Clams</b> Minced or Chopped 6.5 oz.</p> <p><b>2\$19</b> WITH CARD</p>	 <p><b>Health-Ade Kombucha</b> 11.5 oz. Selected Varieties</p> <p><b>2/\$4</b> WITH CARD</p>	 <p><b>Hearth &amp; Harvest Bread</b> White or Whole Wheat 22 oz.</p> <p><b>4\$99</b> WITH CARD</p>	 <p><b>Gallo Salame</b> Pepperoni or Italian Dry Salame 7 oz.</p> <p><b>4\$59</b> WITH CARD</p>	 <p><b>Snak Club Trail Mix</b> 16 oz. Selected Varieties</p> <p><b>4\$49</b> WITH CARD</p>	 <p><b>Brown &amp; Haley Chocolate Squares</b> 4.4 oz. Selected Varieties</p> <p><b>4\$99</b> WITH CARD</p>	 <p><b>Hershey's Candy</b> 7.6 - 9.9 oz. pouch or 10.35 - 11.3 oz. snack size Selected Varieties</p> <p><b>5\$99</b> WITH CARD</p>
 <p><b>Bertolli Olive Oil</b> 16.9 oz. Selected Varieties</p> <p><b>7\$99</b> WITH CARD</p>	 <p><b>Snow's New England Clam Chowder</b> Condensed or Ready to Serve 15 oz.</p> <p><b>2/\$5</b> WITH CARD</p>	 <p><b>McCormick Gravy Mix</b> Brown - 0.87 oz.</p> <p><b>99¢</b> WITH CARD</p> <p>Turkey - 0.87 oz.</p> <p><b>2/\$3</b> WITH CARD</p>	 <p><b>Smucker's *Marmalade or Preserves</b> Selected Varieties</p> <p><b>*Goober Grape or Strawberry</b></p> <p><b>2/\$8</b> WITH CARD</p>	 <p><b>Mariani Dried Fruits</b> 4 - 7 oz. Selected Varieties</p> <p><b>2/\$7</b> WITH CARD</p>	 <p><b>Aloha Gourmet Da Crack Seed Jar</b> 2 - 10 oz. Selected Varieties</p> <p><b>2/\$9</b> WITH CARD</p>	 <p><b>Mars or Wrigley Candy</b> 1.08 - 2.17 oz.</p> <p><b>4/\$5</b> WITH CARD</p> <p>Selected Varieties</p>  <p><b>Altoids Mints</b> 1.76 oz. Selected Varieties</p> <p><b>2\$79</b> WITH CARD</p>	 <p><b>Hershey's Candy</b> 3.5 - 6 oz. box Selected Varieties</p> <p><b>2/\$3</b> WITH CARD</p> <p>7.37 - 7.56 oz. giant bar Selected Varieties</p> <p><b>3\$99</b> WITH CARD</p>





### AquaFina Purified Water

Twenty-four  
16.9 oz. bottles

**6<sup>99</sup>** WITH CARD



### Dasani Water

Twenty-four  
16.9 oz. bottles

**8<sup>99</sup>** WITH CARD



### Gatorade Thirst Quencher

28 oz.  
Selected Varieties

**2/\$4** WITH CARD



### Lion Cold Brew Coffee

11 oz.  
Selected Varieties

**2/\$4** WITH CARD



### Coca-Cola Products

Ten 7.5 oz. cans  
Selected Varieties

**2/\$9** WITH CARD



### Powerade Drink

28 oz.  
Selected Varieties

**4/\$5** WITH CARD



### Body Armor Drink

16 oz.  
Selected Varieties

**4/\$5** WITH CARD



### Pepsi Products

Twelve 12 oz. cans  
Selected Varieties

**5<sup>99</sup>** WITH CARD



### Menehune Water

Purified or  
Steamed Distilled  
One gallon

**2/\$7** WITH CARD



### Monster Energy Drink

16 oz.  
Selected Varieties

**3/6<sup>75</sup>** WITH CARD



### Celsius Sparkling Drink

12 oz.  
Selected Varieties

**2/\$4** WITH CARD



### Bigs Sunflower Seeds

5.35 oz., Selected Varieties

**2/\$4** WITH CARD

### Pumpkin Seeds

5 oz.  
**2/\$6** WITH CARD



### Hawaiian Crispy Golden Rings

Sweet Maui or Luau Barbeque

4 oz.  
**4<sup>49</sup>** WITH CARD

### Kettle Style Potato Chips

7.5 oz.  
Selected Varieties  
**4<sup>99</sup>** WITH CARD



### Yick Lung Nibb-Its Original Twists

4 oz.

**5<sup>99</sup>** WITH CARD



### Tostitos Salsa

15.5 oz., Selected Varieties  
**2/\$8** WITH CARD



### Tortilla Chips

9 - 13 oz.  
Selected Varieties

**2/\$10** WITH CARD



### Auntie Liu's Peanuts

10.6 oz.  
Selected Varieties

**5<sup>99</sup>** WITH CARD



### Zapp's Pretzels

5 oz.  
Selected Varieties

**3<sup>99</sup>** WITH CARD



### Pringles Mingles

5.5 oz.  
Selected Varieties

**3<sup>99</sup>** WITH CARD



### Keebler Sandwich Crackers

8 count  
Selected Varieties

**3<sup>79</sup>** WITH CARD



### Da Heo Chicharon

3.5 oz.  
Selected Varieties

**2/\$9** WITH CARD



### Better Jerky Co. Jerky Crisps

2 oz.  
Selected Varieties

**8<sup>99</sup>** WITH CARD



### Kasugai Shrimp Snack

2.04 oz. or  
Squid Snack  
2.18 oz.

**2/\$4** WITH CARD



### Daiko Nori Arare

10.5 oz., Selected Varieties

**10<sup>99</sup>** WITH CARD



**CVS**  
**Alkaline Batteries**

\*AA16, AAA16, C8, D8 or 9V4

\*Max

AA12 or AAA12

**9<sup>99</sup>** WITH CARD



**Ellemoi**  
**Facial**  
**Tissue**  
5 count

**8<sup>29</sup>**

WITH CARD



**Clorox**  
**Handi Wipes**  
**Reusable Cloths**

Heavy Duty - 3 count or  
Multi-Use - 6 count

**2/\$4** WITH CARD



**S.O.S**  
**Steel Wool Pads**

Regular or Lemon  
10 count

**2/\$5** WITH CARD



**Lysol**  
**Air Sanitizer**  
10 oz.  
Selected Varieties

**7<sup>99</sup>**

WITH CARD



**Kitchen Helper**  
**Stainless Steel**  
**Tong**  
Mini - 7 in.

**99¢** WITH CARD

9.5 in.

**1<sup>59</sup>** WITH CARD

12 in.

**1<sup>99</sup>** WITH CARD



**In Harmony**  
**Melamine**  
**Saimin Spoon**

**79¢** WITH CARD

Ladle or  
Rice Paddle

**1<sup>29</sup>** WITH CARD



**In Harmony**  
**Melamine**  
**Bowl**

5 in.

**1<sup>19</sup>** WITH CARD



6 in.

**1<sup>79</sup>** WITH CARD



**Formula 409**  
**Multi-Surface**  
**Cleaner**  
Original or Lemon  
32 oz.

**2/\$7**

WITH CARD



**CLR Cleaner**  
26 - 32 oz.  
Selected  
Varieties or  
**Tarn-X**  
**Tarnish**  
**Remover**  
12 oz.

**6<sup>99</sup>** WITH CARD



**Asian Broom**

**3<sup>99</sup>**

WITH CARD



**TRR**  
**Toilet Ring**  
**Remover**  
1/2 gallon

**12<sup>99</sup>**

WITH CARD



**Hawaii Spirit**  
**Insulated**  
**Lunch Tote**  
Small  
Selected Varieties

**3<sup>79</sup>** WITH CARD

Medium  
Selected Varieties

**4<sup>49</sup>** WITH CARD

Large  
Selected Varieties

**4<sup>99</sup>** WITH CARD



**In Harmony**  
**Melamine**  
7 in. Bowl,  
10 in. Plate or  
Platter

**2<sup>49</sup>**

WITH CARD



**In Harmony**  
**Melamine**  
**Bowl**

8 in.

**2<sup>99</sup>** WITH CARD



9 in.

**3<sup>99</sup>** WITH CARD



**Little Trees**  
**Air Fresheners**  
2 count  
Selected Varieties

**2/\$4**

WITH CARD



**Bug Bam**  
**Mosquito Band**

2 count **2/\$7** WITH CARD

**Ranger Ready**  
**Repellent**

Zero or Orange  
3.38 oz.

**7<sup>49</sup>** WITH CARD



**California Scents**  
**Car Scent**

Ice or  
Coronado Cherry  
1.5 oz.

**2/\$5** WITH CARD



**Scent Bomb**  
**Concentrated Air Freshener**

One oz.  
Selected Varieties

**2<sup>69</sup>** WITH CARD



**Off**  
**Insect**  
**Repellents**  
Selected Varieties

**30% OFF**

WITH CARD





**Hefty Paper  
Luau Trays**  
12 count or  
**Snack Plates**  
30 count

**2<sup>99</sup>**  
WITH CARD



**Duracell  
Coppertop  
Batteries**  
AA8, AAA8,  
C4, D4 or 9V2

**8<sup>99</sup>**  
WITH CARD



**Aloha Fresh Slider Bags**  
15 - 25 count, Selected Varieties

**1<sup>69</sup>** WITH CARD



**Scott  
Choose-A-  
Sheet  
Paper Towels**  
6 count

**7<sup>29</sup>**  
WITH CARD



**Xtra  
Laundry  
Detergent**  
136.4 - 139.2 oz.  
Selected Varieties

**6<sup>99</sup>**  
WITH CARD



**Palmolive Ultra Dish Liquid**  
Antibacterial or  
Ultra Strength  
9.7 oz.

**2/\$3** WITH CARD



**Dawn  
Scrubber Sponges**

3 count  
Selected  
Varieties **4<sup>99</sup>** WITH CARD



**Charmin  
Mega Roll  
Bathroom  
Tissue**  
6 count

**7<sup>99</sup>**  
WITH CARD



**Lysol  
Toilet Bowl  
Cleaner**  
24 oz.  
Selected Varieties

**2<sup>69</sup>**  
WITH CARD



**Kitchen Helper  
Sink Strainer**

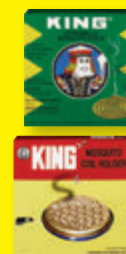
Single  
count **1<sup>99</sup>** WITH CARD

**Bathroom Helper  
Basin  
Strainer**  
2 count **2<sup>69</sup>** WITH CARD



**Windex  
Cleaner**  
23 oz.  
Selected Varieties

**4<sup>29</sup>**  
WITH CARD



**King  
Citronella  
Mosquito Coils**

10 count **1<sup>39</sup>** WITH CARD

**Mosquito  
Coil Holder** **4<sup>49</sup>** WITH CARD

## Summer Savings



**House to Home  
12 in.  
Oscillating  
Table Fan**

**18<sup>99</sup>**  
WITH CARD



**Igloo  
Playmate  
Elite Cooler**  
16 qt. capacity

**22<sup>99</sup>**  
WITH CARD



**Sun & Sky  
Kid's  
Camp Chair**  
Hippo or Lady Bug

**13<sup>99</sup>**  
WITH CARD



**Swim & Dive  
Products &  
Summer  
Beach Toys**  
Selected Varieties  
Sale items not included

**25% OFF**  
WITH CARD



**Honeywell  
Turboforce  
Power  
Air Circulator**

**17<sup>99</sup>**  
WITH CARD



**Igloo  
Wheelie Cool  
Cooler**  
38 qt. capacity

**38<sup>99</sup>** WITH CARD



**Sun & Sky  
Standard  
Camp Chair**  
Selected Varieties

**14<sup>99</sup>**  
WITH CARD



**Lasko  
20 in.  
Box Fan**

**25<sup>99</sup>**  
WITH CARD



**Summer  
Footwear**  
Selected Varieties

**25% OFF**  
WITH CARD



**Sun & Sky  
Deluxe  
Camp Chair**  
Selected Varieties

**16<sup>99</sup>**  
WITH CARD



**Summer  
Toys**  
Selected Varieties  
Sale items not included

**25% OFF**  
WITH CARD





**Patron**  
Silver Tequila or  
Don Julio  
Blanco Tequila  
**39<sup>99</sup>**  
750 ml.

**Jameson**  
Irish Whiskey  
750 ml.  
**24<sup>99</sup>**  
Selected Varieties



**\*Grey Goose**  
Vodka or  
Baileys  
Irish Cream  
Liqueur  
750 ml., Selected Varieties  
**\*1800**  
Silver Tequila  
750 ml.  
**25<sup>99</sup>**



**Ketel One Vodka**  
750 ml., Selected Varieties  
**23<sup>99</sup>**

**Jack Daniel's**  
Whiskey or  
Crown Royal  
Blended Whisky  
750 ml., Selected Varieties  
**22<sup>99</sup>**



**Meiomi Wine**  
750 ml., Selected Varieties  
**18<sup>99</sup>**

**Decoy Wine**  
Selected Varieties or  
Tito's  
Handmade Vodka  
750 ml.  
**17<sup>99</sup>**

**Save 10%**

when you fill this bag with 4 or more  
375 ml or larger, bottles of wine and/or  
spirits priced \$10 or greater.  
Excludes items priced ending in 97¢.

**Mix &  
match!**

Selection, availability and pricing may vary by store and does not include applicable local, county, state or federal taxes.  
We reserve the right to limit quantities on all items. Regular retail prices quoted may vary in some stores.  
Clearance items not included. Beverage items are "CRV" where required by law.  
Alcoholic beverages available only in licensed stores. All beer & wine sold at minimums where state law regulates pricing.

**\*Koloa Kauai Rum** - Selected Varieties  
**\*Johnnie Walker Black Label**  
Blended Scotch Whisky  
**30<sup>99</sup>**  
750 ml.

**Bulleit Whiskey**  
Bourbon or Rye - 750 ml. **26<sup>99</sup>**

**\*Cazadores Tequila**  
Blanco or Reposado  
**\*Ocean Vodka**  
750 ml. **24<sup>99</sup>**

**Kahlua Liqueur**  
Original or Salted Caramel  
750 ml. **23<sup>99</sup>**

**\*Daou Paso Robles**  
Cabernet Sauvignon - 750 ml.  
**\*Maker's Mark**  
Bourbon Whiskey 750 ml. **22<sup>99</sup>**

**La Crema Sonoma Wine** - 750 ml.  
Pinot Noir Chardonnay  
**22<sup>99</sup> 16<sup>99</sup>**

**Black Box or**  
**Bota Box Wine**  
3 liters, Selected Varieties **19<sup>99</sup>**

**\*Captain Morgan Rum,**  
Malibu Rum or  
Jim Beam Kentucky Straight  
Bourbon Whiskey  
Selected Varieties

**\*La Marca Prosecco** - Regular or Rose  
**\*Jam Cellars Chardonnay,**  
Erath Pinot Noir or  
Rodney Strong  
Chalk Hill Chardonnay Wine  
750 ml. **15<sup>99</sup>**

**Josh Cellars**  
Cabernet Sauvignon or  
Merlot - 750 ml. **14<sup>99</sup>**

**Beringer Brothers Wine**  
Red Blend or  
Cabernet Sauvignon or  
750 ml. **14<sup>49</sup>**

**\*Edna Valley Vineyards,**  
Bacardi Puerto Rican Rum or  
Kim Crawford Marlborough  
750 ml., Selected Varieties

**\*Evan Williams Kentucky Straight**  
Bourbon Whiskey  
Regular or Honey Reserve - 750 ml.

**\*Fleischmann's**  
Regular Vodka  
1.75 liters **13<sup>99</sup>**

**19 Crimes Wine**  
Cali Gold Sparkling  
750 ml. **13<sup>99</sup>**  
750 ml. **8<sup>99</sup>**  
Selected Varieties

**\*Korbel California Champagne**  
Selected Varieties or  
Korbel Prosecco

**\*Sauza Tequila** - Gold or Silver  
**\*Fireball Cinnamon Whisky** or  
Southern Comfort  
750 ml. **12<sup>99</sup>**

**\*Captain Morgan's Parrot Bay Rum,**  
Imagery Wine, Risata or  
Wente Vineyards Estate Grown  
750 ml., Selected Varieties

**\*Black Velvet Canadian Whisky,**  
Hess Select  
Cabernet Sauvignon Wine or  
7 Deadly Zins Red Blend  
750 ml. **11<sup>99</sup>**

**14 Hands Vineyards, Matua** or  
Sterling Vintner's Collection Wine  
750 ml. **10<sup>99</sup>**  
Selected Varieties

**Folie a Deux Ménage a Trois**  
Bourbon Barrels  
Cabernet Sauvignon  
750 ml. **10<sup>99</sup>**  
750 ml. **8<sup>99</sup>**  
Selected Varieties

**Bolla Wine** - Selected Varieties,  
Angeline Pinot Noir Wine or  
Early Times Kentucky Whisky  
750 ml. **9<sup>99</sup>**

**Bogle Vineyards**  
750 ml., Selected Varieties **8<sup>89</sup>**

**Dark Horse Wine** or  
Smoking Loon  
California Wine  
750 ml., Selected Varieties **7<sup>99</sup>**

**Fetzer Wine** or  
Robert Mondavi  
Private Selection  
750 ml., Selected Varieties **6<sup>99</sup>**

**Barefoot California Wine,**  
CK Mondavi and Family Wine or  
Yellow Tail Australia Wine  
750 ml. **5<sup>99</sup>**  
Selected Varieties

**Sutter Home**  
California Wine  
750 ml., Selected Varieties **4<sup>99</sup>**



**Jose Cuervo**  
Especial Tequila  
Gold or Silver  
750 ml. **15<sup>99</sup>**

**Francis Coppola**  
Diamond  
Collection Wine  
750 ml., Selected Varieties  
**13<sup>99</sup>**



**\*Smirnoff Vodka** or  
Stella Rosa  
750 ml.  
Selected Varieties

**\*Kendall-Jackson**  
Avant - Chardonnay,  
Grand Reserve  
Low Calorie Chardonnay or  
Vintner's Reserve  
Chardonnay or Rose  
750 ml.  
**11<sup>99</sup>**



**New Amsterdam**  
Vodka  
Selected Varieties  
750 ml. **10<sup>99</sup>**

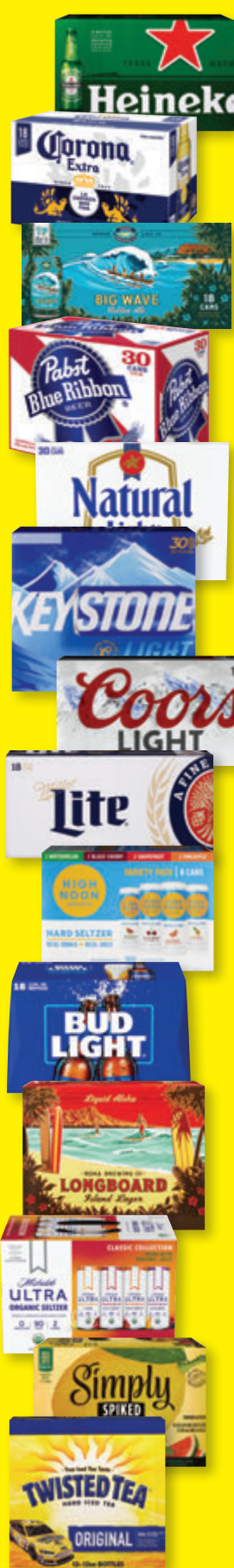
**Murphy Goode**  
Wine  
Selected Varieties  
750 ml. **9<sup>99</sup>**



**Apothic Wine** or  
Clos du Bois  
North Coast Wine  
750 ml., Selected Varieties  
**8<sup>99</sup>**

**Woodbridge**  
by Robert Mondavi  
750 ml., Selected Varieties  
**5<sup>99</sup>**





**\*Stella Artois Lager**  
Eighteen 11.2 oz. bottles

**\*Heineken Lager Beer**  
Original or Premium Light  
Eighteen 12 oz. bottles or Original  
Eighteen 12 oz. cans

**\*Corona Extra Beer**  
Eighteen 12 oz. bottles or cans

**\*Modelo Especial Beer**  
Eighteen 12 oz. cans

**\*Kona Brewing**  
Big Wave or Longboard  
Eighteen 12 oz. cans

**\*Pabst Blue Ribbon Beer**  
Thirty 12 oz. cans

**25<sup>99</sup>**

**Natural Beer**  
Ice or Light,  
**Rolling Rock Beer or**  
**Keystone Light Beer**  
Thirty 12 oz. cans

**23<sup>99</sup>**

**Coors Light or**  
**Miller Lite Beer**  
Fifteen 16 oz.  
aluminum bottles or  
Eighteen 12 oz. cans

**22<sup>99</sup>**

**High Noon**  
Eight 355 ml. cans  
Selected Varieties or  
**Budweiser Beer**  
Light - Eighteen 12 oz. bottles or  
Light or Regular  
Eighteen 12 oz. cans

**21<sup>99</sup>**

**\*Kona Brewing**  
Twelve 12 oz. bottles or cans  
Selected Varieties

**\*Michelob Ultra Seltzer**  
Classic or Signature Collection

**\*Nectar Seltzer**  
Variety Pack or Azuiki

**\*Corona Refresca, Simply**  
**Spiked Lemonade or**  
**Vizzy Hard Seltzer**  
**Variety Pack**

**\*Truly Berry Mix or**  
**Maui Mix Pack**  
**Hard Seltzer**  
Twelve 12 oz. cans

**\*Twisted Original**  
**Hard Iced Tea**  
Twelve 12 oz. bottles or cans

**19<sup>99</sup>**



**\*Truly Hard Seltzer**  
Selected Varieties

**\*The Beast Unleashed, Topo Chico**  
**Hard Seltzer or**  
**Maui Brewing**  
**Variety Pack**  
Twelve 12 oz. cans

**18<sup>99</sup>**

**\*Heritage Collection Beer**  
Twelve 11.2 oz. bottles

**\*Bud Light Seltzer or**  
**White Claw**  
**Hard Seltzer**  
Twelve 12 oz. cans  
Selected Varieties

**\*Beck's**  
**Regular German Beer**  
Twelve 12 oz. bottles

**17<sup>99</sup>**

**\*Steinlager Beer**  
Pure or Regular  
Twelve 11.15 oz. bottles

**\*Stella Artois Lager**  
Twelve 11.2 oz. bottles or cans

**\*Modelo Especial Beer**  
Selected Varieties

**\*Michelob Ultra**  
Regular or Pure Gold  
Twelve 12 oz. bottles or cans

**\*Bud Light Beer**  
Next - Twelve 12 oz. cans,  
Lime or Platinum  
Twelve 12 oz. bottles or cans

**16<sup>99</sup>**

**\*Jack Daniel's Perfect Mix**  
Four 355 ml. cans, Selected Varieties

**\*Cutwater Spirits**  
Four 12 oz. cans, Selected Varieties

**\*Coors Beer**  
•Light - Nine 16 oz. aluminum bottles or  
Twelve 12 oz. bottles  
•Light or Banquet - Twelve 12 oz. cans

**\*Miller Lite Beer**  
Nine 16 oz. aluminum bottles or  
Twelve 12 oz. bottles or cans

**\*Budweiser Beer**  
Light or Regular  
•Twelve 12 oz. bottles or cans  
•Twelve 16 oz. aluminum bottles

**\*O'Doul's Non-Alcoholic Brew**  
Twelve 12 oz. cans

**\*Sapporo Beer**  
Twelve 12 oz. cans

**15<sup>99</sup>**

**\*Crown Royal**  
Four 355 ml. cans  
Selected Varieties

**\*Kirin Ichiban Beer**  
Twelve 12 oz. bottles or cans

**\*Natural Ice Beer**  
Fifteen 12 oz. cans

**13<sup>99</sup>**



**\*Funny Water**  
Classic or Sweet & Spicy  
Twelve 12 oz. cans

**\*Pabst**  
**Blue Ribbon Beer**  
Twelve 12 oz. cans

**\*Keystone Light Beer**  
Fifteen 12 oz. cans

**12<sup>99</sup>**

**\*High Noon**  
Four 355 ml. cans  
Selected Varieties

**\*Maui Brewing**  
Big Swell or Bikini Blonde

**\*Waikiki**  
**Brewing Company**  
Eee Pah IPA or  
Aloha Spirit Blonde Ale  
Six 12 oz. cans

**\*Bud Ice Beer**  
Twelve 12 oz. bottles

**\*Rolling Rock**  
**Extra Pale Beer**  
Twelve 12 oz. cans

**11<sup>99</sup>**

**\*Jack Daniel's**  
**Country Cocktails**  
Six 10 oz. bottles  
Selected Varieties

**\*Ola Hard Seltzer**  
Selected Varieties or  
**Kona Spiked**  
**Tropical Punch**  
**Island Seltzer**  
Six 12 oz. cans

**10<sup>99</sup>**

**\*Smirnoff Ice**  
**Premium Malt Beverage**  
Selected Varieties

**\*Mike's Hard Lemonade**  
Cranberry or Lemonade

**\*Stella Artois Lager**  
Six 11.2 oz. bottles

**\*Maui or White Claw**  
**Hard Seltzer**  
Selected Varieties

**\*Sierra Nevada IPA**  
**Hazy Little Thing**  
Six 12 oz. cans

**9<sup>99</sup>**

**\*Maui Brewing**  
Coconut Porter or IPA  
Four 12 oz. cans

**\*Michelob Ultra Pure Gold**  
Six 12 oz. bottles

**8<sup>99</sup>**

**Soonhari or Jinro Soju**  
375 ml., Selected Varieties

**4<sup>99</sup>**

