



"Make Longs a Part of Your Day"

Sale Sun., 7/13 - Sat., 7/19/25

at most OAHU LONGS DRUGS

Advertised items are available at participating locations

We accept all manufacturers' coupons, subject to manufacturer's restrictions.  
We reserve the right to limit sales to dealers, restaurants or institutions. General Excise Tax additional.  
Seasonal Merchandise is limited to stock on hand. Advertised items are available at participating locations.  
**LONGS 24-HOUR STORES:** Sale effective Sunday (7/13) 12:00 am thru Saturday (7/19) 12:00 midnight.  
Liquor items will be available for purchase from 6:00 am - 12 midnight.

Longs Drugs<sup>®</sup>  
is a proud sponsor **M** MARCH OF DIMES

Visit any of our Longs Drug Stores & help us support March of Dimes Hawaii by raising funds for healthier babies. Purchase select Aloha Gourmet Snacks, Old Trapper Beef Sticks & World's Finest Chocolates.

"Together We're Building Healthy Families"



Find more deals  
on [longs.com](https://www.longs.com)

Follow us on Social Media

[Instagram](#) [Facebook](#) [YouTube](#) [TikTok](#) @LongsDrugsHI



May's Hawaii  
Kalua Brand  
Pork  
12 oz.

**4<sup>99</sup>**

WITH CARD



Coral  
Chunk Light Tuna  
in Water or  
in Vegetable Oil

5 oz.

10 pack

**99¢** WITH CARD  
**9<sup>79</sup>** WITH CARD



Summer  
Savings  
Selected Varieties  
Sale items not included

**25% OFF**

WITH CARD



Hawaiian Isles  
Coffee Roaster's Co. Coffee

8 oz.  
Selected Varieties

Lion Coffee  
24 oz.  
Selected Varieties

Select items contain 90% foreign-grown coffee

**7<sup>99</sup>** WITH CARD  
**16<sup>99</sup>** WITH CARD



Tostitos Salsa

15.5 oz.  
Selected  
Varieties

**2/\$8**

WITH CARD

Ruffles Potato Chips  
5.5 - 8.5 oz., Selected Varieties or  
Tostitos Tortilla Chips  
9 - 13 oz., Selected Varieties

**2/\$9**

WITH CARD



Summer Toys,  
Swim & Dive  
Products &  
Summer Beach Toys  
Selected Varieties

**25% OFF**

WITH CARD



Palm  
Corned Beef  
11.5 oz.

**4<sup>99</sup>**

WITH CARD



Nature's Bounty &  
Osteo Bi-Flex  
Vitamins & Supplements  
Selected Varieties

Buy 1, Get 1

**FREE\*\***

WITH CARD



Bic & 3M  
Stationery  
Products  
Selected Varieties

Buy 1, Get 1

**50% OFF\*\***

WITH CARD



Aquafina  
Purified Water

Twenty-four 16.9 oz. bottles

**8<sup>99</sup>**

WITH CARD



Hawaiian Sun  
Drinks

Six 11.5 oz. cans  
Selected Varieties

**2/\$7**

WITH CARD



Charmin  
Mega Roll  
Bathroom Tissue  
Ultra Soft or  
Ultra Strong  
6 count

**10<sup>49</sup>**

WITH CARD



Coca-Cola Products  
Twenty-four 12 oz. cans  
Selected Varieties

**14<sup>49</sup>**

WITH CARD



Michelob Ultra

Twenty-four  
12 oz. cans

**27<sup>99</sup>**

WITH CARD

Corona Beer or  
Heineken Lager Beer

Twelve 12 oz.  
bottles or cans  
Selected Varieties

**16<sup>99</sup>**

WITH CARD



\*Budweiser Beer  
Light or Regular  
\*Coors Beer  
Light or Banquet  
\*Miller Beer  
Lite or 64  
Thirty 12 oz. cans

**28<sup>99</sup>**

WITH CARD



**10<sup>99</sup>**

WITH CARD

Buy 2 Get

**\$2**

ExtraBucks® Rewards

## L'Oreal Superior Preference Haircolor

Selected Varieties

ExtraBucks® Rewards

offer limit of 1 per household with card.



## L'Oreal Cosmetics

Selected Varieties

ExtraBucks® Rewards

offer limit of 1 per household with card.

Buy 1, Get 1

**50% OFF\*\***

WITH CARD

Spend \$25 Get

**\$7**

ExtraBucks® Rewards



## Aveeno Haircare, Skincare & Suncare

Selected Varieties

ExtraBucks® Rewards

offer limit of 1 per household with card.

Buy 1, Get 1

**50% OFF\*\***

WITH CARD

Spend \$15 Get

**\$3**

ExtraBucks® Rewards



## Neutrogena & Aveeno Suncare

Selected Varieties

ExtraBucks® Rewards

offer limit of 1 per household with card.

Buy 1, Get 1

**50% OFF\*\***

WITH CARD

Buy 2 Get

**\$2**

ExtraBucks® Rewards



## Clairol Nice 'N Easy Permanent Color

Selected Varieties

**7<sup>99</sup>**

WITH CARD



## Dove Haircare

Selected Varieties

Buy 1, Get 1

**50% OFF\*\***

WITH CARD



## Dove & Caress Body Washes

Selected Varieties

Buy 1, Get 1

**50% OFF\*\***

WITH CARD



## Nivea, Eucerin & Aquaphor Skincare

Selected Varieties

Buy 1, Get 1

**50% OFF\*\***

WITH CARD



## Clairol Root Touch-Up

Selected Varieties

**6<sup>99</sup>**

WITH CARD

Temporary & Color Blending Gel

**20% OFF**

WITH CARD



## Suave Haircare

Selected Varieties

Buy 1, Get 1

**50% OFF\*\***

WITH CARD



## Axe Deodorants, Shower Gels & Haircare

Selected Varieties

Buy 1, Get 1

**50% OFF\*\***

WITH CARD



## Dove & Degree Antiperspirants & Deodorants

Selected Varieties

Buy 1, Get 1

**50% OFF\*\***

WITH CARD



## Got2b Haircare

Selected Varieties

Trial sizes not included

**20% OFF**

WITH CARD



## Ardell Eyelashes, Eyebrows & Duo Products

Selected Varieties

Buy 1, Get 1

**50% OFF\*\***

WITH CARD



## Salux Striped Nylon Wash Cloth

Selected Varieties

**2/\$5**

WITH CARD



## Safeguard Bar Soap

Beige or Aloe

4 count

**2/\$8**

WITH CARD



## One+Other, Scunci & Conair Hair Accessories

Selected Varieties

One+Other is Sold Exclusively at Longs!

Buy 1, Get 1

**50% OFF\*\***

WITH CARD



## Kokie Cosmetics

Selected Varieties

**30% OFF**

WITH CARD



## OPI Nail Colors & Treatments

Selected Varieties

Buy 1, Get 1

**50% OFF\*\***

WITH CARD



## Sun Bum Suncare

Selected Varieties

**20% OFF**

WITH CARD





**CVS Health Sensitive Toothpaste**  
3.4 - 4 oz.  
Selected Varieties

Buy 1, Get 1

**50% OFF\*\***

WITH CARD



**CVS Health Nicotine Replacement Therapy**  
Selected Varieties

Buy 1, Get 1

**50% OFF\*\*** WITH CARD



**Nexium 24 Hr.**  
Capsules or Clear Minis  
42 count

**25<sup>99</sup>**

WITH CARD



**\*Allegra 24 Hr.**  
Allergy or Hives  
30 count

**\*Xyzal 24 Hr. Allergy**  
35 count

**\*Nasacort 24 Hr. Allergy**  
120 sprays

**19<sup>99</sup>**

WITH CARD



**CVS Health Antiseptic Mouthwash**  
Blue Mint or Green Mint  
1.5 liters

**4<sup>99</sup>**

WITH CARD



**CVS Health Foot Care**  
Selected Varieties

Buy 1, Get 1

**50% OFF\*\***

WITH CARD



**CVS Health Sleep Aids**  
Selected Varieties  
Melatonin not included

Buy 1, Get 1

**40% OFF\*\***

WITH CARD



**CVS Health Hydrogen Peroxide**  
16 oz.

**99¢** WITH CARD

**70% Rubbing Alcohol**  
16 oz., Selected Varieties

**1<sup>49</sup>** WITH CARD



**CVS Health Denture Cleansers**  
Selected Varieties

Buy 1, Get 1

**50% OFF\*\***

WITH CARD



**Atkins & Quest Nutrition**  
Selected Varieties

Buy 1, Get 1

**50% OFF\*\***

WITH CARD



**CVS Health Wound Care Covers & Tapes**  
Selected Varieties

Buy 1, Get 1

**50% OFF\*\***

WITH CARD



**LA Girl Cosmetics**  
Selected Varieties  
Available at select stores

Buy 1, Get 1

**50% OFF\*\***

WITH CARD



**The Creme Shop Cosmetics & Skincare**  
Selected Varieties  
Eyelashes not included

Buy 1, Get 1

**50% OFF\*\*** WITH CARD



**CVS Health Body Washes**  
16 - 34 oz.  
Selected Varieties

Buy 1, Get 1

**50% OFF\*\***

WITH CARD



**Softsoap Hand Soap**  
7.5 oz., Selected Varieties

**2/\$3** WITH CARD

**Refill**  
50 oz., Selected Varieties

**6<sup>49</sup>** WITH CARD



**Conair Hairstyling Appliances & Lighted Mirrors**  
Selected Varieties

**20% OFF**

WITH CARD



**Tweezerman Beauty Tools**  
Selected Varieties

Buy 1, Get 1

**50% OFF\*\***

WITH CARD



**One+Other Cotton**  
Trial & Travel sizes not included

**\*Nail Polish Removers**  
Selected Varieties

Buy 1, Get 1

**50% OFF\*\*** WITH CARD

Sold Exclusively at Longs!



**Purell Hand Sanitizer**  
8 oz. pump  
Selected Varieties

**2<sup>99</sup>** WITH CARD

Naturals or 2 in 1  
10 oz. foam

**3<sup>99</sup>** WITH CARD



**Jerome Russell Hair Bleach & Colors**  
Selected Varieties

**25% OFF**

WITH CARD



**Nizoral Haircare**  
Selected Varieties

**20% OFF**

WITH CARD



**Bic Razors**  
Selected Varieties

Buy 1, Get 1

**50% OFF\*\***

WITH CARD



**Colgate Toothpaste**  
2.5 oz.+60% more free  
Selected Varieties

**5/\$5** WITH CARD



**Nutrex  
\*BioAstin  
Hawaiian  
Astaxanthin**  
4 mg., 60 count

**\*Spirulina**  
500 mg.  
200 count

**11<sup>99</sup>** WITH CARD



**BioAstin  
Hawaiian  
Astaxanthin  
Gummies**

**23<sup>99</sup>** WITH CARD

60 count



**Huggies  
Snug & Dry**  
18 - 44 count  
Selected Varieties

**9<sup>99</sup>** WITH CARD



**Pull-Ups**  
17 - 23 count  
Selected Varieties

**12<sup>99</sup>** WITH CARD



**\*Carefree  
Pads** - 28 count  
Selected Varieties or  
**\*Stayfree  
Pads** - 93 count



**\*Stayfree  
Pads**  
48 count

**2/\$14** WITH CARD



**Carefree Pads**  
40 count

**9<sup>99</sup>** WITH CARD



**Colgate  
Extra Clean  
Toothbrush**  
Selected Varieties

**5/\$5**

WITH CARD



**Nature Made  
Vitamins &  
Supplements**  
Selected Varieties

Buy 1, Get 1

**50% OFF\*\***

WITH CARD



**Huggies  
Wipes**  
168 - 192 count  
Selected Varieties

**6<sup>99</sup>**

WITH CARD



**CVS Health  
Fitted Briefs,  
Underwear,  
Protective Pads,  
Guards & Shields**  
Selected Varieties

Buy 1, Get 1

**50% OFF\*\***

WITH CARD



**Crest & Oral-B  
Pro Health  
Oral Care**  
Selected Varieties

Buy 1, Get 1

**50% OFF\*\***

WITH CARD



**\*Flintstones &  
One A Day  
Vitamins  
\*Citracal**  
Selected Varieties

Buy 1, Get 1

**50% OFF\*\***

WITH CARD



**Alcon  
Naphcon A, Zaditor,  
Systane, Genteal,  
Opti-Free & Pataday  
Eye Drops**  
Selected Varieties

Buy 1, Get 1

**50% OFF\*\***

WITH CARD



**Benadryl  
Itch Stopping Cream**  
Extra Strength or Original Strength

One oz.

**5<sup>99</sup>** WITH CARD



**Neosporin  
Cream or Ointment**  
0.5 oz.

Selected  
Varieties

**6<sup>99</sup>** WITH CARD



**Crest & Oral-B  
Gum Care**  
Selected Varieties

Buy 1, Get 1

**50% OFF\*\***

WITH CARD



**Airborne**  
Selected Varieties

Buy 1, Get 1

**50% OFF\*\***

WITH CARD



**Alka-Seltzer  
Digestive &  
Phillips'**  
Selected Varieties

Buy 1, Get 1

**50% OFF\*\***

WITH CARD



**Pepcid,  
Imodium &  
Dulcolax**  
Selected Varieties

Buy 1, Get 1

**50% OFF\*\***

WITH CARD



**Ricola Drops**  
19 - 24 count  
Selected Varieties

**2/4<sup>50</sup>**

WITH CARD



**Iberogast  
Liquid Drops**  
0.67 oz.

**8<sup>99</sup>** WITH CARD

**Liquid Drops**  
1.69 oz. or  
Softgels - 30 count

**18<sup>99</sup>** WITH CARD



**Miralax**  
Selected Varieties

Buy 1, Get 1

**50% OFF\*\***

WITH CARD



**Gas-X &  
Benefiber**  
Selected Varieties

Buy 1, Get 1

**50% OFF\*\***

WITH CARD





**Aloha Gourmet  
Li Hing Prune Mui  
with Apricots**  
16 oz.  
**4<sup>99</sup>** WITH CARD

**Mango Slices**  
Sweet or  
Li Hing  
14 oz.  
**5<sup>99</sup>** WITH CARD



**Dole  
Pineapple  
in Heavy Syrup**  
8.25 oz.  
Selected Varieties  
**2/\$3**  
WITH CARD



**Hawaiian Sun  
Pancake Mix**  
6 oz.  
Selected Varieties  
**2/\$6**  
WITH CARD



**Peet's  
Coffee**  
K-Cups - 10 count or  
Ground or Whole Bean  
10.5 oz.  
Selected Varieties  
**8<sup>99</sup>**  
WITH CARD



**\*Nature Valley Bars**  
12 count  
Selected Varieties  
**\*Jamba Fruit Snack**  
Strawberry Surf Rider or  
Mango-A-Go-Go  
14 count  
**6<sup>49</sup>** WITH CARD



**Punalu'u  
Shortbread  
Cookies**  
6 oz.  
Selected Varieties  
**5<sup>49</sup>** WITH CARD



**Oui By Yoplait  
Yogurt**  
French Style or  
Dairy Free  
5 oz.  
Selected Varieties  
**2/\$3**  
WITH CARD



**Daiko  
Nori Arare**  
1.41 oz.  
Selected Varieties  
**2/\$5** WITH CARD

**Akagi  
Kari Kari Ume**  
Salty & Sour or  
Sweet & Sour  
**3<sup>99</sup>** WITH CARD  
4.23 oz.



**Lotte  
Pepero** - 1.13 - 1.66 oz.  
Selected Varieties  
**4/\$5** WITH CARD

**\*Custard Cake**  
4.87 oz.  
**2/\$5** WITH CARD

**\*Choco Pie** - 5.92 oz.



**Storck Werther's  
Caramel Popcorn**  
5.29 oz. or  
**Knoppers**  
Milk Hazelnut Wafer  
5.3 oz.  
**2<sup>99</sup>** WITH CARD



**P-Nuttles  
Butter Toffee**  
4 - 5.25 oz.  
Selected Varieties  
**2<sup>19</sup>**  
WITH CARD

## Asian Foods



**Gen-Ji-Mai  
Quick Cook  
Whole Grain  
Brown Rice**  
4.4 lb.  
**8<sup>99</sup>**  
WITH CARD



**Shimaya Dashino-Moto**  
1.75 oz.  
**4/\$5** WITH CARD

**Shirakiku  
Miso Soybean Paste**  
Shiro or Awase  
26.45 oz.  
**4<sup>79</sup>** WITH CARD



**Lee Kum Kee  
Oyster Flavored  
Sauce**  
17 oz.  
**1<sup>69</sup>**  
WITH CARD



**Family  
100% Pure  
Sesame Oil**  
6 oz.  
**2<sup>59</sup>**  
WITH CARD



**Acecook  
Oh! Ricey  
Pho Noodles**  
Chicken or Beef  
2.5 oz. bag  
**5/\$5** WITH CARD

Chicken or Beef  
2.5 oz. bowl  
**3/\$5** WITH CARD



**Daisho  
Nabe  
Soup Base**  
26.4 - 26.45 oz.  
Selected Varieties  
**3<sup>79</sup>** WITH CARD



**Lee Kum Kee  
Minced Garlic or  
Minced Ginger**  
7.5 oz.  
**3<sup>79</sup>** WITH CARD



**Shirakiku  
Pickled Ginger**  
Amasu or Kizami  
12 oz.  
**5<sup>79</sup>** WITH CARD



**Myojo  
Udon Noodles**  
7.22 - 7.23 oz.  
Selected Varieties  
**3/\$5**  
WITH CARD



**Underwood  
Ranches  
Premium  
Hot Sauce**  
17 - 18 oz.  
Selected Varieties  
**5<sup>99</sup>** WITH CARD



**Shirakiku  
Aka Umeboshi  
Pickled Plums**  
8 oz.  
**4<sup>99</sup>** WITH CARD



# Asian Foods

**HOT PRICE!**

While Supplies Last!  
Sorry, No Rainchecks.

**Myojo  
Chukazanmai  
Noodles**

3.52 - 4.9 oz.  
Selected Varieties

**4/\$5**

WITH CARD



**Shirakiku  
Korean Seasoned  
Seaweed**

3 count

**3/\$5**

WITH CARD

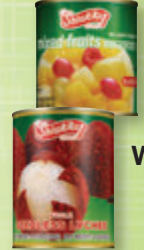


**House Foods  
Vermont Curry Mix**

4.05 oz.  
Selected Varieties

**2/\$6**

WITH CARD



**Shirakiku  
Mixed Fruits**

11 oz.

**1.59**

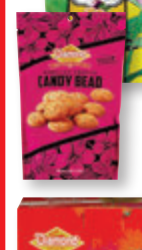
WITH CARD

**Whole Seedless Lychee**

1.25 lb.

**2.99**

WITH CARD



**Diamond Bakery  
Hawaiian Biscuits**

4 oz., Selected Varieties or  
**Cookies or  
Crackers**

4.5 oz., Selected Varieties

**2/\$5**

WITH CARD



**Crackers**

30 oz., Selected Varieties

**9.99**

WITH CARD



**Nabisco  
\*Chips Ahoy  
Wheat Thins**

7 - 13 oz. or  
8 - 8.5 oz.  
Selected Varieties

**\*Chicken  
in a Biscuit**

Original or Ranch  
7.5 oz.

**2/\$8**

WITH CARD



**Hawaiian Host  
Macadamias**

4 oz. stand-up bag  
Selected Varieties

**6.49**

WITH CARD



**Mauna Loa  
Macadamias**

4 oz. stand-up bag  
Selected Varieties

**6.99**

WITH CARD



**Hershey's  
Candy**

3.1 - 7 oz.  
peg bag  
Selected Varieties

**2.79**

WITH CARD



28.87 - 35.9 oz.  
party pack  
Selected Varieties

**15.99**

WITH CARD



**Kam Yen Jan  
Chinese Style  
Sausage**

12 oz.

**6.59**

WITH CARD



**Nice Brand  
Bean Thread**

7.75 oz.

**3.99**

WITH CARD



**Mori-Nu Silken Tofu**

10.8 - 10.9 oz.  
Selected Varieties

**2/\$4**

WITH CARD



**House Foods  
Chinese  
Mabo Tofu Sauce**

5.29 oz.  
Selected Varieties

**2/\$7**

WITH CARD



**Shirakiku  
Sweet Rice**

5 lb.

**7.99**

WITH CARD



**Shirakiku  
Coconut Milk**

13.5 oz.

**1.19**

WITH CARD



**Nescafe Taster's Choice  
Instant Coffee Packets**

18 count  
Selected Varieties

**2/\$8**

WITH CARD



**Nestle Coffeemate  
Flavored Creamer**

15 oz.

**4.99**

Selected Varieties



**Voortman  
Sugar Free Cookies - 8 oz. or  
Wafers - 9 - 10.6 oz.**

**2/\$9**

WITH CARD



**Hawaiian Sun  
Chocolate  
Macadamia Nuts**

2 count  
Selected Varieties

**4/\$5**

WITH CARD



**Macadamia Nuts**

2 oz., Selected Varieties

**2/\$5**

WITH CARD



**Hershey's Candy**

2.2 - 5 oz. king size  
Selected Varieties

**2/\$4**

WITH CARD



**Ice Breakers  
Ice Cubes Gum**

40 count  
Selected Varieties

**4.39**

WITH CARD



**Snow's Clams**

Mincd or  
Chopped  
6.5 oz.

**2.19**

WITH CARD



**Snow's New England  
Clam Chowder**

Condensed or Ready to Serve

**2/\$5**

WITH CARD



**Del Monte  
Pasta Sauce**

24 oz., Selected Varieties

**3/\$5**

WITH CARD



**Ketchup**

24 oz.

**2/\$4**

WITH CARD



**Golden Grain  
Pasta**

Tri-Color Rotini  
12 oz. or  
Linguine, Angel Hair,  
Rotelli or Rigatoni  
16 oz.

**3/\$5**

WITH CARD



**Del Monte  
Spinach**

13.5 oz. or  
Sliced Beets  
14.5 oz.

**3/\$5**

WITH CARD



**Wesson  
Oil**

Vegetable or Canola  
40 oz.

**2/\$10**

WITH CARD



**Lindsay Olives**

Sliced - Dr. wt. 2.25 oz. or  
Chopped - Dr. wt. 4.25 oz.

**3/\$5**

WITH CARD



**Garlic**

3 count

**2.49**

WITH CARD



**Ginger**

One lb.

**3.99**

WITH CARD



**Avocados**

4 count

**7.49**

WITH CARD



**Okinawan  
Sweet Potatoes**

3 lb.

**8.49**

WITH CARD



**Kellogg's  
Cereal  
Rice Krispies**

9 oz.,  
Crispix  
9.6 oz. or  
Cocoa Krispies  
12.6 oz.

**2/\$8**

WITH CARD



**Hearth &  
Harvest**

White or  
Wheat  
22 oz.

**4.99**

WITH CARD



**Fresh Gourmet  
Croutons**

5 oz.

**2/\$7**

Selected Varieties

**Fresh Catch  
Creamy Dressing**

12 oz.

**6.59**

WITH CARD



**SunHearth  
Milk**

One gallon  
Selected Varieties

**7.49**

WITH CARD



**Jif  
Peanut Butter**

15.5 - 16 oz.  
Selected Varieties

**2/\$6**

WITH CARD



**Samurai  
Hawaiian Frost**

4 oz. or  
Ju Mui  
Li Hing Pop  
4.5 - 4.6 oz.  
Selected Varieties

**2/\$4**

WITH CARD



**Kraft Deluxe Homestyle  
Mac & Cheese**

Original or Four Cheese

12 oz.

**2/\$6**

WITH CARD



**Lunchable  
Crispy Grilled Cheesies**

Original or  
Pepperoni  
2 count

**2/\$7**

WITH CARD



**Joongma-Go  
Korean  
Cracker Set**

19.4 oz.

**7.49**

WITH CARD



**Kraft Mac & Cheese**

Original or Thick 'N Creamy

7.25 oz.  
box

**5/\$5**

WITH CARD

Original

4 count cups

**4.99**

WITH CARD



**Jell-O  
Gelatin or  
Pudding**

4 count  
Selected Varieties

**2/\$5**

WITH CARD

Found in  
the Fridge





**Monster Energy Drink**  
16 oz.  
Selected Varieties

**3/6<sup>75</sup>** WITH CARD



**Reign Storm Energy Drink**  
12 oz.  
Selected Varieties

**2/4<sup>50</sup>** WITH CARD



**Pepsi Products**  
Twelve 12 oz. cans  
Selected Varieties

**7<sup>49</sup>** WITH CARD



**Pepsi Products**  
Ten 7.5 oz. cans

Selected Varieties **2/\$10** WITH CARD



**Coca-Cola Products**  
Ten 7.5 oz. cans

Selected Varieties **6<sup>49</sup>** WITH CARD



**Dasani Water**  
Twenty-four 16.9 oz. bottles

**8<sup>99</sup>** WITH CARD



**Glaceau Vitamin Water**  
20 oz. Selected Varieties

**2/\$4** WITH CARD



**Smart Water**  
One liter

Selected Varieties **2/\$5** WITH CARD



**Powerade Drink**  
28 oz. Selected Varieties

**3/\$5** WITH CARD



**Powerade Sports Drink**  
Eight 20 oz. bottles  
Selected Varieties

**6<sup>99</sup>** WITH CARD



**Gatorade Thirst Quencher**  
28 oz. Selected Varieties

**3/\$5** WITH CARD



**Lion Cold Brew Coffee**  
11 oz. Selected Varieties

**2/\$4** WITH CARD



**Brisk Beverage**  
One liter  
Selected Varieties

**2/\$3** WITH CARD



**Enjoy Arare**  
3.8 - 8 oz. Selected Varieties

**3/\$7** WITH CARD



**Lay's Stax**  
5.5 - 5.75 oz. Selected Varieties

**2/\$5** WITH CARD



**Simply Snacks**  
7.5 - 8.5 oz. Selected Varieties

**2/\$9** WITH CARD



**Doritos Tortilla Chips**  
6 - 10.75 oz. Selected Varieties

**4<sup>99</sup>** WITH CARD



**Bugles**  
7.5 oz. or



**Chex Mix**  
8 oz. Selected Varieties

**2/\$5** WITH CARD



**Epic Pork Rinds**  
2.5 oz. Selected Varieties

**2/\$6** WITH CARD



**Krack Corn**  
3.25 - 4 oz. Selected Varieties

**2/\$7** WITH CARD



**Planters Peanuts**  
2 lb. 2.5 oz. - 2 lb. 3 oz. Selected Varieties

**5<sup>99</sup>** WITH CARD



**Blue Diamond Almonds**  
6 oz. Selected Varieties

**2/\$7** WITH CARD



**Yick Lung Nibb-Its Twists**  
4 oz.

**5<sup>99</sup>** WITH CARD



**Gardetto's Snack Mix**  
8 - 8.6 oz. Selected Varieties

**2/\$6** WITH CARD



**Chacha Sunflower Seeds**  
8.82 oz. Selected Varieties

**2/\$6** WITH CARD

## Island Accents Wooden Chopsticks

30 count **2/\$1** WITH CARD

## Bamboo Chopsticks

30 count

**5/\$5** WITH CARD

## Forks or Spoons

24 count

**4/\$5** WITH CARD



## World Centric 6 in. Plates

20 count

**2/\$5** WITH CARD

## Bowls 11.5 oz. capacity or 9 in. Plates

20 count

**4<sup>29</sup>** WITH CARD



## Savory Prime Duck Jerky

16 oz.

**9<sup>99</sup>**

WITH CARD



## Duracell Specialty Batteries

Selected Varieties

Buy 1, Get 1

**50% OFF\*\***

WITH CARD



## Formula 409 Multi-Surface Cleaner

Original or Lemon  
32 oz.

**2/\$7**

WITH CARD



## World Centric Cups

Selected Varieties

**30% OFF**

WITH CARD



## Hartz Pet Products

Selected Varieties

**30% OFF**

WITH CARD



## CVS Alkaline Batteries

\*AA8, AAA8,  
C4, D4 or 9V2

\*Max - AA6 or AAA6

**6<sup>99</sup>**

WITH CARD



## Clorox Bathroom Bleach

Gel or Foamer  
30 oz.

**4<sup>29</sup>**

WITH CARD



## Combat Roach Killing Bait

Large - 8 count or  
Small - 12 count

**6<sup>99</sup>**

WITH CARD



## Inaba Pet Foods & Treats

Selected Varieties

**25% OFF**

WITH CARD



## Vornado Whole Room Circulator

#683

**79<sup>99</sup>**

WITH CARD



## Libman Freedom Spray Mop & Refill

**30% OFF**

WITH CARD



## Kila Kiawe Charcoal

10 lb. box

**13<sup>99</sup>**

WITH CARD



## Pet Central Training Pads

50 count

**8<sup>99</sup>** WITH CARD

100 count

**16<sup>99</sup>** WITH CARD



## 3M Duct Tape Multi Use

1.88 in. x 30 yds.

**3<sup>99</sup>** WITH CARD

Pro Strength  
1.88 in. x 60 yds.

**7<sup>99</sup>** WITH CARD



## Mothers Car Care

Selected Varieties

**25% OFF**

WITH CARD



## Kingsford Charcoal

Original or  
Match Light  
8 lb.

**8<sup>99</sup>** WITH CARD

Original - 16 lb.

**11<sup>99</sup>** WITH CARD



## Gaviota Fertilizer

20 lb., Selected Varieties

**27<sup>99</sup>** WITH CARD

Lawn & Garden  
Selected Varieties  
Sale items not included

**20% OFF** WITH CARD



## Gaviota Lawn Food

16-4-4 or  
Sulfate of  
Ammonia  
21-0-0  
20 lb.

**23<sup>99</sup>**

WITH CARD



# Learning Essentials



**Inkology Portfolio**  
Selected Varieties **1.49** WITH CARD

**Notebook**  
Selected Varieties **2.59** WITH CARD

**\*Pom Pen** - Single count  
**\*Gel Pens** 3 count  
Selected Varieties **2.99** WITH CARD



**Island Heritage Portfolio**  
Selected Varieties **2.49** WITH CARD

**Spiral Notebook**  
Selected Varieties **5.49** WITH CARD

**Composition Book**  
Selected Varieties **5.99** WITH CARD



**Pukka Planet**  
**Cork Notebook** **4.99** WITH CARD


**Cork Pencil Case** **5.99** WITH CARD

**Cork Project Book** **6.99** WITH CARD



**Votum Notebook**  
Selected Varieties **5.99** WITH CARD

**Axolotl Sketchbook** **9.99** WITH CARD



**Slice Ceramic Blade**  
**Safety Cutter** **3.99** WITH CARD

**Carton or Mini Cutter** **5.99** WITH CARD

**Box Cutter** **12.99** WITH CARD



**Pilot G2 Gel Pens**  
2 count  
Selected Varieties **2/\$5** WITH CARD

5 count  
Selected Varieties **6.99** WITH CARD



**Inkology 4 Tab Journal**  
Selected Varieties **5.99** WITH CARD

**Journal Silicone or Sparkle** **6.99** WITH CARD



**Hawaii Spirit Hawaiian Print Backpacks**  
Selected Varieties **30% OFF** WITH CARD



**Sharpie Permanent Marker**  
Single count  
Selected Varieties **99¢** WITH CARD

2 count  
Selected Varieties **1.89** WITH CARD



**Bazic Composition Book**  
100 sheets  
Selected Varieties **89¢** WITH CARD

**Glitter Gel Smens**  
Selected Varieties **1.79** WITH CARD



**Chillz Ice Wraps**  
2 count **3.99** WITH CARD

**Chillz Lunch Kit**  
Selected Varieties **13.99** WITH CARD



**Kitchen Helper Sink Strainer**  
Single count **1.99** WITH CARD

**Bathroom Helper Basin Strainer**  
2 count **2.69** WITH CARD




**Arm & Hammer Liquid Laundry Detergent**  
Fresh Burst - 138 oz. or  
Clean Burst - 140 oz.  
**15.99** WITH CARD



**Dawn Ultra Platinum Dishwashing Foam**  
10.1 oz. **2/\$6** WITH CARD

Refill 30.9 oz. **2/\$12** WITH CARD



**Aloha Fresh Slider Bags**  
15 - 25 count  
Selected Varieties **1.69** WITH CARD



**Kitchen Helper Stainless Steel Tong**  
Mini 7 in. **99¢** WITH CARD

9.5 in. **1.59** WITH CARD



**Woolite Detergent**  
Darks or Gentle Cycle  
50 oz. **9.99** WITH CARD



**Kleenex Facial Tissue**  
72 count **5/\$5** WITH CARD



**Duracell Coppertop Batteries**  
AA16 or AAA16 **14.99** WITH CARD

C8, D8 or 9V4 **16.99** WITH CARD




**Islander Group Black Pots**  
Selected Varieties **40% OFF** WITH CARD



**Downy In-Wash Scent Boosters**  
Selected Varieties **25% OFF** WITH CARD



**Bounty Select-A-Size Double Roll Paper Towels**  
Single count **3.19** WITH CARD



**Duracell Coppertop Batteries**  
AA16 or AAA16 **14.99** WITH CARD

C8, D8 or 9V4 **16.99** WITH CARD





**Patron Silver Tequila or Don Julio Blanco Tequila**  
750 ml. **39<sup>99</sup>**



**Hennessy VS Cognac**  
750 ml. **34<sup>99</sup>**



**Hess Collection Allomi Cabernet Sauvignon Wine**  
750 ml. **30<sup>99</sup>**



**Jameson Irish Whiskey**  
750 ml. Selected Varieties **23<sup>99</sup>**



**\*Jack Daniel's Whiskey, Crown Royal Blended Whisky or Ketel One Vodka**  
Selected Varieties



**\*Daou Paso Robles Cabernet Sauvignon**  
750 ml. **22<sup>99</sup>**

**Black Box or Bota Box Wine**  
3 liters, Selected Varieties **19<sup>99</sup>**



**\*Decoy Wine**  
750 ml., Selected Varieties



**\*Tito's Handmade Vodka**  
750 ml. **17<sup>99</sup>**



**La Marca Prosecco**  
Regular or Rose - 750 ml. **15<sup>99</sup>**

**Save 10%**

when you fill this bag with 4 or more 375 ml or larger, bottles of wine and/or spirits priced \$10 or greater. Excludes items priced ending in 97c.

**Mix & match!**

Selection, availability and pricing may vary by store and does not include applicable local, county, state or federal taxes. We reserve the right to limit quantities on all items. Regular retail prices quoted may vary in some stores. Clearance items not included. Beverage items are "CRV" where required by law. Alcoholic beverages available only in licensed stores. All beer & wine sold at minimums where state law regulates pricing.

**Glenlivet 12 Years Old Single Malt Scotch Whisky** - 750 ml. **43<sup>99</sup>**

**Elit Eighteen Vodka** 750 ml. **35<sup>99</sup>**

**Koloa Kauai Rum** 750 ml., Selected Varieties **30<sup>99</sup>**

**Johnnie Walker Black Label Blended Scotch Whisky** - 750 ml. **29<sup>99</sup>**

**1800 Tequila**  
Reposado - 750 ml. Silver - 750 ml. **29<sup>99</sup> 25<sup>99</sup>**

**Bulleit Whiskey** Bourbon or Rye - 750 ml. **26<sup>99</sup>**

**Teremana Blanco Tequila** - 750 ml. **25<sup>99</sup>**

**\*Grey Goose Vodka** 750 ml., Selected Varieties **24<sup>99</sup>**

**\*Tanqueray Gin** - 750 ml. **24<sup>99</sup>**

**Maker's Mark Bourbon Whiskey** 750 ml. **22<sup>99</sup>**

**Kahlua Liqueur** Original or Salted Caramel 750 ml. **19<sup>99</sup>**

**\*Cazadores Tequila** Blanco or Reposado - 750 ml.

**\*Skrewball Peanut Butter Whiskey** 750 ml. **23<sup>99</sup>**

**\*Ocean Vodka** 750 ml. **23<sup>99</sup>**

**La Crema Sonoma Wine**  
Pinot Noir - 750 ml. Chardonnay - 750 ml. **21<sup>99</sup> 15<sup>99</sup>**

**Meiomi Wine** 750 ml., Selected Varieties **18<sup>99</sup>**

**Stolichnaya Vodka** Original or Blueberry 750 ml. **17<sup>99</sup>**

**\*Captain Morgan or Malibu Rum** 750 ml., Selected Varieties

**\*Daou Chardonnay** - 750 ml.

**\*Jam Cellars Chardonnay** - 750 ml.

**\*Jose Cuervo Especial Tequila** Gold or Silver - 750 ml.

**\*Seagram's VO Canadian Whisky** 750 ml. **15<sup>99</sup>**

**Erath Pinot Noir** 750 ml. **14<sup>99</sup>**

**Kim Crawford Marlborough** 750 ml., Selected Varieties **13<sup>99</sup>**

**Hess Select Wine** - 750 ml.  
Cabernet Sauvignon Chardonnay **14<sup>99</sup> 10<sup>99</sup>**

**\*Korbel California Champagne, Bacardi Puerto Rican Rum or William Hill Estate Coastal Collection Wine** 750 ml., Selected Varieties

**\*Bread and Butter** Cabernet Sauvignon or Chardonnay - 750 ml.

**\*Korbel Prosecco or Southern Comfort** 750 ml. **12<sup>99</sup>**

**\*Wente Vineyards Estate Grown, Risata, Smirnoff Vodka, Francis Coppola Diamond Collection Wine or Captain Morgan's Parrot Bay Rum** 750 ml., Selected Varieties

**\*Evan Williams Kentucky Straight Bourbon Whiskey** Regular or Honey Reserve - 750 ml.

**\*Sauza Tequila** - Gold or Silver - 750 ml.

**\*Rodney Strong Wine** Chardonnay or Sauvignon Blanc - 750 ml.

**\*Gran Legacy Vodka** 1.75 liters **11<sup>99</sup>**  
*Sold Exclusively at Long's!*

**Mark West**  
Chardonnay - 750 ml. Pinot Noir - 750 ml. **10<sup>99</sup> 9<sup>99</sup>**

**\*14 Hands Vineyards, Sterling Vintner's Collection Wine, Matua or Murphy Goode Wine** 750 ml., Selected Varieties

**\*7 Deadly Zins Red Blend** - 750 ml. **10<sup>99</sup>**

**\*Bolla Wine or Columbia Crest Grand Estates** Selected Varieties

**\*Gabbiano** Chianti DOCG or Pinot Grigio

**\*Sunny with a Chance of Flowers Chardonnay Wine**

**\*Early Times Kentucky Whiskey** 750 ml. **9<sup>99</sup>**

**Folie a Deux Menage a Trois** 750 ml., Selected Varieties **8<sup>99</sup>**

**Smoking Loon California Wine or Dark Horse Wine** 750 ml., Selected Varieties **7<sup>99</sup>**

**Robert Mondavi Private Selection, Fetzer Wine or Cupcake Vineyards Wine** 750 ml., Selected Varieties **6<sup>99</sup>**

**Sutter Home California Wine** 750 ml., Selected Varieties **2/\$9**



**Josh Cellars** Cabernet Sauvignon or Merlot - 750 ml. **14<sup>99</sup>**



**Fleischmann's Regular Vodka** 1.75 liters **13<sup>99</sup>**

**Fireball Cinnamon Whisky** 750 ml. **12<sup>99</sup>**



**\*Kendall-Jackson Vintner's Reserve** Chardonnay or Rose - 750 ml.

**\*Grand Reserve** Low Calorie Chardonnay - 750 ml.

**\*Avant** - Chardonnay - 750 ml.



**\*Stella Rosa** 750 ml. Selected Varieties **11<sup>99</sup>**

**Imagery Wine or New Amsterdam Vodka** 750 ml. Selected Varieties **10<sup>99</sup>**



**Angeline Pinot Noir Wine** 750 ml. **9<sup>99</sup>**



**Apothic Wine** 750 ml. Selected Varieties **8<sup>99</sup>**

**Clos du Bois North Coast Wine** 750 ml. Selected Varieties **7<sup>99</sup>**



**CK Mondavi and Family Wine, Woodbridge by Robert Mondavi, Barefoot California Wine or Yellow Tail Australia Wine** 750 ml. Selected Varieties **5<sup>99</sup>**



- \*Stella Artois Lager  
Eighteen 11.2 oz. bottles
- \*Heineken Lager Beer  
Premium Light  
Eighteen 12 oz. bottles or  
Original  
Eighteen 12 oz. bottles or cans
- \*Corona Extra Beer  
Eighteen 12 oz. bottles or cans
- \*Kona Brewing  
Big Wave or Longboard or  
Modelo Especial Beer  
Eighteen 12 oz. cans
- \*Pabst Blue Ribbon Beer  
Thirty 12 oz. cans

**25<sup>99</sup>** WITH CARD

- \*Natural Beer  
Ice or Light
- \*Rolling Rock Beer  
Thirty 12 oz. cans

**24<sup>99</sup>** WITH CARD

**Keystone Light Beer**  
Thirty 12 oz. cans

**23<sup>99</sup>** WITH CARD

**Coors Light Beer or  
Miller Lite Beer**  
Fifteen 16 oz.  
aluminum bottles or  
Eighteen 12 oz. cans

**22<sup>99</sup>** WITH CARD

- \*High Noon  
Eight 355 ml. cans  
Selected Varieties
- \*Budweiser Beer  
Regular  
Eighteen 12 oz. cans or  
Light  
Eighteen  
12 oz. bottles or cans

**21<sup>99</sup>** WITH CARD

- \*White Claw Hard Seltzer  
Twelve 12 oz. cans  
Selected Varieties
- \*Truly Berry Mix or  
Maui Mix Pack  
Hard Seltzer  
Twelve 12 oz. cans
- \*Kona Brewing  
Selected Varieties or  
Twisted  
Original Hard Iced Tea  
Twelve 12 oz. bottles or cans

**19<sup>99</sup>** WITH CARD



- \*Truly Hard Seltzer  
Selected Varieties
- \*Michelob Ultra Seltzer  
Classic Collection or  
Signature Collection
- \*Arizona Hard Tea  
Green Tea or Variety
- \*Maui Brewing  
Seltzer  
Variety Pack or
- \*Topo Chico Hard Seltzer  
Twelve 12 oz. cans

**18<sup>99</sup>** WITH CARD

- \*Heritage Collection Beer  
Twelve 11.2 oz. bottles
- \*Stella Artois Lager  
Twelve 11.2 oz. bottles or cans
- \*Bud Light Seltzer  
Twelve 12 oz. cans  
Selected Varieties

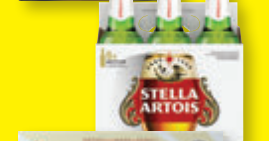
**17<sup>99</sup>** WITH CARD

- \*Steinlager Beer  
Pure or Regular  
Twelve 11.15 oz. bottles
- \*Beck's  
Regular German Beer  
Twelve 12 oz. bottles
- \*The Beast Unleashed  
Twelve 12 oz. cans
- \*Michelob  
Ultra or Ultra Pure Gold  
Twelve 12 oz. bottles or cans
- \*Modelo Especial Beer  
Twelve 12 oz. bottles or cans  
Selected Varieties
- \*Budweiser Beer  
Twelve 16 oz. aluminum bottles

**16<sup>99</sup>** WITH CARD

- \*Cutwater Spirits  
Four 12 oz. cans  
Selected Varieties
- \*Coors Beer  
•Light  
Nine 16 oz. aluminum bottles or  
Twelve 12 oz. bottles  
•Light or Banquet  
Twelve 12 oz. cans
- \*Miller Lite Beer  
Nine 16 oz. aluminum bottles or  
Twelve 12 oz. bottles or cans
- \*Sapporo Beer or  
O'Doul's  
Non-Alcoholic Brew  
Twelve 12 oz. cans
- \*Budweiser Beer  
Light or Regular  
Twelve 12 oz. bottles or cans
- \*Bud Light Beer  
Twelve 16 oz. aluminum bottles

**15<sup>99</sup>** WITH CARD



- \*J Pop Chuhi  
Six 12 oz. cans
- Selected Varieties
- \*Natural Ice Beer  
Fifteen 12 oz. cans

**13<sup>99</sup>** WITH CARD

- \*Rolling Rock  
Extra Pale Beer or  
Pabst Blue Ribbon Beer  
Twelve 12 oz. cans
- \*Bud Ice Beer  
Twelve 12 oz. bottles or cans
- \*Keystone Light Beer  
Fifteen 12 oz. cans

**12<sup>99</sup>** WITH CARD

- \*High Noon  
Four 355 ml. cans  
Selected Varieties
- \*Maui Brewing  
Big Swell or Bikini Blonde  
Six 12 oz. cans

**11<sup>99</sup>** WITH CARD

- \*Mike's Hard Lemonade  
Cranberry or Lemonade or  
Stella Artois Lager  
Six 11.2 oz. bottles
- \*Ola Hard Seltzer or  
White Claw Hard Seltzer  
Six 12 oz. cans  
Selected Varieties
- \*Golden Road Brewing  
Golden Road Mango  
Six 12 oz. cans

**10<sup>99</sup>** WITH CARD

- \*Smirnoff Ice  
Premium Malt Beverage  
Six 11.2 oz. bottles  
Selected Varieties
- \*Maui Hard Seltzer  
Six 12 oz. cans  
Selected Varieties
- \*Michelob Ultra Pure Gold  
Six 12 oz. bottles
- \*Sierra Nevada  
Hazy Little Thing IPA  
Six 12 oz. cans

**9<sup>99</sup>** WITH CARD

**Maui Brewing**  
IPA or Coconut Porter  
Four 12 oz. cans

**8<sup>99</sup>** WITH CARD

**Jinro or Soonhari Soju**  
375 ml.  
Selected Varieties

**4<sup>99</sup>** WITH CARD