



"Make Longs a Part of Your Day"

Sale Sun., 8/10 - Sat., 8/16/25

at most OAHU LONGS DRUGS

Advertised items are available at participating locations

We accept all manufacturers' coupons, subject to manufacturer's restrictions.  
We reserve the right to limit sales to dealers, restaurants or institutions. General Excise Tax additional.  
Seasonal Merchandise is limited to stock on hand. Advertised items are available at participating locations.  
**LONGS 24-HOUR STORES:** Sale effective Sunday (8/10) 12:00 am thru Saturday (8/16) 12:00 midnight.  
Liquor items will be available for purchase from 6:00 am - 12:00 midnight.

Longs Drugs®  
is a proud sponsor **MARCH OF DIMES**

Visit any of our Longs Drug Stores & help us support March of Dimes Hawaii by raising funds for healthier babies. Purchase select Aloha Gourmet Snacks, Old Trapper Beef Sticks & World's Finest Chocolates.

"Together We're Building Healthy Families"



Find more deals  
on **longs.com**

Follow us on Social Media

Instagram Facebook YouTube Twitter @LongsDrugsHI



**Campbell's Spaghetti**

15.6 - 15.8 oz., Selected Varieties

**3/\$5** WITH CARD

**Chunky Soup**  
18.6 - 18.8 oz.  
Selected Varieties

**2/\$6** WITH CARD



**Tyson Boneless Skinless Chicken Thighs**  
2.5 lb.

**7.99**

WITH CARD



**HOT PRICE!**

While Supplies Last!  
Sorry, No Rainchecks.

**Yuban Ground Coffee**  
Dark Roast - 25.3 oz. or  
Traditional Roast - 27.9 oz.

**8.99** WITH CARD



**Ruffles Potato Chips**

5.5 - 8.5 oz. or

**Tostitos Tortilla Chips**

9 - 13 oz.

Selected Varieties

**2/\$9** WITH CARD

**Lay's Dip**

15 oz.

Selected Varieties

**4.99** WITH CARD



**Palm Corned Beef**  
11.5 oz.

**4.99**

WITH CARD



**Summer Savings**

Selected Varieties  
Sale items not included

**25% OFF**

WITH CARD



**Crest & Oral-B Pro Health Oral Care**  
Selected Varieties

Buy 1,  
Get 1

**50% OFF\*\*** WITH CARD



**Nature's Bounty & Osteo Bi-Flex Vitamins & Supplements**  
Selected Varieties

Buy 1, Get 1

**FREE\*\***

WITH CARD



**Cottonelle Mega Roll Toilet Paper**  
Ultra Comfort or  
Ultra Clean  
6 count

**7.99** WITH CARD



**Hawaiian Sun Drinks**

Six 11.5 oz. cans  
Selected Varieties

**2/\$7**

WITH CARD



**Coca-Cola Products**  
Twenty-four  
12 oz. cans  
Selected Varieties

**14.49**

WITH CARD



**Longs 2026 Calendar with Envelope**  
Selected Varieties

**88¢**

WITH CARD



**Aquafina Purified Water**

Twenty-four 16.9 oz. bottles

**8.99** WITH CARD



**Michelob Ultra**

Twenty-four  
12 oz. cans

**27.99**

WITH CARD

**Corona Beer or Heineken Lager Beer**

Twelve 12 oz.  
bottles or cans  
Selected Varieties

**16.99**

WITH CARD



**\*Budweiser Beer**

Light or Regular

**\*Coors Beer**

Light or Banquet

**\*Miller Beer**

Lite or 64

Thirty 12 oz. cans

**28.99** WITH CARD



Colgate Toothpaste  
6 oz., Selected Varieties

**1<sup>99</sup>** WITH CARD



\*Allegra 24 Hr.  
Allergy or Hives  
30 count  
\*Xyzal  
Allergy 24 Hr.  
35 count  
\*Nasacort  
Allergy 24 Hr.  
120 sprays

**1<sup>99</sup>** WITH CARD



Benadryl  
Itch Stopping  
Cream  
Extra Strength or  
Original Strength

**5<sup>99</sup>** WITH CARD

One oz.

Neosporin  
Cream or  
Ointment

0.5 oz.  
Selected Varieties

**6<sup>99</sup>** WITH CARD



U by Kotex  
Clean & Secure  
Maxi Pads - 14 - 24 count or  
Ultra Thin Pads  
20 - 22 count

Selected  
Varieties

**2/\$7** WITH CARD



Colgate  
Extra Clean  
Toothbrush  
Selected Varieties

**5/\$5**

WITH CARD



Flonase &  
Flonase Sensimist  
Selected Varieties

**20% OFF**

WITH CARD



Nature's Truth  
Vitamins &  
Essential Oils  
Selected Varieties

Buy 1, Get 1

**FREE**

WITH CARD



U by Kotex  
Clean & Secure  
Liners  
80 - 96 count or  
129 count  
Selected Varieties

**6<sup>49</sup>**

WITH CARD



Act  
Oral Care  
Selected Varieties

Buy 1, Get 1

**50% OFF\*\***

WITH CARD



Afrin  
Cold & Allergy  
Remedy,  
Alka-Seltzer  
Plus Cold &  
Coricidin HBP  
Selected Varieties

Buy 1, Get 1

**50% OFF\*\*** WITH CARD



Vitafusion &  
L'il Critters  
Vitamins &  
Digestive  
Selected Varieties

Buy 1, Get 1

**50% OFF\*\***

WITH CARD



U by Kotex  
Ultra Thin Pads  
13 - 18 count or  
Liners  
40 - 50 count  
Selected Varieties

**2/\$9** WITH CARD



Thera Tears &  
Clear Eyes  
Eye Care  
Selected Varieties

Buy 1, Get 1

**50% OFF\*\***

WITH CARD

Tylenol  
Regular Strength  
100 count

**9<sup>99</sup>** WITH CARD



\*Tylenol  
Extra Strength  
Tablets or Caplets  
\*Motrin  
200 mg. Ibuprofen

100 count

**11<sup>99</sup>** WITH CARD



Tums  
Antacid  
Selected Varieties

Buy 1, Get 1

**40% OFF\*\***

WITH CARD



Huggies  
Snug & Dry  
18 - 44 count  
Selected Varieties

**9<sup>99</sup>** WITH CARD

Pull-Ups  
17 - 23 count

Selected  
Varieties

**12<sup>99</sup>** WITH CARD



US Jaclean  
Revita Patch  
8 count

**9<sup>99</sup>** WITH CARD

32 count

**24<sup>99</sup>** WITH CARD



Satohap  
External Pain Relief,  
Sato Collagen &  
Yunker Supplements  
Selected Varieties

Buy 1, Get 1

**50% OFF\*\***

WITH CARD



TENA  
Pads & Guards  
Selected Varieties

Buy 1, Get 1

**50% OFF\*\***

WITH CARD



Huggies  
Wipes  
168 - 192 count  
Selected Varieties

**7<sup>99</sup>**

WITH CARD





**CVS Health  
Cough Drops**  
140 - 160 count  
Selected Varieties

**5<sup>99</sup>**  
WITH CARD



**CVS Health  
Sensitive Toothpaste**  
3.4 - 4 oz., Selected Varieties

Buy 1, Get 1 **50% OFF\*\*** WITH CARD



**Glide  
Dental Floss**  
43.7 - 54.6 yd.  
Selected Varieties

**2/\$8** WITH CARD

**Threader  
Floss**  
30 count

**4<sup>99</sup>** WITH CARD



**CVS Health  
Floss, Picks &  
Gum Care**  
Selected Varieties

Buy 1, Get 1  
**50% OFF\*\***  
WITH CARD



**CVS Health  
Baby Toiletries**  
Selected Varieties

Buy 1, Get 1  
**50% OFF\*\***  
WITH CARD



**CVS Health  
Eye & Ear Care**  
Selected Varieties

Buy 1, Get 1  
**50% OFF\*\***  
WITH CARD



**CVS Health  
Foot Care**  
Selected Varieties

Buy 1, Get 1  
**50% OFF\*\***  
WITH CARD



**CVS Health  
Hydrogen  
Peroxide**

16 oz. **99¢** WITH CARD  
70%  
**Rubbing  
Alcohol**  
16 oz. Selected Varieties **1<sup>49</sup>** WITH CARD



**Preparation H**  
Selected Varieties

Buy 1, Get 1  
**50% OFF\*\***  
WITH CARD



**Voltaren Arthritis Pain**  
50 - 150 grams, Selected Varieties

**20% OFF** WITH CARD



**3M Nexcare**  
Selected Varieties

Buy 1, Get 1  
**40% OFF\*\***  
WITH CARD



**LA Girl  
Cosmetics**  
Selected Varieties  
*Available at select stores*

Buy 1, Get 1  
**50% OFF\*\***  
WITH CARD



**Tweezerman  
Beauty Tools**  
Selected Varieties

Buy 1, Get 1  
**50% OFF\*\***  
WITH CARD



**Biore  
Skincare**  
Selected Varieties

Buy 1, Get 1  
**50% OFF\*\***  
WITH CARD



**Gold Bond**  
Selected Varieties

Buy 1, Get 1  
**50% OFF\*\***  
WITH CARD



**Schick  
Razors &  
Refills**  
Selected Varieties

Buy 1, Get 1  
**50% OFF\*\***  
WITH CARD



**Suave  
Haircare**  
Selected Varieties

Buy 1, Get 1  
**50% OFF\*\***  
WITH CARD



**CVS Health  
Acne  
Cleansers &  
Treatments**  
Selected Varieties

Buy 1, Get 1  
**50% OFF\*\*** WITH CARD



**CVS Health  
Body Washes**  
16 - 34 oz.  
Selected Varieties

Buy 1, Get 1  
**50% OFF\*\***  
WITH CARD



**Braun  
Mobile Shave Blue**

#M-60b **15<sup>99</sup>** WITH CARD  
**Shavers & Trimmers**  
Selected Varieties

*Sale items  
not included* **20% OFF** WITH CARD



**Edge or  
Skintimate  
Shave Gel**  
7 oz.  
Selected Varieties

**2/\$8**  
WITH CARD



**Vanicream**  
Selected Varieties

**25% OFF**  
WITH CARD



**Clairol  
Root  
Touch-Up**  
Selected Varieties

**6<sup>99</sup>** WITH CARD

Temporary &  
Color Blending Gel  
Selected Varieties

**20% OFF** WITH CARD



**Clairol  
Nice 'N Easy  
Permanent Color**  
Selected Varieties

**7<sup>99</sup>**

WITH CARD



**L'Oreal  
Advanced Hairstyling,  
Elvive & Ever Haircare**  
Selected Varieties

**ExtraBucks® Rewards**  
offer limit of 1 per household with card.

Buy 1, Get 1  
**50% OFF\*\***  
WITH CARD  
Spend \$15 Get  
**\$3**  
ExtraBucks® Rewards



**Kokie  
Cosmetics**  
Selected Varieties

**30% OFF**

WITH CARD



**Neutrogena & Aveeno  
Suncare**  
Selected Varieties  
*Trial sizes not included*

**ExtraBucks® Rewards**  
offer limit of 1 per household with card.

Buy 1, Get 1  
**50% OFF\*\***  
WITH CARD  
Buy 2 Get  
**\$2**  
ExtraBucks® Rewards



**Mane 'N Tail  
Shampoo or  
Conditioner**  
32 oz.

**6<sup>49</sup>**

WITH CARD



**La Roche-Posay  
Skincare &  
Suncare**  
Selected Varieties

**20% OFF**

WITH CARD



**Dove & Degree  
Antiperspirants &  
Deodorants**  
Selected Varieties

Buy 1, Get 1  
**50% OFF\*\***

WITH CARD



**L'Oreal  
Magic Root  
Cover Up**  
Selected Varieties

**9<sup>99</sup>**

WITH CARD



**Sally Hansen  
Nail & Cosmetics**  
Selected Varieties

**ExtraBucks® Rewards**  
offer limit of 1 per  
household with card.

Buy 1, Get 1  
**50% OFF\*\***  
WITH CARD  
Spend \$10 Get  
**\$2**  
ExtraBucks® Rewards



**Dial Soap**  
8 count  
Selected Varieties

**6<sup>99</sup>**

WITH CARD



**Olay or  
Old Spice  
Body Wash**  
18 - 24 oz.  
Selected Varieties

**6<sup>99</sup>**

WITH CARD



**Hoyu Bigen  
Permanent Powder**  
0.21 oz.  
Selected Varieties

**5<sup>49</sup>** WITH CARD

**Speedy  
Conditioning  
Color Kit or  
Men's Speedy  
Permanent Color**  
2.82 oz.  
Selected Varieties

**8<sup>99</sup>** WITH CARD

**One Push  
Permanent  
Cream Color**  
Selected Varieties

**10<sup>99</sup>** WITH CARD



**Revlon  
Lip Color**  
Selected Varieties

**8<sup>99</sup>**

WITH CARD



**Ivory Soap**  
Original or Aloe  
3 count

**2/\$5**

WITH CARD



**Whip's  
Bubble Body Towel**  
Selected Varieties

**2/\$5** WITH CARD

**Rich  
Selected Varieties**

**2<sup>99</sup>** WITH CARD



**CS Being  
100% Cotton Puffs**

110 count

**2/\$4** WITH CARD



**Epielle  
Facial Skincare**  
Selected Varieties

**2/\$4**

WITH CARD



**Softsoap  
Hand Soap**  
7.5 oz., Selected Varieties

**2/\$3** WITH CARD

**Refill - 50 oz.  
Selected Varieties**

**6<sup>49</sup>** WITH CARD





**Betty Crocker Baking Mix**  
6.4 - 10.25 oz. pouch  
Selected Varieties **5/\$5** WITH CARD

**Bisquick**  
5.5 - 7.75 oz. pouch  
Selected Varieties **4/\$5** WITH CARD



**Fresh Catch Creamy Dressing**  
12 oz.  
**6<sup>59</sup>** WITH CARD



**Mama Instant Cup Noodles**  
2.47 oz. Selected Varieties **99¢** WITH CARD

**Nongshim Noodles**  
4 count Selected Varieties **5<sup>79</sup>** WITH CARD



**House Foods Vermont Curry Mix**  
4.05 oz. Selected Varieties **2/\$6** WITH CARD



**Sue Bee Pure Honey**  
3 lb.  
**18<sup>99</sup>** WITH CARD



**Fresh Gourmet Croutons**  
5 oz. Selected Varieties **2/\$7** WITH CARD



**Shirakiku Coconut Milk**  
13.5 oz.  
**1<sup>19</sup>** WITH CARD



**Mori-Nu Silken Tofu**  
10.8 - 10.9 oz. Selected Varieties **2/\$4** WITH CARD

**House Foods Chinese Mabo Tofu Sauce**  
5.29 oz. Selected Varieties **2/\$7** WITH CARD



**Morinaga Hi-Chew Chewy Candy**  
1.76 oz. Selected Varieties **4/\$5** WITH CARD

2.82 - 3.53 oz. Selected Varieties **2<sup>79</sup>** WITH CARD



**Snack Pack Pudding or Gel**  
4 count Selected Varieties **2/\$3** WITH CARD



**Heinz Tomato Ketchup**  
32 oz.  
**4<sup>29</sup>** WITH CARD



**HOT PRICE!**  
*While Supplies Last! Sorry, No Rainchecks.*

**Enjoy Chips or Sticks**  
3.53 oz. Selected Varieties **2/\$7** WITH CARD



**Orion Turtle Chips**  
Sweet Corn or Choco Churros 5.65 oz.  
**3<sup>99</sup>** WITH CARD



**Act II Microwave Popcorn**  
3 count Selected Varieties **2/\$4** WITH CARD



**Voortman Sugar Free Cookies - 8 oz. or Wafers - 9 - 10.6 oz.**  
Selected Varieties **2/\$9** WITH CARD



**David Sunflower Seeds**  
5.25 oz. Selected Varieties or **Pumpkin Seeds**  
2.25 oz. **1<sup>59</sup>** WITH CARD



**P-Nuttles**  
6 - 18 oz. big bag Selected Varieties **3<sup>99</sup>** WITH CARD



**Pop-Smile Popcorn**  
90 - 120 grams Selected Varieties **2/\$6** WITH CARD



**Just the Fun Part Bite-Sized Waffle Cones**  
4.23 oz. Selected Varieties **4<sup>99</sup>** WITH CARD



**Tao Kae Noi Hi Tempura**  
Original or Spicy 1.41 oz. **2/3<sup>50</sup>** WITH CARD



**Kasugai Snack Shrimp - 2.04 oz. or Squid - 2.18 oz.**  
**2/\$4** WITH CARD

**Daiko Nori Arare**  
10.5 oz., Selected Varieties **10<sup>99</sup>** WITH CARD



**Meiji Hello Panda**  
7 oz. stand-up pouch Selected Varieties **2/\$8** WITH CARD





**Mauna Loa or  
Hawaiian Host  
Macadamias**  
4 oz. stand-up bag  
Selected Varieties

**6<sup>99</sup>** WITH CARD



**Nabisco  
Oreo**  
10.68 - 18.71 oz.  
family size or

**Ritz  
Crackers**  
11.8 - 13.7 oz.  
Selected Varieties

**2/\$9** WITH CARD



**Diamond Bakery  
Hawaiian Shortbread  
Macadamia Nut Cookies**  
4 oz., Selected Varieties or

**Soda Crackers**  
13 oz., Selected Varieties

**2/8<sup>50</sup>** WITH CARD



**Royal Kona  
Coffee**  
8 oz. or 12 count  
Selected Varieties  
Select items contain  
90% foreign-grown coffee

**8<sup>99</sup>** WITH CARD

**100%  
Kona Coffee**  
Ground or Whole Bean  
7 oz.

**20<sup>99</sup>** WITH CARD



**Noh  
Mixes or  
Sauces**  
1 - 3 oz.  
Selected Varieties

**4/\$7** WITH CARD

**Poke Mix**  
0.4 oz.

**4<sup>59</sup>** WITH CARD



**Lawry's  
Chili Mix**  
1.48 oz. or

**Spaghetti  
Sauce Mix**  
1.5 oz.

**4/\$5** WITH CARD

**Garlic Salt**  
11 oz.

**4<sup>49</sup>** WITH CARD



**Garlic**  
3 count

**2<sup>49</sup>** WITH CARD

**Ginger**  
One lb.

**3<sup>99</sup>** WITH CARD

**Avocados**  
4 count

**6<sup>49</sup>** WITH CARD

**Okinawan  
Sweet  
Potatoes**  
3 lb.

**8<sup>49</sup>** WITH CARD



**Old El Paso  
Taco Seasoning Mix**  
One oz.  
Selected Varieties

**99¢** WITH CARD

**Old El Paso  
Enchilada Sauce**  
Red or Green Chile  
10 oz. or

**Refried Beans**  
16 oz.

**2/\$4** WITH CARD

**Old El Paso  
Taco Shells**  
12 count

**2/\$3** WITH CARD



**Hawaiian Host  
Choco Mango**  
2.8 oz.

**3<sup>29</sup>** WITH CARD



**Mars or Wrigley  
Candy**  
1.08 - 2.17 oz.  
Selected Varieties

**4/\$5** WITH CARD



**Hawaiian  
Tradition  
Arare  
Candy**  
2.3 - 3 oz. or  
2.5 oz.  
Selected Varieties

**2/\$4** WITH CARD



**Planters  
Peanuts**  
12 oz.  
Selected Varieties

**2/\$4** WITH CARD



**Nestle Coffeemate  
Flavored Creamer**  
15 oz.  
Selected Varieties

**4<sup>99</sup>** WITH CARD

**Nescafe  
Taster's Choice Coffee**  
7 oz.  
Selected Varieties

**9<sup>99</sup>** WITH CARD



**Golden Grain  
Pasta**  
\*Tri-Color Rotini  
12 oz.

**3/\$5** WITH CARD

**Ragu Pasta Sauce**  
Traditional or  
Mushroom - 24 oz.

**2<sup>99</sup>** WITH CARD



**Tulip  
Luncheon  
Meat**  
Classic or  
25% Less Sodium  
12 oz.

**2/\$4** WITH CARD



**Old El Paso  
Taco Sauce**  
9 oz.  
Selected Varieties or

**Cornbread Mix**  
Southwest Style or  
Cinnamon Churro  
13.5 oz.

**2/\$6** WITH CARD



**Hawaiian Sun  
Chocolate  
Covered  
Macadamia  
Nuts**  
5 oz.

**4<sup>39</sup>** WITH CARD

**25<sup>99</sup>** WITH CARD



**Hershey's Candy**  
3.1 - 7 oz. peg bag  
Selected Varieties

**2<sup>79</sup>** WITH CARD

**28.87 - 35.9 oz.  
party pack  
Selected Varieties**

**15<sup>99</sup>** WITH CARD



**Frito Lay  
Chips** - 1.75 - 4.125 oz.  
Selected Varieties

**2/\$5** WITH CARD

**Doritos  
Tortilla Chips**  
6 - 10.75 oz.  
Selected Varieties

**4<sup>99</sup>** WITH CARD



**Enjoy Cookies**  
5 - 5.3 oz.  
Selected Varieties

**2/\$7** WITH CARD



**General Mills  
Cereal**  
28 - 32 oz. bag  
Selected Varieties

**6<sup>49</sup>** WITH CARD



**Hunt's  
Tomato Sauce**  
8 oz., Selected Varieties

**5/\$5** WITH CARD

**Tomato Paste**  
6 oz.

**4/\$5** WITH CARD



**Beach Cliff  
Fish Steaks**  
3.75 oz.  
Selected Varieties

**4/\$5** WITH CARD

**Sea Alaska  
Pink Salmon**  
7.5 oz.

**2/\$5** WITH CARD



**Early California  
Olives**  
Sliced  
Dr. wt. 2.25 oz. or  
Chopped - Dr. wt. 4.25 oz.

**2/\$4** WITH CARD

**Large Pitted  
Dr. wt. 6 oz.**

**2/\$5** WITH CARD

**Sinaloa  
Flour Tortillas**  
10 count

**3<sup>99</sup>** WITH CARD

**10 for  
\$10** WITH CARD

good thru 8/30

- \*Jovy Fruit Roll  
0.75 oz., Selected Varieties
- \*Punaluu Cookie  
0.81 oz., Selected Varieties
- \*Blue Diamond Almonds  
1.5 oz., Selected Varieties
- \*Regent Snacks  
2.12 oz., Selected Varieties
- \*Philippine Brand Juice or Nectar  
8.4 oz., Selected Varieties



**Hershey's Candy**  
7.37 - 7.56 oz. giant bar  
Selected Varieties

**3<sup>69</sup>** WITH CARD

**Ice Breakers  
Ice Cubes Gum**  
40 count

**4<sup>39</sup>** WITH CARD

Selected Varieties



**Kettle Brand  
Potato Chips**  
6.5 - 7.5 oz.  
Selected Varieties

**5<sup>29</sup>** WITH CARD



**The Original  
Cookwee's  
Maui Cookies**  
6 oz.  
Selected Varieties

**2/7<sup>50</sup>** WITH CARD



**Pillsbury  
Crescents,  
Cinnamon Roll or Cornbread Swirl**  
8 - 12.4 oz.  
Selected Varieties

**2/\$5** WITH CARD



**Svenhard's  
Pastries**  
2 oz.  
Selected Varieties

**1<sup>69</sup>** WITH CARD

**Bimbo Bread**  
White or Wheat  
1 lb. 4 oz.  
family size

**5<sup>49</sup>** WITH CARD

**Knorr  
Bouillon Cubes**  
2.1 - 2.5 oz.

**99¢** WITH CARD



**Pasta Sides  
Alfredo**  
Selected Varieties

**Pasta or Rice Sides**  
4 - 5.6 oz.

**3/\$5** WITH CARD



**Kraft Cheese  
Shredded or Chunk**  
7 - 8 oz.  
Selected Varieties

**3<sup>29</sup>** WITH CARD

**Daisy  
Sour Cream or  
Cottage Cheese**  
16 oz.  
Selected Varieties

**3<sup>29</sup>** WITH CARD



**Albanese  
Gummies**  
7.75 - 9 oz.  
Selected Varieties

**3<sup>99</sup>** WITH CARD



**Chao Siam  
Fried Pork  
Skins or Snouts**  
2 - 3.17 oz.  
Selected Varieties

**6<sup>99</sup>** WITH CARD



**Aloha Gourmet  
Da Crack Seed Jar**  
2 - 10 oz.  
Selected Varieties

**4<sup>99</sup>** WITH CARD



**Loacker  
Thins - 5.29 oz. or  
Crispy Wafers - 5.29 - 6.17 oz.**  
Selected Varieties

**2/\$6** WITH CARD



**Shirakiku  
Dorayaki  
Red Bean Cake**  
Regular or with Chestnuts  
9.7 oz.

**4<sup>29</sup>** WITH CARD



**Ore-Ida Bagel Bites**  
Three Cheese or  
Cheese & Pepperoni  
7 oz.

**2/\$4** WITH CARD

**Delimex Quesadillas**  
Chipotle Chicken or  
Char-Grilled Chicken  
8 oz.

**5<sup>99</sup>** WITH CARD



**Hawaiian  
Eateries  
Kon Tiki Salsa**  
12 oz.  
Selected Varieties

**6<sup>99</sup>** WITH CARD





**Monster  
Energy Drink**  
16 oz.  
Selected Varieties

**3/6<sup>75</sup>**

WITH CARD



**Pepsi**  
Twenty-four  
12 oz. cans

**12<sup>99</sup>**

WITH CARD



**Dasani Water**  
Twenty-four  
16.9 oz. bottles

**8<sup>99</sup>** WITH CARD



**Lion  
Cold Brew  
Coffee**  
11 oz.  
Selected Varieties

**2/\$4**

WITH CARD



**Pepsi  
Products**  
Six 7.5 oz. cans  
Selected Varieties

**2/\$9**

WITH CARD



**Glaceau  
Vitamin Water**  
20 oz.  
Selected Varieties

**2/\$4**

WITH CARD



**Starbucks  
Frappuccino**  
13.7 oz.  
Selected Varieties

**2/\$6**

WITH CARD



**Powerade  
Drink**  
28 oz.  
Selected Varieties

**3/\$5**

WITH CARD



**Pepsi  
Products**  
Six 24 oz. bottles  
Selected Varieties

**2/\$8**

WITH CARD



**Coca-Cola  
Products**  
Ten 7.5 oz. cans  
Selected Varieties

**6<sup>49</sup>** WITH CARD



**Celsius  
Sparkling  
Drink**  
12 oz.  
Selected Varieties

**2/\$4**

WITH CARD

## Stay Cool for the Summer



**Sun & Sky  
Camp Chair**  
Kid's  
Hippo or Lady Bug

**13<sup>99</sup>** WITH CARD

Standard  
Selected  
Varieties

**14<sup>99</sup>** WITH CARD



**Honeywell  
Turboforce  
Power  
Air Circulator**

**17<sup>99</sup>**

WITH CARD



**House to Home**  
12 in.  
Oscillating  
Table Fan

**18<sup>99</sup>**

WITH CARD



**House  
to Home**  
16 in.  
Oscillating  
Pedestal  
Fan

Black or White

**19<sup>99</sup>**

WITH CARD



**Sun & Sky  
Deluxe  
Camp Chair**  
Selected Varieties

**16<sup>99</sup>**

WITH CARD



**Igloo  
Playmate  
Elite Cooler**  
16 qt. capacity

**22<sup>99</sup>**

WITH CARD



**Lasko**  
20 in. Box Fan

**25<sup>99</sup>**

WITH CARD



**Summer  
Footwear**  
Selected Varieties

**25% OFF**

WITH CARD



**Igloo Wheelie Cool Cooler**

38 qt. capacity

**38<sup>99</sup>**

WITH CARD



**Summer Toys**  
Selected Varieties

**25% OFF**

WITH CARD



**Swim &  
Dive  
Products &  
Summer  
Beach Toys**  
Selected Varieties

**25% OFF**

WITH CARD



Good Cook  
Containers  
Selected Varieties

**25% OFF** WITH CARD



WD-40  
Multi-Use  
Product  
8 oz.

**7<sup>29</sup>**

WITH CARD



Hefty Baggies  
Sandwich Bags

**1<sup>69</sup>** WITH CARD

80 count

Storage Gallon Bags

**3<sup>99</sup>** WITH CARD

75 count



Fantastik  
Cleaner  
32 oz.  
Selected Varieties

**2<sup>99</sup>**

WITH CARD



Kauhale Living  
Hawaiian  
Design Fabric  
Toaster Cover

**8<sup>99</sup>**

WITH CARD



Meguiar's  
Car Care  
Selected Varieties

**30% OFF**

WITH CARD



Ellemoi  
Facial Tissue  
5 pack

**8<sup>29</sup>**

WITH CARD



Simple Green  
All-Purpose  
Cleaner  
Regular or Lemon  
22 oz.

**4<sup>49</sup>**

WITH CARD



Kauhale Living  
Hawaiian Fabric  
Instant Pot Cover  
6 quart

**10<sup>99</sup>** WITH CARD

8 quart

**16<sup>99</sup>** WITH CARD



Armor All  
Wipes  
25 - 30 count  
Selected Varieties

**6<sup>99</sup>**

WITH CARD



Wet Ones  
Hand Wipes  
20 count  
Selected Varieties

**2/\$3**

WITH CARD



Clorox Handi Wipes  
Reusable Cloths  
Heavy Duty - 3 count or  
Multi-Use - 6 count

**2/\$4** WITH CARD

SOS  
Steel Wool Pads

Lemon or  
Regular  
10 count

**2/\$5** WITH CARD



Kauhale Living  
Hawaiian  
Design Fabric  
Handle &  
Strap Cover  
2 pieces

**4<sup>99</sup>**

WITH CARD



California  
Scents  
Car Scents  
Ice or  
Coronado Cherry  
1.5 oz.

**2/\$6** WITH CARD



Scent Bomb  
Concentration  
Air Freshener  
One oz.  
Selected Varieties

**2<sup>69</sup>**

WITH CARD



Kingsford  
Charcoal  
Original or  
Match Light  
8 lb.

**8<sup>99</sup>** WITH CARD

Original - 16 lb.

**11<sup>99</sup>** WITH CARD



CVS  
Alkaline  
Batteries  
\*AA8, AAA8,  
C4, D4 or 9V2  
\*Max - AA6 or AAA6

**6<sup>99</sup>**

WITH CARD



Febreze Car  
Air Freshener  
Vent Clips  
2 count  
Selected Varieties

**2/\$11**

WITH CARD



Treefrog  
Air Freshener  
Gel  
2.8 oz.  
Selected Varieties

**2/\$7**

WITH CARD



3M Duct Tape  
Multi Use  
1.88 in. x 30 yd.

**3<sup>99</sup>** WITH CARD

Pro Strength  
1.88 in. x 60 yd.

**7<sup>99</sup>** WITH CARD





**Duracell Batteries**

AA16 or AAA16 **14<sup>99</sup>** WITH CARD

C8, D8 or 9V4 **16<sup>99</sup>** WITH CARD



**Hefty Compostable Compartment Trays**

12 count or Paper Snack Plates 30 count

**3<sup>99</sup>** WITH CARD



**\*Gain Flings**  
14 - 16 count, Selected Varieties

**\*Tide Pods**  
Ultra Oxi - 12 count or Original - 16 count

**2/\$11** WITH CARD



**Islander Group Black Pots**  
Selected Varieties

**40% OFF** WITH CARD



**Sterilite Classic Red Spout Pail**  
10 quart capacity #1120

**2<sup>49</sup>** WITH CARD



**Ziploc 2 Gallon Bags**  
Freezer - 10 count or Storage - 12 count

**5<sup>99</sup>** WITH CARD



**Purex Liquid Detergent**  
43.5 - 50 oz. Selected Varieties

**2/\$8** WITH CARD



**Gaviota Fertilizer**  
20 lb., Selected Varieties

**27<sup>99</sup>** WITH CARD

**Gaviota Lawn & Garden**  
Selected Varieties

Sale items not included **20% OFF** WITH CARD



**Sterilite Dishpan**  
White or Red

12 quart capacity #0647 **2<sup>49</sup>** WITH CARD



**Ajax Dish Liquid**  
12.4 oz. Selected Varieties

**1<sup>29</sup>** WITH CARD



**Oxi Clean**  
Selected Varieties

**25% OFF** WITH CARD



**Gaviota Lawn Food**  
16-4-4 or Sulfate of Ammonia 21-0-0 20 lb.

**23<sup>99</sup>** WITH CARD



**Sterilite White Large Sink Set**

2 pieces #0627 **4<sup>99</sup>** WITH CARD



**Bug Bam Mosquito Band**  
2 count

**2/\$7** WITH CARD



**Lysol Air Sanitizer**  
10 oz. Selected Varieties

**7<sup>99</sup>** WITH CARD



**Clorox Toilet Wand**

Refills 10 count **5<sup>99</sup>** WITH CARD

**Cleaning Kit**  
**10<sup>99</sup>** WITH CARD



**Terro Ant Killer**  
One oz.

**2<sup>99</sup>** WITH CARD

**Outdoor Liquid Ant Baits**  
4 count **7<sup>29</sup>** WITH CARD



**Pic Mosquito Coils**  
Citronella - 10 count

**4/\$5** WITH CARD

Regular 10 count **2/\$4** WITH CARD



**Soft Scrub Cleaner**  
24 - 28.6 oz. Selected Varieties

**2/\$7** WITH CARD



**Tilex Daily Shower Cleaner**  
32 oz. spray **3<sup>19</sup>** WITH CARD

**Clorox Tilex Mold & Mildew Remover**  
32 oz. spray **4<sup>99</sup>** WITH CARD



**Patron Silver Tequila or Don Julio Blanco Tequila**  
750 ml. **39<sup>99</sup>**



**Hennessy VS Cognac**  
750 ml. **34<sup>99</sup>**



**Hess Collection Allomi Cabernet Sauvignon Wine**  
750 ml. **30<sup>99</sup>**



**Jameson Irish Whiskey**  
750 ml. Selected Varieties **23<sup>99</sup>**



**\*Jack Daniel's Whiskey, Crown Royal Blended Whisky or Ketel One Vodka**  
Selected Varieties



**\*Daou Paso Robles Cabernet Sauvignon**  
750 ml. **22<sup>99</sup>**

**Black Box or Bota Box Wine**  
3 liters, Selected Varieties **19<sup>99</sup>**



**\*Decoy Wine**  
750 ml., Selected Varieties



**\*Tito's Handmade Vodka**  
750 ml. **17<sup>99</sup>**



**La Marca Prosecco**  
Regular or Rose - 750 ml. **15<sup>99</sup>**

**Save 10%**

when you fill this bag with 4 or more 375 ml or larger, bottles of wine and/or spirits priced \$10 or greater. Excludes items priced ending in 97c.

**Mix & match!**

Selection, availability and pricing may vary by store and does not include applicable local, county, state or federal taxes. We reserve the right to limit quantities on all items. Regular retail prices quoted may vary in some stores. Clearance items not included. Beverage items are "CRV" where required by law. Alcoholic beverages available only in licensed stores. All beer & wine sold at minimums where state law regulates pricing.

**Glenlivet 12 Years Old Single Malt Scotch Whisky** - 750 ml. **43<sup>99</sup>**

**Elit Eighteen Vodka** 750 ml. **35<sup>99</sup>**

**Koloa Kauai Rum** 750 ml., Selected Varieties **30<sup>99</sup>**

**Johnnie Walker Black Label Blended Scotch Whisky** - 750 ml. **29<sup>99</sup>**

**1800 Tequila**  
Reposado - 750 ml. Silver - 750 ml. **29<sup>99</sup> 25<sup>99</sup>**

**Bulleit Whiskey** Bourbon or Rye - 750 ml. **26<sup>99</sup>**

**Teremana Blanco Tequila** - 750 ml. **25<sup>99</sup>**

**\*Grey Goose Vodka** 750 ml., Selected Varieties **24<sup>99</sup>**

**\*Tanqueray Gin** - 750 ml. **24<sup>99</sup>**

**Maker's Mark Bourbon Whiskey** 750 ml. **22<sup>99</sup>**

**Kahlua Liqueur** Original or Salted Caramel 750 ml. **19<sup>99</sup>**

**\*Cazadores Tequila** Blanco or Reposado - 750 ml.

**\*Skrewball Peanut Butter Whiskey** 750 ml. **23<sup>99</sup>**

**\*Ocean Vodka** 750 ml. **23<sup>99</sup>**

**La Crema Sonoma Wine**  
Pinot Noir - 750 ml. Chardonnay - 750 ml. **21<sup>99</sup> 15<sup>99</sup>**

**Meiomi Wine** 750 ml., Selected Varieties **18<sup>99</sup>**

**Stolichnaya Vodka** Original or Blueberry 750 ml. **17<sup>99</sup>**

**\*Captain Morgan or Malibu Rum** 750 ml., Selected Varieties

**\*Daou Chardonnay** - 750 ml.

**\*Jam Cellars Chardonnay** - 750 ml.

**\*Jose Cuervo Especial Tequila** Gold or Silver - 750 ml.

**\*Seagram's VO Canadian Whisky** 750 ml. **15<sup>99</sup>**

**Erath Pinot Noir** 750 ml. **14<sup>99</sup>**

**Kim Crawford Marlborough** 750 ml., Selected Varieties **13<sup>99</sup>**

**Hess Select Wine** - 750 ml.  
Cabernet Sauvignon Chardonnay **14<sup>99</sup> 10<sup>99</sup>**

**\*Korbel California Champagne, Bacardi Puerto Rican Rum or William Hill Estate Coastal Collection Wine** 750 ml., Selected Varieties

**\*Bread and Butter** Cabernet Sauvignon or Chardonnay - 750 ml.

**\*Korbel Prosecco or Southern Comfort** 750 ml. **12<sup>99</sup>**

**\*Wente Vineyards Estate Grown, Risata, Smirnoff Vodka, Francis Coppola Diamond Collection Wine or Captain Morgan's Parrot Bay Rum** 750 ml., Selected Varieties

**\*Evan Williams Kentucky Straight Bourbon Whiskey** Regular or Honey Reserve - 750 ml.

**\*Sauza Tequila** - Gold or Silver - 750 ml.

**\*Rodney Strong Wine** Chardonnay or Sauvignon Blanc - 750 ml.

**\*Gran Legacy Vodka** 1.75 liters **11<sup>99</sup>**  
*Sold Exclusively at Long's!*

**Mark West**  
Chardonnay - 750 ml. Pinot Noir - 750 ml. **10<sup>99</sup> 9<sup>99</sup>**

**\*14 Hands Vineyards, Sterling Vintner's Collection Wine, Matua or Murphy Goode Wine** 750 ml., Selected Varieties

**\*7 Deadly Zins Red Blend** - 750 ml. **10<sup>99</sup>**

**\*Bolla Wine or Columbia Crest Grand Estates** Selected Varieties

**\*Gabbiano** Chianti DOCG or Pinot Grigio

**\*Sunny with a Chance of Flowers Chardonnay Wine**

**\*Early Times Kentucky Whiskey** 750 ml. **9<sup>99</sup>**

**Folie a Deux Menage a Trois** 750 ml., Selected Varieties **8<sup>99</sup>**

**Smoking Loon California Wine or Dark Horse Wine** 750 ml., Selected Varieties **7<sup>99</sup>**

**Robert Mondavi Private Selection, Fetzter Wine or Cupcake Vineyards Wine** 750 ml., Selected Varieties **6<sup>99</sup>**

**Sutter Home California Wine** 750 ml., Selected Varieties **2/\$9**



**Josh Cellars** Cabernet Sauvignon or Merlot - 750 ml. **14<sup>99</sup>**



**Fleischmann's Regular Vodka** 1.75 liters **13<sup>99</sup>**

**Fireball Cinnamon Whisky** 750 ml. **12<sup>99</sup>**



**\*Kendall-Jackson Vintner's Reserve** Chardonnay or Rose - 750 ml.

**\*Grand Reserve** Low Calorie Chardonnay - 750 ml.

**\*Avant** - Chardonnay - 750 ml.



**\*Stella Rosa** 750 ml. Selected Varieties **11<sup>99</sup>**

**Imagery Wine or New Amsterdam Vodka** 750 ml. Selected Varieties **10<sup>99</sup>**



**Angeline Pinot Noir Wine** 750 ml. **9<sup>99</sup>**



**Apothic Wine** 750 ml. Selected Varieties **8<sup>99</sup>**

**Clos du Bois North Coast Wine** 750 ml. Selected Varieties **7<sup>99</sup>**



**CK Mondavi and Family Wine, Woodbridge by Robert Mondavi, Barefoot California Wine or Yellow Tail Australia Wine** 750 ml. Selected Varieties **5<sup>99</sup>**



- \***Stella Artois Lager**  
Eighteen 11.2 oz. bottles
- \***Heineken Lager Beer**  
Premium Light  
Eighteen 12 oz. bottles or Original
- \***Corona Extra Beer**  
Eighteen 12 oz. bottles or cans
- \***Kona Brewing**  
Big Wave or Longboard or
- \***Modelo Especial Beer**  
Eighteen 12 oz. cans
- \***Pabst Blue Ribbon Beer**  
Thirty 12 oz. cans

**25<sup>99</sup>** WITH CARD

- \***Natural Beer**  
Ice or Light
- \***Rolling Rock Beer**  
Thirty 12 oz. cans

**24<sup>99</sup>** WITH CARD

- Keystone Light Beer**  
Thirty 12 oz. cans

**23<sup>99</sup>** WITH CARD

- Coors Light Beer or Miller Lite Beer**  
Fifteen 16 oz. aluminum bottles or Eighteen 12 oz. cans

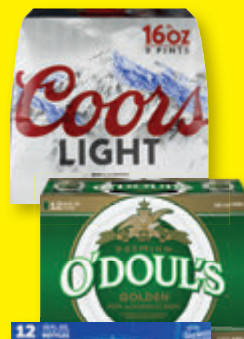
**22<sup>99</sup>** WITH CARD

- \***High Noon**  
Eight 355 ml. cans  
Selected Varieties
- \***Budweiser Beer**  
Regular  
Eighteen 12 oz. cans or Light  
Eighteen 12 oz. bottles or cans

**21<sup>99</sup>** WITH CARD

- \***White Claw Hard Seltzer**  
Twelve 12 oz. cans  
Selected Varieties
- \***Truly Berry Mix or Maui Mix Pack Hard Seltzer**  
Twelve 12 oz. cans
- \***Kona Brewing**  
Selected Varieties or Twisted  
Original Hard Iced Tea  
Twelve 12 oz. bottles or cans

**19<sup>99</sup>** WITH CARD



- \***Truly Hard Seltzer**  
Selected Varieties
- \***Michelob Ultra Seltzer**  
Classic Collection or Signature Collection
- \***Arizona Hard Tea**  
Green Tea or Variety
- \***Maui Brewing Variety Pack**
- \***Topo Chico Hard Seltzer**  
Twelve 12 oz. cans

**18<sup>99</sup>** WITH CARD

- \***Heritage Collection Beer**  
Twelve 11.2 oz. bottles
- \***Stella Artois Lager**  
Twelve 11.2 oz. bottles or cans
- \***Bud Light Seltzer**  
Twelve 12 oz. cans  
Selected Varieties

**17<sup>99</sup>** WITH CARD

- \***Steinlager Beer**  
Pure or Regular  
Twelve 11.15 oz. bottles
- \***Beck's Regular German Beer**  
Twelve 12 oz. bottles
- \***The Beast Unleashed**  
Twelve 12 oz. cans
- \***Michelob Ultra or Ultra Pure Gold**  
Twelve 12 oz. bottles or cans
- \***Modelo Especial Beer**  
Twelve 12 oz. bottles or cans  
Selected Varieties
- \***Budweiser Beer**  
Twelve 16 oz. aluminum bottles

**16<sup>99</sup>** WITH CARD

- \***Cutwater Spirits**  
Four 12 oz. cans  
Selected Varieties
- \***Coors Beer**  
•Light  
Nine 16 oz. aluminum bottles or Twelve 12 oz. bottles
- \*Light or Banquet  
Twelve 12 oz. cans
- \***Miller Lite Beer**  
Nine 16 oz. aluminum bottles or Twelve 12 oz. bottles or cans
- \***Sapporo Beer or O'Doul's Non-Alcoholic Brew**  
Twelve 12 oz. cans
- \***Budweiser Beer**  
Light or Regular  
Twelve 12 oz. bottles or cans
- \***Bud Light Beer**  
Twelve 16 oz. aluminum bottles

**15<sup>99</sup>** WITH CARD



- \***J Pop Chuhi**  
Six 12 oz. cans  
Selected Varieties
- \***Natural Ice Beer**  
Fifteen 12 oz. cans

**13<sup>99</sup>** WITH CARD

- \***Rolling Rock Extra Pale Beer or Pabst Blue Ribbon Beer**  
Twelve 12 oz. cans
- \***Bud Ice Beer**  
Twelve 12 oz. bottles or cans
- \***Keystone Light Beer**  
Fifteen 12 oz. cans

**12<sup>99</sup>** WITH CARD

- \***High Noon**  
Four 355 ml. cans  
Selected Varieties
- \***Maui Brewing**  
Big Swell or Bikini Blonde  
Six 12 oz. cans

**11<sup>99</sup>** WITH CARD

- \***Mike's Hard Lemonade**  
Cranberry or Lemonade or Stella Artois Lager  
Six 11.2 oz. bottles
- \***Ola Hard Seltzer or White Claw Hard Seltzer**  
Six 12 oz. cans  
Selected Varieties
- \***Golden Road Brewing Golden Road Mango**  
Six 12 oz. cans

**10<sup>99</sup>** WITH CARD

- \***Smirnoff Ice Premium Malt Beverage**  
Six 11.2 oz. bottles  
Selected Varieties
- \***Maui Hard Seltzer**  
Six 12 oz. cans  
Selected Varieties
- \***Michelob Ultra Pure Gold**  
Six 12 oz. bottles
- \***Sierra Nevada Hazy Little Thing IPA**  
Six 12 oz. cans

**9<sup>99</sup>** WITH CARD

- Maui Brewing**  
IPA or Coconut Porter  
Four 12 oz. cans

**8<sup>99</sup>** WITH CARD

- Jinro or Soonhari Soju**  
375 ml.  
Selected Varieties

**4<sup>99</sup>** WITH CARD

